



Dual Enrollment Program Overview For Parents and Families

Division on Instruction, School Counseling Services
Wednesday, April 9, 2025



Dual Enrollment | Outcomes



Gain a clear understanding of the LAUSD Dual Enrollment Program



Learn about the dual enrollment pathways available to students

Dual Enrollment | Who is the room?

Share the grade your student is in and one thing you know/wonder about dual enrollment.



Dual Enrollment | Our Goal



Pillar 1: Academic Excellence

High-Quality
Instruction

Enriching
Experiences

Eliminating
Opportunity
Gaps

College and
Career
Readiness

1B: Enriching Experiences: Deliver well-rounded, inspiring educational and enrichment experiences to instill and maintain a love of learning.

1C: Eliminating Opportunity Gaps: Advance programs and initiatives that support success for underrepresented student groups

1D: College and Career Readiness: Expand access to advanced learning options, such as advanced placement and college courses

Dual Enrollment | Our Goal

By 2026, 100 percent of schools serving students in grades 9 through 12+ offer access to one or more of the following college and career opportunities:

- College Courses and AA Degrees
- CTE Pathways
- Industry Certifications
- Internship and Apprenticeships



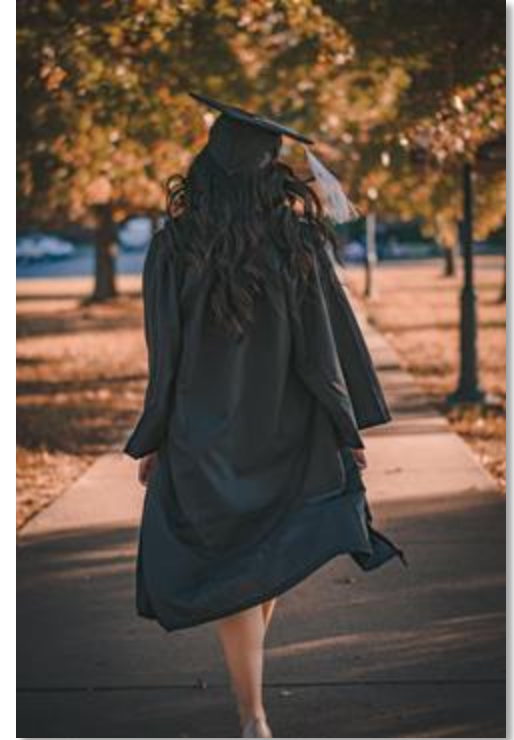
Dual Enrollment |



Dual Enrollment | Background

Assembly Bill 288 (2015) authorized community college and school districts to offer and expand opportunities for students to develop pathways from high school to community college in an effort to:

- Improve high school graduation rates
- Help students achieve college and career readiness
- Offer preparation for Career-Technical Education

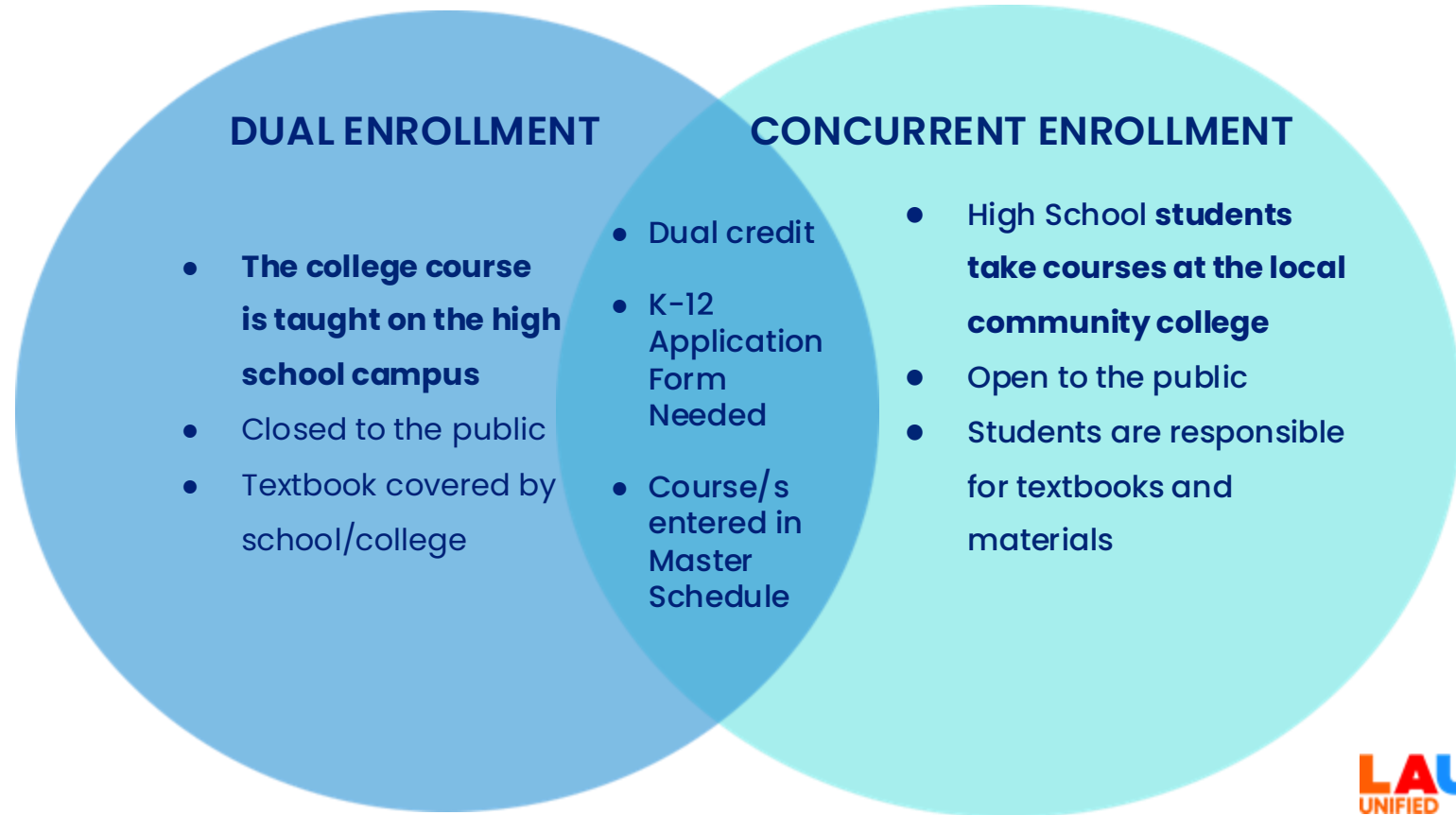


Dual Enrollment | Within LAUSD

Dual Enrollment enables high school students to take college courses from one of 9 LACCD community colleges, taught by college professors, at their high school campus during the school day.

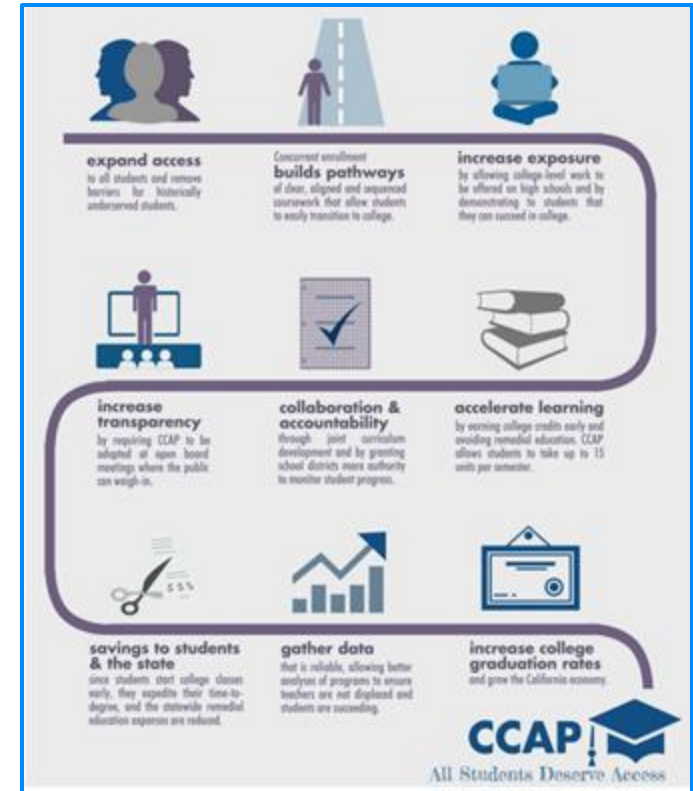


Dual Enrollment | Overview



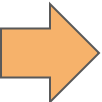
Dual Enrollment | Benefits

- **College Credit Opportunities**
Courses earn high school and college credit
- **Financial Benefits**
Courses are free for high school students
- **Credit Transferability**
Credits from dual enrollment are typically transferable to other colleges
- **Confidence Building**
Dual enrollment prepares students for success in college
- **Explore interests and careers**



Dual Enrollment | Benefits

College courses provide opportunities to earn AA degrees and certificates.

Pathway		Certification or Degree
CTE Dual Credit Pathway		Certificate of Completion/ Achievement
Intersegmental General Education Transfer Curriculum (Cal-GETC) Pathway		Certificate of Achievement (Fulfill lower-division gen. ed. requirements for transfer/admission to CSU/UC)
Associate in Arts (AA) or Associate in Science (AS) Pathway		Associate in Arts/Science Degree

Dual Enrollment | Pathways

- **California General Education Transfer Curriculum (Cal-GETC):**
Facilitating a seamless transfer to CSU or UC universities
- **Career Technical Education (CTE):**
Developing job-specific skills aligned with industry needs
- **Associate's Degree Programs:**
Providing a clear path towards completion of a two-year degree



Dual Enrollment | Course Types



Equivalent Courses

College courses that are approved by LAUSD and equivalent to an LAUSD High School course.



Non-Equivalent Courses

College course does not have an approved LAUSD equivalent course.

- Can not be applied towards a course graduation requirement



Select courses will be calculated in the LAUSD GPA with an augmentation For Class of 2026 and beyond.



LAUSD-LACCD Dual and Concurrent Course Guide for Class of 2026 and Beyond

Dual Enrollment | Registration Process

Before getting started: Must obtain approval from the school counselor/administrator

Students must:

STEP 1: COMPLETE THE COLLEGE APPLICATION

- **Create a CCCApply Account**

STEP 2: COMPLETE A K-12 DYNAMIC FORM

- **To be signed by parent/guardian/educational rights holder, student, and counselor**

STEP 3: LOGIN TO YOUR LACCD PORTAL

- **Access your curriculum, grades, classes, etc.**



Dual Enrollment | Impact of Grades

Receiving a D or F in a college class may result in...

- Negative Impact on College GPA
- Academic Probation
- Loss of Financial Aid



Dual Enrollment | Student Responsibilities

- **Maintain Academic Performance**
 - Completes coursework and assignments
 - Maintains good grades
 - Attends & Participates in all class sessions
- **Time Management**
 - Balances high school and college commitments
 - Plan to meet deadlines
- **Advocacy**
 - Reaches out to counselor, dual enrollment liaison, teacher, and professor for support.



Dual Enrollment | Parent/Family Role

Supporting Academic Success:

- Encourage and monitor your child's academic performance and progress in both high school and college courses. Help them manage their time effectively to balance both sets of coursework.
- Be aware that students are expected to follow the same academic standards as college students, and parental involvement is limited due to FERPA (Family Educational Rights and Privacy Act).
- Ensure your child is aware of and meets deadlines, such as assignment submissions and course registration.

Maintaining Open Communication:

- Stay in regular communication with your child's high school counselor to stay informed about their progress and any potential challenges.
- Address any concerns or issues your child may have regarding coursework, grades, or deadlines with the school counselor.

Dual Enrollment | Parent/Family Role

Understanding Program Requirements:

- Familiarize yourself with the dual enrollment program's policies, grading implications, and credit transfer processes.
- Be aware of the academic and behavioral expectations for students participating in dual enrollment.

Providing Emotional Support:

- Offer emotional and motivational support as your child navigates the challenges of balancing high school and college coursework.
- Encourage a healthy balance between academic commitments, extracurricular activities, and personal well-being.

Dual Enrollment | Questions?



Dual Enrollment | Region Contacts

REGION EAST



Alex Hernandez

Email:
julio.hernandez@lausd.net



Eiman Hernandez

Email:
exh6016@lausd.net



Gardenia Gonzalez

Email:
gxg0944@lausd.net

REGION SOUTH



Samuel Diaz

Email:
sed03621@lausd.net



Gina Kim

Email:
gxi1383@lausd.net



Barbara Politz

Email:
bip2505@lausd.net

REGION NORTH



Stephanie Lartelier

Email:
stephanie.lartelier@lausd.net



Angelica Streif

Email:
axs03761@lausd.net



Yolanda Jimenez

Email:
yolanda.jimenez@lausd.net

REGION WEST



Earlondra Jackson

Email:
emj96141@lausd.net



Maria Whittington

Email:
maa8635@lausd.net

Dual Enrollment | DOI Contacts



Brenda Pensamiento
LAUSD School Counseling Services
Administrator
Email: bpensami@lausd.net



Shelly Alavez
LAUSD School Counseling Services
Coordinator
Email: sxa3900@lausd.net



Esther Dabagyan
LAUSD CTE-Linked Learning
Administrator
Email: esther.dabagyan@lausd.net

A large group of graduates in red gowns and caps are seen from behind, standing in rows and throwing their caps into the air. The caps are flying high against a clear blue sky. In the foreground, several rows of empty white folding chairs are visible. The scene is outdoors, likely at a graduation ceremony.

Thank You