

# **GIFTED/TALENTED PROGRAMS**

## **Parent's Guide to the Otis-Lennon School Ability Test, Eighth Edition (OLSAT-8)**



**SPRING 2025  
SECOND-GRADE ADMINISTRATION**

# CLICK ON INTERPRETATION

## HAGA CLIC EN INTERPRETACIÓN

Please select your language for the meeting.

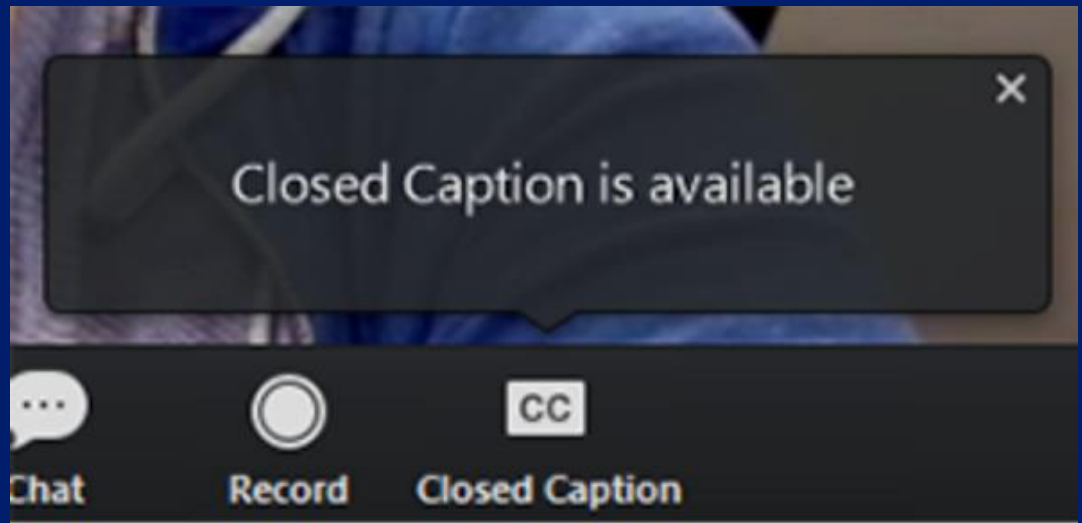
If you are using a cell phone, select “More” to select your language.



Por favor seleccione su idioma para la reunión.

Si usted está usando un teléfono celular, por favor seleccione “MORE” o “MÁS” para escoger su idioma.

# CLOSED CAPTIONING AVAILABLE



# STAFF & CONTACT INFORMATION

## Gifted/Talented Programs Staff

Wynne Wong-Cheng, District Coordinator

[wynne.wong@lausd.net](mailto:wynne.wong@lausd.net)

Michelle Papazyan, District Coordinator

[mpapazya@lausd.net](mailto:mpapazya@lausd.net)

Kevin Kilpatrick, District Coordinator

[kevin.kilpatrick@lausd.net](mailto:kevin.kilpatrick@lausd.net)

Phone: (213) 241-6500

Fax: (213) 241-8975

333 S. Beaudry Avenue, 25<sup>th</sup> Floor

Los Angeles, CA 90017

<https://www.lausd.org/gate>

Email: [GATE@lausd.net](mailto:GATE@lausd.net)

# AGENDA

Schedule: 6:00 – 7:00 PM

- ✓ Present an overview of the OLSAT-8
- ✓ Provide parents with information about how you can prepare your child to take the OLSAT-8
- ✓ Q and A: If you have a question that you would like answered during or after the presentation, please use the Q and A feature and type your question in the box and Gifted/Talented Programs staff will address it there. However, be mindful that most questions from parents may be answered in the presentation.

# GIFTED/TALENTED PROGRAMS

## MISSION AND VISION

To identify gifted and talented students, including those from diverse racial, socioeconomic, linguistic, and cultural backgrounds, and provide high-quality differentiated opportunities for learning that meet students' particular abilities and talents.



California Department of Education(CDE)

# 7 GIFTED/TALENTED CATEGORIES



- a) Intellectual Ability Category
- b) Specific Academic Ability Category
- c) High Achievement Ability Category
- d) Creative Ability Category
- e) Visual Arts Ability Category
- f) Performing Arts Ability Category
- g) Leadership Ability Category

# **WHAT GIFTED IDENTIFICATION CATEGORY ARE THE STUDENTS TESTING FOR WITH THE OLSAT-8?**

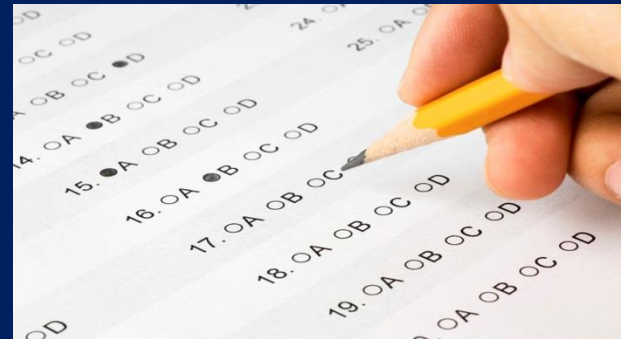
## The High Achievement Ability Category





# TYPE OF ASSESSMENT

Q. Is the OLSAT-8 an  
intellectual  
test?



A. No. The OLSAT-8 is an  
achievement test.

# OLSAT-8 & HIGHLY GIFTED

Q. Can a student be identified as highly gifted using the OLSAT-8?

A. No. Only an intellectual assessment can deem a student to be highly gifted. Again, the OLSAT-8 is an achievement test (High Achievement Ability Category).

# WHAT IS THE OTIS-LENNON SCHOOL ABILITY TEST EIGHTH EDITION (OLSAT-8)?

OLSAT-8 is a **nationally standardized, norm referenced**, group administered assessment related to a student's ability to learn and succeed in school.

- ✓ **Online** Test
- ✓ **In-Person** Test
- ✓ Administered at **School**
- ✓ Version: **Level C**



# WHY DO WE ADMINISTER THE OLSAT-8?

- ✓ Analysis of 2009 pilot data indicates that this assessment supports the District's goal for the Office for Civil Rights (OCR) to address the disproportionate number of underrepresented student populations and identify students who may be overlooked in the referral process.
- ✓ Supports Superintendent Alberto Carvalho's 2022-26 Strategic Plan.
- ✓ OLSAT-8 is a universal screening tool for gifted/talented identification.

# WHAT IS THE OTIS-LENNON SCHOOL ABILITY TEST EIGHTH EDITION (OLSAT-8)?

- ✓ Pearson Publishing has confirmed that the Level C online test is an appropriate administration for **second-grade** students.
- ✓ Your child's test results will be scored based on their **chronological age**, not grade-level.



# WHY DO WE ADMINISTER THE OLSAT-8?

## Benefits of Gifted and Talented Education (GATE)

Gifted and talented students need an academic environment that nurtures their unique learning abilities and supports their social-emotional needs in order to develop their full potential and thrive in a setting with their intellectual peers.



# ARE ANY STUDENTS EXEMPT?

Students who are exempt include:

- a) Students who take the CAA (California Alternate Assessments) or are on an alternative curriculum.
- b) Students previously identified as gifted (optional).
- c) Students whose parents have requested non-participation.
- d) Students who have previously taken the OLSAT-8 in second grade.
- e) Students who have previously taken the OLSAT-8 or have been pre-exposed.

# NOT SURE IF YOUR CHILD IS EXEMPT OR ALREADY GIFTED?

**Contact your  
child's teacher**



**Contact the  
school's GATE  
coordinator**





# Multilingual Students and English Learners

Participating **English learners or multilingual students** may be given directions using their determined primary language.

- ✓ For students who are new to the country
- ✓ School site decision
- ✓ Requires administrator approval



# **NO ACCOMMODATIONS OR MODIFICATIONS**

Due to assessment norms, accommodations or modifications will invalidate OLSAT-8 test results.

Should further accommodations or modifications be required in accordance with the student's Individualized Education Program (IEP) or Section 504 Plan, school personnel may contact Gifted/Talented Programs to discuss referral for an alternate assessment/category.

# Test Administration Settings

OLSAT-8 can be administered in any of the following three settings:

- ✓ Whole group (whole class)
- ✓ Small group(s)
- ✓ Individual



# TEST DATES

Q. What are the test administration dates for Spring 2025?

A. Schools may select a testing date(s) within one of two windows:

March 5–6, 2025

and/or

March 19–20, 2025



# TEST DATES

Q. Will there be a **make-up** testing date?

A. Yes.

**March 21, 2025\***



*\*Suggested make up date. Schools may make up student testing any time prior to the make-up date. Please contact your child's school to inquire.*

# OLSAT-8 PARENT NOTIFICATIONS

All parents of second-grade students will be receiving an **informational letter** from your child's school regarding the OLSAT-8 test date.



**IMPORTANT: ONLY** sign and return the letter to the school if you do **NOT** want your child to participate in the OLSAT testing. Otherwise, keep the letter for your records.

# NOT SURE WHEN YOUR CHILD'S SCHOOL WILL ADMINISTER THE OLSAT-8?

**Contact your  
child's teacher.**



**Contact the  
school's GATE  
coordinator.**



# VIRTUAL ACADEMY STUDENTS

**Virtual Academy (VA) students will take the OLSAT-8 test at their designated Welcome Centers**

- 1) All Virtual Academy second-grade teachers must share the OLSAT-8 information with their students and invite them to the Parent/Family Virtual Informational Session on February 13, 2025. This presentation will be recorded and posted on the GATE website:  
<https://www.lausd.org/gate>
- 2) Parents who want their students to participate, will complete a google form (provided by the Virtual Academy) to identify preferred testing date and location.



# VIRTUAL ACADEMY STUDENTS

## LAUSD Office of the Virtual Academy (Beaudry site)

Connie Brandstetter, Administrator of Instruction, Elementary  
Elizabeth Kane, Administrative Coordinator

## OLSAT-8 Point Person for Virtual Academies

Virtual Academy (VA) School Name	OLSAT-8 Point Person	Email
Arts & Entertainment VA	Anush Aleksanyan and Jacobi Durstenfeld	<a href="mailto:axa4120@lausd.net">axa4120@lausd.net</a> <a href="mailto:jlm5113@lausd.net">jlm5113@lausd.net</a>
Business & Entrepreneurship VA	Yolanda Corona	<a href="mailto:yolanda.corona@lausd.net">yolanda.corona@lausd.net</a>
Computer Science VA	Artine Asadoorian	<a href="mailto:axa1836@lausd.net">axa1836@lausd.net</a>
Int'l Studies & World Langs. VA	Suzi Maloof	<a href="mailto:sms7320@lausd.net">sms7320@lausd.net</a>
Leadership & Public Service VA	Shehan Bangayan	<a href="mailto:shehan.bangayan@lausd.net">shehan.bangayan@lausd.net</a>
STEAM VA	In Hee Kim	<a href="mailto:axk3976@lausd.net">axk3976@lausd.net</a>

# OLSAT-8 STRUCTURE

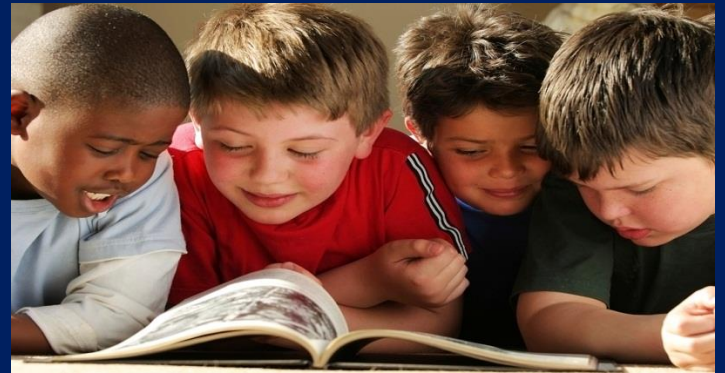
- ✓ Entire test is timed
- ✓ **2** sittings (usually)
- ✓ **60** questions in all
- ✓ **82** minutes (approximate) total administration time
- ✓ Students select their answers directly on the device.
- ✓ Test questions are read to students.



# WHAT DOES THE OLSAT-8 MEASURE?

A. The OLSAT-8 measures abilities related to School Success.

- Detecting likenesses and differences
- Recalling words and numbers
- Defining words
- Following directions
- Classifying
- Establishing sequence
- Solving arithmetic problems
- Completing analogies



# HOW ARE THESE PROCESSES MEASURED?

## Verbal

- ✓ Verbal Comprehension
  - Following Directions
- ✓ Verbal Reasoning
  - Aural Reasoning
  - Arithmetic Reasoning

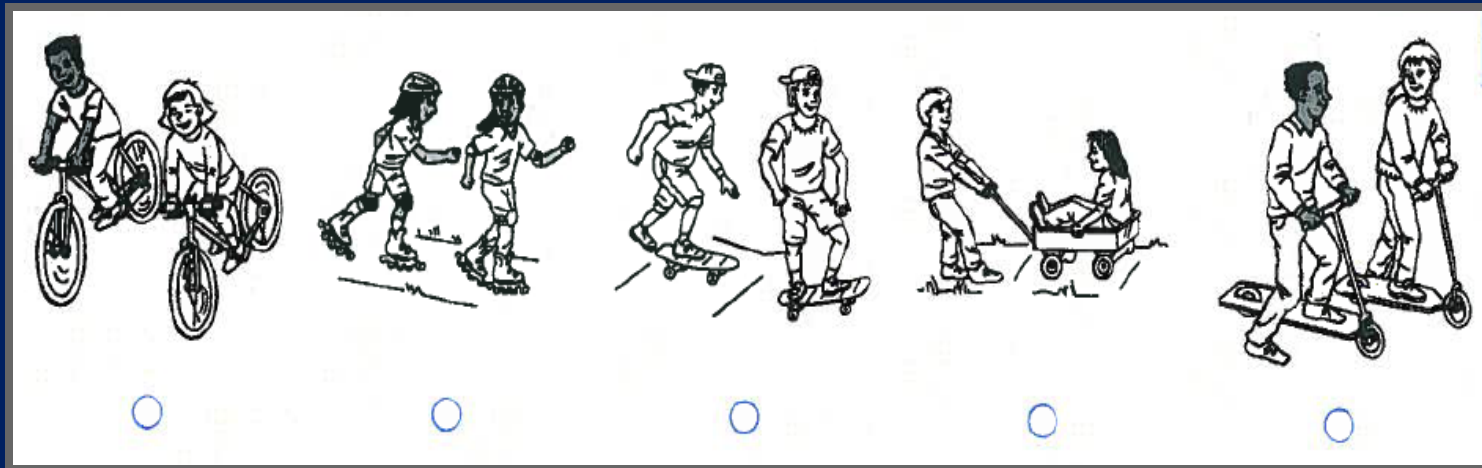
## Non-Verbal

- ✓ Pictorial Reasoning
  - Picture Classification
  - Picture Analogies
- ✓ Figural Reasoning
  - Figural Classifications
  - Figural Analogies
  - Pattern Matrix
  - Figural Series

# NON VERBAL: PICTURE REASONING

## Picture Classification

- Ability to determine which picture in a set of five pictures does not belong. (unifying concept)

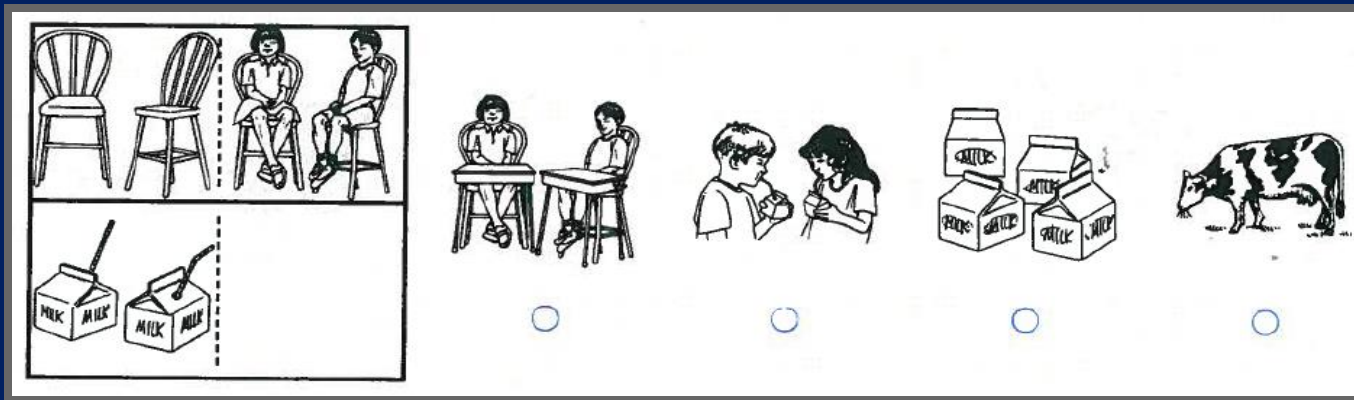


Sample item is confidential and proprietary

# NON VERBAL: PICTORIAL REASONING

## Picture Analogy

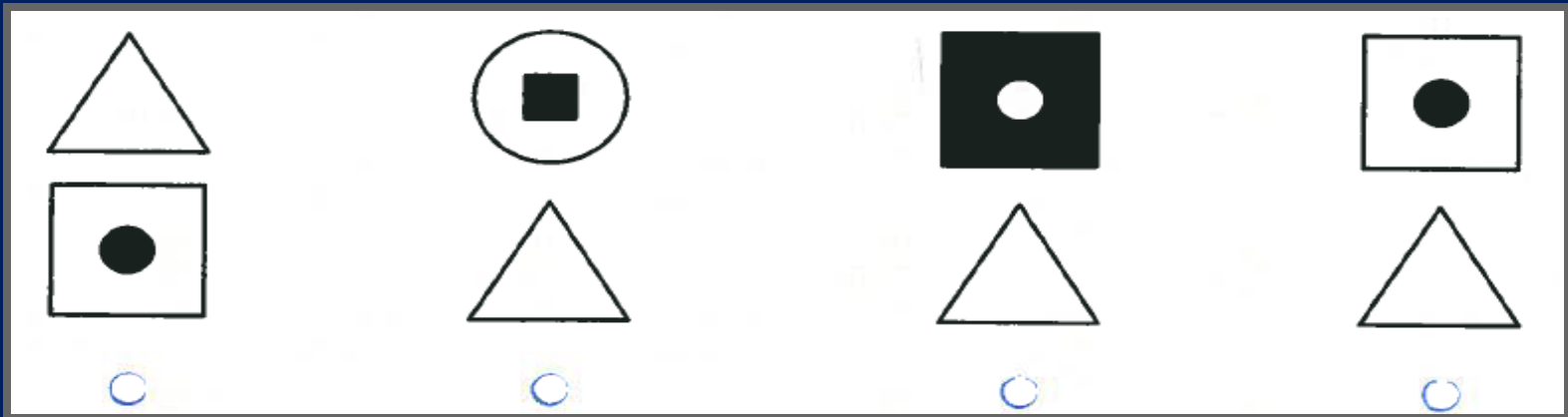
- Ability to infer the relationship between two pictures and select the picture that is related to the stimulus picture in the same way.



Sample item is confidential and proprietary

# VERBAL COMPREHENSION: FOLLOWING DIRECTIONS

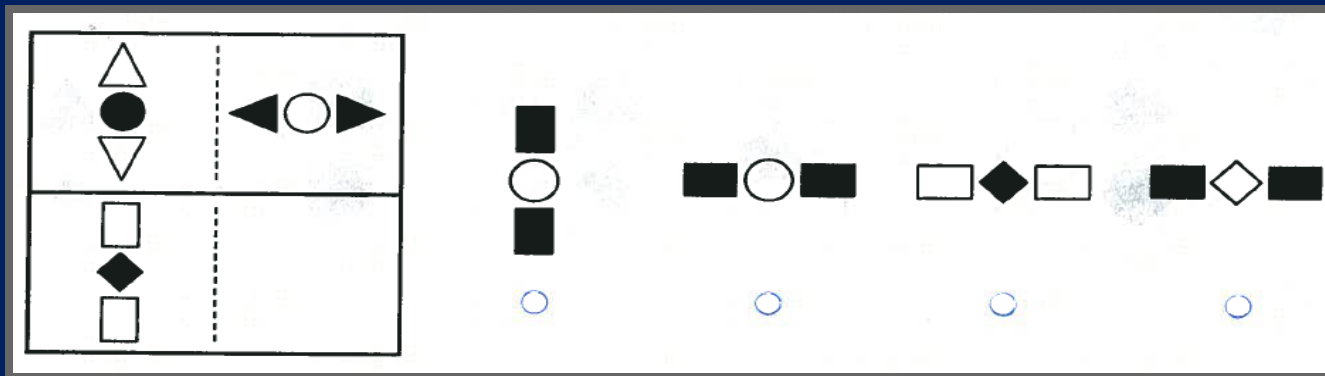
- Ability to match verbal description to pictorial representation (e.g. above, between, next to, etc.).



Sample item is confidential and proprietary

# FIGURAL REASONING: FIGURE ANALOGIES

- Ability to infer a relationship between a pair of geometric shapes and select the shape that is related to the stimulus in the same way.

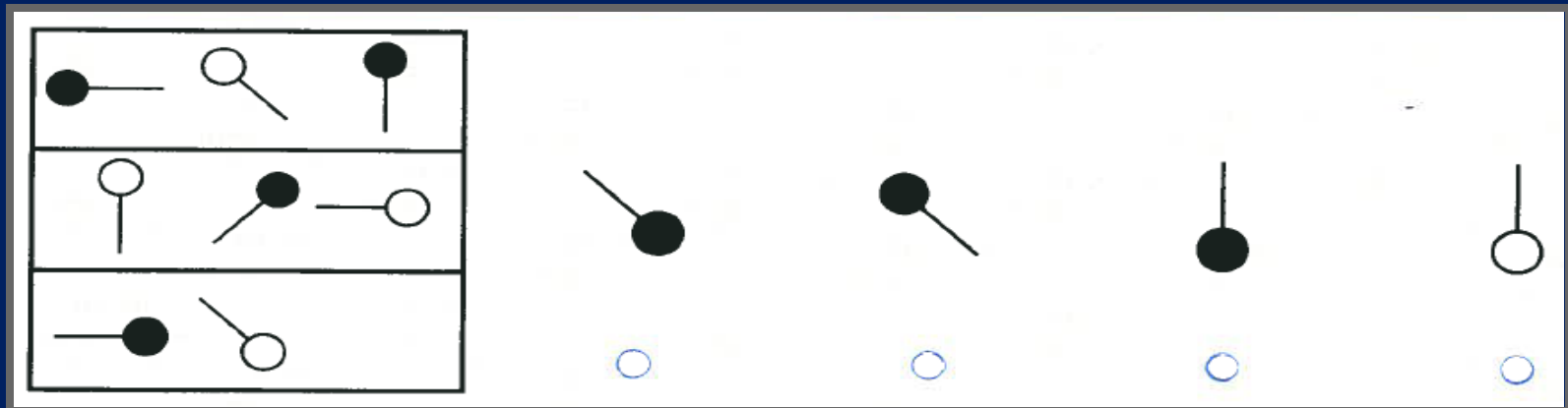


Sample item is confidential and proprietary



# FIGURAL REASONING: PATTERN MATRIX

- Ability to supply missing element in a matrix of geometric shapes (relationship of figures).



Sample item is confidential and proprietary

# OLSAT-8 PRACTICE TEST

- ✓ The **purpose** of this practice test is to prepare students to take the Otis-Lennon School Ability Test, Eighth Edition, (OLSAT-8), so that they will be familiar with the types of questions that will appear on the test.
- ✓ Students **must** take the online practice test.
- ✓ Students are permitted to take the OLSAT-8 practice test **an unlimited number of times** before the official testing period and should be given as much help as they need to complete the questions successfully.
- ✓ **The practice test is not scored.** Therefore, students should be given as much help as they need to complete the questions successfully.
- ✓ For most effective use, the practice test should be administered approximately **one week prior** to the regular test administration.

# OLSAT-8 PRACTICE TEST

- ✓ This is an official product, authorized and published by Pearson Publishing; administering this practice test will not invalidate test results.
- ✓ Students will take the practice test to simulate the actual test-taking experience.

# NOT SURE IF YOUR CHILD TOOK THE OLSAT-8 PRACTICE TEST ?

**Contact your  
child's teacher.**



**Contact the  
school's GATE  
coordinator.**



# HELP FOR YOUNG TEST-TAKERS

The OLSAT-8 has several features designed to make your child feel more comfortable with test-taking and to guide your child through the test.

- ✓ Sample items for each section of the test
- ✓ Use of pictures throughout the test
- ✓ Each subtest and item clearly marked
- ✓ Question prompts dictated by the teacher

# HOW TO PREPARE YOUR CHILD TO TAKE THE OLSAT-8



Things your child can do:

- ✓**REST**...Get a good night's sleep before taking the OLSAT-8.
- ✓**EAT**...A good breakfast on the morning of the OLSAT-8 is important.
- ✓**LISTEN**...Listen carefully to the directions the teacher gives and follow them exactly.
- ✓**TRY**...Do your best. Students are not expected to know the answer to every question. Some questions may seem hard, but students should keep trying and not give up.

# HOW TO PREPARE YOUR CHILD TO TAKE THE OLSAT-8

Things YOU can do:



- ✓ **DISCUSS**...Help your child understand that the OLSAT-8 provides a chance to show what you know and how the teacher can best help you learn.
- ✓ **SUPPORT**...Make sure your child understands that the OLSAT-8 scores simply give information and will not be used to punish students.
- ✓ **RELAX**...Reassure your child about the test-taking experience. Students who are calm and sure of themselves do better.

# TEST RESULTS

Q. When will schools receive test results?

A. Student results are tentative to be released during the Spring 2025 semester. Test results will be mailed directly to each school.





# TEST RESULTS

Q. We received the score reports.

*Where should I look for the qualifying score?*



# OLSAT-8 ELIGIBILITY CRITERIA

## 2024-2025

### Identification Criteria in the High Achievement Ability Category:

OLSAT-8 Test Component	Qualifying Score Criteria (Age Percentile Rank-APR)	
Total Age-Based Score	95 or above	
Nonverbal Age-Based Score	95 or above	
Verbal Age-Based Score	95 or above	
Total Age-Based Score Only	90 – 94	Meal Code 1, 2, or 5

# OLSAT-8 ELIGIBILITY CRITERIA

## 2024-2025



### STUDENT/HOME REPORT |

SCHOOL : LAUSD  
DISTRICT : LAUSD

TEST DATE : 03/01/2023  
AGE : 7 YRS 11 MOS  
GRADE : 2

OLSAT8 LEVEL : C

#### Purpose

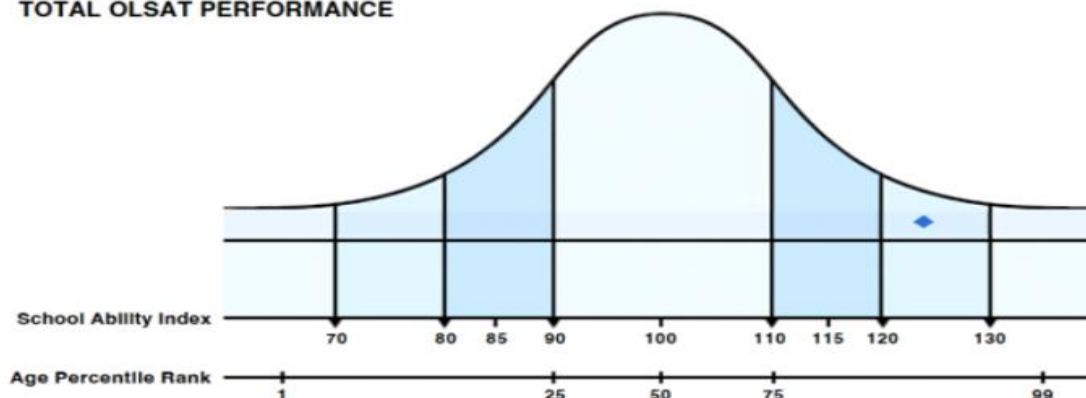
The *Otis-Lennon School Ability Test*® has two parts, a Verbal and a Nonverbal Scale. The Verbal Scale measures ability using tests that require verbal reasoning and comprehension. The Nonverbal Scale measures ability using tests that require understanding spatial and serial relationships among geometric shapes.

#### Intended Use

- Measure students' ability to answer Verbal and Spatial (Nonverbal) test questions. The ability to answer those questions is strongly related to school success for students in grades K – 12.
- Identify those students who demonstrate high abilities and who may benefit from a Gifted & Talented program

Your student was recently administered the *Otis-Lennon School Ability Test*®, Eighth Edition (OLSAT®8). This report contains an explanation of the OLSAT®8 and how your student performed.

#### TOTAL OLSAT PERFORMANCE



#### ADDITIONAL SCORES

	Total	Verbal	Non-verbal
Raw Score/ No. Possible:	51/60	24/30	27/30
SAI:	124	119	126
Age PR:	93	88	95
Age Stanine:	8	7	8
Scaled Score:	616	598	639
Grade PR:	91	83	92
Grade Stanine:	8	7	8

#### 124 SCHOOL ABILITY INDEX

This student's score has been placed on the graph to show how it relates to the scores of other students of the same age. Most scores will fall between 90 and 110, and scores in this range are considered to be average. Fewer students will have scores that fall between 70 to 89 and 111 to 130, and an extremely small number will have scores that fall below 70 or above 130.

#### 93 AGE PERCENTILE RANK

Percentile Ranks range from a low of 1 to a high of 99. This score is used to compare student performance to that of a national sample of students of the same age. For example, if a child who is six years old has a Percentile Rank of 75, this means the child scored as well as or higher than 75 percent of six year old students who were tested. Please note that Percentile Rank and Percent Correct have different meanings.

# OLSAT-8 ELIGIBILITY CRITERIA

## 2024-2025

### What Does Age Percentile Rank Mean?

- ✓ This score is used to compare student performance to that of a **national sample** of students of the **same age**.
- ✓ Percentile Ranks range from a low of 1 to a high of 99. For example, if a child who is six years old has a Percentile Rank of 75, this means the child scored as well as or higher than 75 percent of six year old students who were tested.
- ✓ Please note that **Percentile Rank and Percent Correct** (indication of how many questions your child answered correctly) have different meanings.





# FAQS

**Q.** If my child is identified gifted in the High Achievement Ability Category, does he/she need to re-apply for the category next year?

**A. No.** As with all gifted categories in the LAUSD, once a student is identified gifted, the gifted identification will remain with the student for the duration of his/her enrollment at LAUSD.

# FAQS

Q. If my child does not meet the criteria on the OLSAT-8, can he/she still be referred in the Intellectual Ability Category?

A. **Yes.** However, all students still need to be thoroughly reviewed by the on-site GATE Review Committee for appropriateness of referral.

# **AUTOMATIC INTELLECTUAL ABILITY REFERRAL**

- ✓ Students who received an Age Percentile Rank (APR) score of 99 on the **Total, Verbal or Nonverbal** scales of the OLSAT-8 must be automatically referred by the school-site GATE coordinator in the Intellectual Ability category for the following school year.
- ✓ If your child meets the 99 APR score criteria, you may follow-up with your school site GATE coordinator to make a referral in the Intellectual Ability category, if they have not already done so.



**THESE STUDENTS ARE IDENTIFIED AS  
*GIFTED...***

**NOW WHAT?**





# NEXT STEPS



*Gifted identification is not the final goal of this process.*

- ✓ Identification is the tool that allows teachers to make instructional and programming decisions to best meet the academic and social-emotional needs of students.
- ✓ The identification process has little value without appropriate clustering and differentiated instruction to follow.

# NOT SURE IF YOUR CHILD HAS BEEN PLACED IN A GATE PROGRAM?

**Contact your  
child's teacher.**



**Contact the  
school's GATE  
coordinator.**



# **FOLLOW US AND STAY CONNECTED!**



# COMMENTS & QUESTIONS?

