

DREAM IT

Achieve it!

LAUSD
UNIFIED



Opening Doors with Dual Enrollment



Brenda Pensamiento | Shelly Alavez

Introductions



Brenda Pensamiento
Administrator, School
Counseling Services



Shelly Alavez
Counseling Coordinator,
School Counseling Services

Outcomes



Gain understanding of LAUSD and LACCD DE Program



Accessing resources to support student achievement

Like Me

I will read a series of statements. Please add “like me” in the chat, if the statement applies to you.



Agenda

1. Dream It Achieve It Initiative
2. Overview of DE
3. Concurrent Vs Dual Enrollment
4. Enrolling in DE and CE courses
5. Implications and Considerations
6. Student & Family Roles
7. Resources
8. Q&A



Dream It, Achieve It



- A Renewed Commitment
- Two for One for Everyone
- Prioritized by Leadership
- Aligned to LAUSD Strategic Plan and Vision 2030

Dream It, Achieve It

Discover Your Pathway to Success



Two for One for Everyone

Earn double the achievement.

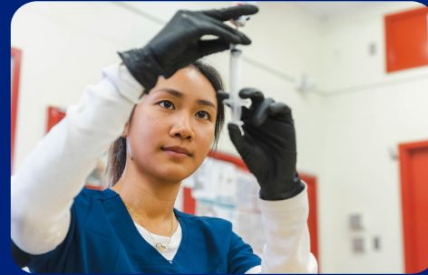
Graduate with your high school diploma and an associate's degree from an LA Community College - or complete a career certification before graduation.



Get Early College Credit

Get ahead of the game.

Take college classes while in high school and earn real college credits that put you one step closer to your future.



Apply for an Internship

Learn. Earn. Succeed.

Jump-start your career through LAUSD's "earn and learn" opportunities - gain hands-on experience and build your résumé while you're still in school.



Explore a Career in a Trade

Build your future.

Join a registered pre-apprenticeship or apprenticeship program and develop in-demand trade skills that open doors to lifelong careers.

<https://dreamit.lausd.org/>

Dream It, Achieve It

Explore Your Passions, Gain Real-World Experiences, and Prepare for Life After High School - Whether it's College, Career, or Beyond.



Assembly Bill 288 (AB 288)

2015 – Authorized community college (CC) and school districts to offer and expand opportunities for students to develop pathways from HS to CC to:

- *Improve graduation rates*
- *Achieve college and career readiness*
- *Offer preparation for Career-Technical Education*

In September 2016, LA Unified was the first District to enter into a College and Career Access Pathway agreement with LACCD

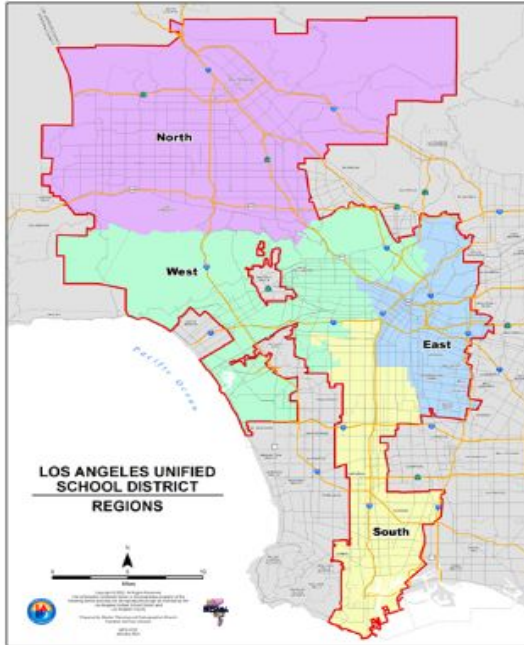


What is Dual Enrollment

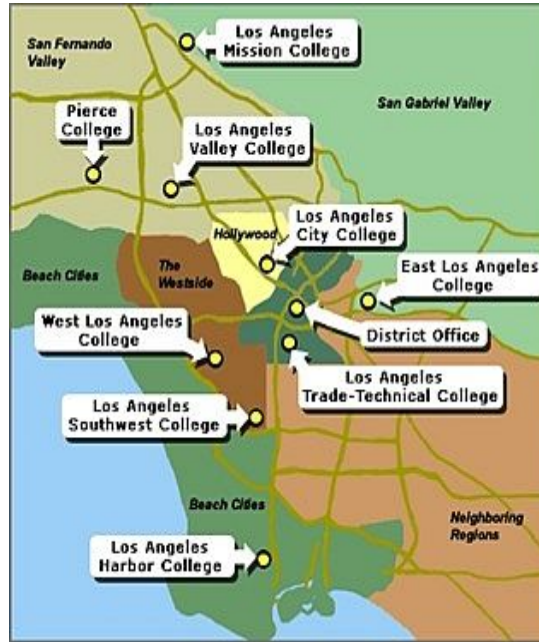
- An opportunity for high school students to take college courses taught by college professors at their high schools.
- These classes can count for **both high school graduation requirements and college credit.**
- **High school student** have an opportunity to explore careers and prepare for a successful college experience.



Who are our partners?



4 Regions



9 Colleges

Los Angeles Community College District (LACCD)

1. Los Angeles Mission College
2. Pierce College
3. Los Angeles Valley College
4. Los Angeles City College
5. East Los Angeles College
6. Los Angeles Trade-Tech College
7. Los Angeles Southwest College
8. Los Angeles Harbor College
9. West Los Angeles College

Benefits of Dual Enrollment



Save money!
Tuition is **FREE!**



Access college
resources and services.



Save time.



Standout on college
applications.



Preview college life.



Boost your GPA.



Explore career
interests.



Dual Enrollment vs. Concurrent Enrollment

| | Dual Enrollment | Concurrent Enrollment |
|---|--|--|
| Where You Learn | At select LAUSD high schools, usually during the regular school day. | At the community college or online, depending on the course. |
| Who's in the Course | Your high school classmates. | Other college students from everywhere. |
| Cost | FREE! Tuition, fees, and books are covered. | Tuition is free, but you might need to pay for transportation and books. |
| Where Your Grades Go | LAUSD and LACCD record credits earned. | In order for the course and credit to be recorded, YOU will need to give your high school your official college transcript. |
| High School Credit | All courses will count for high school credit. | Not all courses will count for high school credit. Talk to your high school counselor BEFORE signing up. |
| Support for Students with IEPs or 504 Plans | Your LAUSD high school is responsible for providing services and accommodations. | YOU are responsible for accessing services and accommodations through the college's Disabled Student Programs and Services. |

Who Can Take DE Classes?



Dual enrollment is open to **ALL** high school students.



There is **no specific GPA** or special test scores required to enroll.



No matter your **background, academic experience, or immigration status**, every high school student can participate.



What courses are available at my school?



DE course offerings vary by school site



All forms **MUST** be approved by your student's counselor



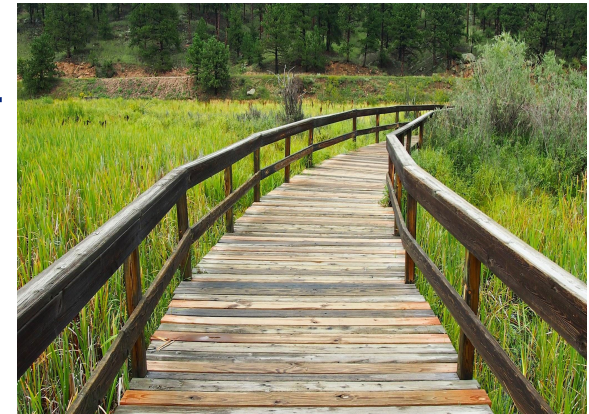
Students enroll in DE are also college students and can access college resources



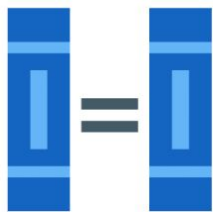
Pathways

Opportunities for students include access college courses that not only grant high school credits but also affords the opportunity to earn an Associate in Arts/Associate in Science Degree and Certificates.

- **California General Education Transfer Curriculum (Cal-GETC):** Facilitating a seamless transfer to CSU or UC universities
- **Career Technical Education (CTE):**
Developing job-specific skills aligned with industry needs
- **Associate's Degree Programs:**
Providing a clear path towards completion of a two-year degree



Course Types



Equivalent Courses

College courses that are approved by LAUSD and equivalent to an LAUSD High School course.



Non-Equivalent Courses

College course does not have an approved LAUSD equivalent course.

- Can not be applied towards a course graduation requirement



Select courses will be calculated in the LAUSD GPA with an augmentation For Class of 2026 and beyond.



LAUSD-LACCD Dual and Concurrent Course Guide for Class of 2026 and Beyond

How to Sign Up for Dual Enrollment

Before you sign up, **set up a meeting with your high school counselor** to identify the dual enrollment courses that can help you accomplish your goals.

When you're ready to sign up, you can expect the process to look like this:

1. **Complete an application for the LACCD community college you want to attend on [CCCapply.org](https://cccapply.org).**
Instructions: bit.ly/CCCApplyGuide
2. **Complete and submit a Dynamic K-12 Form.** In addition to signing up to be a student, you need to fill out a separate parent consent form to enroll in dual enrollment. Each college has its own form.
Instructions: bit.ly/DynamicFormGuide



Impact of Grades

Receiving a D or F in a college class may result in...

- Negative Impact on College GPA & high school GPA
- Academic Probation
- Loss of Financial Aid



Student Responsibilities

- **Maintain Academic Performance**
 - Completes coursework and assignments
 - Maintains good grades
 - Attends & Participates in all class sessions
- **Time Management**
 - Balances high school and college commitments
 - Plan to meet deadlines
- **Advocacy**
 - Reaches out to counselor, dual enrollment liaison, teacher, and professor for support.



Parent/Family Role

Supporting Academic Success

- Help them manage their time effectively to balance both sets of coursework.
- Be aware that students are expected to follow the same academic standards as college students, and parental involvement is limited due to FERPA (Family Educational Rights and Privacy Act).
- Ensure your child is aware of and meets deadlines, such as assignment submissions and course registration.



Parent/Family Role

Maintaining Open Communication

- Stay in regular communication with your child's high school counselor to stay informed about their progress and any potential challenges.
- Address any concerns or issues your child may have regarding coursework, grades, or deadlines with the school counselor.



Parent/Family Role

Understanding Program Requirements

- Familiarize yourself with the dual enrollment program's policies, grading implications, and credit transfer processes.

Providing Emotional Support

- Offer emotional and motivational support as your child navigates the challenges of balancing high school and college coursework.
- Encourage a healthy balance between academic commitments, extracurricular activities, and personal well-being.



Resources



Resources

Discover College in High School

LAUSD + LACCD Dual Enrollment Guide

Developed by **CAUSE IMPACTS**

A guide to help you and your family discover how to **earn college credit** while you're still in high school.

UNITED WAY OF GREATER LOS ANGELES | UNITELA | L.A. region K-16 collaboration | LAUSD UNIFIED | UNIVERSITY OF CALIFORNIA

Descubre la Universidad desde la Preparatoria

Inscripción Dual en el LAUSD + en el LACCD

Desarrollado por **CAUSE IMPACTS**

Una guía para ayudarte a ti y a tu familia a descubrir cómo **obtener créditos universitarios** mientras aún estás en la preparatoria.

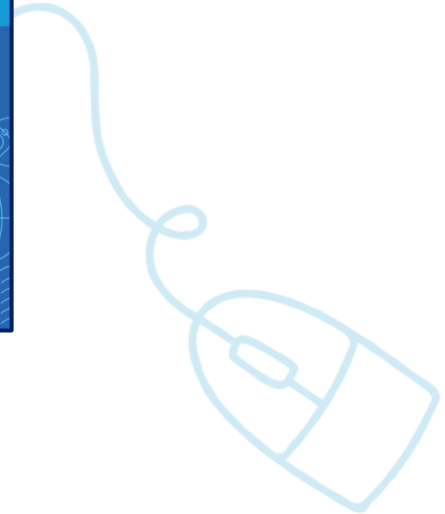
UNITED WAY OF GREATER LOS ANGELES | UNITELA | L.A. region K-16 collaboration | LAUSD UNIFIED | UNIVERSITY OF CALIFORNIA

Guides

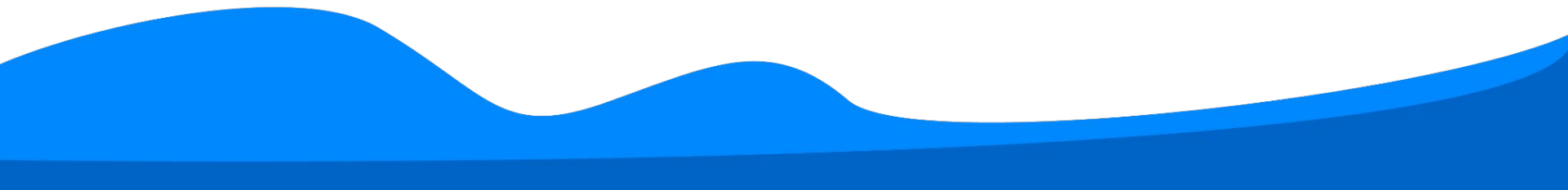
Resources



[LAUSD - LACCD DE/CE Guide](#)



Q&A



Division of Instruction



Brenda Pensamiento
Administrator
Email: bpensami@lausd.net



Esther Dabagyan,
CTE-Linked Learning Administrator
Email: esther.dabagyan@lausd.net



Shelly Alavez
Counseling Coordinator
Email: sxa3900@lausd.net



Tomoko Price,
CTE-Linked Learning
Dual Enrollment Prog. Supervisor
Email: tomoko.price@lausd.net

LAUSD School Counseling Contacts

REGION EAST



Alex Hernandez
Region East
Email: julio.hernandez@lausd.net



Gardenia Gonzalez
Region East
Email: gxg0944@lausd.net



Eiman Hernandez
Region East
Email: exh6016@lausd.net

REGION SOUTH



Samuel Diaz
Region South
Email: sed03621@lausd.net



Gina Kim
Region South
Email: gxk1383@lausd.net



Mariana Bolanos
Region South
Email: mxb84541@lausd.net

REGION NORTH



Stephanie Lartelier
Region North
Email: stephanie.lartelier@lausd.net



Yolanda Jimenez
Region North
Email: yolanda.jimenez@lausd.net



Angelica Streif
Region North
Email: axs03761@lausd.net

REGION WEST



Earlondra Jackson
Region West
Email: emj96141@lausd.net



Maria Whittington
Region West
Email: maa8635@lausd.net

Thank you

Contact Us:

Brenda Pensamiento - bpensami@lausd.net

Shelly Alavez - sxa3900@lausd.net



Appendix

- [LAUSD School Counseling Services – Dual Enrollment](#)
- [LAUSD CTE-Linked Learning](#)
- [LAUSD – LACCD DE/CE Guide](#)
- [Student and Family Guides](#)

Dual Enrollment Guide

