

Multilingual Multicultural Education Department

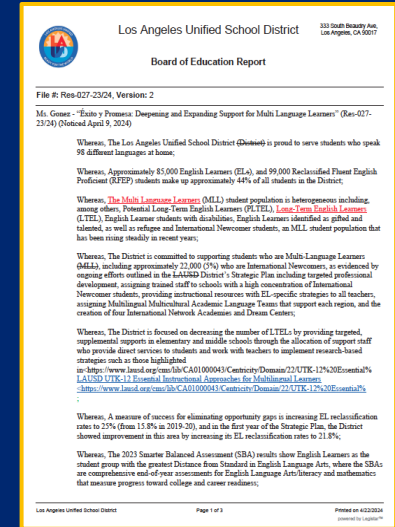
Éxito y Promesa: Deepening and Expanding Support for Multi Language Learners Board Resolution

October 7, 2025

Éxito y Promesa: Deepening and Expanding Support for Multi Language Learners Board Resolution

Resolution reaffirmed LAUSD's commitment to supporting the success of Multi Language Learners (MLLs)

- Ensuring students have access to a rigorous, well-rounded, high-quality education
- Enhancing A-G graduation requirements and academic offerings
- Updating communication protocols with families and improving language interpretation services
- Building employee capacity for culturally responsive practices
- Establishing partnerships with academic institutions and organizations specializing in multicultural education
- Providing additional support to schools with high numbers of Multilingual Learners and International Newcomers



Family Communication

The Multilingual Multicultural Education Department (MMED) supports family communication by ensuring that parents and families of English Learners and multilingual students receive clear, accessible, and culturally responsive information in their home language as follows:

- **Parent Workshops & Trainings** – Schools hosts two sessions to help families understand reclassification, graduation requirements, instructional programs, and how to support learning at home.
- **Multilingual Resources** – Published quarterly (and as updates are available) on the MMED website, our multilingual newsletter—along with guides, slide decks, and digital communications—keeps families informed and engaged.
- **Partnerships with FACE and Community Organizations** – Collaborates with the Family and Community Engagement Office (FACE) and groups like CHIRLA, CARECEN, and UCLA to expand outreach and ensure families know their rights and available supports.

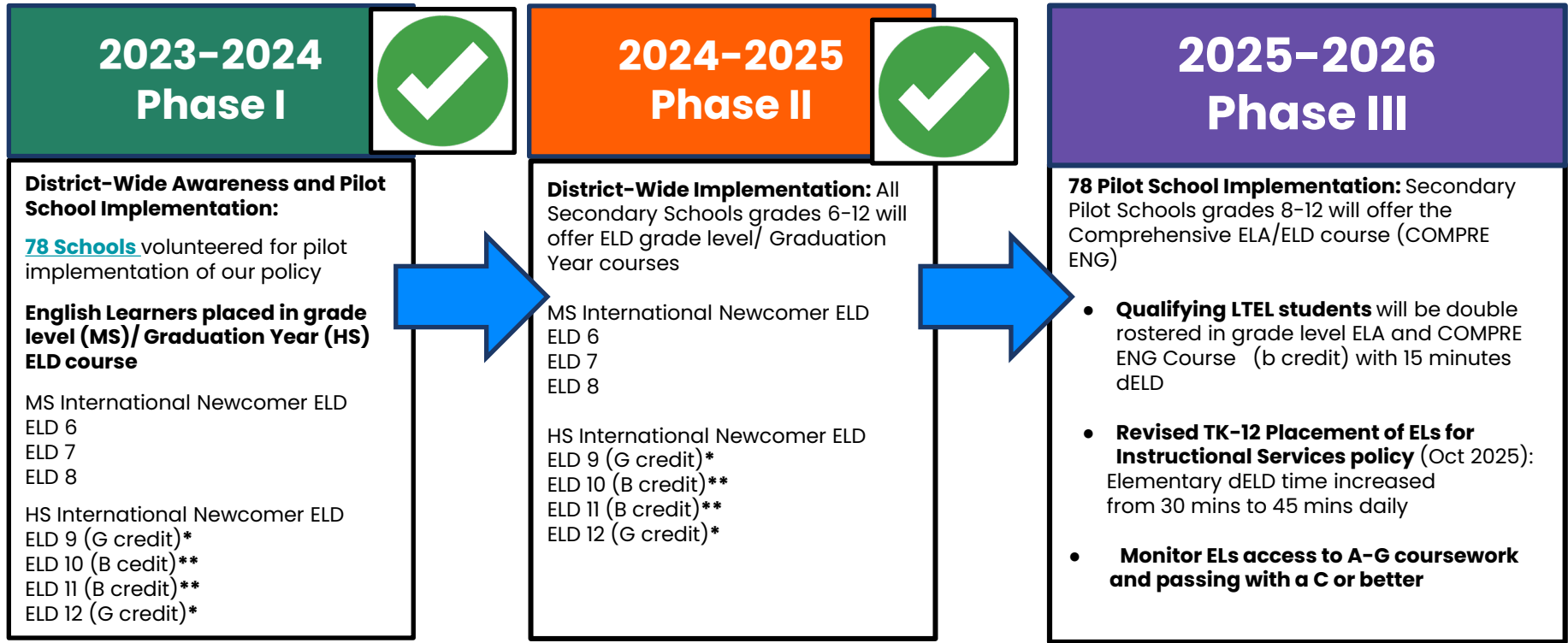
Community Based Organization Partnerships

MMED partners with community based organizations and universities to connect multilingual learners and families with academic, social-emotional, legal, and community supports, creating a strong network that fosters student success and family engagement

- CIELO
- CARECEN
- CHIRLA
- UCLA Family Legal Clinic
- USC Immigration Support

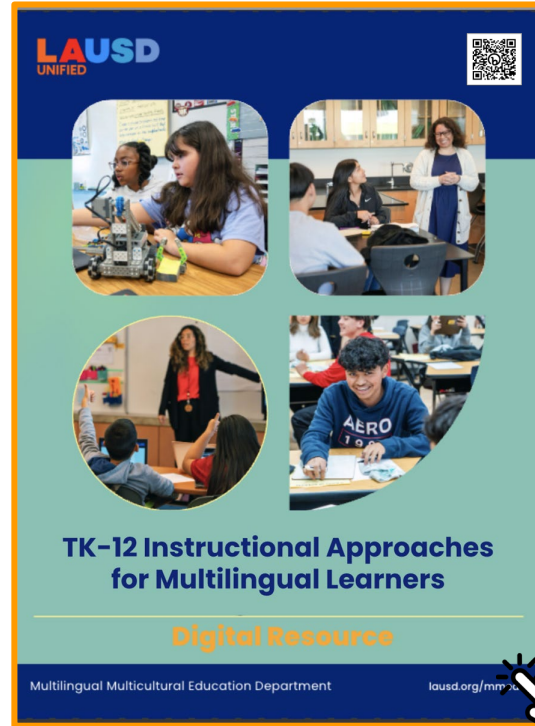


High Quality Education: TK-12 EL Placement Policy



*G credit - Elective
**B credit - English

Fostering Capacity Through Shared Academic Expertise



Collaboration with Departments Across the District

Department	Action	Lead
Student Health and Human Services Student Support Programs	Provide Social-Emotional Well-Being and Academic Success and Support Family Engagement.	Joel Cisneros, Executive Director
Student Support and Attendance Services	Promote regular attendance by helping families overcome barriers and linking them to resources that support student engagement and success.	Dr. Elsy Rosado, Administrator
Division of Adult and Career Education	Accelerated College and Career Transition Program (AC2T) and Adult High School Diploma Program.	Matthew Oberlander, Director
Virtual Academies	Provide virtual, self-paced ELD coursework with visual supports, translation tools, and interactive activities to ensure continuity of learning for frequently moving newcomer families.	Latasha Buck, Executive Director
Division of Instruction	School Counselor A-G graduation requirements, Transcript evaluation and Career Technical Education (CTE) courses.	Brenda Pensamiento, Administrator
Government Affairs Office	Schedules monthly meetings on state and federal legislation to expand resources for English Learners, immigrant, and refugee students, while working with elected officials to advance policies aligned with LAUSD's Master Plan.	Martha Alvarez, Chief of Legislative Affairs

Supports to Schools: High Concentrations of Multilingual Learners and International Newcomers

The Multilingual Multicultural Education Department assigns school-based positions at high EL enrollment schools, including:

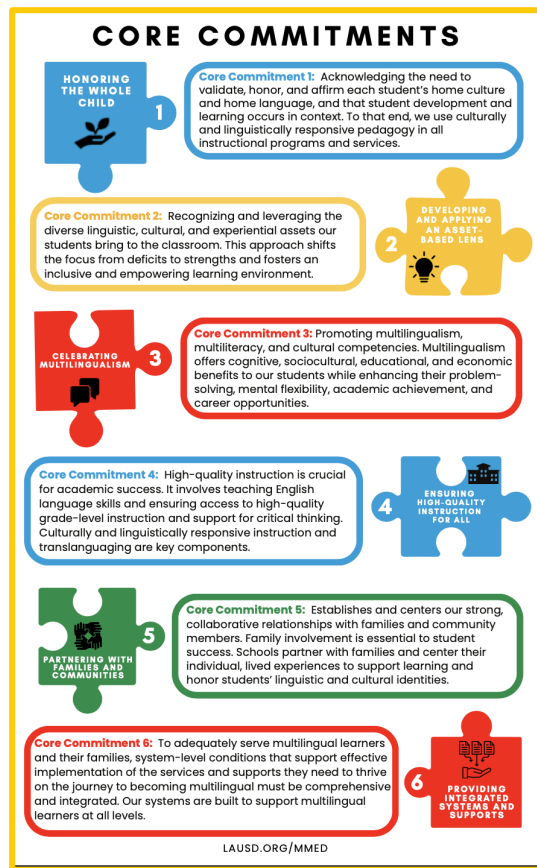
- Academic Language Coaches
- International Newcomer Instructional Aides
- APOLO (Asian Pacific & Other Languages Office) Aides
- Refugee Wellness Navigators
- International Newcomer Coaches and Counselors

Their focus is to:

- **Provide** direct support to students, families, and staff
- **Serve** as liaisons with community partners
- **Design** differentiated instructional supports to accelerate language development
- **Use data** to monitor and guide academic progress



Master Plan Core Commitments



Student Voices



[Video link](#)