

# ECO-SUSTAINABILITY OFFICE

## Schoolyard Greening through Extended Learning Opportunities Program (ELOP)

Greening Schools and Climate  
Resilience Committee Meeting

Christos Chrysiliou, FAIA, LEED AP  
Chief Eco-Sustainability Officer

September 24, 2025







# AGENDA

- Expanded Learning Opportunities Program (ELOP)
  - Program Overview
  - Selection Criteria
  - Completed Projects
  - Projects in construction
  - Projects in pre-construction and design



ESO staff and 2025 summer interns visiting the completed Marianna ES ELOP project





# Program Overview

## Green Schoolyard Improvement Program:

This greening program, funded by ELOP, enhances outdoor spaces used for before- and after-school activities by replacing asphalt with green spaces, incorporating native plants, natural turf, tree shade, and decomposed granite.

## 34 ELOP Greening Projects:

- 12 completed
- 11 projects in construction
- 10 projects in bid and award
- 1 projects in design

## DSA Coordination

ESO coordinated with DSA to streamline the project design process

**ELOP Greening at the first 32 school sites will add over 800 trees and replace over 600,000 square feet of asphalt with green space at LAUSD campuses!**



Wilton ES - ELOP



Hamasaki ES - ELOP



Marianna ES - ELOP

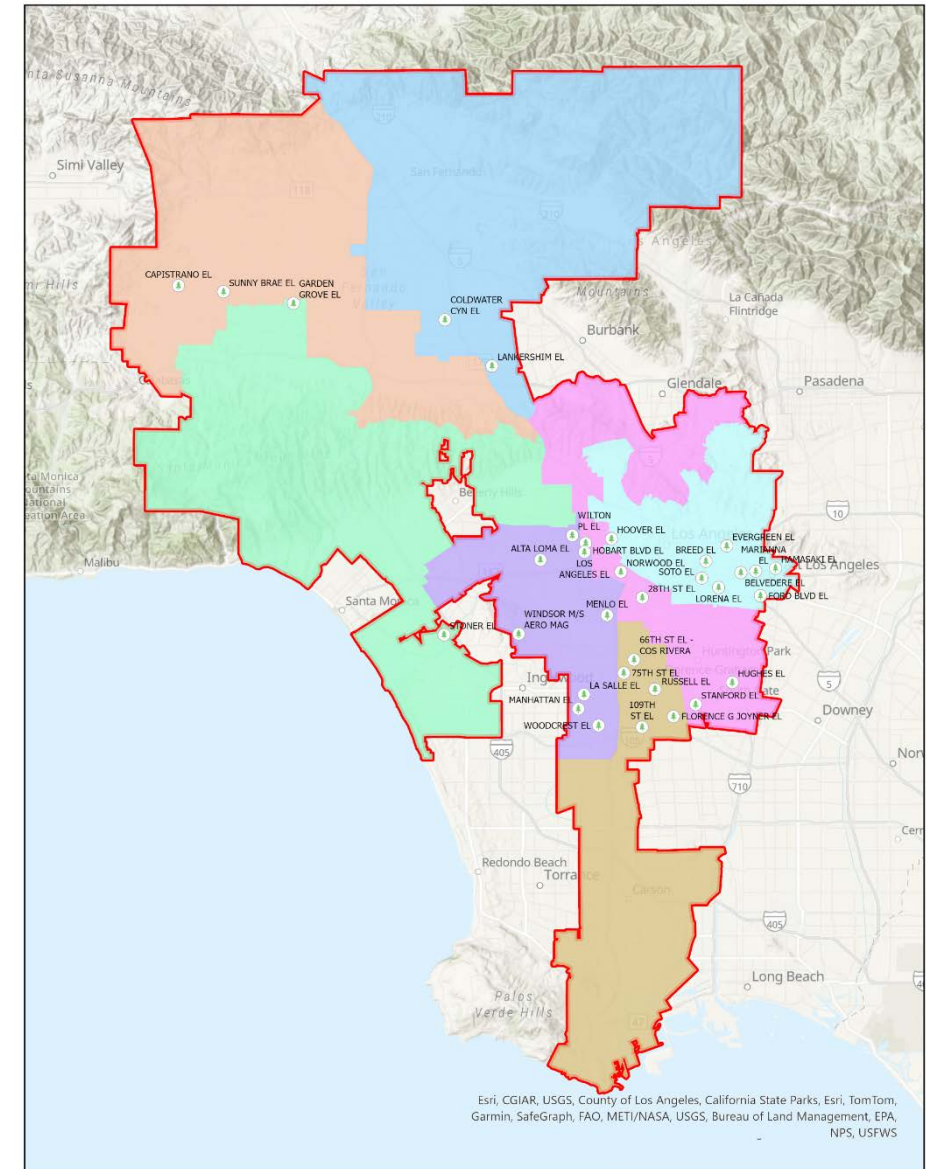


Stoner ES - ELOP



# Selection Criteria

- Elementary schools were selected in each Board District to ensure a balanced distribution of greening projects across LAUSD.
- Schools were assessed and ranked on the Greening Index 1.0.
- Consideration was given to the 2021–22 unduplicated pupil count, including students eligible for free/reduced-price meals, English learners, and foster youth.
- Sites without other large greening projects in planning or in process were prioritized.
- Two schools were selected to address pre-existing site concerns and a recurring safety hazard.







# Completed Projects



Wilton Place ES - ELOP

## 12 Completed ELOP Greening Projects:

- Wilton Place ES (BD 1) - June 2024
- Capistrano ES\* (BD 3) - June 2024
- Hamasaki ES\* (BD 2) - November 2024
- Marianna ES\* (BD 2) - November 2024
- 109th ES\* (BD 7) - September 2024
- 118th ES\* (BD 7) - September 2024
- Stoner Avenue ES (BD 4) - October 2024
- Coldwater Canyon ES\* (BD 6) - December 2024
- Florence G. Joyner ES\* (BD 7) - December 2024
- Russell ES\* (BD 7) - December 2024
- Belvedere ES\* (BD 2) - June 2025
- Lankershim ES (BD 6) - July 2025

\*Projects designed by LAUSD Landscape Architecture Unit





# Schoolyard Greening Impact



"The [ELOP] greening project is a breath of fresh air for my students. They tell me now our school is beautiful. Our school community has embraced the changes, and our sense of community is stronger than ever. Thank you for including our school in the project and creating a welcoming environment at Marianna."

-Principal Vargas, Marianna Elementary School





# Wilton Elementary School

## SCOPE:

- Replaced asphalt areas with permeable surfaces. Installed native plants, trees, and irrigation
- Developed nature-based areas with trees, boulders and decomposed granite

Construction start date: February 2024

Completion date: June 2024

Board District: 1

Project area size: 5,756 SF

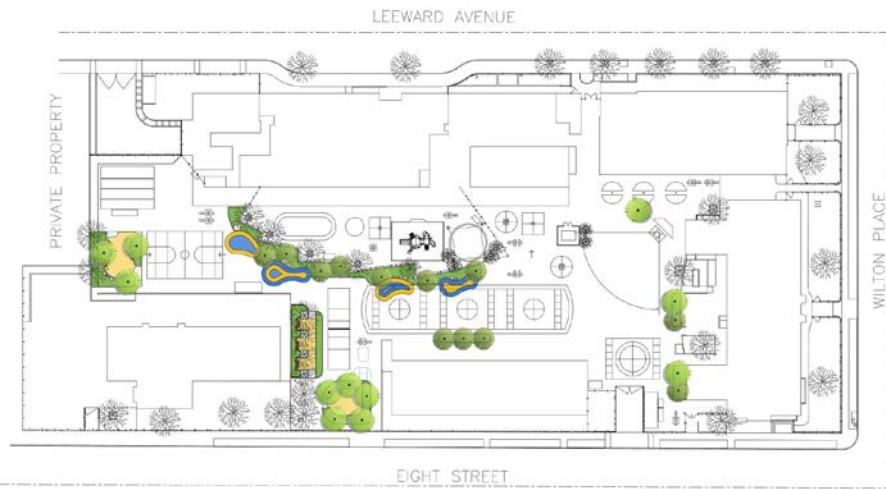
Project budget expended: \$892,282

Project budget per SF: \$155

Asphalt removed: 4,132 SF

Area of landscaping: 3,049 SF

Number of trees planted: 22



Before



After



Before



After





# Capistrano Elementary School

## SCOPE:

- Replaced asphalt areas with permeable surfaces.  
Installed native plants, trees, and irrigation
- New areas of decomposed granite

Construction start date: February 2024

Completion date: June 2024

Board District: 3

Project area size: 2,340 SF

Project budget expended: \$507,783

Project budget per SF: \$217

Paving removed: 2,240 SF

Area of landscaping: 2,240 SF

Number of trees planted: 15



Before



After



Before



After





# Marianna Elementary School

## SCOPE:

- Replaced asphalt areas with permeable surfaces. Installed native plants, trees, grass field, and irrigation
- Developed nature-based areas with trees, boulders and decomposed granite

Construction start date: February 2024

Completion date: November 2024

Board District: 2

Project area size: 11,842 SF

Project budget expended: \$999,235

Project budget per SF: \$84

Asphalt removed: 11,274 SF

Area of landscaping: 3,640 SF

Area of turf: 7,149 SF

Number of trees planted: 22



Before



After



Before



After





# Hamasaki Elementary School

## SCOPE:

- Replaced asphalt areas with permeable surfaces. Installed native plants, trees, grass field, and irrigation
- Developed nature-based areas with trees, boulders and decomposed granite

Construction start date: February 2024

Completion date: November 2024

Board District: 2

Project area size: 6,403 SF

Project budget expended: \$804,896

Project budget per SF: \$126

Asphalt removed: 6,403 SF

Area of landscaping: 2,883 SF

Area of turf: 3,001

Number of trees planted: 15



Before



After



Before



After





# 109th Street Elementary School

## SCOPE:

- Replaced asphalt areas with permeable surfaces. Installed native plants, trees, grass field with shade trees, and irrigation
- Developed nature-based areas with trees, boulders and decomposed granite

Construction start date: February 2024

Completion date: October 2024

Board District: 7

Project area size: 15,156 SF

Project budget expended: \$1,016,909

Project budget per SF: \$67

Paving removed: 15,156 SF

Area of landscaping: 4,436

Area of turf: 7,270

Number of trees planted: 32



Before



After



Before



After





# 118th Street Elementary School

## SCOPE:

- Replaced asphalt areas with permeable surfaces. Installed native plants, trees, and irrigation
- Developed nature-based areas with trees, boulders and decomposed granite

Construction start date: February 2024

Completion date: October 2024

Board District: 7

Project area size: 5,984 SF

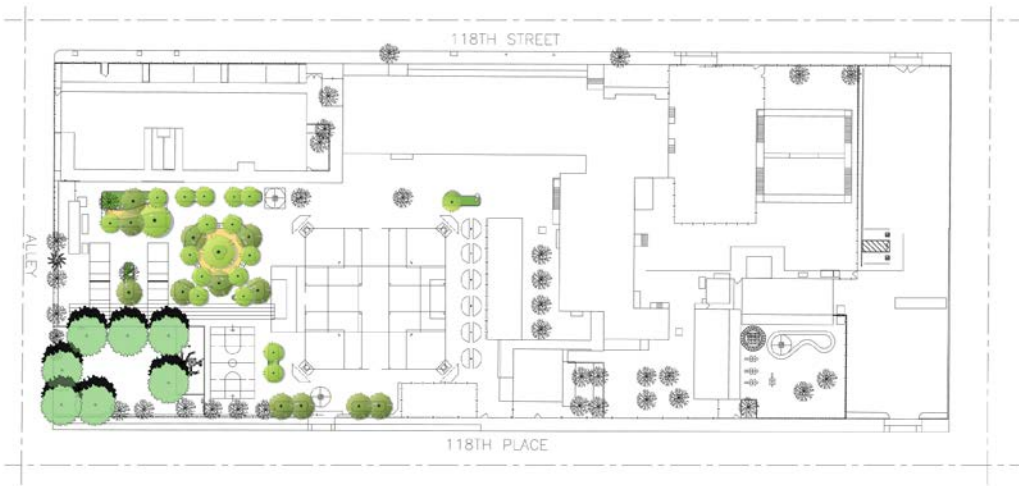
Project budget expended: \$914,315

Project budget per SF: \$152

Asphalt removed: 5,984 SF

Area of landscaping: 3,897 SF

Number of trees planted: 40



Before



After



Before



After





# Stoner Ave. Elementary School

## SCOPE:

- Replaced asphalt areas with permeable surfaces. Installed native plants, trees, and irrigation
- Developed nature-based areas with trees, boulders and decomposed granite

Construction start date: February 2024

Completion date: October 2024

Board District: 4

Project area size: 9,713 SF

Project budget expended: \$905,617

Project budget per SF: \$93

Paving removed: 9,713 SF

Number of trees planted: 15

Area of landscaping: 9,713 SF



Before



After



Before



After





# Griffith Joyner Elementary School

## SCOPE:

- Replaced asphalt areas with permeable surfaces. Installed native plants, trees, grass field, and irrigation
- Developed nature-based areas with trees, boulders and decomposed granite

Construction start date: February 2024

Completion date: October 2024

Board District: 7

Project area size: 13,081 SF

Project budget expended: \$954,987

Project budget per SF: \$73

Paving removed: 13,081 SF

Number of trees planted: 10

Area of landscaping: 3,551 SF

Area of turf: 8,903 SF



Before



After



Before



After







# Coldwater Canyon Elementary School

## SCOPE:

- Replaced asphalt areas with permeable surfaces. Installed native plants, trees, and irrigation
- Developed nature-based areas with trees, boulders and decomposed granite

Construction start date: February 2024

Completion date: December 2024

Board District: 6

Project area size: 3,984 SF

Project budget expended: \$636,807

Project budget per SF: \$160

Paving removed: 3,984 SF

Number of trees planted: 7

Area of landscaping: 3,984 SF



Before



After



After



After





# Russell Elementary School

## SCOPE:

- Replaced asphalt areas with permeable surfaces. Installed native plants, trees, grass field with shade trees, and irrigation
- Developed nature-based areas with trees, boulders and decomposed granite

Construction start date: February 2024

Completion date: October 2024

Board District:

Project area size: 17,514 SF

Project budget expended: \$1,123,442

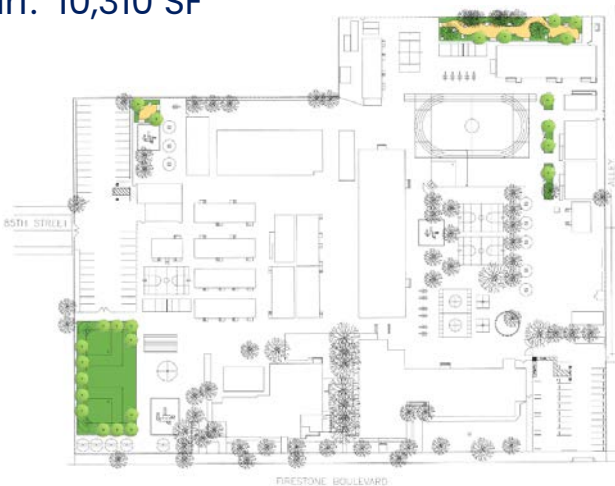
Project budget per SF: \$64

Paving removed: 17,514 SF

Number of trees planted: 22

Area of landscaping: 3,840 SF

Area of turf: 10,310 SF



Before



After



Before



After





# Belvedere Elementary School

## SCOPE:

- Replaced asphalt areas with permeable surfaces. Installed native plants, trees, and irrigation
- Developed nature-based areas with trees, boulders and decomposed granite

Construction start date: February 2024

Completion date: June 2025

Board District: 2

Project area size: 10,861 SF

Project budget expended: \$1,272,694

Project budget per SF: \$117

Paving removed: 10,861 SF

Number of trees planted: 34

Area of landscaping: 10,861 SF



Before



After



Before



After





# Lankershim Elementary School

## SCOPE:

- Replaced asphalt areas with permeable surfaces. Installed native plants, trees, grass field with shade trees, and irrigation
- Developed nature-based areas with trees, boulders and decomposed granite

Construction start date: January 2025

Completion date: July 2025

Board District: 6

Project area size: 23,810

Project budget expended: \$1,836,806

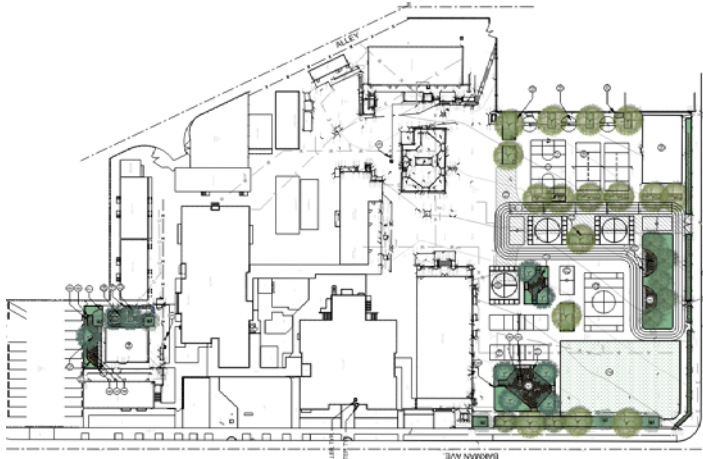
Project budget per SF: \$77

Paving removed: 23,810 SF

Number of trees planted: 31

Area of landscaping: 2,660 SF

Area of turf: 9,020 SF



Before



After



Before



After





# Projects in Constuction



Breed ES ELOP project in construction

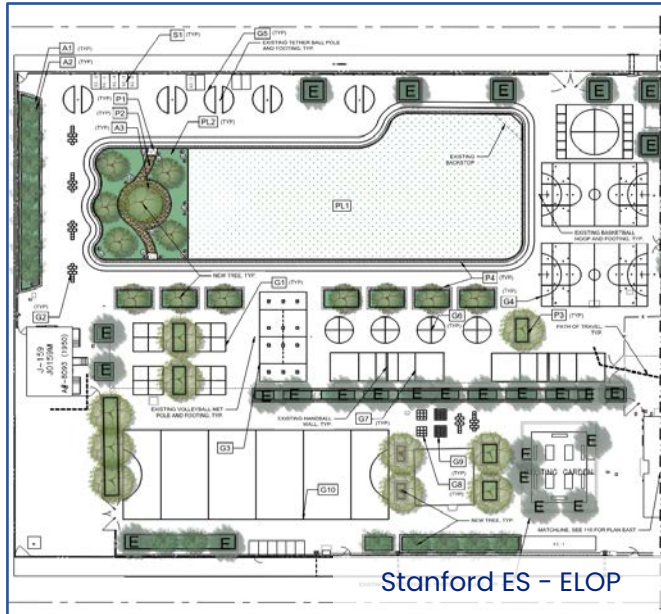
## **ELOP Greening Projects in Construction with Estimated Completion Dates**

- Manhattan ES (BD 1) – Q4 2025
- La Salle ES (BD 1) – Q4 2025
- Woodcrest ES (BD 1) – Q4 2025
- Breed ES (BD 2) – Q4 2025
- Evergreen ES (BD 2) – Q4 2025
- Lorena ES (BD 2) – Q4 2025
- Norwood (BD 5) – Q4 2025
- Sunny Brae ES (BD 3) – Q4 2025
- Ford ES (BD 2) – Q1 2026
- Hobart ES (BD 5) – Q1 2026
- Los Angeles ES (BD 5) – Q4 2025





# Projects in Pre-Construction and Design



## Projects in Bid & Award with Estimated Start Dates

- 75th St. ES (BD 7) – Q4 2025
- Garden Grove ES (BD 4) – Q4 2025
- Hughes ES (BD 5) – Q4 2025
- Soto ES (BD 2) – Q4 2025
- 28th ES (BD 5) – Q1 2026
- Hoover ES (BD 5) – Q3 2026
- Stanford ES (BD 5) – Q4 2026
- 66th St. ES (BD 7) – Q4 2025
- Menlo ES (BD 1) – Q4 2025
- Alta Loma ES\* (BD 1) – Q4 2025

## Projects in Design with Estimated Start Dates

- Windsor Hills ES (BD 1) – Q1 2027

\*Projects designed by LAUSD Landscape Architecture Unit





# Thank You



Christos Chrysiliou, FAIA, LEED AP  
Chief Eco-Sustainability Officer

