



**LAUSD**  
**UNIFIED**

# **Resilient Schools: Extreme Heat Mitigation & Disaster Preparedness at LAUSD Resolution Interim Progress Update**

Board of Education Meeting  
April 21, 2026

## **The *Resilient Schools: Extreme Heat Mitigation & Disaster Preparedness* Resolution directs action in three areas:**

1. Disaster Preparedness – response to climate-driven hazards
2. Campus Infrastructure – heat mitigation upgrades and investments
3. Synthetic Turf Policy – comprehensive study to inform Board policy

### **Progress to date:**

- Strengthening heat response protocols and advancing HVAC and heat mitigation investments
- Conducting a comprehensive synthetic turf study with stakeholder engagement

### **Next milestone:**

- Synthetic turf findings and policy recommendation – Summer 2026

# Agenda

- Disaster Preparedness
- Campus Infrastructure
  - HVAC
  - Heat Mitigation
- Artificial Turf Policy
- Next Steps

# Disaster Preparedness

## Division of School Operations

# Disaster Preparedness

## *Response to climate-driven hazards to support safe school operations*

- Comprehensive planning and governance framework for preventing and responding to heat-related illnesses, including heat stroke
- Framework aligns with LAUSD Emergency Services and the Office of Environmental Health & Safety (OEHS) Heat Illness Prevention Program
  - Clear protocols
  - Defined roles
  - Site-level accountability
- District guidance (including [BUL-963.3](#))
  - Establishes standardized procedures for:
    - Prevention
    - Monitoring
    - Emergency response
  - Ongoing staff training and communication to ensure staff preparedness

# Emergency Preparedness for Extreme Heat

## *Comprehensive guidance and protocols support school sites during extreme heat events*

Resources include:

- Guidelines for Preventing Heat Stress (BUL-963.3)
- Enhanced Emergency Preparedness Protocols (BUL-101977)
- Office of Environmental Health and Safety Heat Illness Prevention Program
- LAUSD Emergency Services protocols
- Site-level planning and compliance expectations

Districtwide heat-stroke prevention and response protocol is in place

# Community Engagement

- March 10 – Parent Meeting
- March 26 – Principals Meeting
- April 8 – Teachers Meeting
- April/May – Students
- May – Labor Partners
- May – Community Organizations



**LAUSD**  
UNIFIED

# Campus Infrastructure

---

## Facilities Services Division

# Campus Infrastructure – Heat Mitigation

## Multiple strategies deployed to reduce campus heat exposure

### Tree Canopy Expansion

- 2,000+ trees planted as part of completed projects since 2023
- ~2,800 additional trees in projects underway

### Asphalt Conversion to Permeable Surfaces

- ~ 18 acres of asphalt converted
- ~ 28 acres to be converted by projects underway

### Shade Structures

- \$5.5M in recent investments
- \$40M “Shade over Play” Program

### Cooling Strategies

- Misting fans provided to all elementary schools in 2024; units available for purchase
- Water bottle fillers installed at all Early Ed, Special Ed and ES, expansion underway at secondary schools

# HVAC Upgrades and System Improvements Underway

## Efforts underway to improve cooling and air quality

### Project Delivery:

- 17 standalone HVAC upgrade projects
- 21 through classroom replacements and major modernization projects
- Prioritization criteria being refined to guide and advance future HVAC projects

### System Performance:

- New systems fully electric and use heat pump technology wherever feasible
- All systems equipped with MERV-13 filtration

### Ventilation Verification:

- Ventilation verification underway at 53 schools (*grant-funded*)
- Scheduled for completion October 2026

### Staffing:

- 135 HVAC Fitters positions
- 17 vacancies (~12% vacancy rate), recruitment ongoing

# Artificial Turf – Policy Background

## 2017 Policy Bulletin (BUL-6847.0)

- Synthetic turf fields in high-use areas are replaced in kind
- High-use areas include fields serving PE, athletics, and community use

## 2025 Resolution

- Prohibits new synthetic turf at early education centers, elementary and middle schools
- Pauses proposing new and replacement synthetic turf projects at high schools pending study completion and Board direction

## Current Work

- Comprehensive study underway to evaluate health, environmental, and operational considerations
- Findings will inform Board policy direction

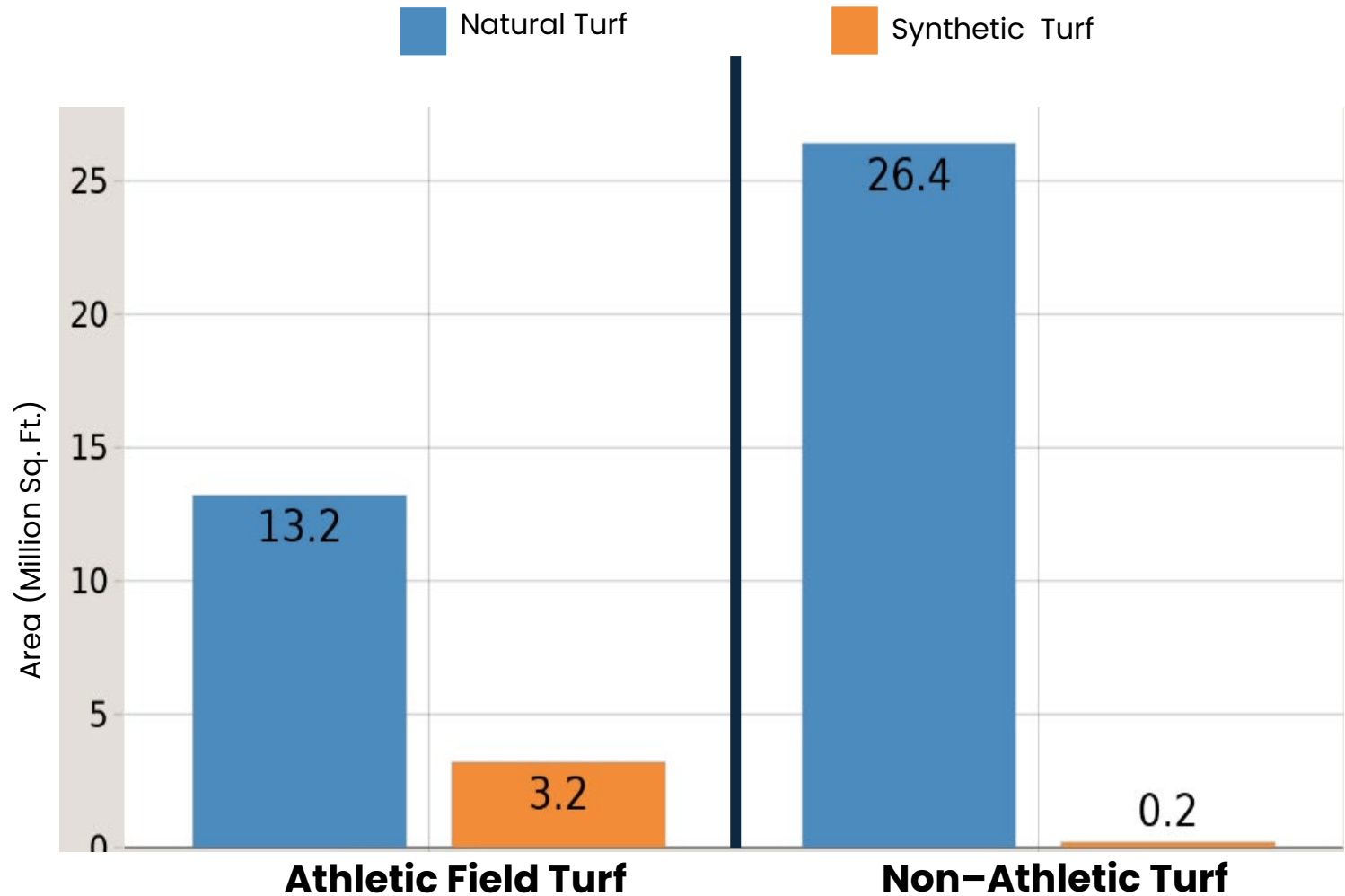
# District Turf Inventory

92% of the total turf area is natural grass

- Total athletic field area: 80% natural / 20% synthetic
- Non-athletic uses area: <1% synthetic

~80% of all high school fields are natural turf (151 fields)

~20% of all high school fields are synthetic turf (35 fields)

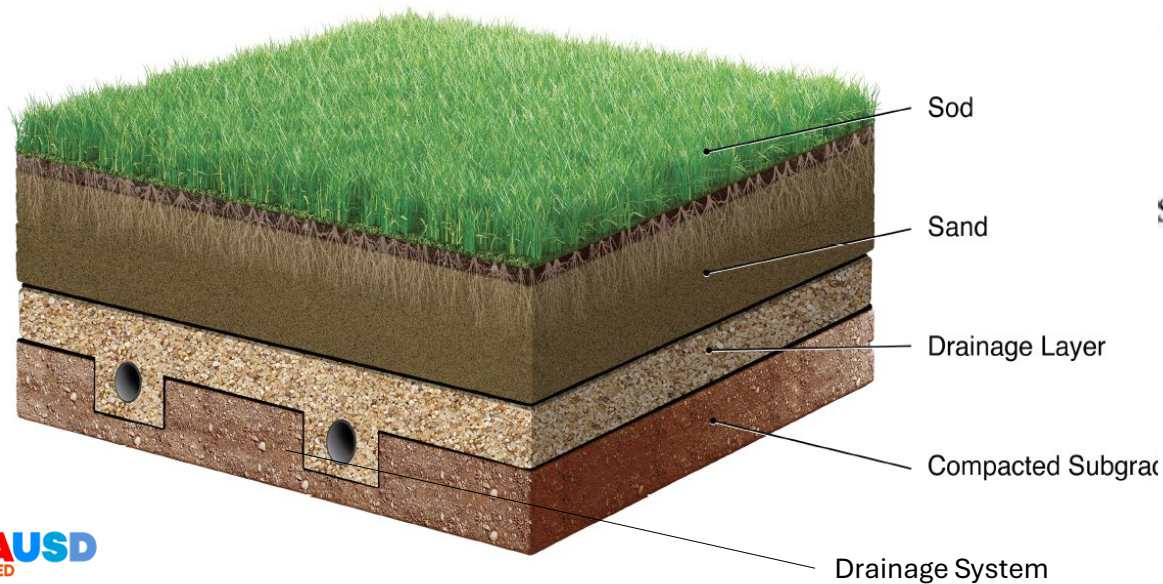


# Natural vs. Synthetic: Key Differences

## What's the difference – Natural vs. Synthetic

### Natural Turf

- Living surface; requires irrigation and routine maintenance
- Provides natural cooling and permeability
- Subject to wear and weather



### Synthetic Turf

- Synthetic fibers installed over substructure
- Lower routine maintenance and less irrigation
- Retains heat; less permeability



# Synthetic Turf Study and Engagement

## **Expert Analysis**

- Core America: Assessment of turf maintenance program and field conditions
- LPA: Comparative study of natural and synthetic turf and support for community engagement

## **Stakeholder Engagement**

- Community meetings and workshops (April–May 2026)
- Industry partner workshop

## **Policy Status**

- Policy update to follow completion of study and stakeholder input

# Natural and Synthetic Turf Study

## Key Focus Areas

1. Playability
2. Health & Safety
3. Environmental Impact/Sustainability
4. Costs & Maintenance

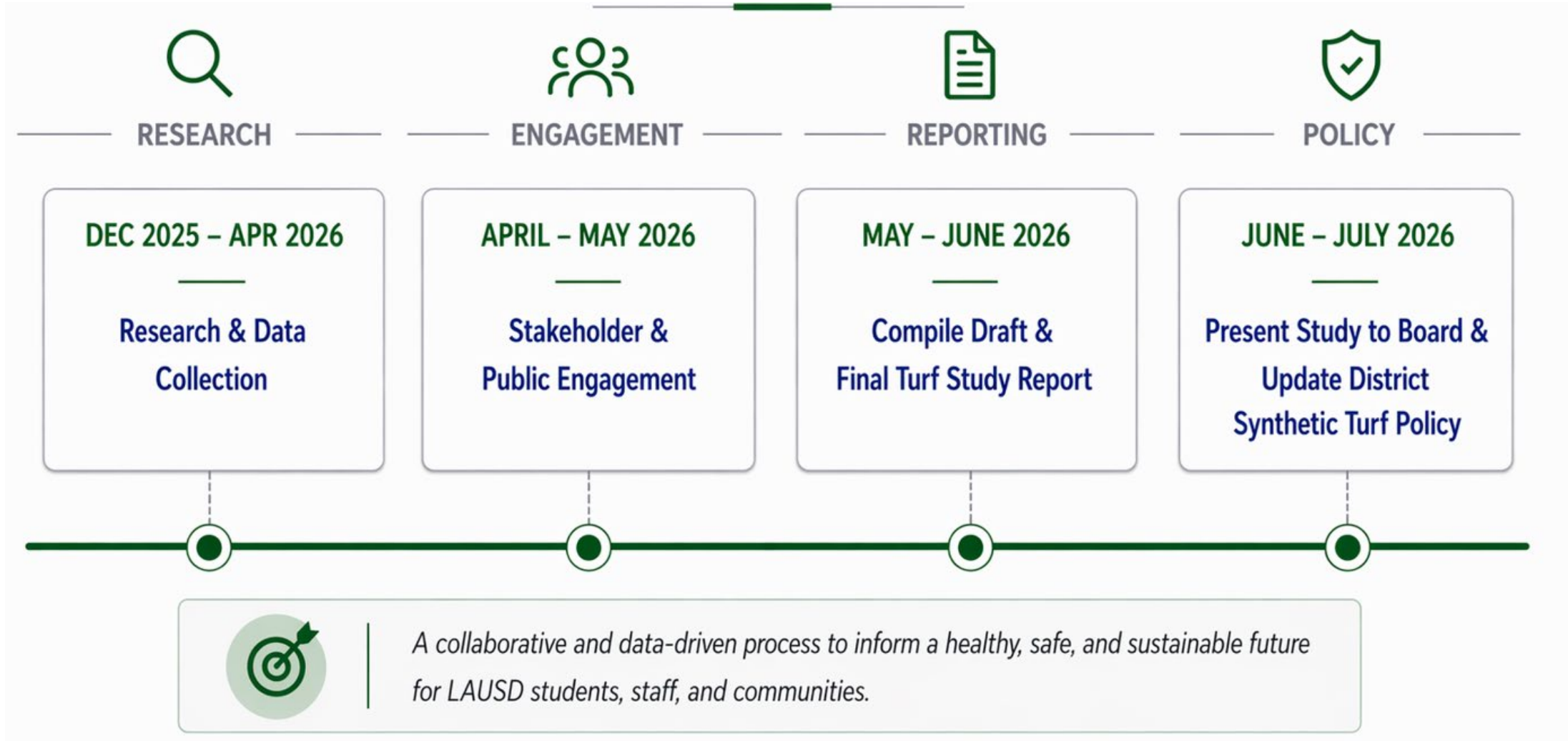
## Methodology

- Analysis of District data
- Review of academic research and industry standards
- Evaluation of performance
- Input from community and stakeholders

Findings will inform future Board policy direction



## Turf Study Process & Timeline



# Turf Study Engagement

## Stakeholder Engagement is Underway

### Community Meetings (Hybrid):

- North Region – April 28, 6:00 PM at Cleveland HS
- South Region – April 30, 6:00 PM at Dymally HS
- West Region – May 7, 6:00 PM at Los Angeles HS
- East Region – May 12, 6:00 PM at Garfield HS

### Stakeholder/Industry Workshop:

- May 4, 10:00 AM at Roybal Learning Center

### Online Districtwide Survey

- Captures input on field use, priorities, and preferences



The Los Angeles Unified School District (LAUSD) is conducting a comprehensive Turf Study of natural grass and synthetic turf athletic fields at District high schools — examining long-term costs, environmental impacts, and health and safety considerations. We invite you to help inform the LAUSD Turf Study by attending one of four community meetings and taking our short online survey.

**We want to hear from our school communities, including parents, students, and school staff.**

Input gathered through this process will be included in the final report presented to the LAUSD Board of Education.

#### What to Expect at the Meetings

- Learn about the Turf Study — what it is and why we're doing it
- Hear what the study has found about natural grass and synthetic turf
- Share your firsthand experience and perspective
- Get your questions answered

#### Meeting Details

<b>Tuesday, April 21</b> <b>6 pm</b> Garfield High School 5101 E 6th St East Los Angeles You can also join online: <a href="https://us06web.zoom.us/j/89053469989">us06web.zoom.us/j/89053469989</a>	<b>Thursday, April 23</b> <b>6 pm</b> Los Angeles High School 4650 W Olympic Blvd Los Angeles You can also join online: <a href="https://us06web.zoom.us/j/84565236239">us06web.zoom.us/j/84565236239</a>	<b>Tuesday, April 28</b> <b>6 pm</b> Cleveland High School 8140 Vanalden Ave Reseda You can also join online: <a href="https://us06web.zoom.us/j/89813989865">us06web.zoom.us/j/89813989865</a>	<b>Thursday, April 30</b> <b>6 pm</b> Dymally High School 8800 San Pedro St Los Angeles You can also join online: <a href="https://us06web.zoom.us/j/83063819083">us06web.zoom.us/j/83063819083</a>
--	---	---	---

#### Take the Online Survey



We want to hear from you — please take our short online survey. Scan the QR code or visit: [URL]

For More Information Regarding the Meetings Contact  
LAUSD Community Relations at (213) 241-1340.



# Turf Study – Outreach Plan

## Community Meeting Outreach

### Participants

- Students
- Parents/Guardians
- District Staff
- Community Members/Alumni

### Outreach Methods

- Emails and text notifications

## Stakeholder/Industry Partner Workshop Outreach

### Participants

- Environmental organizations
- Industry groups
- Sports organizations
- Public agencies and educational institutions
- Labor organizations

### Outreach Method

- Email distribution of invitation and survey

# Next Steps

---



## **Turf Study**

- Complete stakeholder engagement (April–May 2026)
- Finalize turf study report (Summer 2026)
- Present findings and policy recommendations to the Board (Summer 2026)
- Board action: adopt updated policy for synthetic turf fields



**LAUSD**  
UNIFIED

# Questions

---

