

BOARD OF EDUCATION OF THE CITY OF LOS ANGELES
Governing Board of the Los Angeles Unified School District

FAMILY AND COMMUNITY ENGAGEMENT COMMITTEE

5:00 p.m., Wednesday, June 7, 2023

333 South Beaudry Avenue
Board Room, Los Angeles, CA 90017

Committee Members

Mr. Scott Schmerelson, Chairperson

District Members

Mr. Antonio Plascencia Jr., Director, Office of
Parent & Community Services

Ms. Pia Escudero, Executive Director, Student
Health & Human Services

Mr. My T. Huynh, Chief Administrative &
Education Counsel

Student Representative

Ms. Abigail Lee, Van Nuys High School, Senior

Board Secretariat Contact

Ms. Janet Saavedra

Tel: (213) 241-7002

Email: janet.saavedra@lausd.net

External Representatives

Ms. Jessica T. Boro, Parent in BD4/Formal
LAUSD Educator

Ms. Anvi Kevany, Parliamentarian, Los Angeles
Tenth District PTSA

Ms. Yolanda McCoy, Special Project Manager,
USC Leslie & William McMorrow
Neighborhood Academic Initiative

Ms. Everil Nelson, Parent in BD7/Member of
Family Advisory Council and BSAP Family
Advisory

Ms. Lisa Salazar, General Manager, Youth
Development Department City of Los
Angeles

Ms. Jenna Schwartz, Parent; Teacher; Co-
Founder, Parents Supporting Teachers

Method for Accessing the Meeting and Providing Public Comment

There are three ways members of the public may access this Committee Meeting: (1) online ([Granicus stream](#) or [join the zoom webinar](#)), (2) by telephone by calling (888) 475-4499 and entering the Meeting ID: **847 0526 4926**, or (3) in person. Please note that due to the continued public health risks associated with COVID-19, the Board Room will be operating at reduced capacity.

The Board of Education encourages public comment on the items on this agenda and all other items related to the District. Any individual wishing to address the Board must register to speak using the Speaker Sign Up website: <https://boardmeeting.lausd.net/speakers>, and indicate whether comments will be provided over the phone or in person. Registration will open 24 hours before the meeting. A maximum of 15 speakers may sign up for general Public Comment. Each speaker will be allowed a single opportunity to provide comments to the Committee.

Speakers who do not register online to provide comments may use the following alternative methods to provide comments to Board Members:

- Email all Board Members at boardmembers@lausd.net;
- Mail comments via US Mail to 333 S. Beaudry Ave., Los Angeles, CA 90017; and
- Leave a voicemail message at (213) 443-4472, or fax (213) 241-8953. Communications received by 5 p.m. the day before the meeting will be distributed to all Board Members.

Speakers registered to provide public comments over the phone need to follow these instructions:

1. Call (888) 475-4499 and enter Meeting ID: **847 0526 4926** at the beginning of the meeting.
2. Press #, and then # again when prompted for the Participant ID.
3. Remain on hold until it is your turn to speak.
4. Call in from the same phone number entered on the Speaker Sign Up website. If you call in from a private or blocked phone number, we will be unable to identify you.
5. When you receive the signal that your phone has been removed from hold and/or unmuted, please press *6 (Star 6) to be brought into the meeting.

Please contact the Board Secretariat at 213-241-7002 if you have any questions.

AGENDA

I. Welcome and Opening Remarks..... Board Member Scott Schmerelson
Chairperson

II. Committee Presentations:

1. Your Future Begins with Adult EducationMs. Renny L. Neyra
Executive Director,
Division of Adult and Career Education

2. Academic Supports for Immigrant Students Ms. Lydia Acosta Stephens
Executive Director,
Multilingual and Multicultural Education Department

Dr. José M. Posada
Administrator Emergent Bilingual Services,
Multilingual and Multicultural Education Department

III. Public Comment

IV. Adjournment

Requests for disability related modifications or accommodations shall be made 24 hours
prior to the meeting to the Board Secretariat by calling (213) 241-7002.

Materials related to an item on this Order of Business distributed to the Board of Education are available for public inspection at
the Security Desk on the first floor of the Administrative Headquarters and at:

<https://achieve.lausd.net/site/Default.aspx?PageID=18628&DomainID=1057#calendar73805/20230607/event/65347>

Tab 1 Presentation
Your Future Begins
with Adult Education



Division of Adult and Career Education

Your Future Begins with Adult Education

Family and Community Engagement Committee Meeting
June 7, 2023

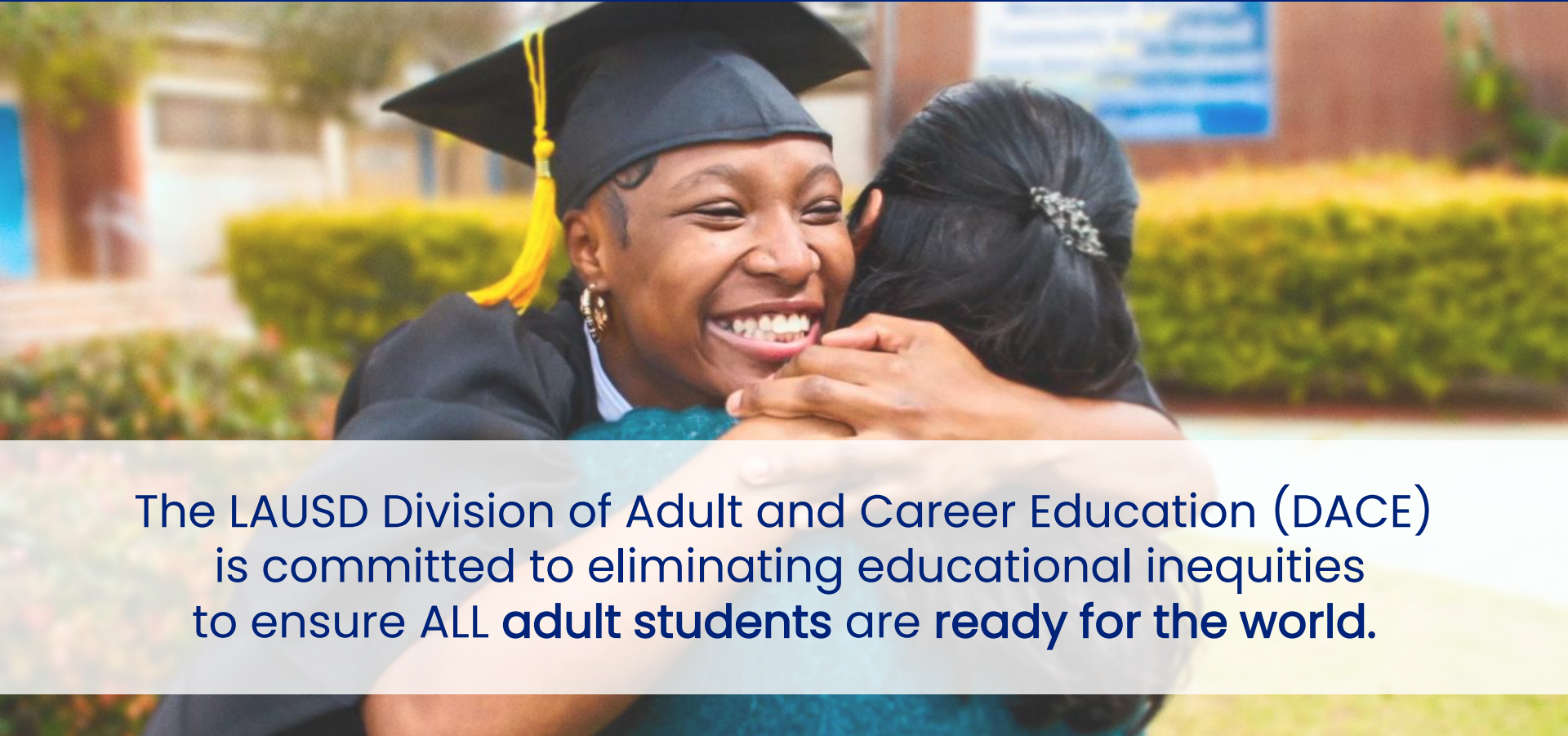


Office of Transitional Programs | Division of Adult and Career Education



Office of Transitional Programs | Division of Adult and Career Education

DACE | Core Values



The LAUSD Division of Adult and Career Education (DACE)
is committed to eliminating educational inequities
to ensure **ALL adult students are ready for the world.**



DACE | Overview

Who We Are

60,000+ Adult Students

DACE enrollment grew by 23% this year

10 Main Campuses

DACE campuses located throughout Los Angeles

Virtual Academy

First online adult school in California offered through a K-12 district

Apprenticeship Leader

LEA for the largest apprenticeship program in Southern California

50%

34,000

*ESL
Students*

24%

16,000

*CTE
Students*

26%

17,500

*Basic Skills/
HS Diploma
Students*



Office of Transitional Programs | Division of Adult and Career Education

DACE | Career Pathways

16,000+ CTE Students

CTE enrollment grew by 21% this year

15 Industry Sectors

DACE offers career pathways across all 15 industry sectors

36 Different CTE Pathways

A variety of job training opportunities with stackable certifications

CDE-Approved Curriculum

Aligned with CTE model standards

Apprenticeship Leader

LEA for the largest apprenticeship program in Southern California





Office of Transitional Programs | Division of Adult and Career Education

DACE | Career Pathways

A destination for every career pathway

LA County's Seven Targeted Industries

LAUSD Parents

K-12 CTE

DACE

Apprenticeships

High-Skill
High-Demand
Careers



DACE | Career Pathways

A career pathway for every student

- Graphic Design
- Construction
- Plumbing
- HVAC
- Accounting
- Office Technician
- Computer Operations
- Child Development
- Photovoltaics
- Electrician
- Powerline Mechanic
- Manicuring
- Cosmetology
- Esthetician
- Barbering
- Medical Office Administration
- Dental Assistant
- Physical/Sports Therapy Aide
- X-Ray Technologist
- Radiologic Technologist
- Medical Assistant
- Personal Care Aide
- Nursing Assistant/Home Health Aide
- Pharmacy Technician
- Vocational Nurse
- Culinary Arts & ServSafe
- A+ Certification/IT Support Tech.
- Networking
- Cybersecurity
- Machinist
- Welding
- Building & Grounds Worker
- Security Officer/Campus Aide Training
- Aviation
- Automotive (Diesel, Hybrid, Truck)
- Warehouse Operations/Forklift



DACE | Career Pathways

A career pathway for every student

LA County's Seven Targeted Industries

Bioscience

- Phlebotomy (Fall 23)

Construction

- Construction
- Plumbing
- Electrician
- HVAC

Leisure and Hospitality

- Culinary Arts

Health Care Services

- Medical Assistant
- Nursing Assistant/Home Aide
- Personal Care Aide
- Medical Office Administration
- Dental Assistant
- Pharmacy Technician
- Licensed Vocational Nursing
- X-Ray Technician
- Radiologic Technologist

Film & Digital Media

- Graphic Design
- Video Production

Manufacturing

- Machinist
- Welding

Trade & Logistics

- Warehouse Operations
- Forklift



DACE | Career Pathways



Health Care Services	Personal Care Aide Allied Health Pathway 80 Hours \$14-\$17	Home Health Aide Allied Health Pathway 170 Hours \$14-\$17	Nursing Assistant Allied Health Pathway 170 Hours \$17-\$25	Medical Biller Allied Health Pathway 270 Hours \$17-\$31	LVN Allied Health Pathway 1,560 Hours \$25-\$40
Construction	Construction Worker Building Pathway 540 Hours \$17-\$38	Plumber Building Pathway 360 Hours \$19-\$59	HVAC Technician Building Pathway 540 Hours \$19-\$50	Refrigeration Tech. Building Pathway 380 Hours \$19-\$50	Journey-Level Carpenter 4 Year Apprenticeship* \$24-\$48
Trade & Logistics	Package Handler Transportation Pathway 60 Hours \$14-\$19	Forklift Operator Transportation Pathway 45 Hours \$16-\$27	Commercial Driver Transportation Pathway 120 Hours \$17-\$36		
Leisure & Hospitality	Chef Assistant Food Service Pathway 360 Hours \$15-\$22	Baker Food Service Pathway 250 Hours \$15-\$22	Barista Food Service Pathway 42-Hour Union Training* \$15-\$22		
Film & Digital Media	Graphic Designer Design & Media Pathway 540 Hours \$18-\$61	Video Prod. Assist. Design & Media Pathway 270 Hours \$19-\$64	Digital Marketer Design & Media Pathway Apprenticeship Training* \$18-\$24		
Manufacturing	Welder Manufacturing Pathway 540 Hours \$15-\$29	Machinist Manufacturing Pathway 360 Hours \$17-\$36			
Bioscience	Phlebotomy Tech. Health Science Pathway 120 Hours \$17-\$30				

*Training programs marked with an asterisk and a dotted border are offered by DACE partner organizations.

DACE CTE Pathways
Align with LA County's
Seven Targeted Industries



Office of Transitional Programs | Division of Adult and Career Education

DACE | Career Pathways

A career pathway for every student

LA County's Seven Targeted Industries

Spotlight on Health Care Services

Health Care Services

Personal Care Aide

Allied Health Pathway
80 Hours
\$14-\$17

Home Health Aide

Allied Health Pathway
170 Hours
\$14-\$17

Nursing Assistant

Allied Health Pathway
170 Hours
\$17-\$25

Medical Biller

Allied Health Pathway
270 Hours
\$17-\$31

LVN

Allied Health Pathway
1,560 Hours
\$25-\$40



Office of Transitional Programs | Division of Adult and Career Education

DACE | Career Pathways

A career pathway for every student

LA County's Seven Targeted Industries

Spotlight on Construction

Construction

Construction Worker

Building Pathway

540 Hours

\$17-\$38

Plumber

Building Pathway

360 Hours

\$19-\$59

HVAC Technician

Building Pathway

540 Hours

\$19-\$50

Refrigeration Tech.

Building Pathway

380 Hours

\$19-\$50

Journey-Level Carpenter

4 Year Apprenticeship*

\$24-\$48



DACE | Career Pathways

A career pathway for every student

21st Century Career Pathways



Current

- Electric/Hybrid Vehicle Maintenance
- Photovoltaics/Solar Thermal
- Networking/Cybersecurity Operations

Future

- Expand Hybrid Vehicle and Photovoltaic Pathways by adding new sites and courses.

Hybrid/Electric
Service Tech.
690 Hours
\$15-\$37

Photovoltaic
Installer
360 Hours
\$18-\$31

Cybersecurity
Technician
210 Hours
\$37-\$85



Office of Transitional Programs | Division of Adult and Career Education

DACE | Career Pathways

LAUSD Career Pathways: Join Our Family



Train for LAUSD Careers

DACE offers specifically designed training programs

Multiple Career Pathways Offered

Training programs offered include the following:

- Campus Aide
- Food Service Worker
- IT Support Technician
- Auto Mechanic
- Office Technician
- Custodian
- Plant Manager



Office of Transitional Programs | Division of Adult and Career Education

DACE | Career Pathways

Pre-Apprenticeship: Start the Journey

Equity-Driven Partnership

With LA OC Building and Construction Trades Council

Nationally Recognized Program

State-Approved Multi-Craft Core Curriculum (MC3)

Offered at Four DACE Sites Currently

Adding Harbor Occupational Center program in fall 2023

Onramp to Apprenticeship Programs

Students receive apprenticeship placement support





DACE | Career Pathways

Apprenticeship: Earn + Learn



35 Registered Apprenticeship Programs

DACE is the Local Educational Agency (LEA) and fiscal agent

8,700+ Apprentices (Year to Date)

Pathway to high-wage careers in union jobs

- Brick Mason's Training Trust
- S. CA Elevator Constructors, Local 18
- N. CA Elevator Industry JATC
- Plumbers/Pipefitters Apprenticeship
- S. CA Sheet Metal Workers, Local 105
- Joint Air Conditioning & Refrigeration
- Central Valley Roofers
- Northern California Painters, DC 16
- Electrical Workers, SLO JATC
- Finishing Trades Institute, DC 36
- S. CA NMTA Training Center
- Union Roofers Apprenticeship
- Construction Teamsters
- LA County Barber & Cosmetology
- Tradeshow/Sign Craft, Local 831
- Hospitality Training Academy



Office of Transitional Programs | Division of Adult and Career Education

DACE | Career Pathways

Integrated Education & Training (IET)

Increasing Access to Career Training

Nationally recognized program for adult English learners

ESL and CTE in One Classroom

ESL teacher and CTE teacher co-teach simultaneously

Accelerating Progress to Employment

Allows students to reach goals faster

An IET Program for Every Student

Offered in a variety of industry sectors





Office of Transitional Programs | Division of Adult and Career Education

DACE | Options for Families

Family Academy: Equity Pathways

A Family-Focused Collaboration

With Student, Family, and Community Engagement Office

Designed to Build Parent Networks

Courses provide parents with space to learn and connect

Crafted by Subject Matter Experts

Content is created by LAUSD specialists

4 Equity-Driven Pathways

Each pathway is designed to engage and empower families





Office of Transitional Programs | Division of Adult and Career Education

DACE | Options for Families

Family Academy: Equity Pathways

Four Pathways | Seven Online Sessions

Families of the Youngest Learners

Families of Black and African American Learners

Families of Multilingual Learners

Families of Learners with Exceptional Need

bit.ly/LAUSDequitypathways





DACE | Options for Families

DACE Programs: Something for Everyone



DACE Offers a Variety of Programs

In addition to career-focused programs, DACE offers:

- English as a Second Language
- ESL Citizenship
- Basic Education (Math, Reading, Writing)
- High School Diploma
- High School Equivalency Prep.
- Spanish for the Workplace
- Computer Essentials
- Customer Service Essentials
- American Sign Language (Coming Soon)



Office of Transitional Programs | Division of Adult and Career Education

DACE | Options for Families

Spreading the Word

HOW WE WILL DO IT TOGETHER

Offer an open invitation to students, LAUSD staff, local employers, and workforce development agencies to partner with DACE.

CONTACT US TODAY

(213) 241-3150

LAUSDAdultEd.org



**Your Future Begins With
Adult Education
See You In School!**



Your Future Begins With Adult Education

Learn English Earn Your Diploma Train for a Career Tuition-Free

See You In School!

Tab 2 Presentation
Academic Supports for
Immigrant Students

International Newcomer Students Programs and Supports



**Ready for the World
In Limitless Ways!**



Office of Immigrant Affairs County of Los Angeles

U.S. Customs and Border Patrol Data

California

Top 3 Countries of Immigrant Origen's

Mexico, Russia, Ecuador

Demographics at the Southwest Border

Single Adults	Family Units	Unaccompanied Minors	Accompanied Minors
972,493 68%	376,245 26%	81,474 6%	1,752 0.12%

Data Source: U.S. Customs and Border Patrol 5/22/23



Emergent Bilinguals Typology Data

2022–2023 ELtMR Report

Regions	CalPads Student Counts (Official) (91,854)											
	U.S. Born (0-3.9 years) + Other ELs		International Newcomer (0-3 years)		PLTEL (4-5.9 years)		LTEL (6+ years)		EL SWD		Total Counts and % By Regions	
	Currently Enrolled	%	Currently Enrolled	%	Currently Enrolled	%	Currently Enrolled	%	Currently Enrolled	%		
East	11,936	31	4,500	24	5,052	30	5,394	31	5,190	31	26,882	29 %
North	11,724	30	6,567	35	4,849	29	4,715	27	5,024	30	27,855	31 %
South	9,068	23	3975	21	4,026	24	3,397	20	3,181	19	20,466	22 %
West	4,824	12	2,800	15	1,967	12	2,117	12	2,338	14	11,708	13 %
PLAS	1,206	3	741	4	598	4	1,062	6	591	3	3,607	4 %
XS	336	1	112	1	207	1	682	4	472	3	1,337	1 %
Totals	39,094	43	18,695	20	16,699	18	17,367	19	16,796	18	91,854	100%

Emergent Bilinguals formally known as English Learners



International Newcomer Data Trends

School Level	Grade	Currently Enrolled
Elementary 9,162 56%	TE	284
	TK	558
	Kinder	1,728
	01	1,956
	02	1,562
	03	1,062
	04	1,033
	05	992
Middle 2,401 14%	06	773
	07	830
	08	796
High 5,002 30%	09	2,766
	10	1,793
	11	344
	12	62
	Total	16,539

Board District	0-1 Year	1.1-2 Years	2.1-3 Years	Total
1	983	825	211	2,019
2	1,261	905	260	2,426
3	1,289	827	248	2,364
4	754	428	103	1,285
5	1,439	1,189	301	2,929
6	1,721	1,218	330	3,269
7	1,108	916	223	2,247
Total	8,555	6,308	1,676	16,539

Data Source: MMED Focus Dashboard 5/31/23



Multilingual Multicultural Academic Language Instructional Coaches(MMALC)

Region	Priority Schools	Other Schools	Total # Schools
EAST	24	40	64
NORTH	14	50	64
SOUTH	53	14	67
WEST	9	15	24
Total	100	119	219

The K-12 MMALC provides support to schools in building teacher capacity and is designed to provide direct, supplemental services for multilingual learners for at least 60% of the assignment.

- 192 total Coach positions serving 227 schools throughout District
- Enrichment and acceleration for PLTEL, LTEL, and international newcomers



International Newcomer Immigrant Supports and Services



Personalized Support Elementary

- Multilingual Academic Language Coaches
- MMED/SPED
- Progress Monitoring
- Instructional Resources & Strategies
- Digital Lessons Resources

Personalized Support Secondary

- Student Clubs
- Academic Coaches
- Academic Counselors
- Internationals Academies
- Leadership Conference
- Summer Program
- Digital Lessons Resources



International Leadership Conference

"Turning Dreams Into Reality"

Leadership Conference:

- 600+ Students, families and staff
- Held yearly on the third Saturday in January

Selection of workshops:

- Legal clinic
- Graduation action plan
- Personal and career goal setting
- Peer-to-peer conversations

MULTILINGUAL MULTICULTURAL
EDUCATION DEPARTMENT

3RD ANNUAL
GRADES 6-12
INTERNATIONAL
NEWCOMER STUDENT
LEADERSHIP CONFERENCE

EMPOWERING INTERNATIONAL NEWCOMER STUDENTS

SATURDAY, JANUARY 21, 2023

8:00AM - 12:30PM

EAST LOS ANGELES COLLEGE
1801 AVENIDA CERRA CHAVEZ, MONTEREY PARK, CA 91754

AT A GLANCE AGENDA:

GENERAL SESSION	8:00AM - 10:00AM
WORKSHOPS	10:00AM - 12:00PM
CLOSING SESSION	12:00PM - 12:30PM

BOX LUNCH WILL BE PROVIDED

TURNING DREAMS INTO REALITY

OVERVIEW:

- WORKSHOPS: LEADERSHIP, SELF-ADVOCACY, AND MANY MORE
- COMMUNITY SUPPORTS AND OPPORTUNITIES FOR ACHIEVING POSTSECONDARY EDUCATION
- COMMUNITY LEADERS AND INTERNATIONAL NEWCOMER STUDENTS PANEL
- TRANSPORTATION PROVIDED AT SELECTED SCHOOL SITES

REGISTRATION LINK:
<https://bit.ly/INTERNATIONALCONFERENCE22-23>



International Newcomer Summer Enrichment Program

Summer Enrichment Program:

- June 26 thru July 25, 2023
- 2,000 Student Capacity for 9-12 grades
- 41 District-wide campuses

Program Focus:

- Leadership skills and self-advocacy
- Guest and student speaker panels
- College and career readiness skills
- Receive B credit (A-G)
- Enrichment field trips



Multilingual Multicultural Education Department

2023 INTERNATIONAL NEWCOMER ENRICHMENT SUMMER PROGRAM

High School
International Newcomer Students
Grades 9 - 12

June 26, 2023 - July 25, 2023
Monday - Friday
8:30am - 2:00pm

STUDENT REGISTRATION:



<https://bit.ly/2023INESP>

QUESTIONS?
Cynthia Ramirez-Roussel
TK-12 English Learner Instructional Specialist
crr0096@lausd.net

PARTICIPANTS WILL:

- enroll at a selected high school
- receive English Language Development (ELD)
- learn leadership & self-advocacy skills
- learn skills to become college & career ready
- understand how to be successful in A-G courses
- participate in enrichment field trips

AS?
Roussel
Learner Instructional Specialist
crr0096@lausd.net



Multilingual Multicultural Education Department

PROGRAMA DE ENRIQUECIMIENTO DE VERANO PARA ESTUDIANTES RECIÉN LLEGADOS

Para estudiantes de la preparatoria en los grados 9-12

26 de junio de 2023 - 25 de julio 25 de 2023
Lunes-Viernes
8:30am - 2:00pm

IN ESTUDIANTIL:



<https://bit.ly/2023INESP>

LOS PARTICIPANTES:

- Inscribirse en una escuela secundaria seleccionada
- Recibir desarrollo del idioma Inglés (ELD)
- Aprender habilidades de liderazgo y auto abogacía
- Aprender habilidades para prepararse para la universidad y una profesión/carrera
- Entender como tener éxito en los cursos A-G
- Participar en excursiones de enriquecimiento

AS?
Roussel
Learner Instructional Specialist
crr0096@lausd.net



Deyli Huinil's Poem

Los Angeles High School





Migrant Education Program

Year	Student Count
2019-2020	1,384
2020-2021	1,502
2021-2022	1,601
2022-2023	1,434
Data Source: WestEd Migrant Student Information Network	

Migrant Education:

A child is considered "migratory" if the parent or guardian is a migratory worker in the agricultural, dairy, lumber, or fishing industries and whose family has moved during the past three years.

Services Include:

- Summer school (Pre K-8)
- After-school programs (Pre K-12)
- Saturday School (Pre K-12)
- Case management (9-12)
- Family Workshops
- Family Outreach



Refugee Education Support Program

Year	Student Count
2021-2022	26
2022-2023	119
Data Source: MiSiS self I.D. enhancement forthcoming	

Refugee Education Program:

Provides assistance to eligible school-age students who have been in the United States five years or less with improving their academic performance and social adjustment, civic engagement, and community collaboration.

Services Include:

- Summer school (Pre K-8)
- After-school programs (Pre K-12)
- Saturday School (Pre K-12)
- Case management (K-12)
- Parent classes/support
- Support families with referrals to community agencies



District-wide Collaboration and Supports

District Supports:

- Student Health and Human Services
 - Enrollment Support
 - SEPA Center (enrollment supports, health screening, transcript evaluation)
 - District policies supporting enrollment
 - Health needs
 - Wellness Centers & referrals
- Academic Supports
 - MMED
 - International Newcomer Academies, coaches, & counselors
 - Summer Programs
 - MEP / Refugee
 - After school
 - Saturday
 - Summer School

• Community and County of LA Partners

- City of Los Angeles Task Force
- Los Angeles County Office of Education
- California Department of Social Services CalNEW Grant
- UCLA at RFK Legal Clinic Support
- California Community Foundation
- Great Public Schools Now
- CARECEN Legal services supports
- CHIRLA Legal Clinic



District-wide Collaboration and Supports





Thank you...