



Division of Adult and Career Education

LA's Engine for Economic Transformation

Board of Education Meeting

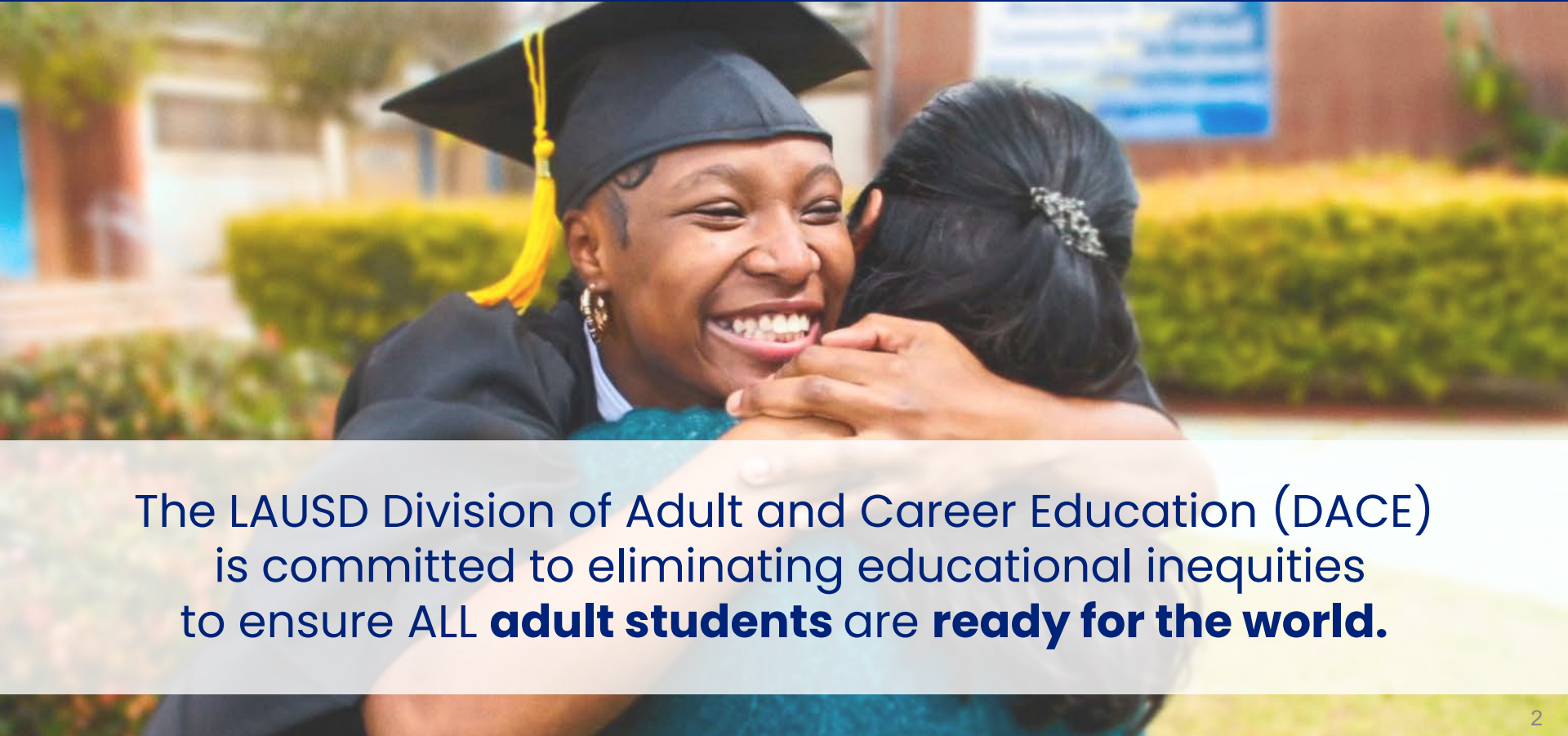
May 23, 2023



Office of Transitional Programs | Division of Adult and Career Education



Division of Adult and Career Education



The LAUSD Division of Adult and Career Education (DACE) is committed to eliminating educational inequities to ensure ALL **adult students** are **ready for the world**.



LAUSD | Career Technical Education



College + Career

DACE **Career Technical Education (CTE)** provides adult learners with industry aligned and academically rigorous instruction leading to job entry or further career training via college or skilled trades apprenticeship programs.

LAUSD's Career-Focused Programs

K-12 CTE & Linked Learning

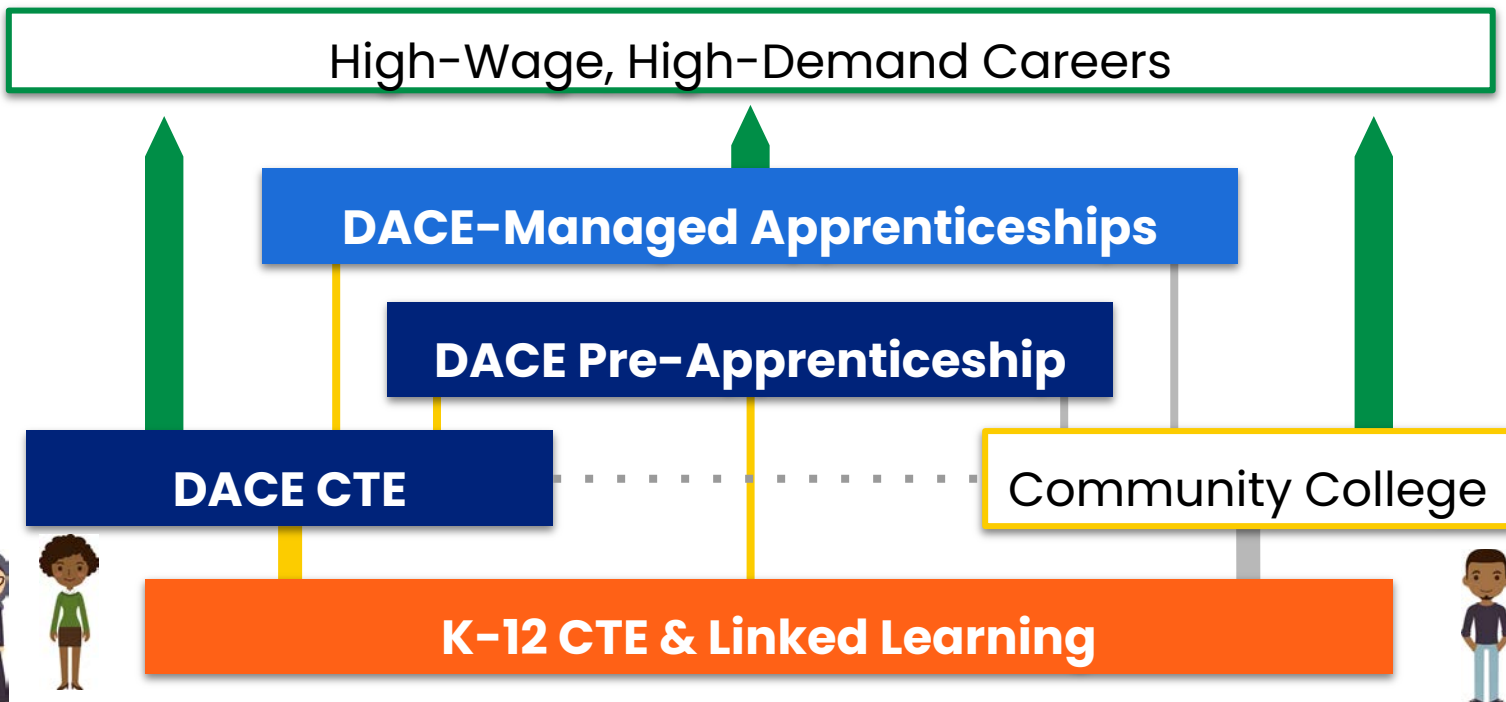
DACE CTE & Pre-Apprenticeship

DACE-Managed Apprenticeships



LAUSD | Career Technical Education

LAUSD Strategic Plan Priority 1D: Champion **multiple pathways** for college and career readiness for all students.





LAUSD Strategic Plan | Alignment

PILLAR 1

Academic Excellence

Rigorous and Responsive Academic
Programs to Achieve Excellence for All

PRIORITY 1D

College and Career Readiness

Strategy

Expand opportunities to
participate in Career and
Technical Education



32%

Annual increase in the
number of DACE
students who complete
a CTE sequence.

22-23 Target = 10% increase



LAUSD Strategic Plan | Alignment

PILLAR 3

Engagement and Collaboration

Authentic Engagement to
Leverage the Power of Our
Families, Communities, and
Educational Partners

PRIORITY **3A**

Strong Relationships

Strategy

Expand community schools
to identify and build on
community assets and
relationships



40

DACE classes offered at
14 community schools.

22-23 Target = 10 Classes



LAUSD Strategic Plan | Alignment

PILLAR 4

Operational Effectiveness

Innovative Operations to Ensure Lasting Organizational Success

PRIORITY **4D** **District of Choice**

Strategy

Expand learning options, such as virtual and independent learning, based on student needs



1,070

Students enrolled in the new Adult Education Virtual Academy.

22-23 Target = 500 Students



LAUSD Strategic Plan | Alignment

PILLAR 5

Investing in Staff

Development and Uplifting
of Talented Staff to Serve All
Students

PRIORITY **5A**

A Diverse Workforce

Strategy

Create career pathways for students to transition to District careers, including high demand areas such as teaching and nursing



1,385

Students completed
workforce certifications
to enter or retain LAUSD
employment.

22-23 Target = 500 Students



DACE | Career Technical Education

16,000+ CTE Students

CTE enrollment grew by 21% this year

15 Industry Sectors

DACE offers career pathways across all 15 industry sectors

36 Different CTE Sequences

A variety of job training opportunities with stackable certifications

CDE-Approved Curriculum

Aligned with CTE model standards

Apprenticeship Leader

LEA for the largest apprenticeship program in Southern California





DACE | Career Technical Education

A career pathway for every student

- Graphic Design
- Construction
- Plumbing
- HVAC
- Accounting
- Office Technician
- Computer Operations
- Child Development
- Photovoltaics
- Electrician
- Powerline Mechanic
- Manicuring
- Cosmetology
- Esthetician
- Barbering
- Medical Office Administration
- Dental Assistant
- Physical/Sports Therapy Aide
- X-Ray Technologist
- Radiologic Technologist
- Medical Assistant
- Personal Care Aide
- Nursing Assistant/Home Health Aide
- Pharmacy Technician
- Vocational Nurse
- Culinary Arts & ServSafe
- A+ Certification/IT Support Tech.
- Networking
- Cybersecurity
- Machinist
- Welding
- Building & Grounds Worker
- Security Officer/Campus Aide Training
- Aviation
- Automotive (Diesel, Hybrid, Truck)
- Warehouse Operations/Forklift



DACE | Career Technical Education

A **career pathway** for every student

LA County's Seven Targeted Industries

Bioscience

- Phlebotomy (Fall 23)

Construction

- Construction
- Plumbing
- Electrician
- HVAC

Leisure and Hospitality

- Culinary Arts

Health Care Services

- Medical Assistant
- Nursing Assistant/Home Aide
- Personal Care Aide
- Medical Office Administration
- Dental Assistant
- Pharmacy Technician
- Licensed Vocational Nursing
- X-Ray Technician
- Radiologic Technologist

Film & Digital Media

- Graphic Design
- Video Production

Manufacturing

- Machinist
- Welding

Trade & Logistics

- Warehouse Operations
- Forklift



DACE | Career Technical Education

A career pathway for every student

LA County's Seven Targeted Industries



Spotlight on Trade & Logistics

Current

- Aviation Program (Van Nuys Airport)
- Warehouse Operations
- Forklift Certification
- Truck Driver Commercial License Prep.

Future

- Port of LA Training Partnership
- LAX Training Partnership



DACE | Career Technical Education

A **career pathway** for every student

LA County's Seven Targeted Industries



Spotlight on **Film & Digital Media**

Current

- Graphic Design Pathway
- Video Production Pathway

Future

- Digital Marketing Pre-Apprenticeship
 - *High Road Training Partnership Grant*
- Expand Entertainment Trades Pathways



DACE | Career Technical Education



Health Care Services	Personal Care Aide Allied Health Pathway 80 Hours \$14-\$17	Home Health Aide Allied Health Pathway 170 Hours \$14-\$17	Nursing Assistant Allied Health Pathway 170 Hours \$17-\$25	Medical Biller Allied Health Pathway 270 Hours \$17-\$31	LVN Allied Health Pathway 1,560 Hours \$25-\$40
Construction	Construction Worker Building Pathway 540 Hours \$17-\$38	Plumber Building Pathway 360 Hours \$19-\$59	HVAC Technician Building Pathway 540 Hours \$19-\$50	Refrigeration Tech. Building Pathway 380 Hours \$19-\$50	Journey-Level Carpenter 4 Year Apprenticeship* \$24-\$48
Trade & Logistics	Package Handler Transportation Pathway 60 Hours \$14-\$19	Forklift Operator Transportation Pathway 45 Hours \$16-\$27	Commercial Driver Transportation Pathway 120 Hours \$17-\$36		
Leisure & Hospitality	Chef Assistant Food Service Pathway 360 Hours \$15-\$22	Baker Food Service Pathway 250 Hours \$15-\$22	Barista Food Service Pathway 42-Hour Union Training* \$15-\$22		
Film & Digital Media	Graphic Designer Design & Media Pathway 540 Hours \$18-\$61	Video Prod. Assist. Design & Media Pathway 270 Hours \$19-\$64	Digital Marketer Design & Media Pathway Apprenticeship Training* \$18-\$24		
Manufacturing	Welder Manufacturing Pathway 540 Hours \$15-\$29	Machinist Manufacturing Pathway 360 Hours \$17-\$36			
Bioscience	Phlebotomy Tech. Health Science Pathway 120 Hours \$17-\$30				

*Training programs marked with an asterisk and a dotted border are offered by DACE partner organizations.

DACE CTE Pathways
Align with LA County's
Seven Targeted Industries



DACE | Career Technical Education

A **career pathway** for every student

LA County's Seven Targeted Industries

Spotlight on **Health Care Services**

Health Care Services

Personal Care Aide

Allied Health Pathway
80 Hours
\$14-\$17

Home Health Aide

Allied Health Pathway
170 Hours
\$14-\$17

Nursing Assistant

Allied Health Pathway
170 Hours
\$17-\$25

Medical Biller

Allied Health Pathway
270 Hours
\$17-\$31

LVN

Allied Health Pathway
1,560 Hours
\$25-\$40



DACE | Career Technical Education

A **career pathway** for every student

LA County's Seven Targeted Industries

Spotlight on **Construction**

Construction

Construction Worker

Building Pathway

540 Hours

\$17-\$38

Plumber

Building Pathway

360 Hours

\$19-\$59

HVAC Technician

Building Pathway

540 Hours

\$19-\$50

Refrigeration Tech.

Building Pathway

380 Hours

\$19-\$50

Journey-Level Carpenter

4 Year Apprenticeship*

\$24-\$48



DACE | Career Technical Education

A career pathway for every student

21st Century Career Pathways



Current

- Electric/Hybrid Vehicle Maintenance
- Photovoltaics/Solar Thermal
- Networking/Cybersecurity Operations

Future

- Expand Hybrid Vehicle and Photovoltaic Pathways by adding new sites and courses.

Hybrid/Electric
Service Tech.
690 Hours
\$17-\$37

Photovoltaic
Installer
360 Hours
\$18-\$31

Cybersecurity
Technician
210 Hours
\$37-\$85



DACE | Career Technical Education

Pre-Apprenticeship: Start the Journey

Equity-Driven Partnership

With LA OC Building and Construction Trades Council

Nationally Recognized Program

State-Approved Multi-Craft Core Curriculum (MC3)

Currently Offered at Four DACE Sites

Adding Harbor Occupational Center program in fall 2023

Onramp to Apprenticeship Programs

Students receive apprenticeship placement support





DACE | Career Technical Education

Apprenticeship: Earn + Learn



35 Registered Apprenticeship Programs

DACE is the Local Educational Agency (LEA) and fiscal agent

8,700+ Apprentices (Year to Date)

Pathway to high-wage careers in union jobs

- Brick Mason's Training Trust
- S. CA Elevator Constructors, Local 18
- N. CA Elevator Industry JATC
- Plumbers/Pipefitters Apprenticeship
- S. CA Sheet Metal Workers, Local 105
- Joint Air Conditioning & Refrigeration
- Central Valley Roofers
- Northern California Painters, DC 16
- Electrical Workers, SLO JATC
- Finishing Trades Institute, DC 36
- S. CA NMTA Training Center
- Union Roofers Apprenticeship
- Construction Teamsters
- LA County Barber & Cosmetology
- Tradeshow/Sign Craft, Local 831
- Hospitality Training Academy



DACE | Career Technical Education

A **destination** for every career pathway

LA County's Seven Targeted Industries





DACE | Career Technical Education

A **destination** for every career pathway



HOW WE WILL DO IT

Expand DACE workforce preparation options to secondary students:

- *Create Career Empowerment Academies building on K-12 CTE*
- *Create skilled trades apprenticeship pathways for secondary students by leading a regional awareness campaign and by adding additional pre-apprenticeship programs (Multi-Craft Core Curriculum at Harbor Occupational Center)*
- *Establish an annual LAUSD CTE expo highlighting career pathways for secondary students*



DACE | Career Technical Education

A **destination** for every career pathway



HOW WE WILL DO IT

Create new CTE pathway programs leading to careers within LAUSD:

- *Current: Buildings and Grounds Workers, IT Support Tech., Campus Aide, Auto Mechanic*
- *Future: Special Education Paraprofessional, Office Technician, LVN, Early Education Aide*

Create District-sponsored apprenticeship programs leading to skilled trade careers within LAUSD.



DACE | Career Technical Education

A **destination** for every career pathway



HOW WE WILL DO IT

Prepare Los Angeles' future-ready workforce by aligning CTE curriculum with green economy jobs that support state and federal infrastructure investments:

- *Partner with new and emerging technology companies to develop curriculum and training programs*
- *Expand electric/hybrid vehicle auto technician program*



DACE | Career Technical Education

A **destination** for every career pathway



HOW WE WILL DO IT

Develop customized training and upskilling programs for employer partners:

- *Port of Los Angeles (New Training Facility)*
- *Automobile Association of America (AAA)*
- *American Honda Motor Corp.*
- *LA County Metro Transportation Authority*

Provide education and career training opportunities at all LAUSD community schools.



DACE | Career Technical Education

At the table, **driving the discussion**

KEY PARTNERS

Workforce Development

- *LA Chamber of Commerce*
- *Economic Workforce and Development Dept.*
- *YouthSource Navigator Program*
- *LA City Workforce Development Board*
- *LA County Economic Development Corporation*
- *LA OC Building and Construction Trades Council*





DACE | Career Technical Education

At the table, **leading the work**

KEY PARTNERS

Equity-Driven Programs

- *Anti-Recidivism Coalition*
- *Alliance for Community Empowerment*
- *Worker Education and Resource Center*
- *Homeboy Industries*
- *LA County Metropolitan Transit Authority*
- *Para Los Niños*





DACE | Career Technical Education

Redefining CTE

HOW WE WILL DO IT

- Build brand trust and awareness by leveraging LAUSD's new branding look and feel.
- Integrate DACE messaging across all communication platforms.
- Work with partner agencies to recruit industry professionals for CTE teaching positions.



**Your Future Begins With
Adult Education**

Train for a Career Tuition-Free
See **You** In School!

Enroll Now (213) 241-3150 LAUSDAdultEd.org



**Su futuro comienza con la
educación para adultos**

Capacítate para una carrera sin pagar matrícula
¡Nos **vemos** en la escuela!

Inscríbase ahora (213) 241-3150 LAUSDAdultEd.org





DACE | Career Technical Education

Redefining CTE

HOW WE WILL DO IT TOGETHER

- Offer an open invitation to students, LAUSD staff, local employers, and workforce development agencies to partner with DACE in this work.

CONTACT US TODAY

(213) 241-3150

LAUSDAdultEd.org

**Your Future Begins With
Adult Education**

See **You In School!**



Your Future Begins With Adult Education

Learn English Earn Your Diploma Train for a Career Tuition-Free

See You In School!