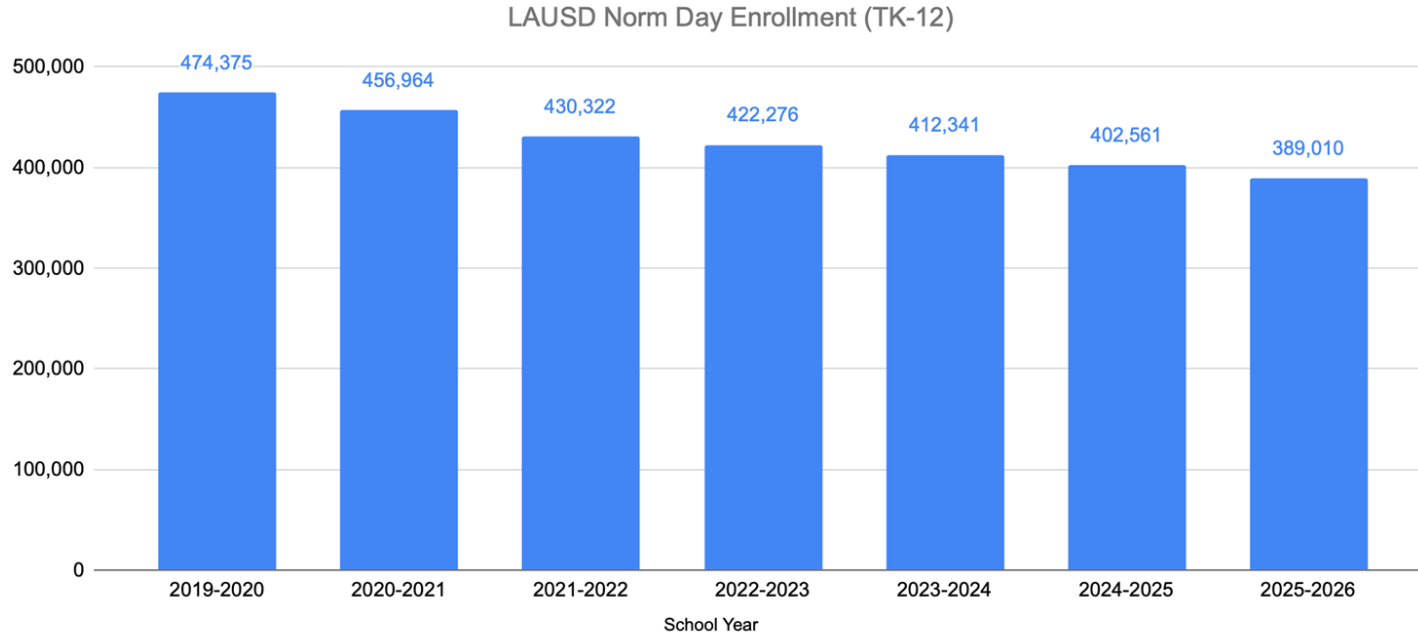


Enrollment Trends and Strategies to Uplift Students

Committee of the Whole Meeting
January 20, 2026

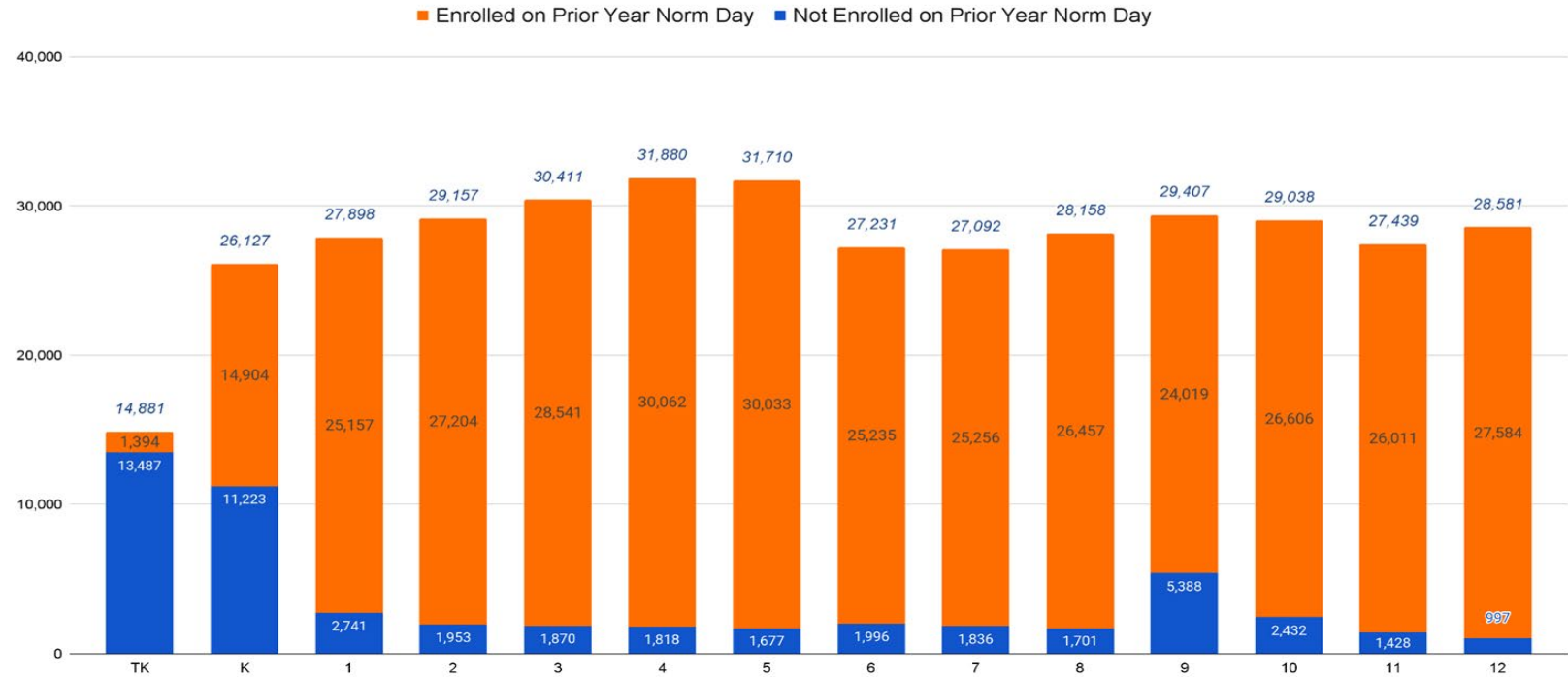
Enrollment Trends for LAUSD TK-12



Source: LAUSD Budget Services Adopted Final Budget 2025-2026 based on final Norm Day TK-12 enrollment, excluding preschool and TE students.

2025-26 Enrollment Counts by Grade

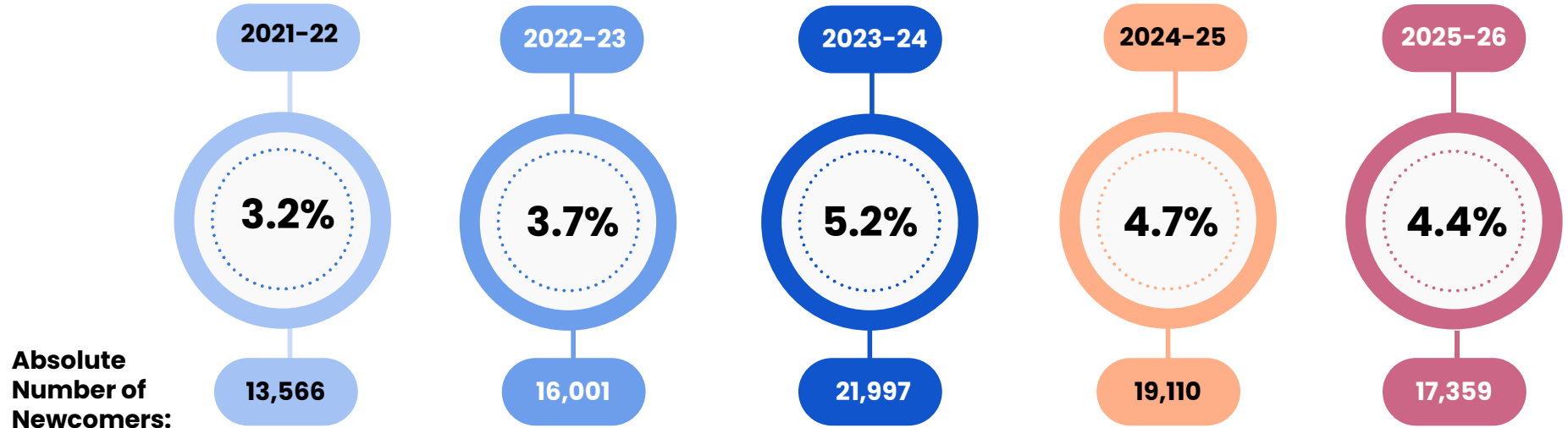
2025-2026 Norm Day Enrollment Counts by Grade Level (TK-12)



[Source: Focus Final Norm Day Dashboard-Student Details](#)

Methodology: Examines 2025 Norm Day Enrollment to determine if student was enrolled in a District school on Norm Day 2024.

Newcomer Enrollment



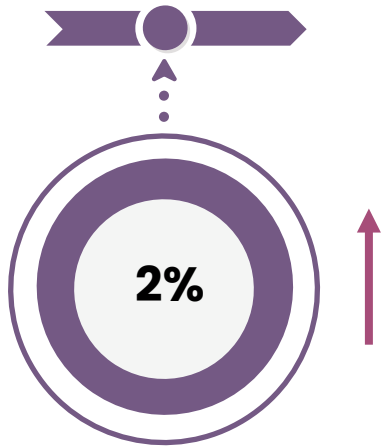
Newcomer enrollment steadily increased from the 2021-2022 to 2023-2024 school year and has **declined** in 2024-2025 and 2025-2026.

Note: For each school year, the newcomer enrollment count is expressed as a percentage of the overall Norm Day enrollment count for that school year.

Additional Enrollment Information

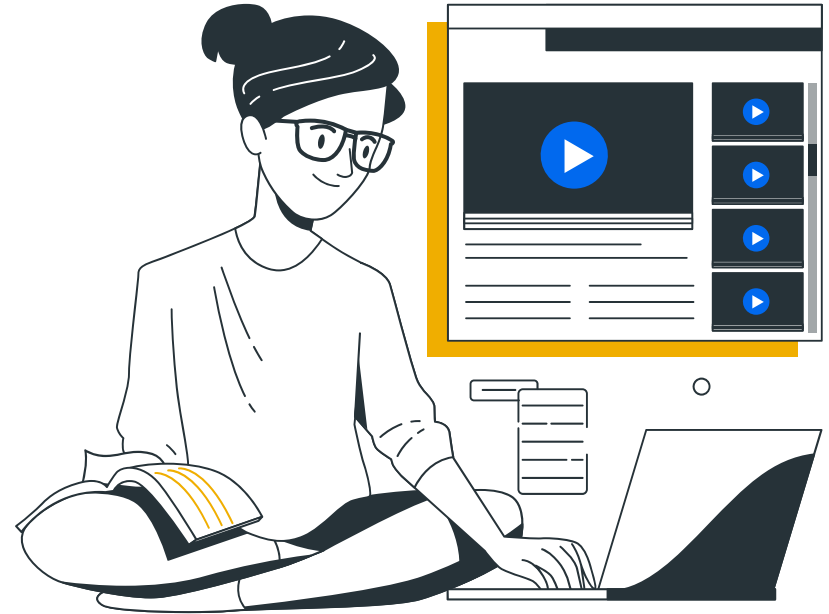
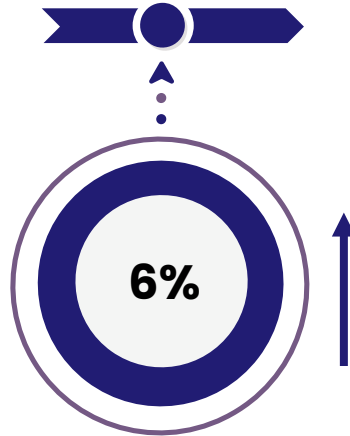
1-Year Enrollment
Change

**Virtual Academies
Independent Study (TK-12)**
(6 schools; 13 satellites)



1-Year Enrollment
Change

**City of Angels
Independent Study (TK-12)**
(1 school; 31 satellites)



[Source: Focus Final Norm Day Dashboard-Student Details](#)



LAUSD
UNIFIED

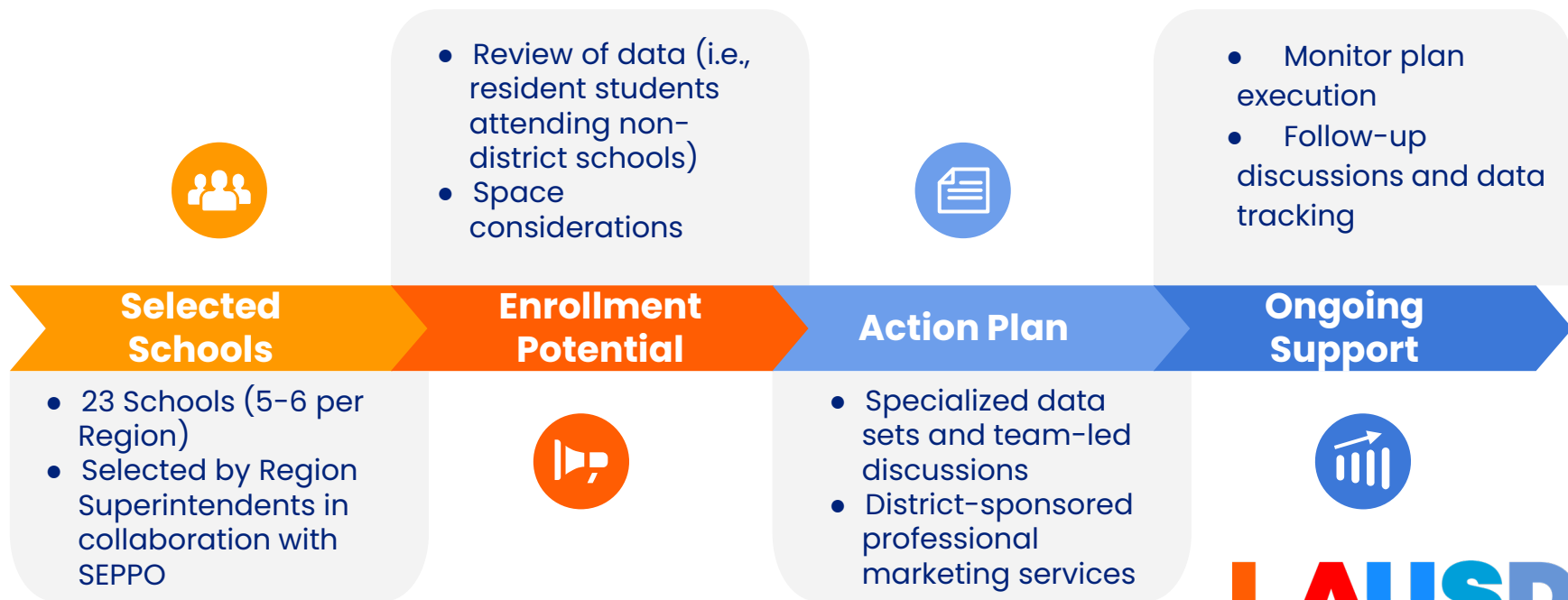
Strategic Enrollment Support

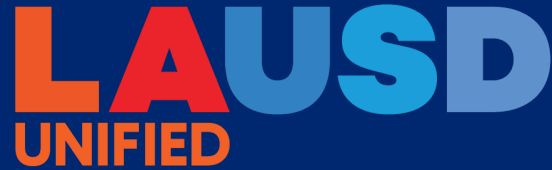
Resources and Support Available for Regions and Schools

Support Area	Action
Vision Setting	Provide reflection tools and templates to help schools craft and clearly communicate their unique value and academic vision.
Marketing and Engagement	Offer branding strategies, newsletter/social media tips, and ideas for enhancing family-school partnerships.
Fostering Relationships and Welcoming Environments	Focus on building positive relationships with all families; include school climate checklists and examples of enrollment-ready practices for front office and staff.
Articulation and Feeder Alignment	Encourage collaboration across grade levels and school types (elementary, middle, high) to retain and recruit students.
Use of Data	Guide administrators in using local enrollment data to target efforts, set goals, and monitor impact.
Landscape Analysis	Conduct a comprehensive PK-14 Program Landscape Analysis with asset mapping to document and analyze LAUSD's academic, enrichment, and support programs. The goal is to strengthen coherence, equity, and transparency in program access and delivery for <u>all</u> schools.

Targeted Support for Select Schools: iEnroll Pilot

Purpose: To strategically conduct outreach to increase enrollment



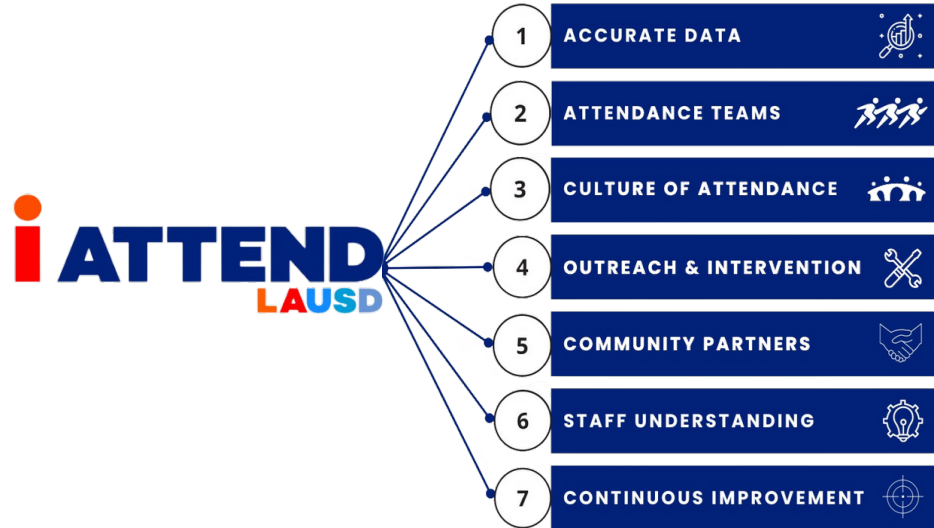


**Strategies to Uplift Students and
Maintain School Enrollment and
Promote Attendance**

iAttend

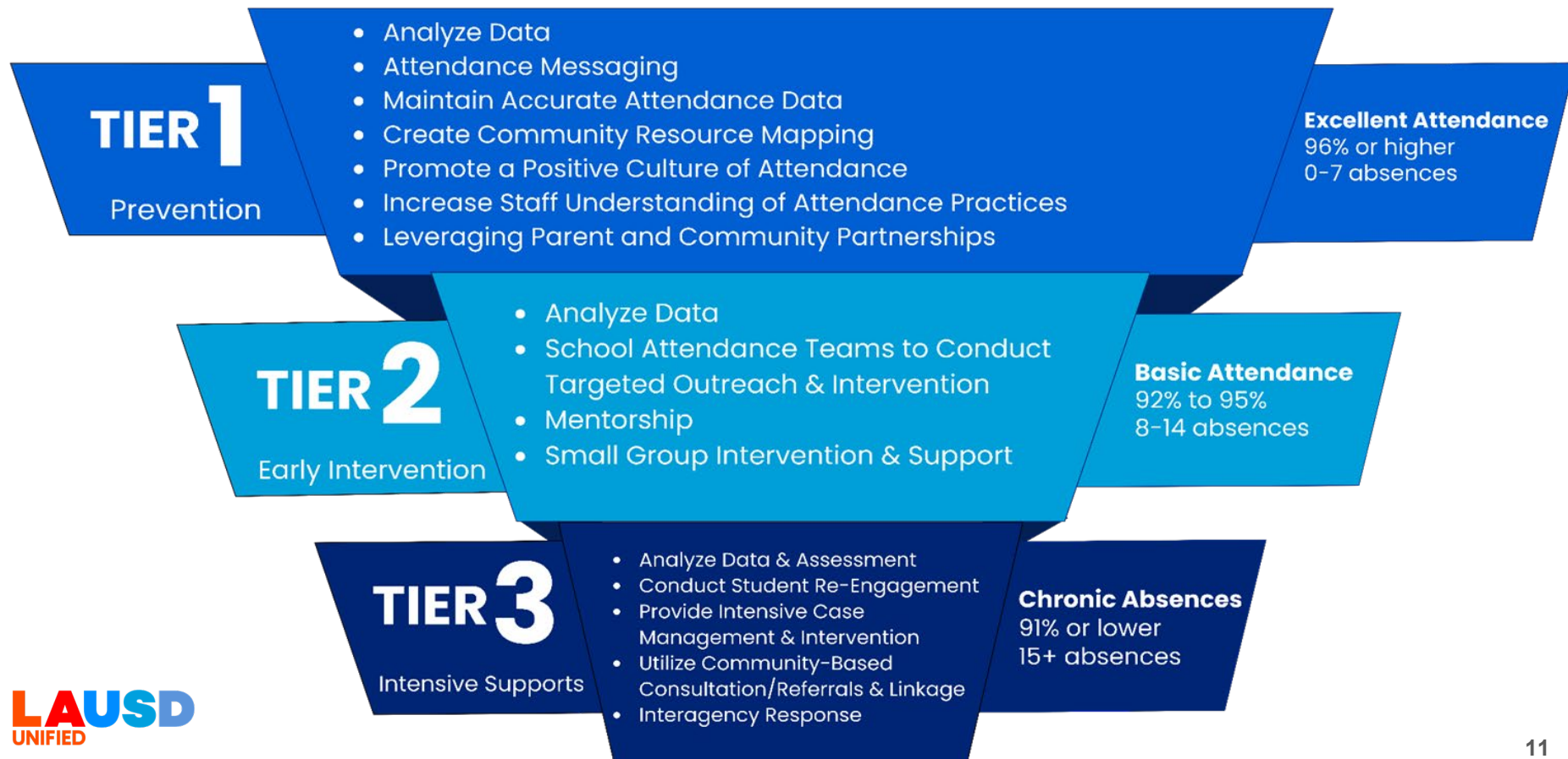
- District-wide effort aimed to **promote coherency** and a **shared responsibility** to improve student attendance.
- Provides schools with a **roadmap** to enact a **multi-tiered system** of support aimed to remove barriers to student attendance.

7 elements to improve student attendance:



When **Students** Attend, We **ALL** Win!

Multi-Tiered System of Services and Supports for School Attendance

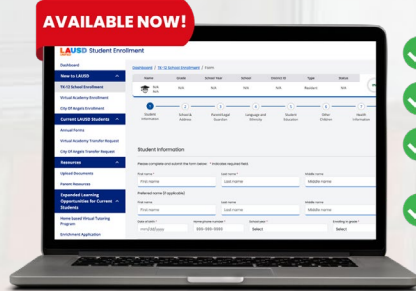


Streamlined Enrollment Online, Paper Forms, and Affidavit Support



Electronic Enrollment Option (ONE ENROLLMENT)

New students now have the option to complete and submit their enrollment forms online (TK–12, City of Angels, Virtual Academies)



- ✓ Fast & easy
- ✓ Available 24/7
- ✓ Secure & paperless
- ✓ Track your updates in real-time

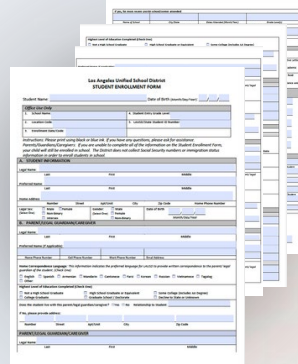
✓ Easier access for working parents

✓ Reduced staff time needed for data entry



Paper Enrollment Options

Available at any time during regular school hours, front office team is prepared to assist families.



✓ Enhanced accessibility for families who favor paper enrollment.



Affidavit Immediate Enrollment

Affidavits enable families with missing documentation to enroll immediately.

Provides support to families experiencing housing instability, dealing with immigration-related challenges or other crisis situations.

Affidavits available in multiple languages

- Caregiver,
- Birth certificates
- Parent identification
- Proof of address

✓ Supports Immediate Enrollment for Students

✓ A reduction in delays due to missing or incomplete documentation.

WHEN STUDENTS ENCOUNTER BARRIERS THAT HINDER THEIR ABILITY TO REMAIN ENROLLED AND ATTEND SCHOOL, WE:

Make **due diligence** efforts to ensure the student isn't withdrawn simply because it's assumed they've moved.

If there are barriers to attendance, the **focus is on addressing those barriers** rather than withdrawing the student.

These efforts help keep students **safe, supported, and connected to school.**

Targeted support and outreach



Daily attendance data tracking to identify at risk students



Directly engage and connect with families and offer support



Coordinate interventions and offer district and community referrals

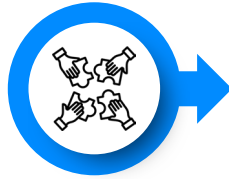
Board Resolution (Res-001-25/26)

September 2025 – Child Welfare and Attendance Month

WE FOCUS ON KEEPING STUDENTS CONNECTED AND ENGAGED IN SCHOOL



Regional Compassion Teams



Connect with families



WE ARE ONE

Family Preparedness Care Package



Non-Routine Transportation



Support families impacted by immigration

coordinating resources and care.



Identify students for the Home to School Transportation Project.



Monitor access and progress

ensuring families receive effective services.



Consult with school staff

referring cases needing additional intervention.



Collaborate as a team

to provide coordinated regional support.



Serve as liaison

between schools, regional offices, and central office.

The Regional Compassion Teams includes five Pupil Services and Attendance Counselors in each region, offering specialized support to communities affected by immigration enforcement policies.

Case Example:

A mother of four lost her job, and the family fell behind on rent, lost their home and was temporarily staying in a shelter.



School and PSA teams provided immediate advocacy and support.



Regional Compassion Team coordinated with HEO, FamilySource, and YouthSource partners .



Compassion Fund approved emergency assistance to stabilize the family.

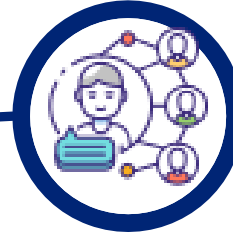
Due to this coordinated effort, the students remained enrolled, supported, and connected to their school, even during one of the most challenging times in their lives.

Case Example:

A family of three was impacted when the father was detained by ICE, leaving the mother as the sole provider without any income and caring for their school-aged child. They were temporarily relocated to another home.



Referrals made to Amanecer Community Agency, Family Source Center, and **Compassion Fund**.



Regional compassion teams conducted outreach through home visits, coordinated safe school dismissal, and ongoing contact with the mother by PSA and SSS Counselor.



Clothing and food pantry resources offered.

As a result of this collaborative initiative, the student continues to attend school and the mother and student are connected to resources and support from the regional team.

Thank You!