

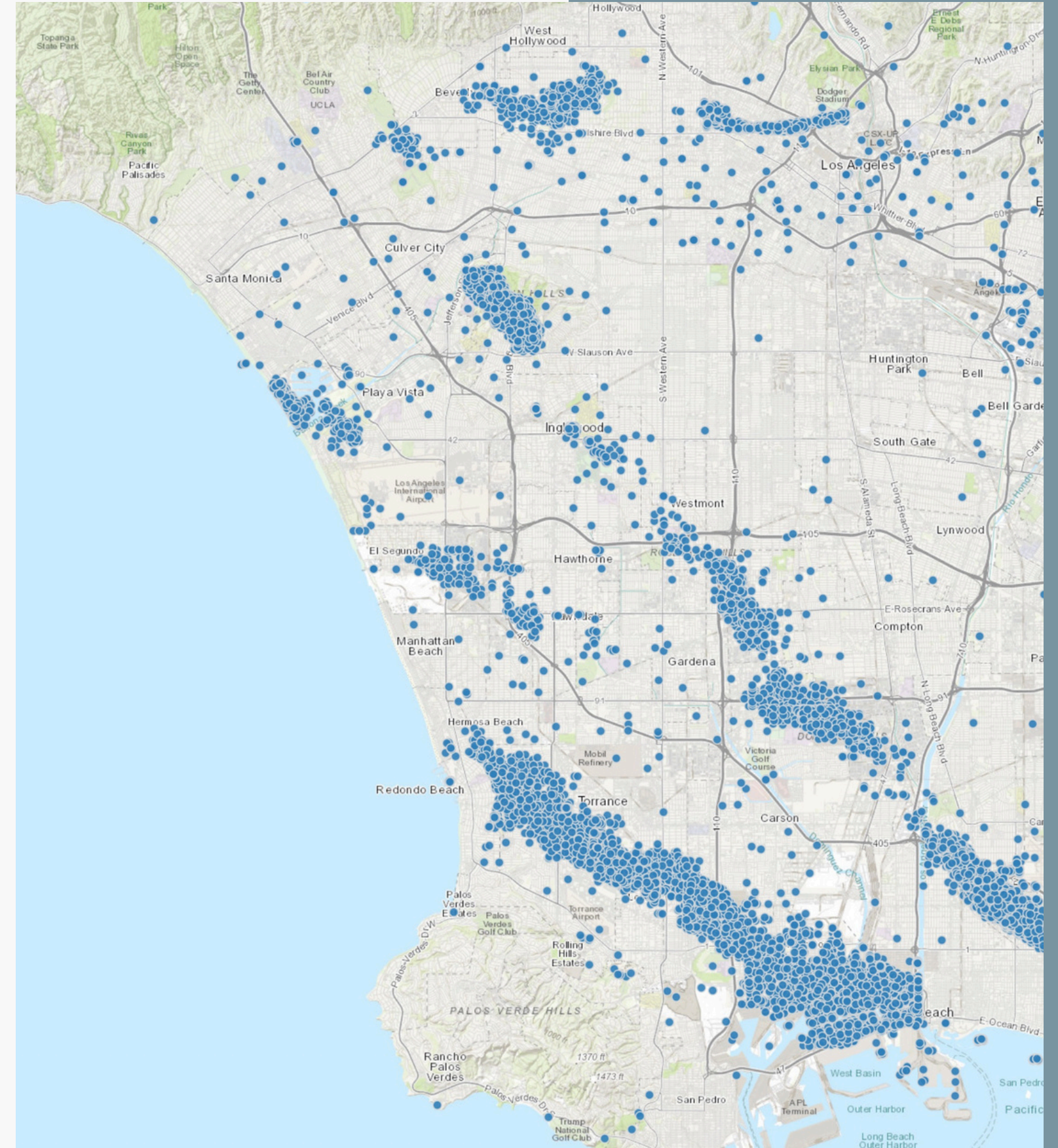
AN OIL WELL IN EVERY YARD

LIVING WITH LA'S OIL HISTORY

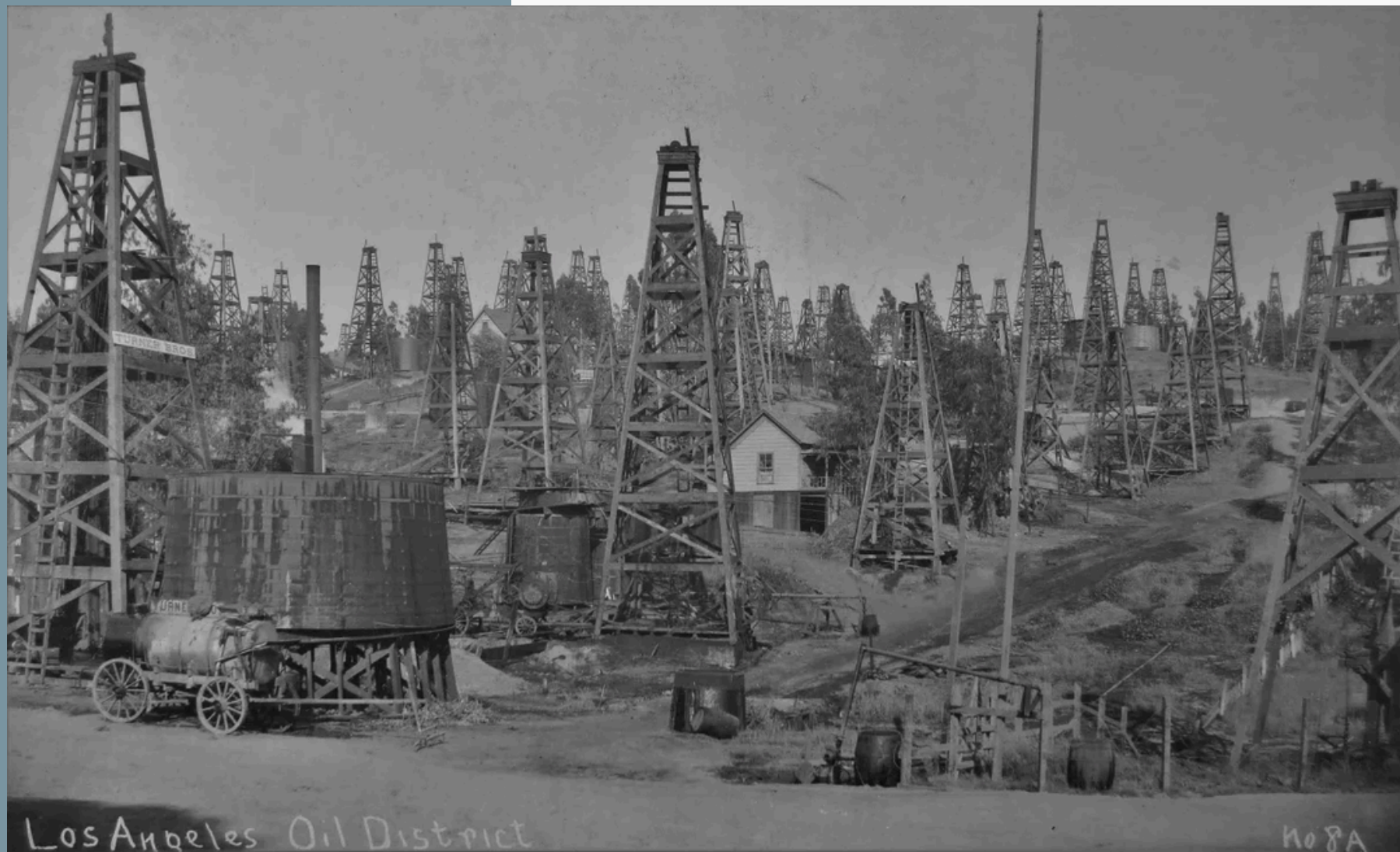


Oil in Los Angeles

- There are more than 5,000 active, idle, or orphan wells across Los Angeles.
- 3.3 million residents of LA County live near an uncapped oil well.
- Prolonged exposure to an uncapped oil well is connected to respiratory conditions, chronic illnesses, cancers and more



HISTORY OF OIL IN LOS ANGELES



- Edward Donheny first discovered oil in Los Angeles shortly after the Civil War.
- At one point, California was the largest oil-producing state in the nation.
 - By 1930, California produced 25% of the world's oil.
- Inglewood Oil Field is the nation's largest urban oil field.



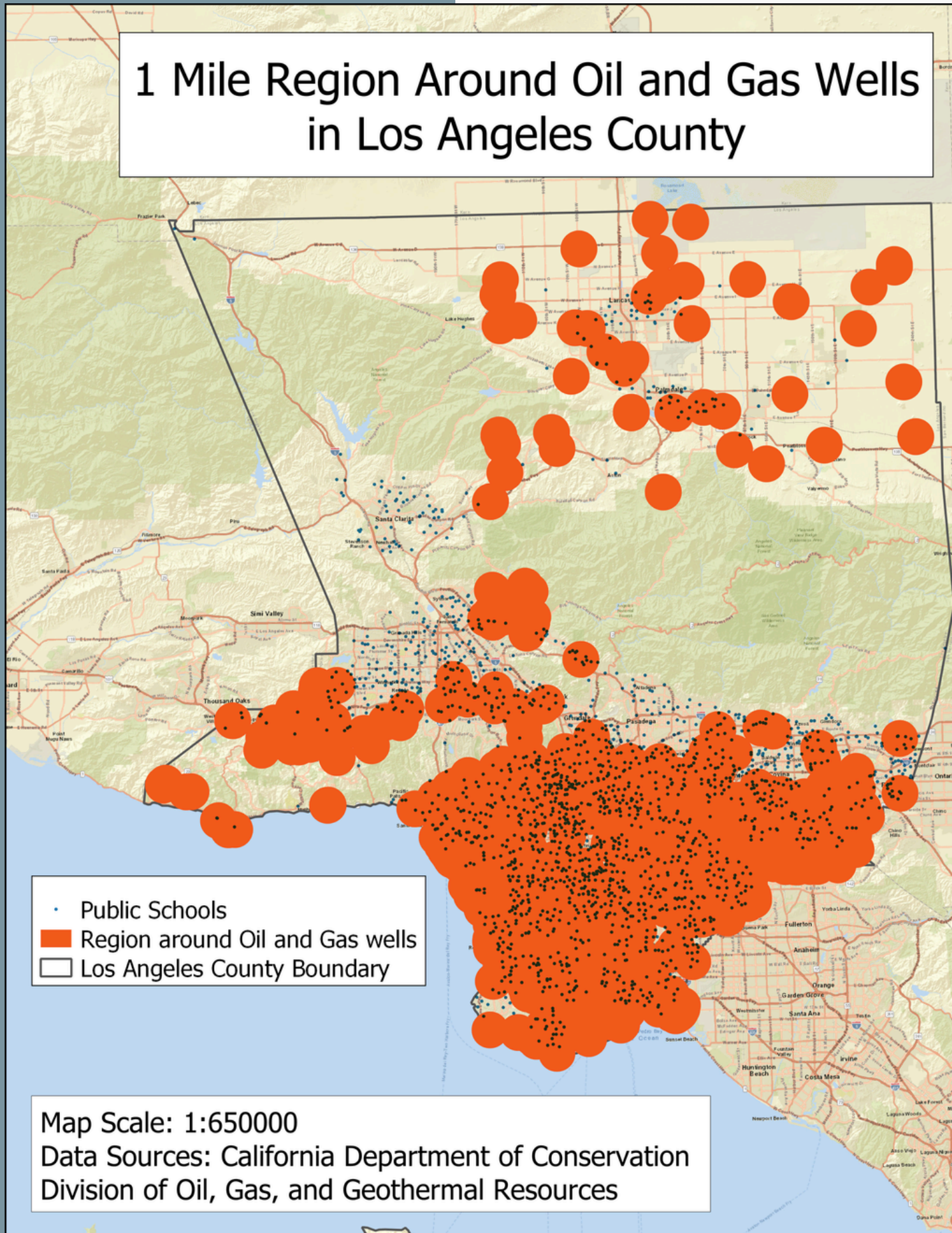
Vista Hermosa Community-- LAOF



The Most Expensive High School in LA's History Finally Opens

The school is "one of 74 new schools completed as part of LAUSD's \$12.6 billion new school construction program to end involuntary busing and year-round calendars, and to provide every student a seat in a neighborhood school" and is both a crowning jewel and a thorn in the side for the massive district. The project started twenty years ago, but hit a major snag in the 1990s when it was determined that the site had soil contamination, [described by cbs2.com](#) as grounds beleaguered by "old oil wells, and potentially harmful gases -- methane and hydrogen sulfide -- associated with petroleum were seeping to the surface."

1 Mile Region Around Oil and Gas Wells in Los Angeles County



Total Number of Public Schools in Los Angeles County: 1974

| Schools that are: | Number of Schools | % of Total Schools |
|-----------------------------------|-------------------|--------------------|
| Within a 1000 Feet of an Oil Well | 256 | 12.97% |
| Within a Half Mile of an Oil Well | 730 | 48.07% |
| Within One Mile of an Oil Well | 1218 | 77.36% |



Development and Remediation Standards



Strong Enforcement Practices

- We urge ending all exceptions, loopholes, and standing practices that might currently prevent the complete enforcement of State and local safety standards for wells

Standard of Care

- Local Governments should develop and enforce a standard of care around oil wells to ensure safety, environmental protection, and regulatory compliance.

Remediation for Residential and Community Use

- Remediation to the highest standard possible for residential and community use.
- Consider the reuse of oil sites can be directed towards community-serving and community-driven uses

Oil Well Location Standards



Oil Well Search

- Comprehensive search standards depending on nature of oil field
- Excavating to natural formation most comprehensive standard.



Oil Well Clean-Up

- Tests should be conducted to ensure there is no leakage, and local governments should ensure that all located wells are brought up to current plugging standards.



Burden of Proof

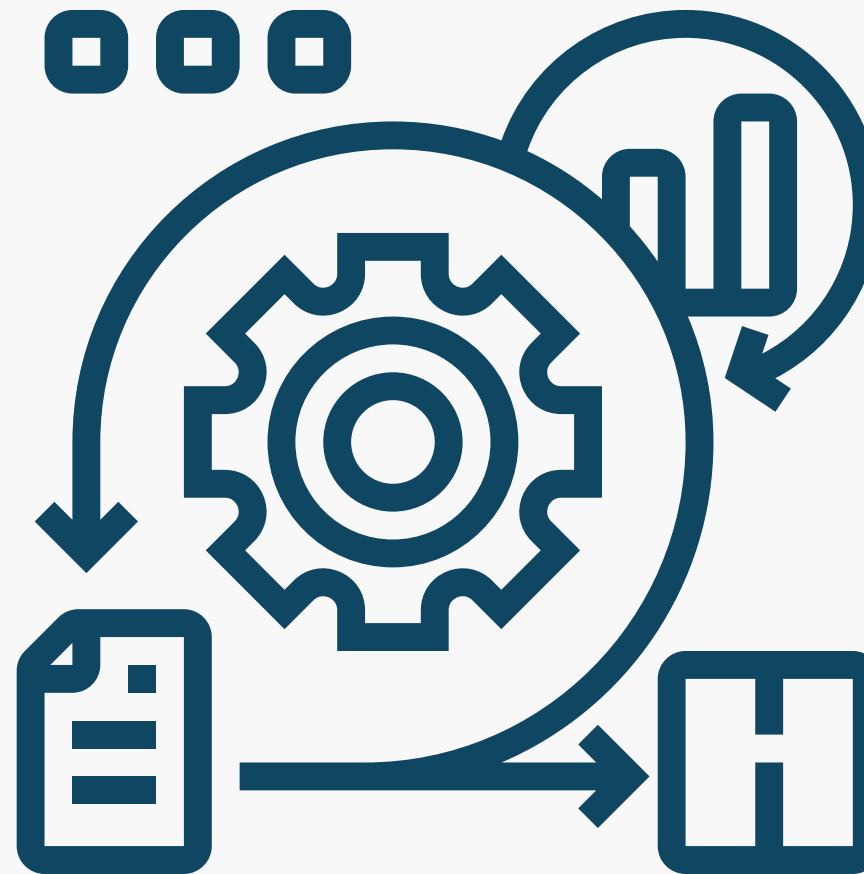
- Developers and operators must demonstrate that a well is not on a property.

Environmental Reviews for Oil Properties



Complete EIR for Oil Property Projects

A full environmental impact review should be required for all development projects on/near oil wells to determine the mitigation measures needed to protect public and environmental health.



Public Health Analysis

Local governments should require comprehensive analysis of public health impacts from the cumulative effects of environmental hazards on occupants of the site, regardless of where the hazards originate



Design Regulations



CalGem Recommendations

- Currently, CalGem recommends that no structures should be placed directly on a well, capped or not.
- LAUSD should adopt a similar recommendation

Access Points

- Local governments should also require that any and all developments not impede future access to wells, and will have clear access points to facilitate well plugging.

Clean Air

- LAUSD should also ensure the use of the highest possible cleaning, and filtration standards for air ventilation systems, as well as comprehensive methane detection and alert systems.

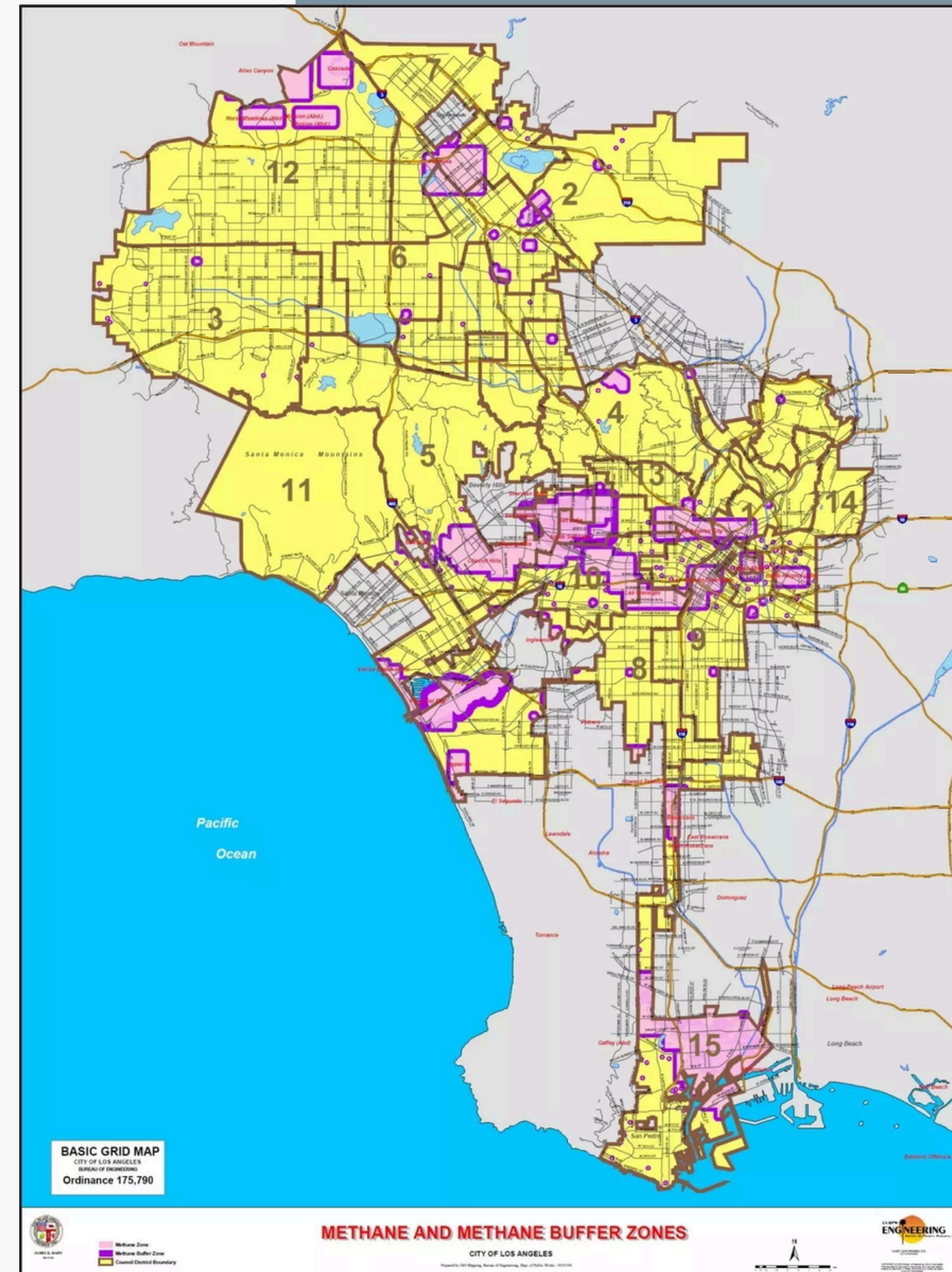
Methane Detection

Regular Updates and Inspections

- We recommend ensuring that all existing methane mitigation systems are operational, inspected, and updated monthly, or at the manufacturer's recommended frequency.

Quarterly Reporting

- The property owner should be required to submit quarterly reports related to methane alarm activity and methane gas measurements.
- Quarterly reports could be evaluated and made publicly available, and communicated to residents of MFRB.



Oil Expert Bench



Independent Accountability

- We urge local governments to take all necessary steps to ensure that contracted oil well experts are upholding the accuracy of the review.

Oil Expert Bench

- Consists of people who are experienced in the historic well drilling, completion, plugging, and abandonment methods employed by oil operators.

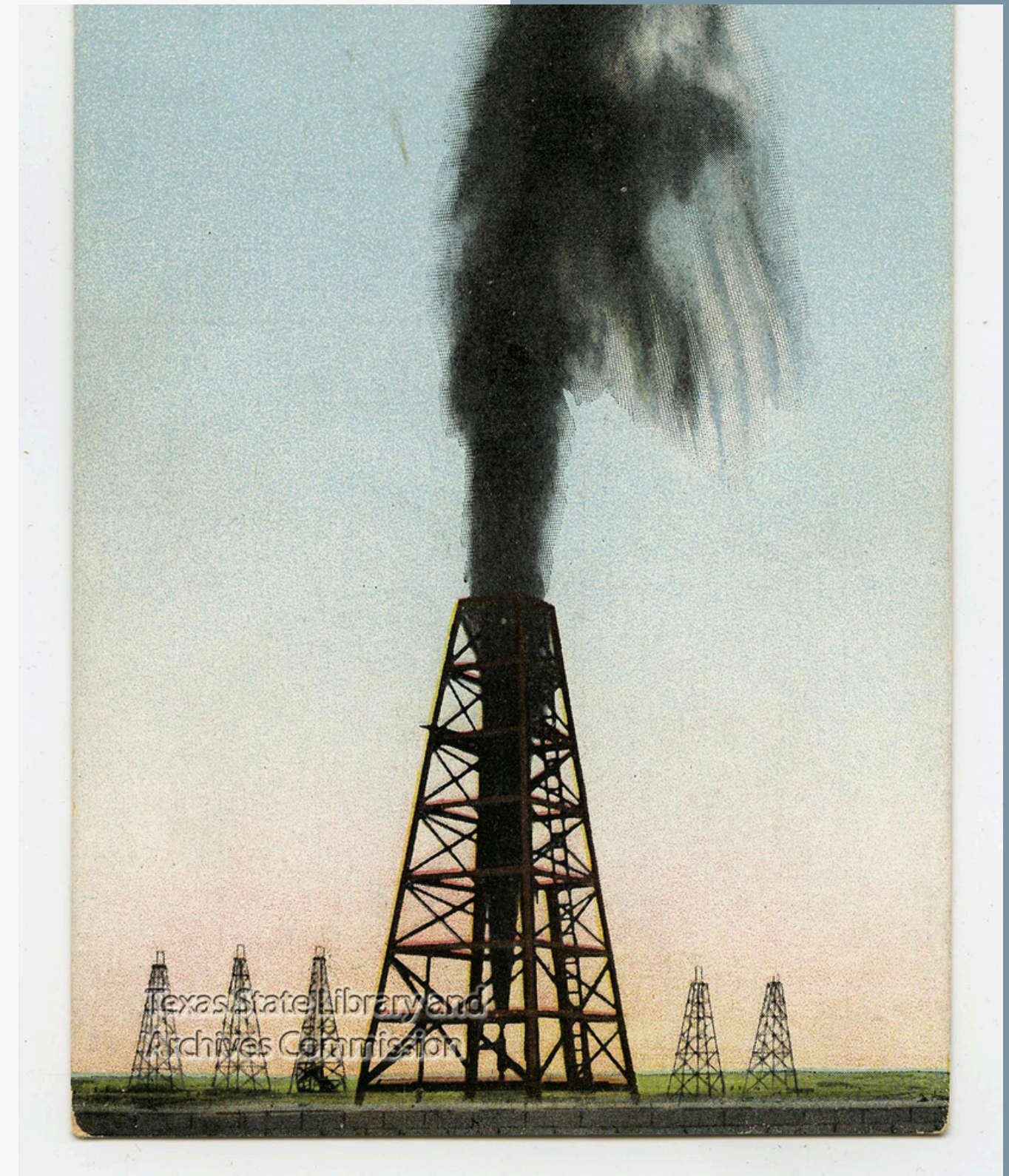
Historic Oil Field Conditions

- Due to lack of regulations and historic building materials, historic oil fields (pre-1945), historic oil fields are generally more complicated to navigate and conduct well operations
-

Oil Well Discovery

LAUSD relies primarily on property developers to report to CalGEM the location of any wells discovered during the course of development and update site plans accordingly.

We recommend that the city require developers to immediately notify CalGEM and the appropriate city department whenever a well, or potential well, is located, so that the well can be properly investigated.



Questions?