



## Board of Education Report

**File #:** Rep-298-23/24, **Version:** 1

### **Consideration of the Broadway-Manchester Street Lighting Maintenance Assessment District Petition May 7, 2024**

#### **Facilities Services Division**

#### **Action Proposed:**

Support of the Broadway-Manchester Street Lighting Petition within the City of Los Angeles (City) and authorize the Chief Facilities Executive or her designee to submit a petition(s) and subsequently a ballot(s), and/or execute any other reasonable instruments on behalf of Los Angeles Unified, for an annual assessment to Los Angeles Unified in an amount not to exceed \$15,368.94 (not including annual Consumer Price Index (CPI) increases).

#### **Background:**

The Broadway-Manchester Street Lighting District is seeking support of a petition to add 439 new pedestrian lights along Manchester and Broadway in South Los Angeles, of these, 13 streetlights would be installed along the perimeter of Manchester Avenue Elementary School (10) and Danny Bakewell Sr. Primary Center (3), as identified in Exhibit A. The Broadway-Manchester Street Lighting District will need to submit the petition to install the additional streetlights along with the ballots to property owners to vote on the assessments. The Broadway-Manchester Lighting District provides servicing, installation, maintenance, and operation of street lighting. The cost for services includes but are not limited to electricity, lamps, fixtures, poles, wires, repair crews and vehicles and other items necessary to operate streetlights in the City of Los Angeles. The additional lighting will further enhance safety measures and support safety passages.

Los Angeles Unified currently pays \$1,546.37 annually for the existing street lighting district in this area. If approved and implemented the annual amount for the special assessment projected by the Broadway-Manchester Lighting District for the Manchester Avenue Elementary School and Danny Bakewell Sr. Primary Center would increase to \$15,368.94.

School	APN	Existing Number of Lights at school perimeter	Proposed Number of New Lights at school perimeter	Current Assessment	Proposed Annual Assessment
Manchester Avenue ES	6038-011-906	6	10	\$1,546.37	\$14,051.60
Danny Bakewell Sr. Primary Center	6038-022-913	2	2	\$ 0.00	\$ 1,053.87

School	APN	Existing Number of Lights at school perimeter	Proposed Number of New Lights at school perimeter	Current Assessment	Proposed Annual Assessment
Danny Bakewell Sr. Primary Center	6038-022-908	1	1	\$0.00	\$263.47
	<b>9</b>	<b>13</b>	<b>\$1,546.37</b>	<b>\$15,368.94</b>	

The proposed assessment is subject to annual increases based on the Broadway-Manchester Lighting District budget. As opposed to Business Improvement Districts, no discount from the assessment is currently being offered or proposed by the City of Los Angeles. Facilities staff will continue to contact the Los Angeles City Bureau of Street Lighting to attempt to secure a reduced rate.

The Broadway-Manchester Lighting District is located in Region South, Board District 1 (Dr. George McKenna).

**Expected Outcomes:**

Approval of the action will authorize the Chief Facilities Executive or her designee to execute the petition in support of the proposed lighting assessment provided by the Broadway-Manchester Lighting District and pay the annual assessment for the Broadway-Manchester Lighting District. The increased lighting will help further enhance safe passages to and from school for students attending Manchester Avenue Elementary School and Danny Bakewell Sr. Primary Center.

**Board Options and Consequences:**

A “yes” vote by the Board will authorize the Chief Facilities Executive or her designee to execute the petition of the Broadway-Manchester Lighting District including all necessary agreements to confirm support of the Broadway-Manchester Lighting District.

A “no” vote may result in the Broadway-Manchester Lighting District failing to obtain a majority affirmative vote of the property owners in the Broadway-Manchester Lighting District. However, if the Broadway-Manchester Lighting District does secure the required support, Los Angeles Unified would still be obligated to pay the cost associated with the special assessments.

**Policy Implications:**

Los Angeles Unified does not have a current policy with regard to lighting districts. The proposed action advances Los Angeles Unified’s 2022-2026 Strategic Plan Pillar 3 Engagement and Collaboration Leading for Impact by growing and leveraging partnerships with community-based organizations. Moreover, it supports the District’s Every School Safe: A Blueprint for Safety.

**Budget Impact:**

The projected annual amount for the assessment of Broadway-Manchester Lighting District in 2025 would be increased from \$1,546.37 to \$15,368.94 in 2025 and subject to increases based on the Broadway-Manchester Lighting District budget annually thereafter. Annual assessment for the Broadway-Manchester Lighting District will be provided by the General Fund, Program Code 15190. This is a new cost and additional funding may be necessary to support. The assessment is an ongoing annual cost and does not have a sunset date.

**Student Impact:**

Improve safety measures and support safety passages around the school perimeter and surrounding neighborhood.

**Equity Impact:**

A lighting district is a geographically defined area within the City, in which services, maintenance, and operations are paid for through a special assessment, which is charged to all members within the district in order to equitably distribute the benefits received and the costs incurred to provide the agreed-upon services, activities, and operations.

**Issues and Analysis:**

Article 13 D (Proposition 218) of the State Constitution requires that a parcel's assessment may not exceed the reasonable cost for the proportional special benefit conferred on that parcel. Article 13 D provides that only special benefits are assessable, and the City must separate the general benefits from the special benefits. It also requires that publicly owned properties, which benefit from the improvements, be assessed.

Los Angeles Unified is not obligated to support the formation of the Broadway-Manchester Lighting District. Regardless of Los Angeles Unified's support, if the Broadway-Manchester Lighting District is approved, Los Angeles Unified will be required to pay its special assessment unless there has been a formal determination that it is exempt.

The City has limited funding to provide certain services, and the Broadway-Manchester Lighting District is able to supplement services that may benefit the community. Supporting the Broadway-Manchester Lighting District is voluntary by the Board, however Los Angeles Unified is obligated to pay the special assessment should the City Council vote to pass the Broadway-Manchester Lighting District petition presented.

**Attachments:**

Exhibit A - Area Map

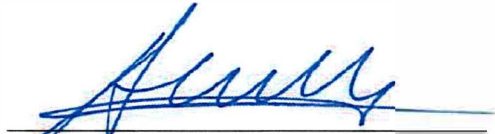
**Informatives:**

None

**Submitted:**

05/06/24

**RESPECTFULLY SUBMITTED,**



ALBERTO M. CARVALHO  
Superintendent

**APPROVED BY:**



PEDRO SALCIDO  
Deputy Superintendent, Business Services and Operations

**REVIEWED BY:**



DEVORA NAVERA REED  
General Counsel

\_\_\_ Approved as to form.

**APPROVED BY:**



KRISZTINA TOKES  
Chief Facilities Executive  
Facilities Services Division


**REVIEWED BY:**



NOLBERTO DELGADILLO  
Deputy Chief Business Officer, Finance

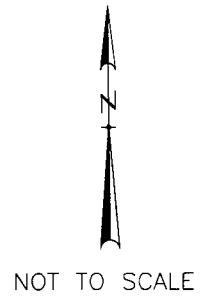
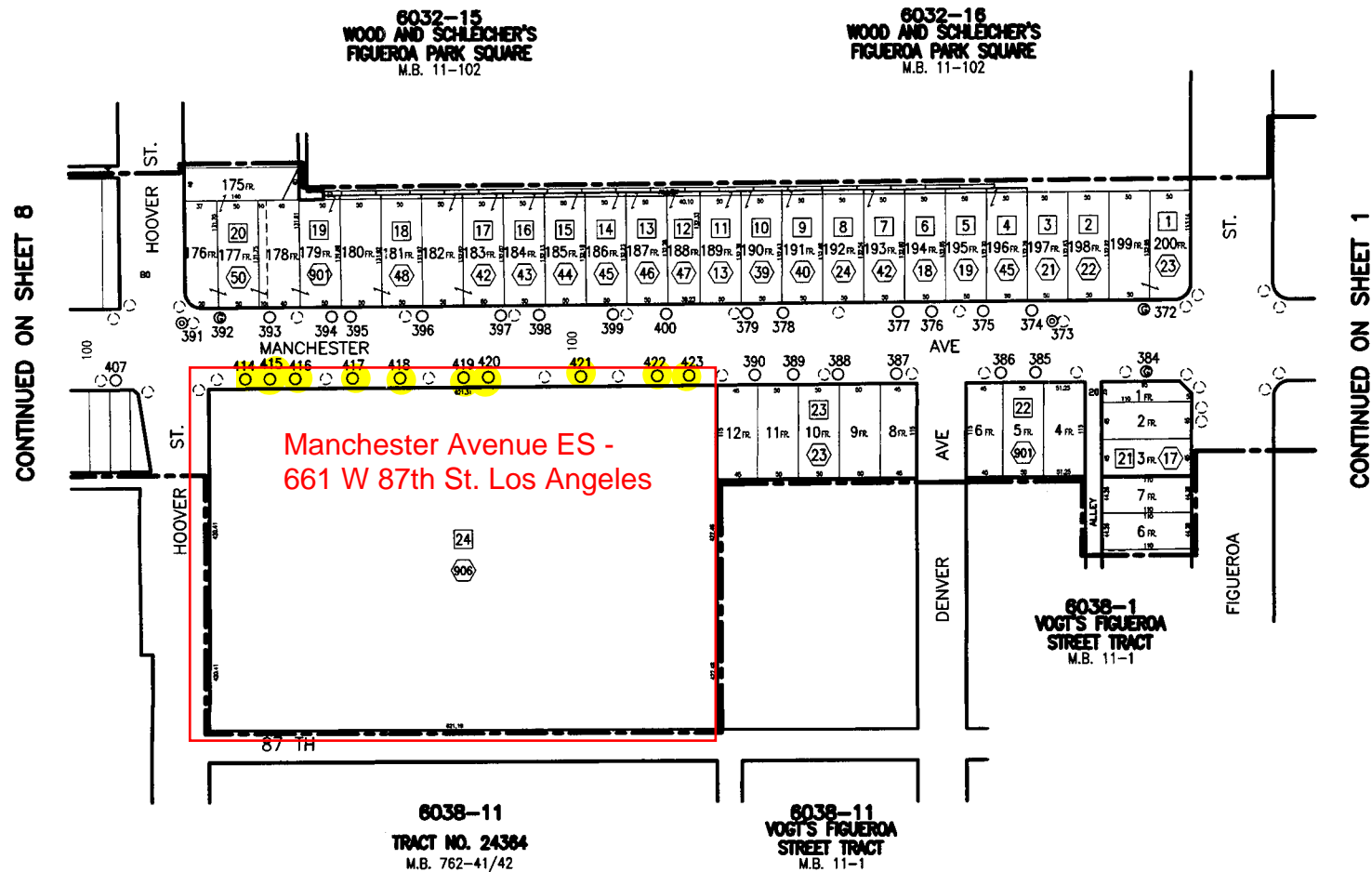
\_\_\_ Approved as to budget impact statement.

**PRESENTED BY:**



AARON BRIDGEWATER  
Director of Facilities Planning and Development  
Facilities Services Division

## AREA MAP

**LEGEND:**

- MAINTENANCE DISTRICT BOUNDARY
- ①②③ NEW STREETLIGHT
- ④⑤⑥⑦⑧
- ⑥
- EXISTING STREETLIGHT
- # CITY ASSESSMENT NUMBER
- 7 LOT TIE
- FUTURE STREETLIGHT

BROADWAY-MANCHESTER ATEP NO.1 L.D.

PREPARED BY BUREAU OF STREET LIGHTING

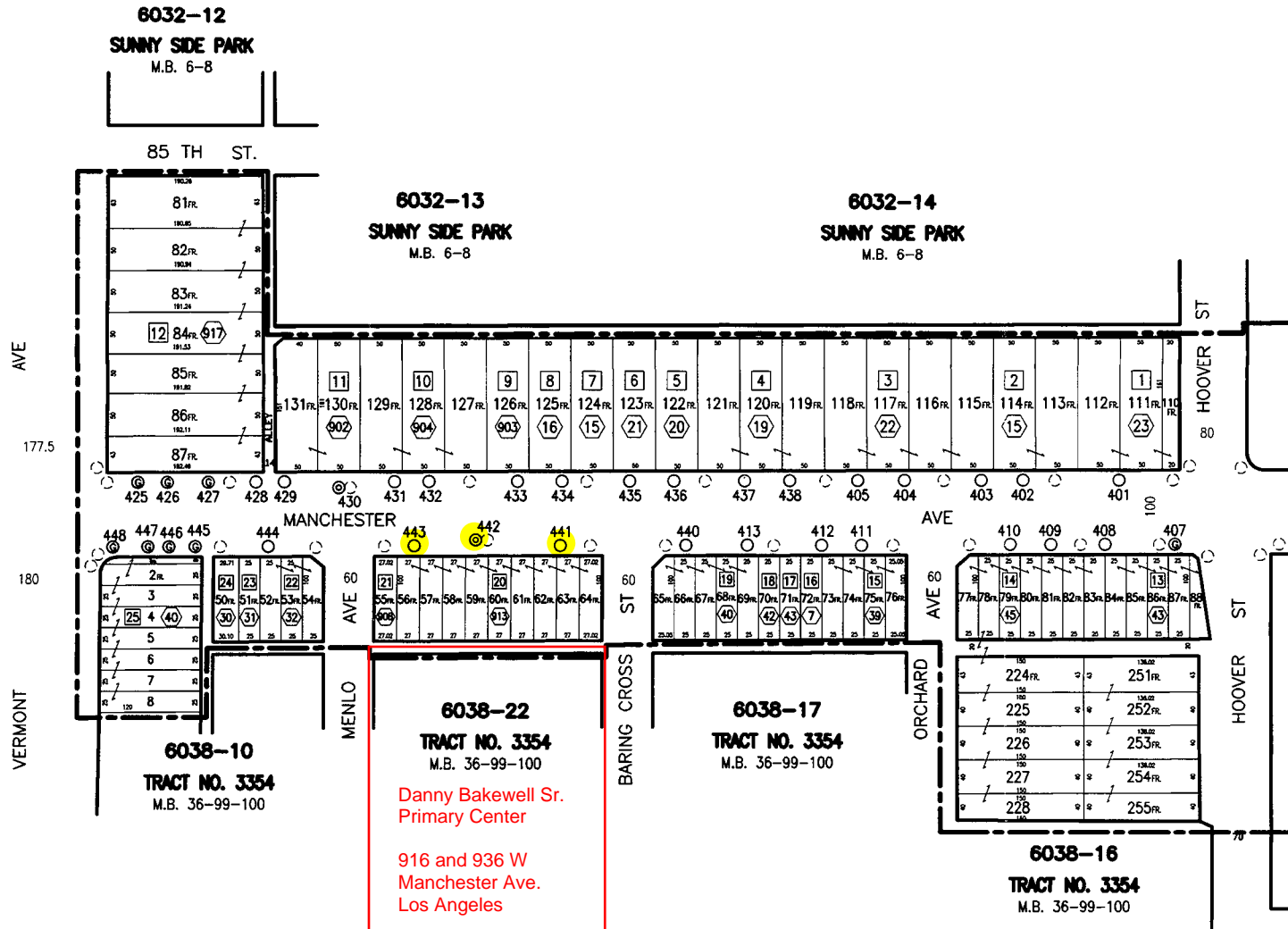
Post No. 1-480  
Council Dist. 8  
Election No. 5599  
Page No. 15886  
Date: 1-31-24

# AREA MAP

sheet 8 of 8



NOT TO SCALE



CONTINUED ON SHEET 7

## LEGEND:

- MAINTENANCE DISTRICT BOUNDARY
- ①②③ NEW STREETLIGHT
- ④⑤⑥⑦⑧
- EXISTING STREETLIGHT
- ⑦ CITY ASSESSMENT NUMBER
- ⑦ LOT TIE
- FUTURE STREETLIGHT

BROADWAY-MANCHESTER ATEP NO.1 L.D.

PREPARED BY BUREAU OF STREET LIGHTING

Post No. 1-480  
Council Dist. 8  
Election No. 5599  
Page No. 15887  
Date: 1-31-24