

Community-Based Safety and L.A. Unified: Mapping the Landscape

Analysis per Community Safety Resolution (Res-023-22/23)



Regular Meeting, May 7, 2024

Independent Analysis Unit

Governing Board of Education

Los Angeles Unified School District

Agenda

- I. What the IAU did
- II. Community-based safety and L.A. Unified
- III. Recommendations and considerations
- IV. Conclusion

IAU Report on Res-023-22/23



Task

“conduct a landscape analysis that reviews which organizations are providing services, what they are providing, and data previously compiled regarding community-based safety approaches”



Questions

What organizations provide community-based safety related services?
In what ways are District partnerships related to community-based safety successful? What are some challenges to successful District partnerships?



Data collection

Convening (listening session)
Conducted internal/external interviews
Compiled list of organizations
Internet research
Literature review



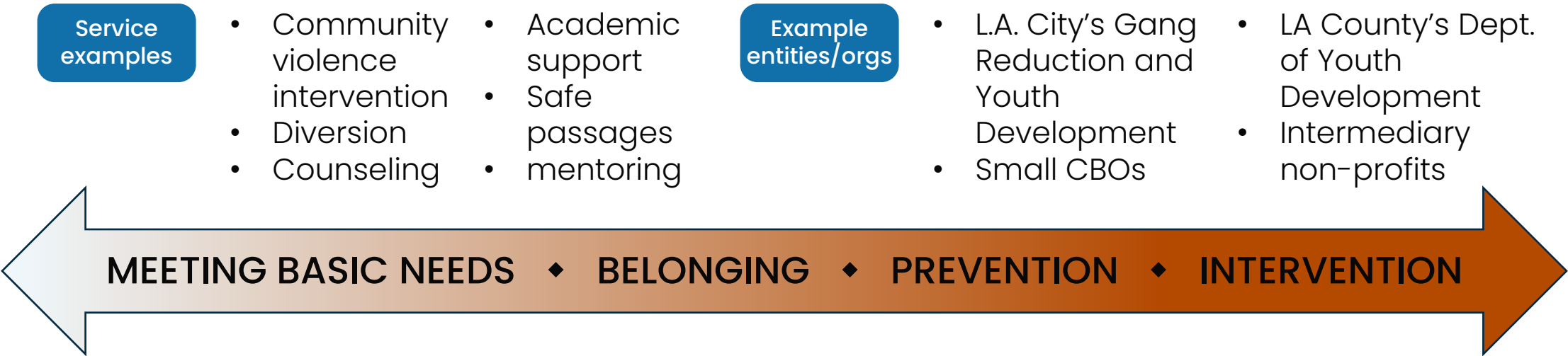
Analysis and reporting

Assessed challenges and opportunities with current/past successful/failed partnerships
Presented and discussed with the School Safety Committee, BSAP steering committee, and the School Culture, Climate and Safety task force
Shared draft report with District staff and Board

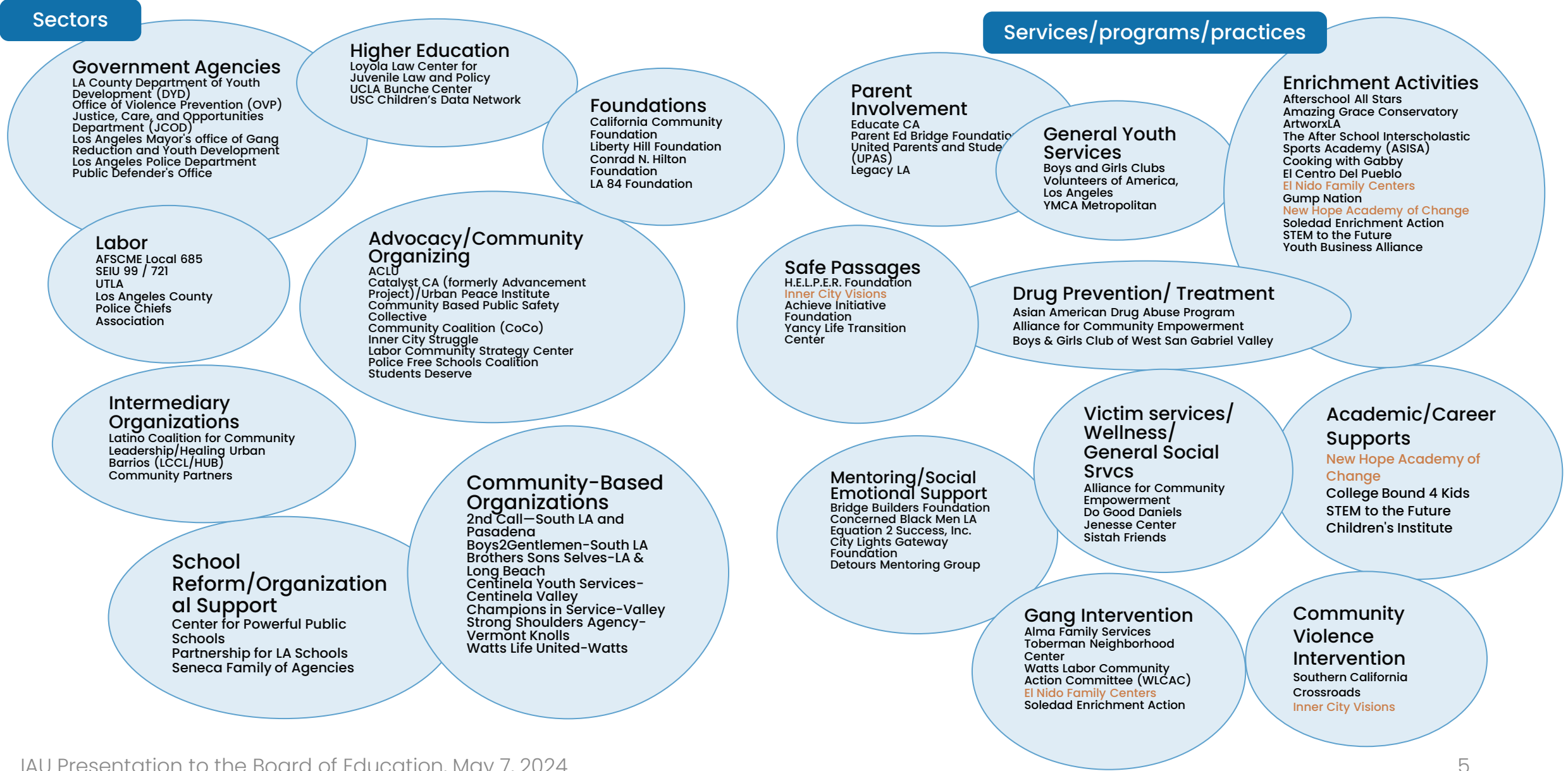
**Public report forthcoming*

What is community-based safety?

An approach to enhancing and maintaining public safety that **actively involves the community**, regards **violence as a public health** issue, sees **criminalization and incarceration as ineffective and harmful**, and seeks to strengthen the “social determinates of safety,” which include components of **healthy communities** such as safe parks, affordable housing, and economic opportunity.



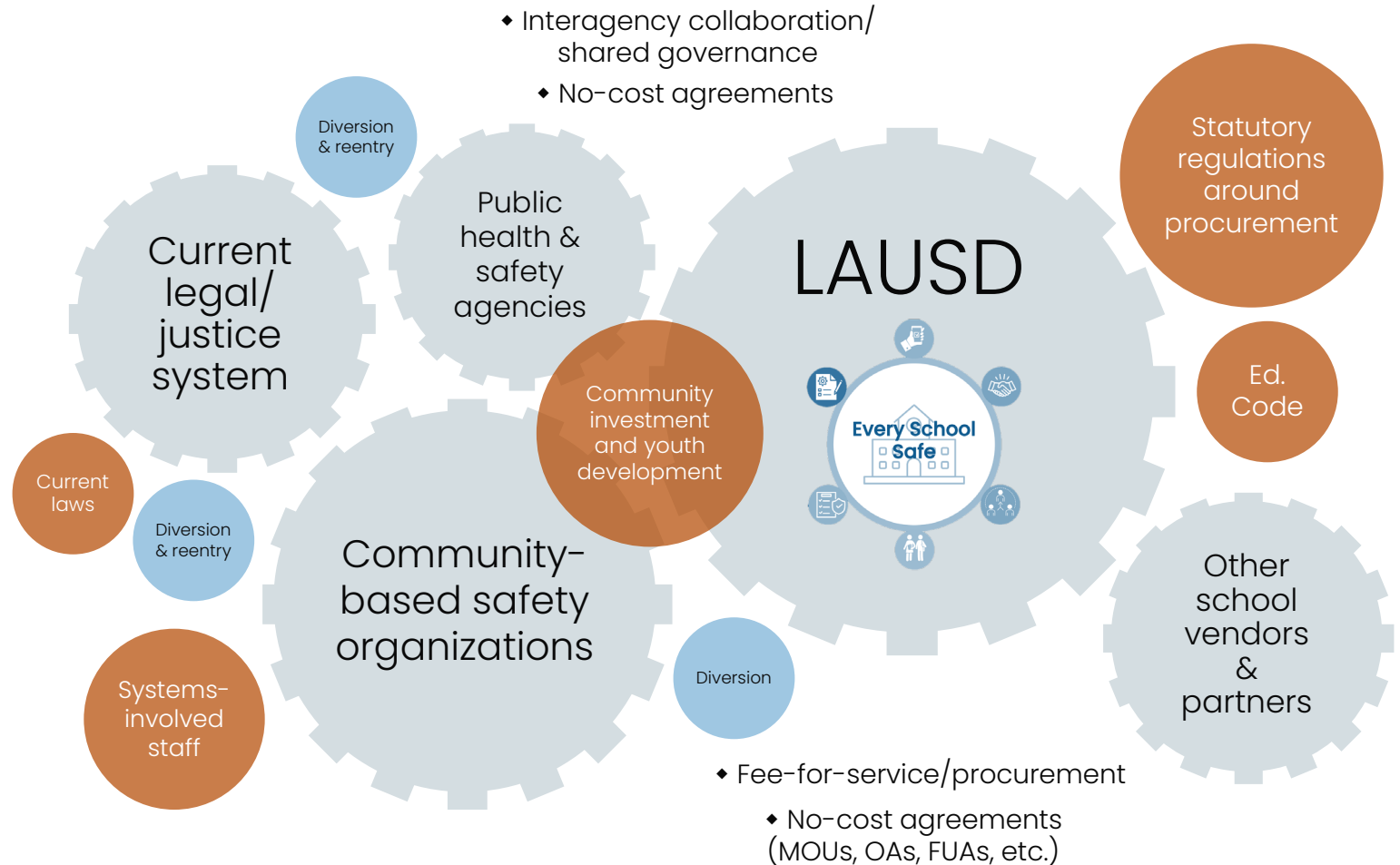
Community-Based Public Safety Organizations



Community-based safety (CBS) is a multi-sector endeavor

- 1 Achieving community-based safety entails **coordination and investment from multiple public entities**
- 2 Community-based safety (CBS) and school safety ecosystems are complex: CBS organizations provide services in different places and ways, following their **own logics and procedures** and **governed by different statutes**

♦ Types of relationships/partnerships



Recommendations

- Monitor the execution and use of **refreshed BSAP bench**.
- **Ease the MOU process** for community partners and schools by improving web-based information and automation.
- Encourage schools to add **representatives from community-based organizations to School Safety Committees** and other ways to use the Integrated Safe School Plan (ISSP) update process to assess needs for and integrate safe passages and other community-based safety programs and practices into school operations.
- Improve procurement **website** or communication to vendors and providers.
- Monitor and evaluate the **quality and effectiveness of safe passages programs** and providers to inform implementation and scale-up
- Encourage the creation of a **multi-agency network organization** that can centralize oversight and coordination of disparate community-based safety programs and initiatives and build capacity among community-based organizations.

Future Considerations



Funding – no single, large state or federal funding source; grants usually go to organizations



Staffing – external providers vs. in-house not clear at this time



Independent landscape analysis – may be justified if a specific need or gap is identified in the future

Key Takeaways

- Community-Based safety is a multi-sector, collaborative, long-term process and practice; not solely an L.A. Unified initiative
- The District can continue to improve the services it delivers at school sites;
- It can also improve partnering and collaboration through improving internal processes