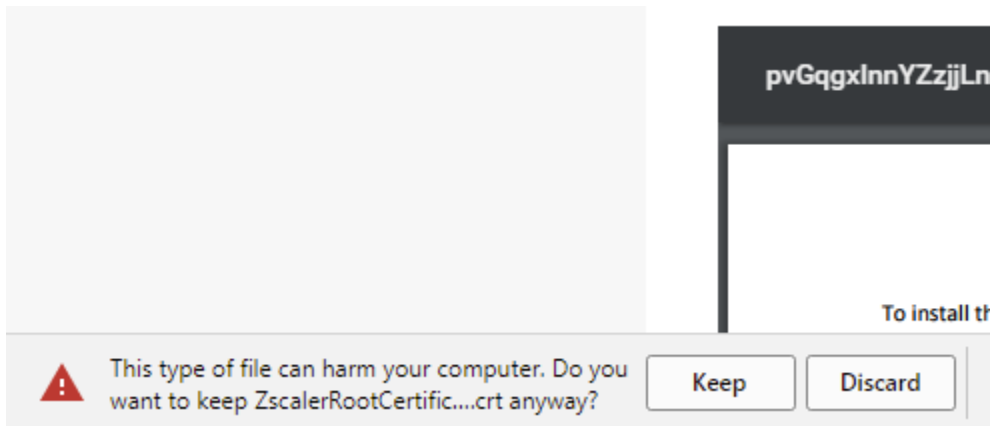
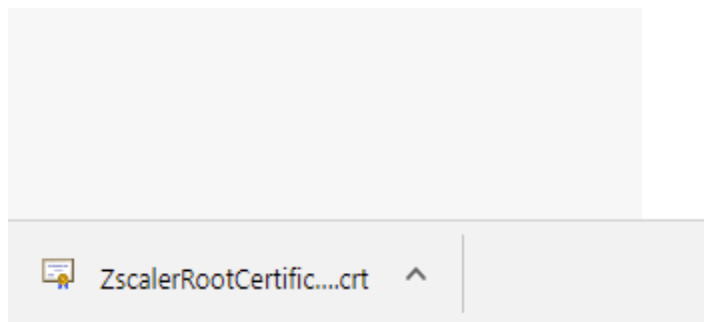


## Certificate Installation Guide for Windows

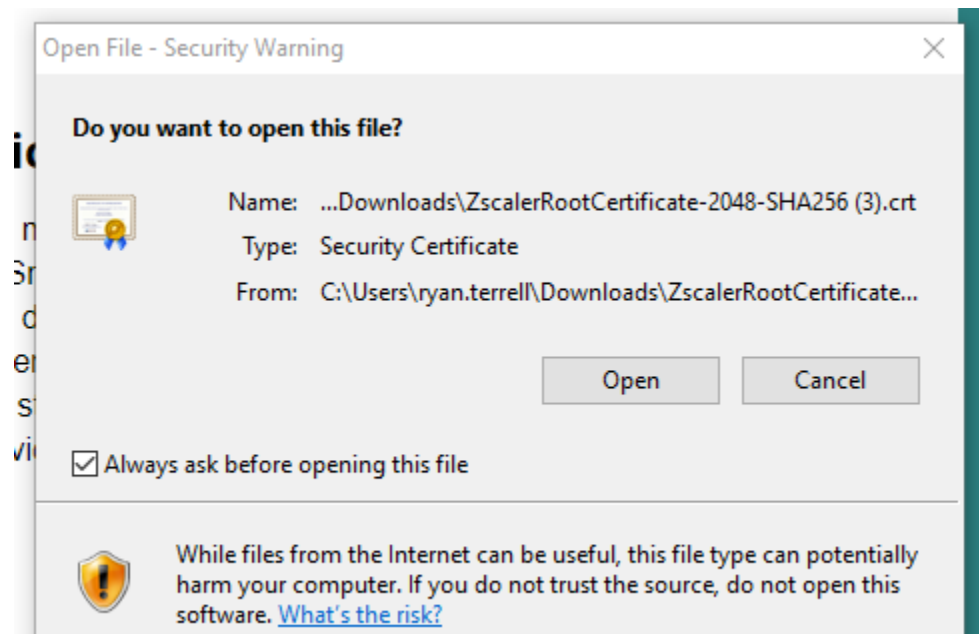
1. Click [here](#) to download the certificate.
2. You will most likely get a security warning about the file, click on “Keep”



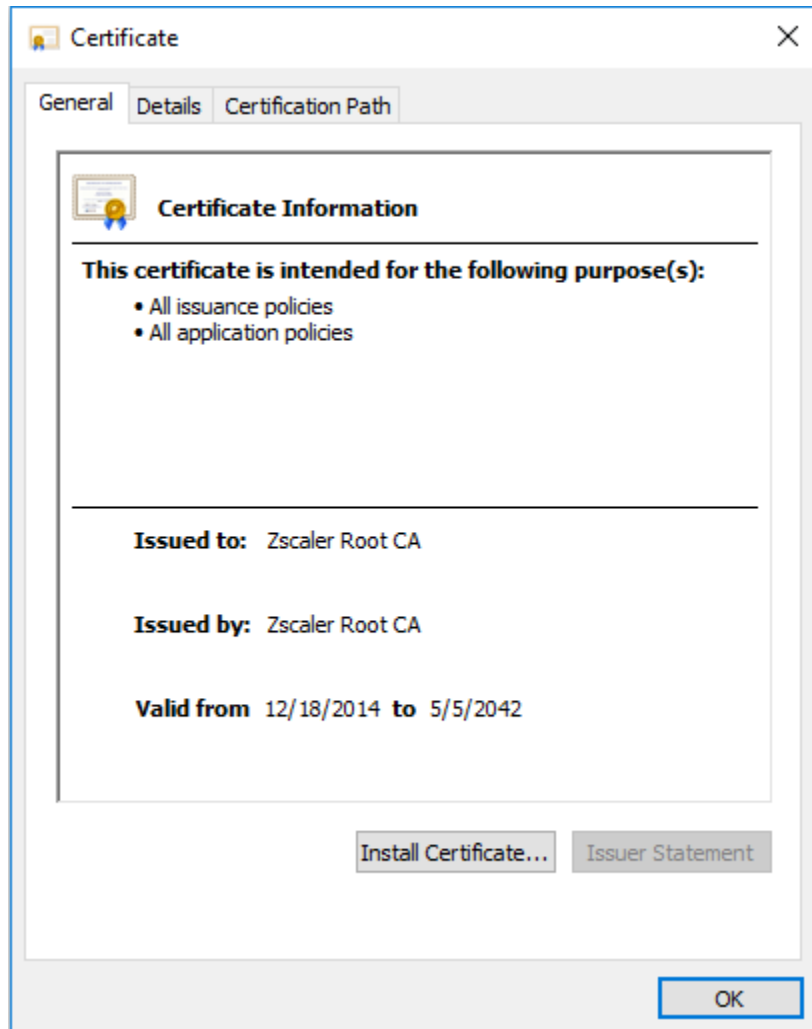
3. Click on the file you just downloaded to open it.



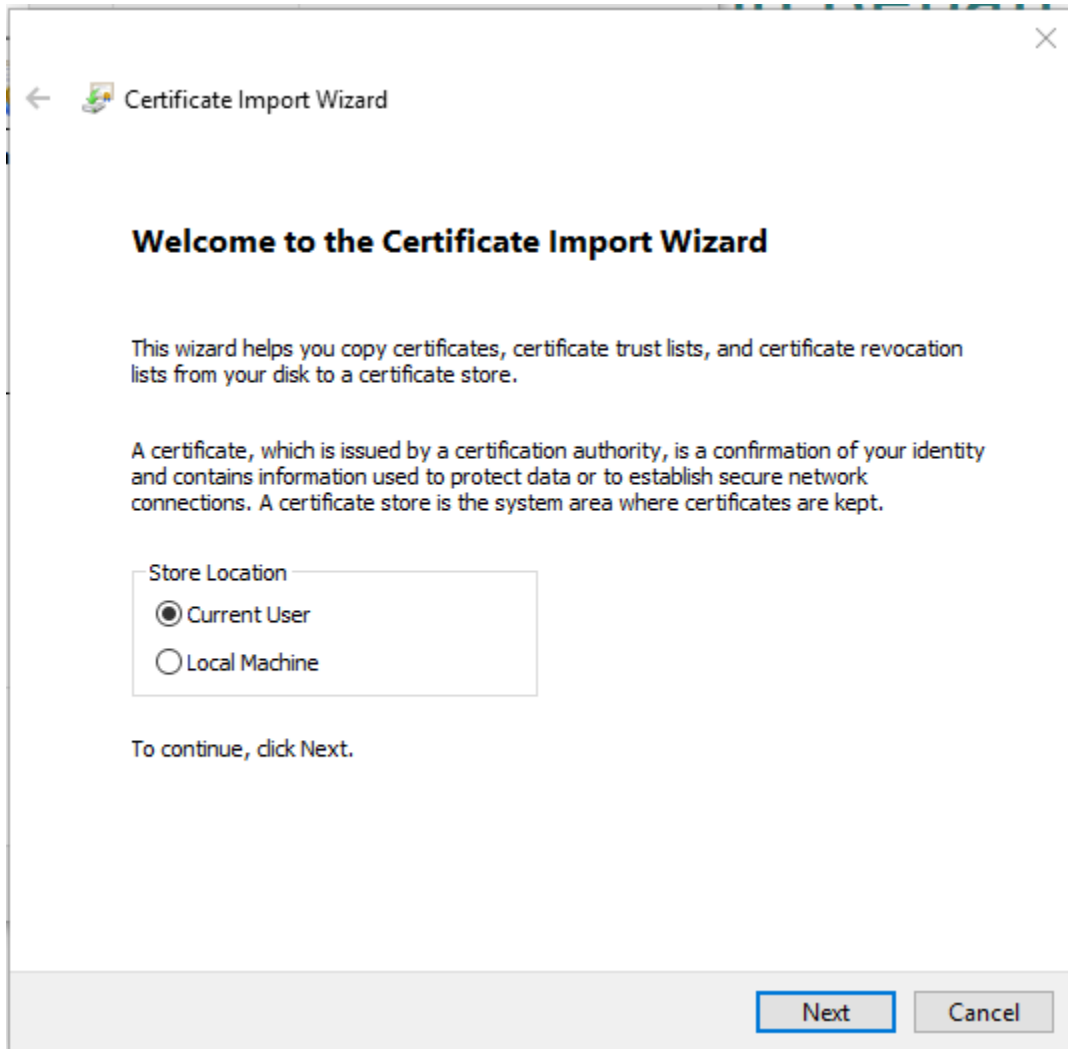
4. Click on “Open” when prompted with the following Security Warning.



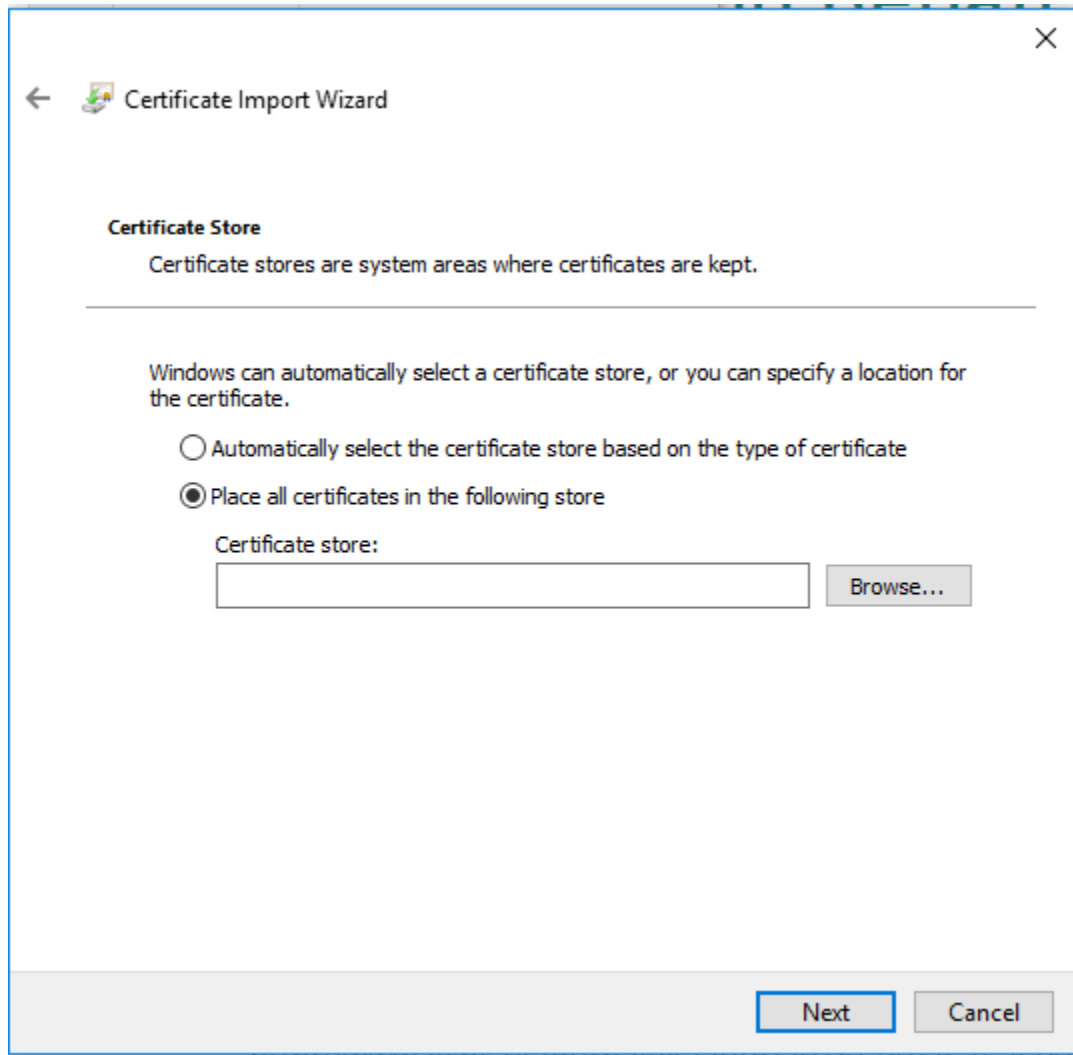
5. Click on “Install Certificate”



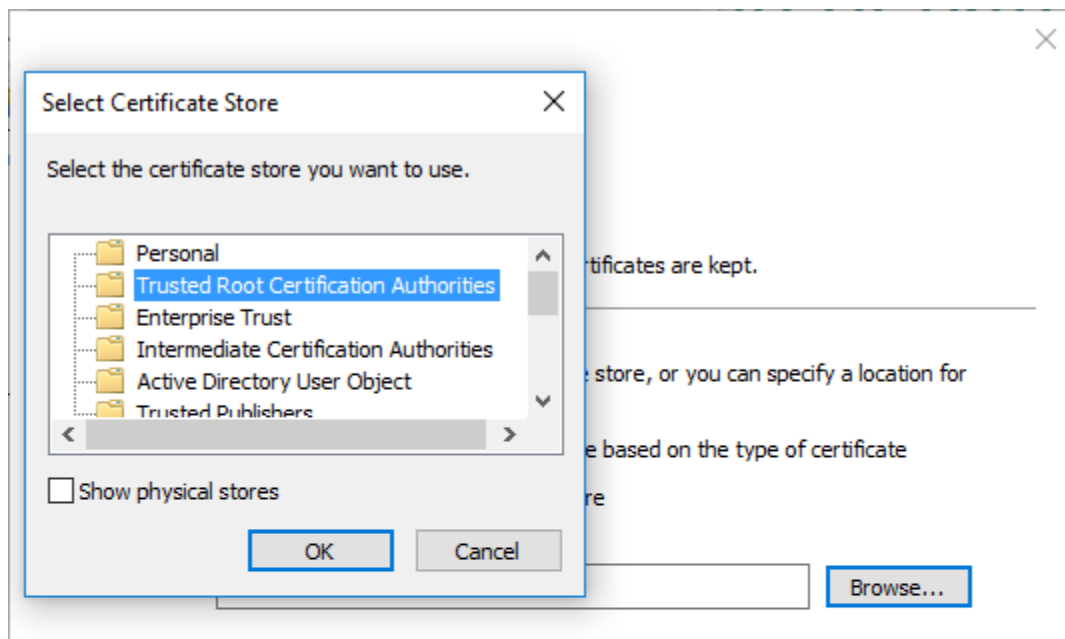
6. Keep the default settings and click on next.



7. Select the “Place all certificates in the following store” option and then click on the “Browse...” button.



8. Select the “Trusted Root Certification Authorities” option, and then click “OK”. Click on “Next” to proceed to the next screen.



9. Click on "Finish" and a message telling you the import was successful should appear. Click "OK" on the message, and then "OK" on the Certificate Information window and the certificate should now be installed.

