



# Define and Approve Two Wellness Center Projects



*Bond Oversight Committee Meeting  
November 2, 2023*

# Background- Wellness Centers

- The Wellness Initiative is built upon LAUSD's history of supporting student health
- **What is a Wellness Center?**
  - **Comprehensive health care:** Physical health; Mental health; Dental health; Youth engagement, health education and career pathways
  - **Open to families and school community:** Separate entrances/waiting
- **Why do we have Wellness Centers?**
  - **Partnerships** with community clinics and non-profit providers to offer services that District is unable to provide (e.g.- dental)
  - **School-based services:** Convenient, trusted care without leaving school campus. Serves students, families, and communities
  - **Student Advisory Board:** Provide a pipeline for students to engage in health careers and advocacy



# LAUSD Wellness Phase 1, 2, 3 Milestones

*Strategic Plan for School Health Centers in High Priority Areas, 2009*

**Phase 1- BOE designated \$28M, 2009**

**Phase 2- BOE designated \$50M, 2014**

*Wellness Phase 2 - Strategic Framework, 2015*

**Phase 3- BOE designated \$50M, 2021**

*Wellness Phase 3 - Framework for Implementation, 2022*

2009

2015

2021

## 14 Wellness Centers

### **Phase 1**

Belmont HS WC  
Carson HS WC  
Crenshaw HS WC  
Elizabeth LC WC  
Fremont HS WC  
Garfield HS WC  
Gage MS WC  
Hollywood HS WC  
Jefferson HS WC  
Jordan HS WC  
Locke EEC WC  
Manual Arts HS WC  
Monroe HS WC  
Washington Prep WC

## 11 Wellness Centers

### **Phase 2**

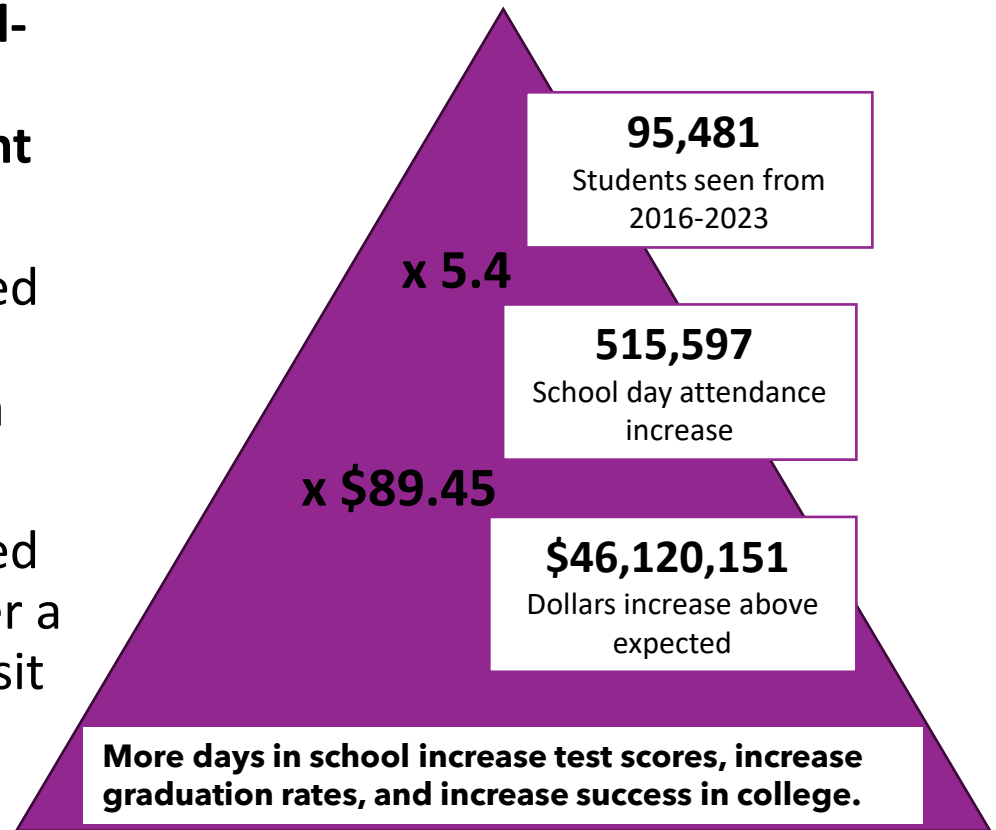
Balboa Complex WC  
Drew MS WC  
Fremont HS WC expansion  
Holmes ES WC expansion  
Jefferson HS WC expansion  
Maclay MS WC  
Manual Arts WC expansion  
Mendez HS WC  
Santee HS WC  
YES Academy/Hyde Park ES WC  
Telfair ES WC expansion

Bond-Funded  
Wellness  
Centers (WC)  
completed

# LAUSD Wellness Centers Increase Attendance

Lim, C., et al. School Attendance Following Receipt of Care From a School-Based Health Center. J. of Adol. Health. Sept 12, 2023.

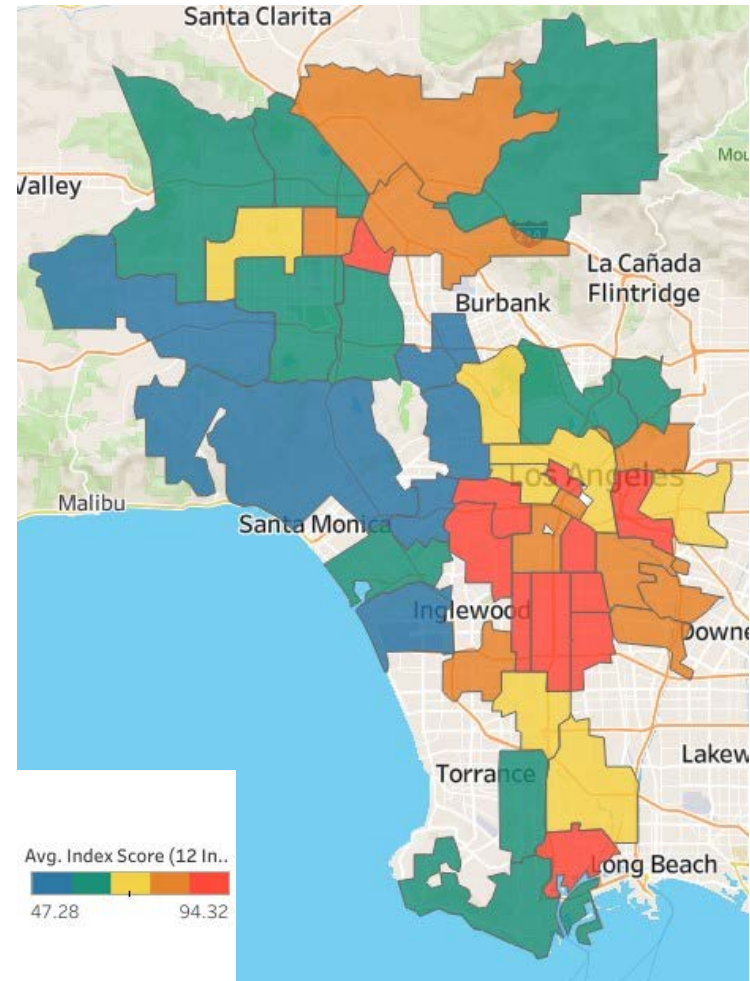
- **After the first visit to a school-based health center, the proportion of full days present increased over time.**
- Students' attendance increased by **5.4 school days** per year following any type of visit to a school-based health center.
- Students' attendance increased by **7 school days** per year after a school-based health center visit for a mental health diagnosis



# Site Selection

## Need Analysis- Wellness Index

- Built upon previous phases' needs assessment indicators
- New Wellness indicators (11) were combined to create a Wellness Index Score for each HS/cluster
  - Higher student need = High Index score (red)
  - Lower student need = Low score (blue)
- 11 health and social indicators of students
  - Asthma, Chlamydia, Birth rate
  - Fitness, Overweight, Chronic conditions
  - Mental Health, Poverty, Health Insurance



# Site Selection

## Resource Analysis-

- Avoid duplication of services
- Assess existing services for students
  - Wellness Centers
  - School-based health centers
  - Mental Health clinics
- Determined three highest need (red) areas with no existing WC
  - Panorama City
  - Wilmington
  - LA Mid-city

Target areas

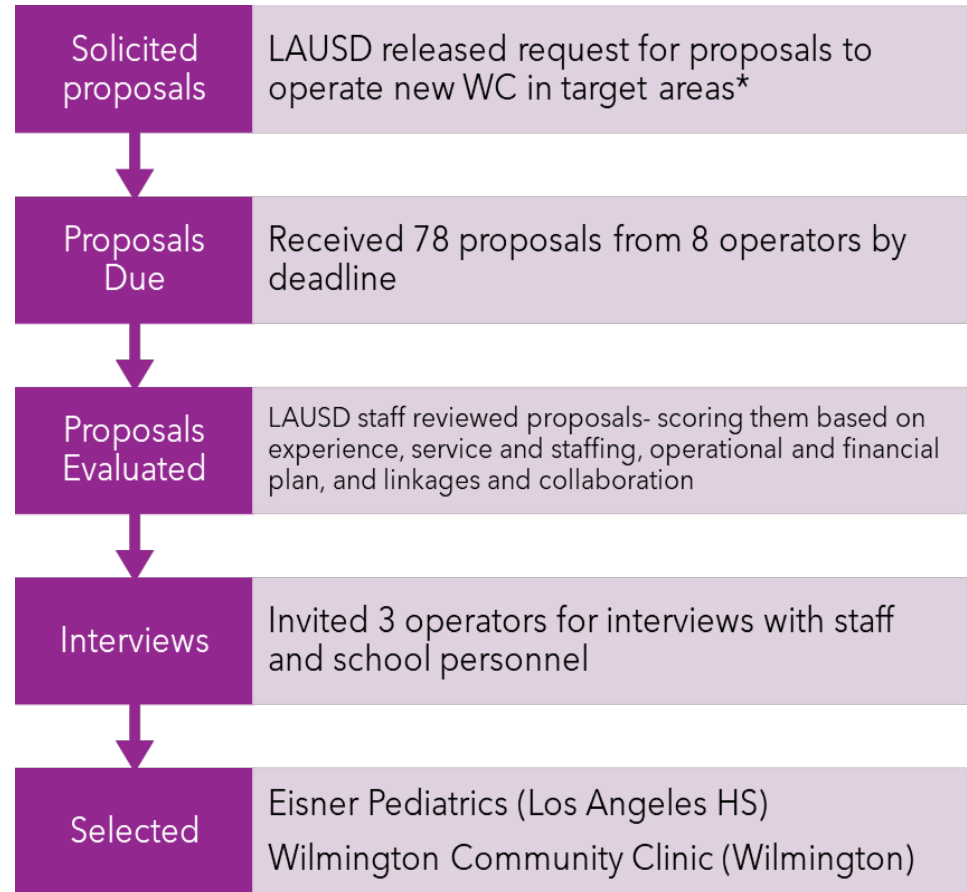
## Need and Resource Analysis

Index rank	School cluster	Wellness Center
1	Jefferson/So Cntrl East	Jefferson HS (expansion)
2	Fremont CoS	Fremont HS (dental)
3	Achievement Network	Locke EEC
4	Rivera CoS	Jordan HS & Drew MS
5	Washington CoS	Washington Prep
6	Crenshaw/Dorsey CoS	Crenshaw HS & Yes Academy
7	Boyle Heights CoS	Roosevelt & Mendez
8	Panorama City CoS	
9	Wilmington CoS	
10	LA Mid-City CoS	
11	MacArthur Pk CoS	Belmont HS



# Provider Selection

*Successful operators of Wellness Centers are non-profit Federally Qualified Health Centers (FQHCs). Operators must be able to provide comprehensive services to students (regardless of their ability to pay) and have a successful track-record of health care delivery in schools and community.*



\* Panorama City HS has existing LAUSD-operated clinic. District to provide facility improvement utilizing non-bond funding

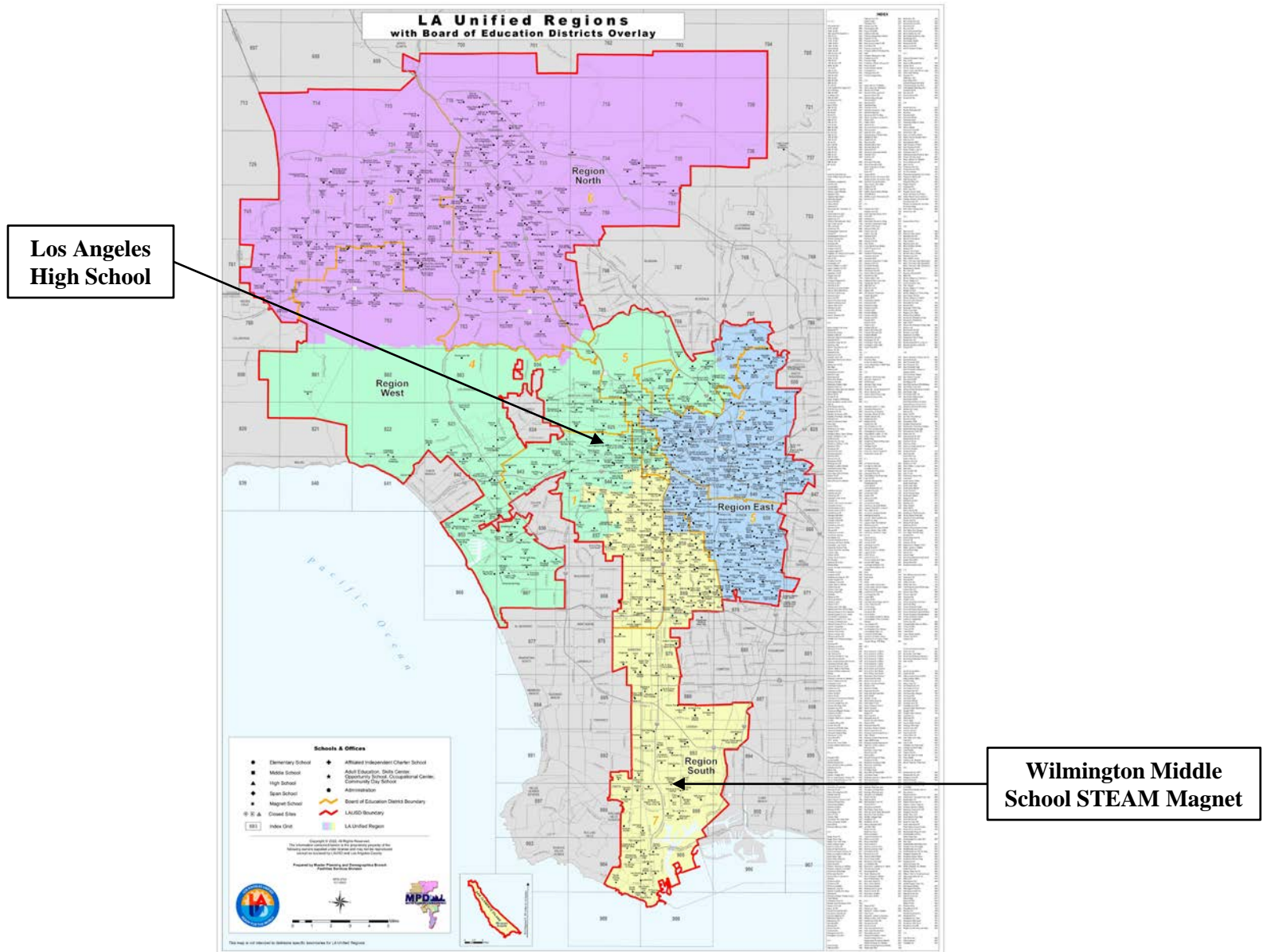
# Wellness Program Background & Prioritization

---

- The updated School Upgrade Program (SUP) framework and the Measure RR Implementation Plan help guide the identification of sites and development of project proposals, which reflect the goals of and priorities for Measure RR.
- The Board of Education prioritized funding within the SUP to develop new school-based wellness centers and/or expand existing wellness centers in areas identified to have the highest need for healthcare facilities determined by various health risk indicators.
  - New wellness center projects fall under the SUP category of need for School Upgrades and Reconfigurations to Support Wellness, Health, Athletics, Learning, and Efficiency (WHALE).
- School-based wellness clinics were specifically authorized as a project type in the Measure RR bond language
- Our legal counsel has reviewed the IRS rules as it relates to privately operated health care facilities and has determined that the District is compliant with the Revenue Procedures



# Project Location Map



# Los Angeles High School Wellness Center

## *Region West, Board District 1 (Dr. George J. McKenna)*

### **Project Scope**

- The design and construction of a new wellness center building that is approximately 6,000 square feet and includes medical, dental, and mental health facilities that are furnished with furniture and equipment.
- Associated site improvements, including a parking lot, fencing, gates, landscape, hardscape, and infrastructure upgrades.
- The demolition of seven relocatable buildings.
- The replacement of the existing natural grass play field impacted by the new wellness center development with a new natural grass play field.
- Improvements to ensure compliance with local, state, and federal requirements including from the Americans with Disabilities Act (ADA), Division of the State Architect (DSA), California Environmental Quality Act (CEQA), and Department of Toxic Substances Control (DTSC).

The healthcare provider, Eisner Health, would operate the new wellness center and provide comprehensive medical, dental, and mental health services to students, families and community members.

### **Project Budget**

- \$23,700,000

### **Anticipated Construction Schedule**

- Construction Start: Q2-2026
- Construction Completion: Q2-2028





# Wilmington Middle School STEAM Magnet Wellness Center

*Region South, Board District 7 (Tanya Ortiz Franklin)*

## Project Scope

- The design and construction of a new wellness center building that is approximately 6,000 square feet and includes medical, dental, and mental health facilities that are furnished with furniture and equipment.
- Associated site improvements, including a parking lot, fencing, gates, landscape, hardscape, and infrastructure upgrades.
- Removal and replacement of landscaped areas displaced by the clinic
- Improvements to ensure compliance with local, state, and federal requirements including from the Americans with Disabilities Act (ADA), Division of the State Architect (DSA), California Environmental Quality Act (CEQA), and Department of Toxic Substances Control (DTSC).

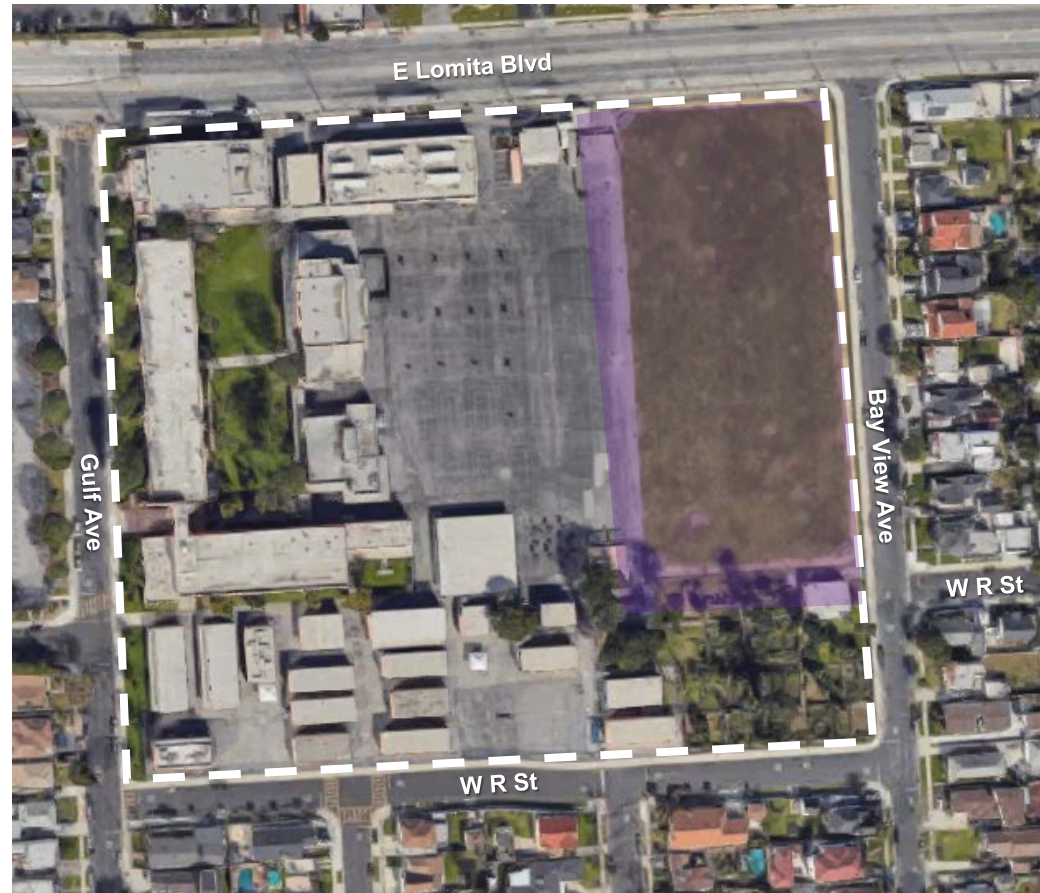
The healthcare provider, Wilmington Community Clinic, would operate the new wellness center and provide comprehensive medical, dental, and mental health services to students, families, and community members.

## Project Budget

- \$21,300,000

## Anticipated Construction Schedule

- Construction Start: Q2-2026
- Construction Completion: Q2-2028



---

# Questions ?