



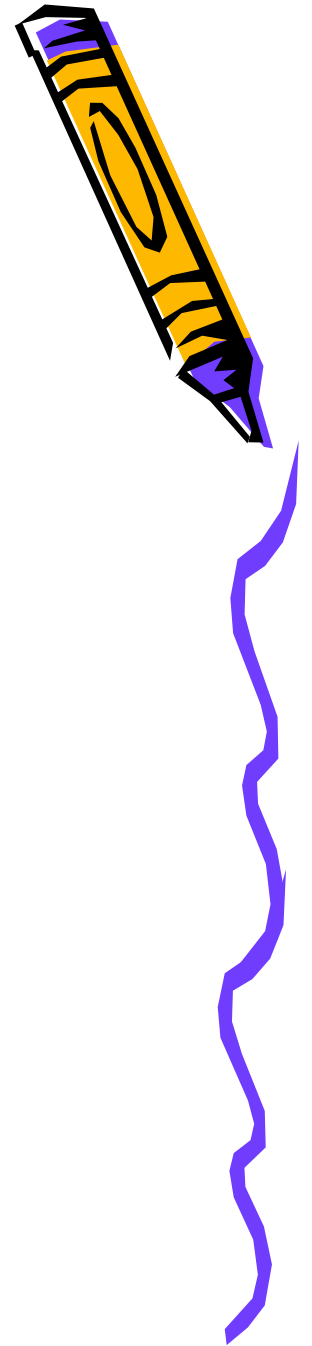
Overview of LAUSD Enrollment: History, Trends and Projections

LAUSD School Construction Bond Citizens' Oversight Committee
By Facilities Division, Master Planning and Demographics

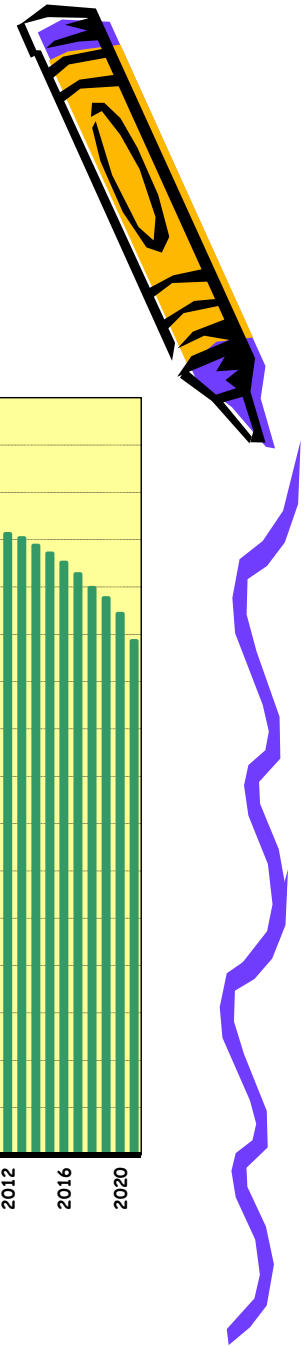
January 6, 2022

More Than Just Numbers

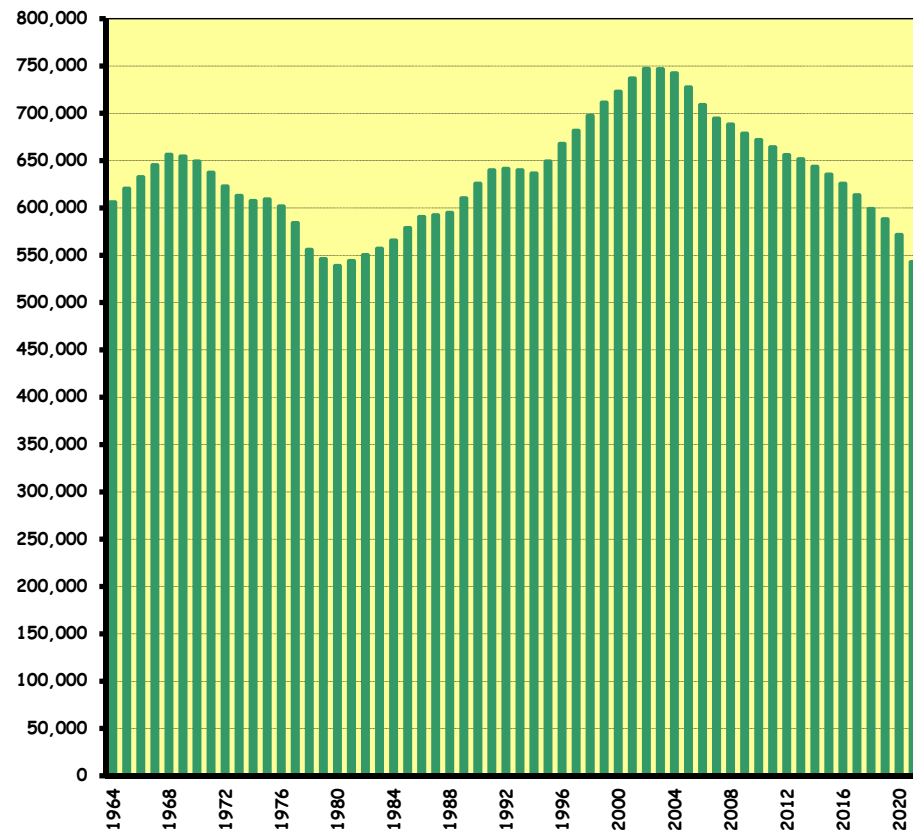
- ❑ Enrollment history
- ❑ Dynamics of enrollment change
- ❑ Projecting enrollment
- ❑ Enrollment forecasts
- ❑ Analyzing Enrollment Trends
- ❑ Looking forward



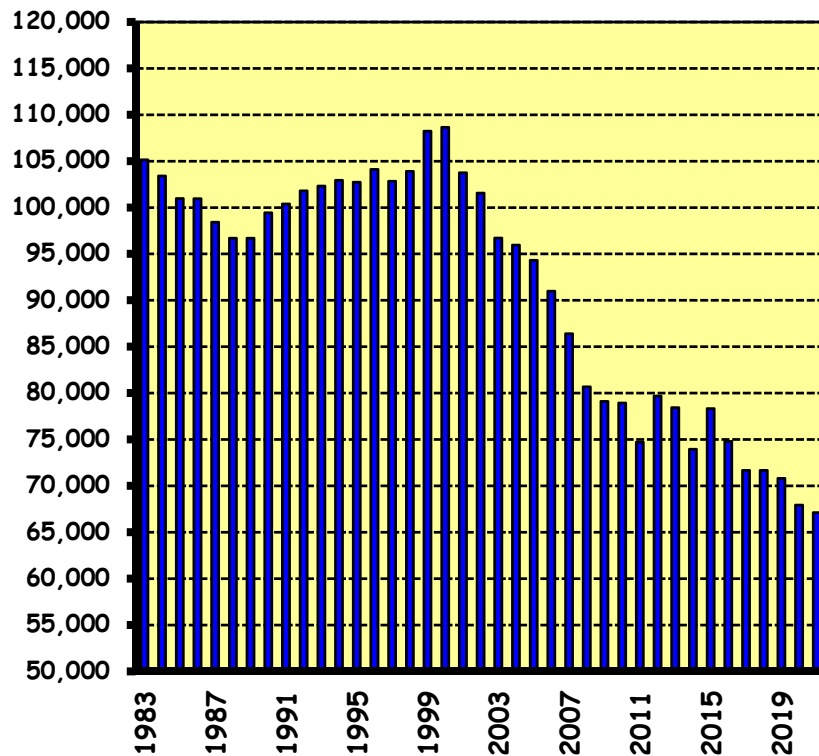
K-12 ENROLLMENT 1964-65 TO 2021-22



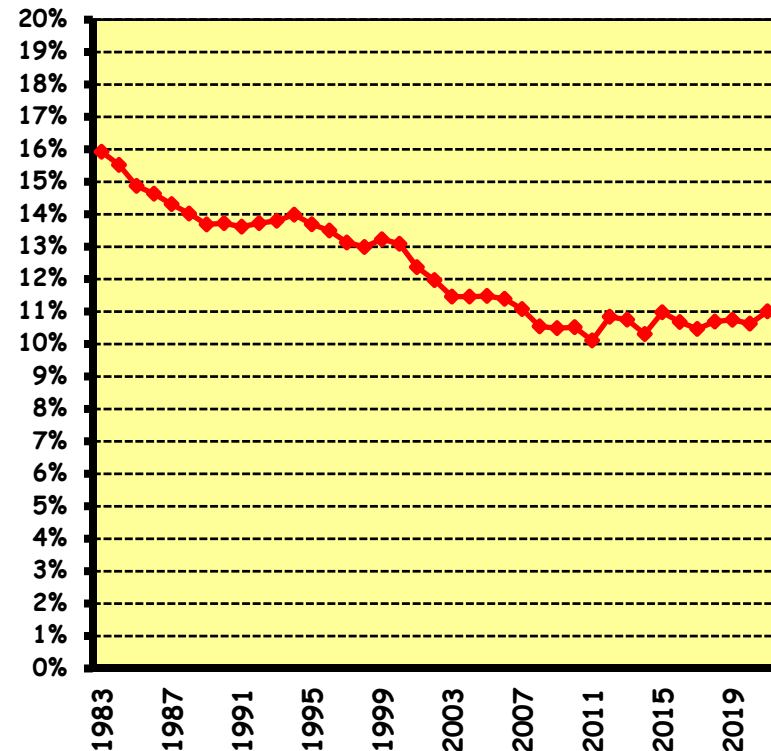
- ❑ Post WWII housing and baby boom > growth to 1968
- ❑ Growth in outer suburbs, Sylmar Earthquake, and concerns over forced desegregation > decline from 1968 to 1980
- ❑ Baby boom echo and post Prop 13 new housing > growth 1980 to 2002
 - Immigration reform > plateau 1986 and 1987
 - Civil unrest and Northridge Earthquake > plateau 1992 thru 1994
- ❑ Decline in births began 1990, K enrollment peaked in 1996



PRIVATE SCHOOL ENROLLMENT 1983-84 TO 2021-22

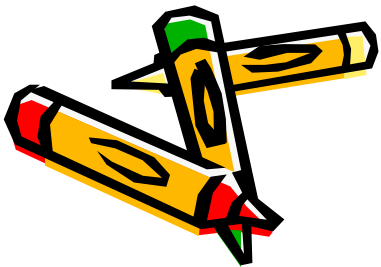


Increases/decreases similar to LAUSD's



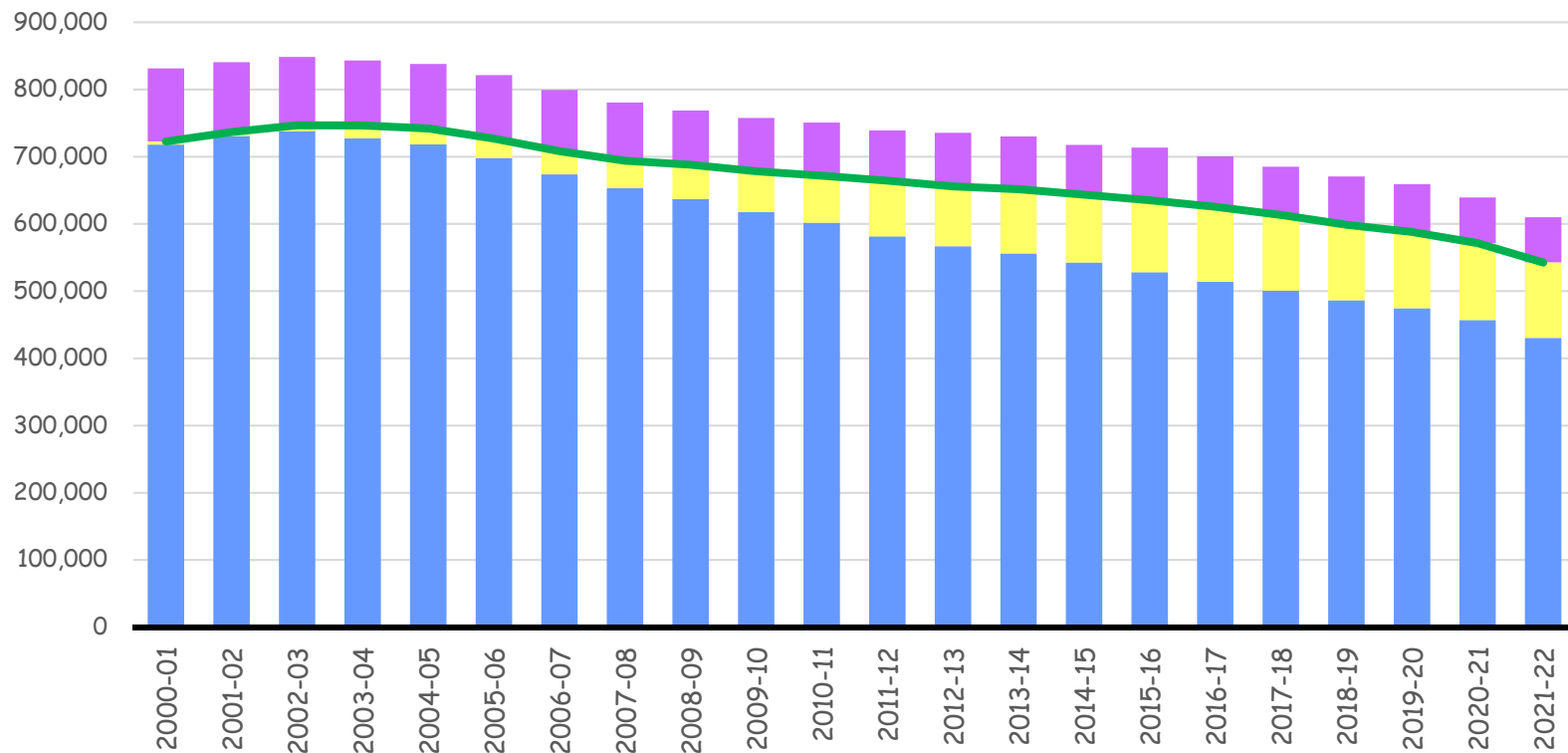
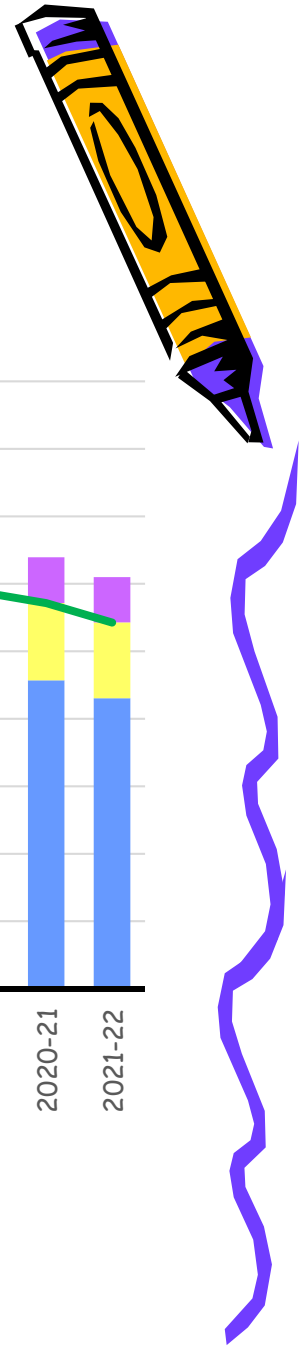
Declining market share within LAUSD

565 schools in 2001; 362 schools in 2021



Source: California Department of Education, private school affidavits

ALL SCHOOLS ENROLLMENT WITHIN LAUSD BOUNDARY



- Private Schools
- Independent Charter Schools
- Traditional LAUSD and Affiliated Charter Schools
- Combined Total For Public Schools

January 2022

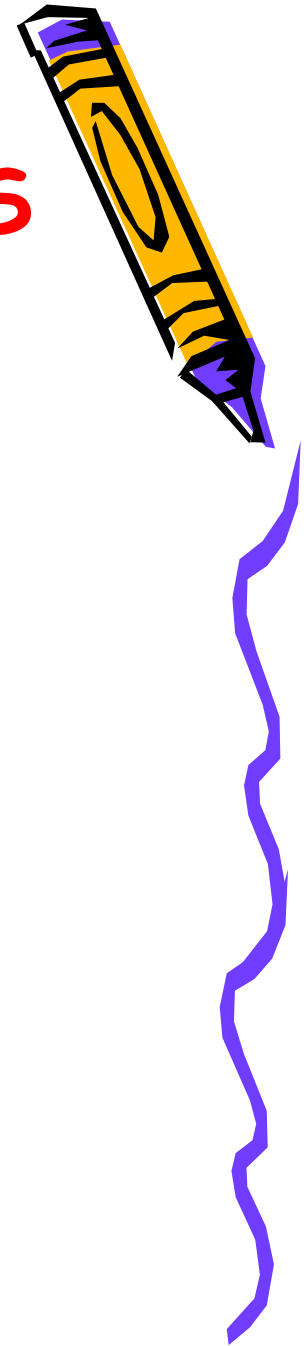
DYNAMICS OF CHANGE



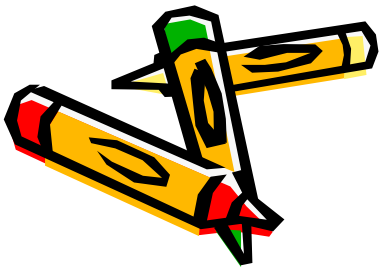
- ❑ **Incoming group**
 - Births in general population
 - Kindergarten in enrollment
- ❑ **Outgoing group**
 - Deaths in general population
 - 12th grade/graduates in enrollment
- ❑ **Incoming minus Outgoing = Natural Increase**
- ❑ **Fluctuation in core group = Net Change**
 - Difference of in/out migration in general population
 - Grade to grade retention in enrollment
- ❑ **Natural Increase + Net Change = Overall Change**



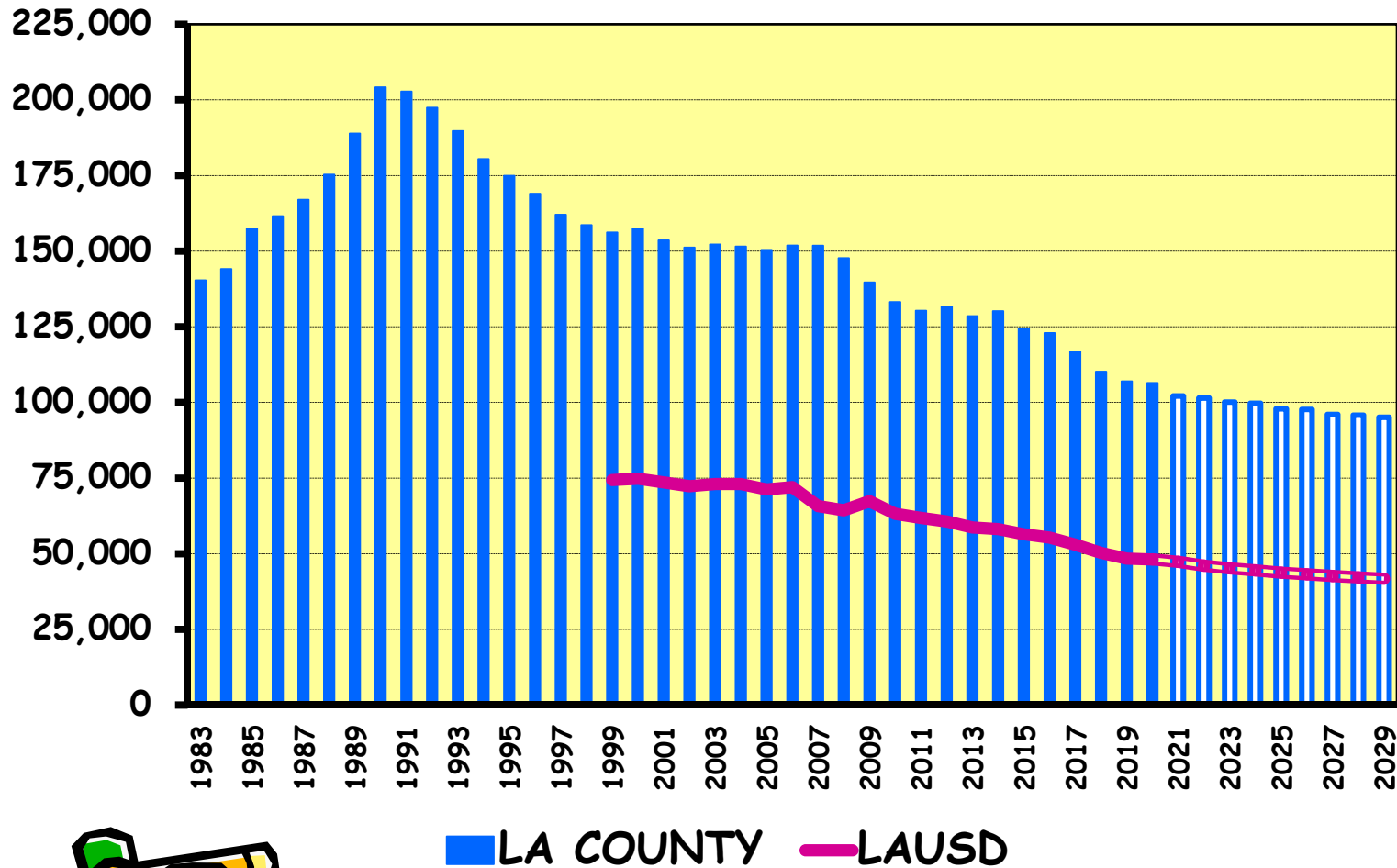
ENROLLMENT PROJECTIONS: ANALYSIS AND ASSUMPTIONS



- ❑ **Births in LAUSD and LA County**
 - Used to develop forecasts for TK and Kindergarten enrollment
- ❑ **Cohort Survival Rates**
 - Statistics showing the percentage of students who progress from one grade to another within LAUSD
- ❑ **Factors considered in projection modeling**
 - Migration and immigration
 - New housing development
 - Ethnic shifts
 - Health of the economy

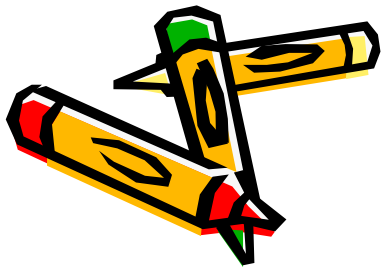
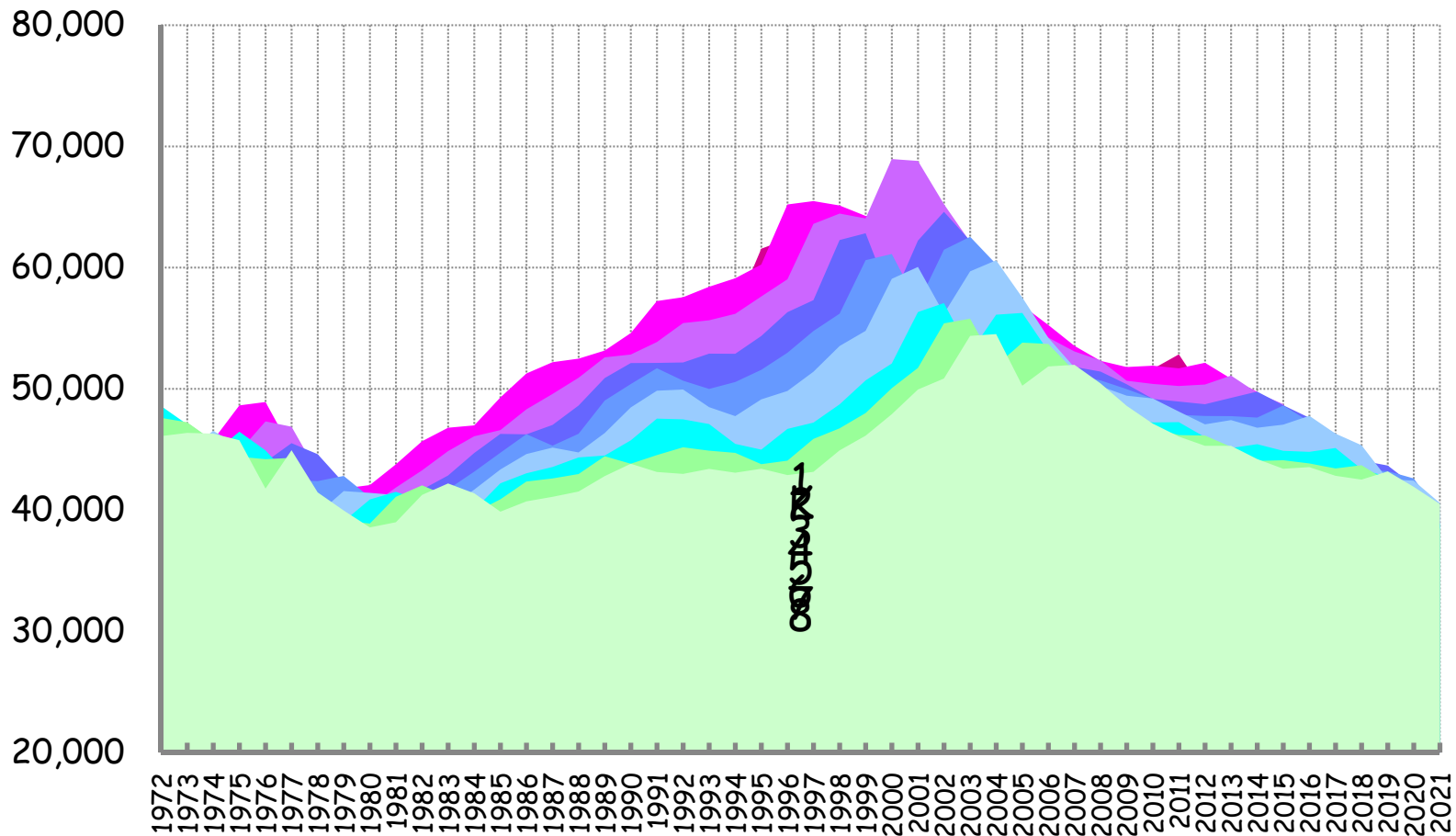
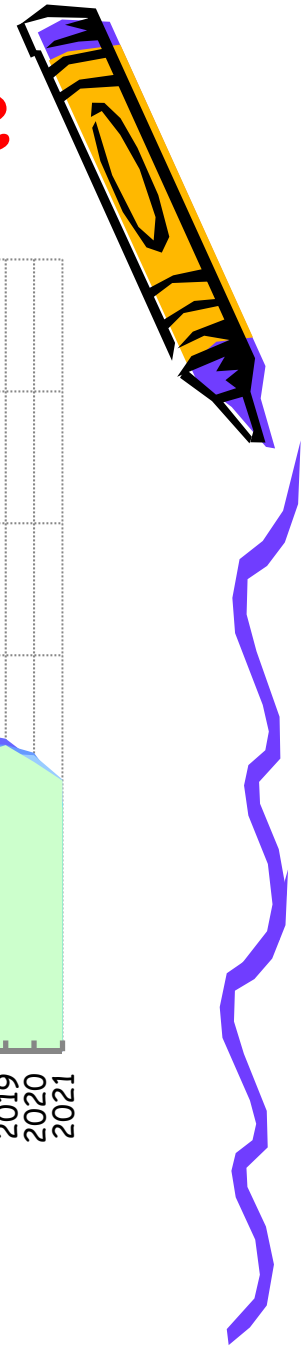


BIRTHS LA COUNTY & LAUSD



Sources: Actual births thru 2014, CA Dept. of Health Services, Ctr. for Health Statistics. Projected births: CA Dept of Finance, Demographic Research Unit.

Enrollment Change by Grade

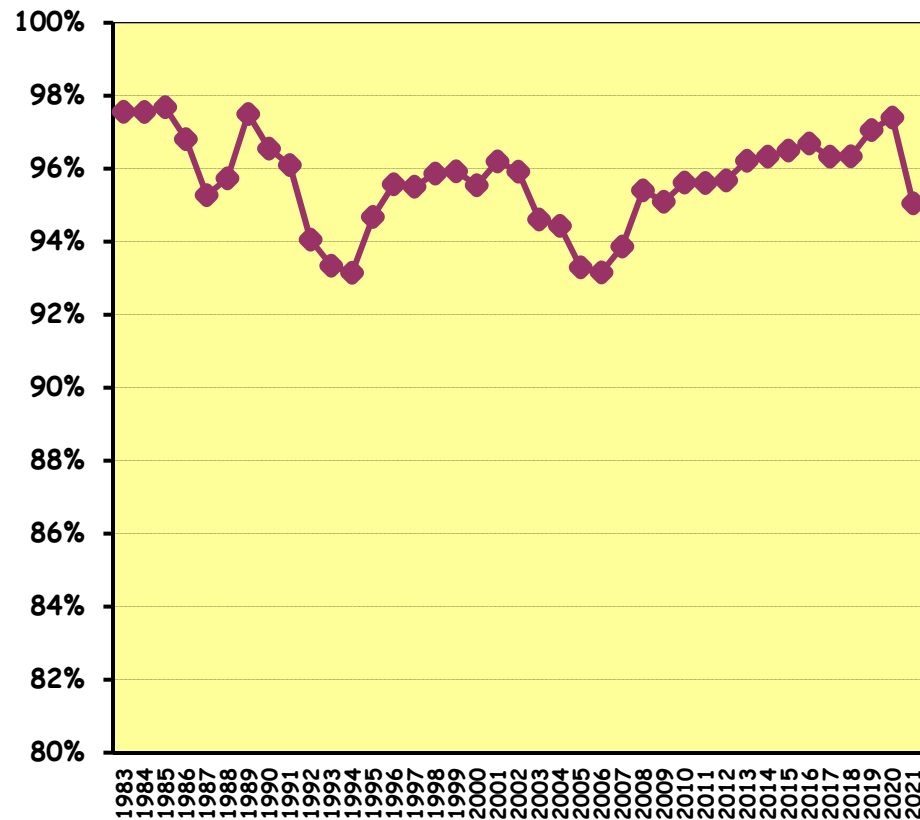


■ K
 ■ 1
 ■ 2
 ■ 3
 ■ 4
 ■ 5
 ■ 6
 ■ 7
 ■ 8

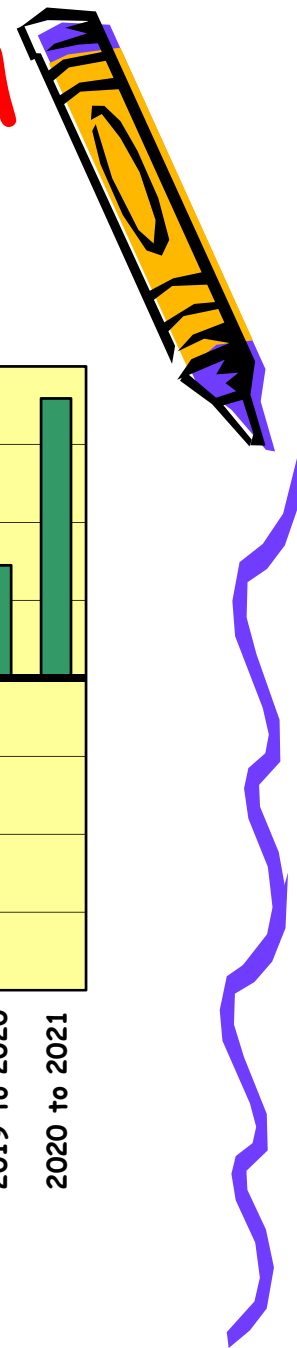
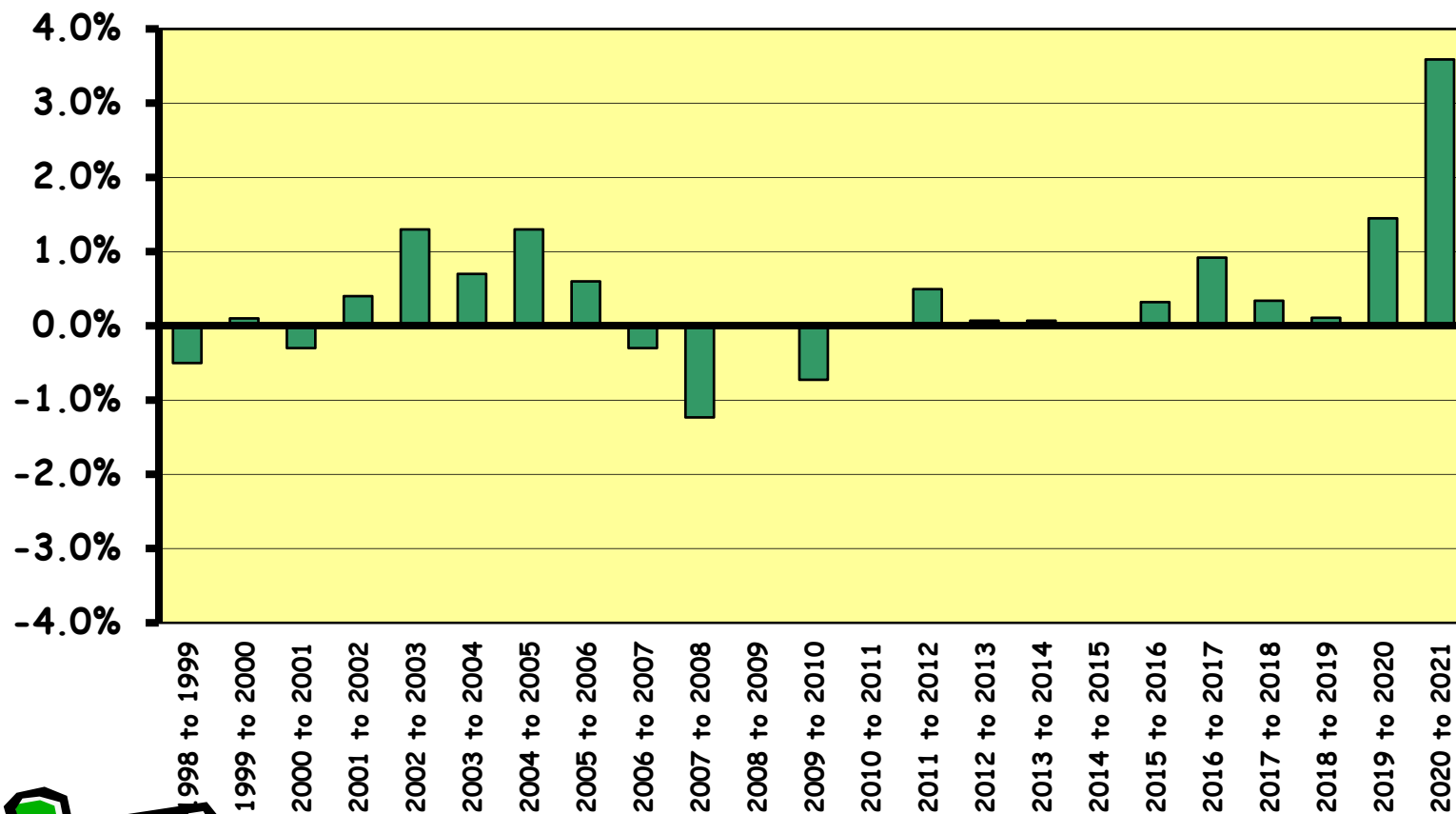
COHORT SURVIVAL RATES 1 YEAR CHANGE GRADES 1-11 TO 2-12



- ❑ Cohort Survival - the rate at which a defined group continues over time
- ❑ Graph shows a global rate for students that continued from one year to the next
- ❑ Ups and downs of rate mirror changes seen in enrollment graph



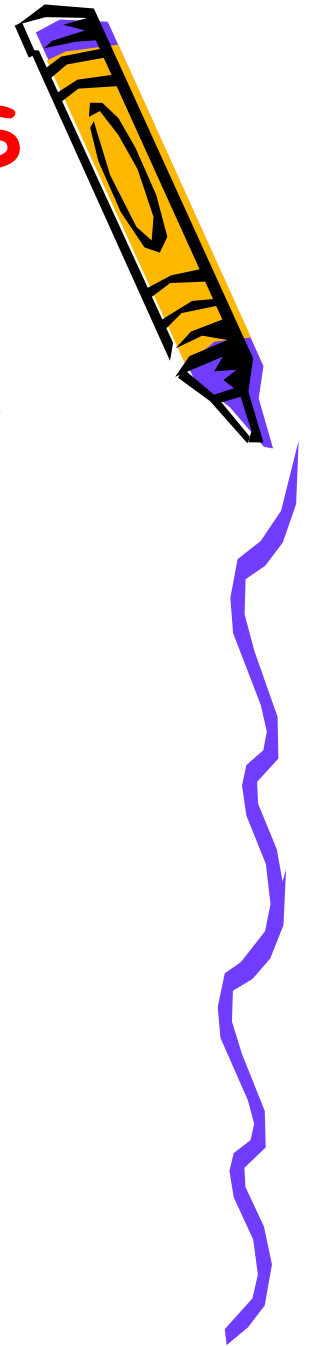
ACCURACY OF SHORT-TERM K-12 PROJECTIONS



ANALYZING ENROLLMENT TRENDS BIG AND SMALL

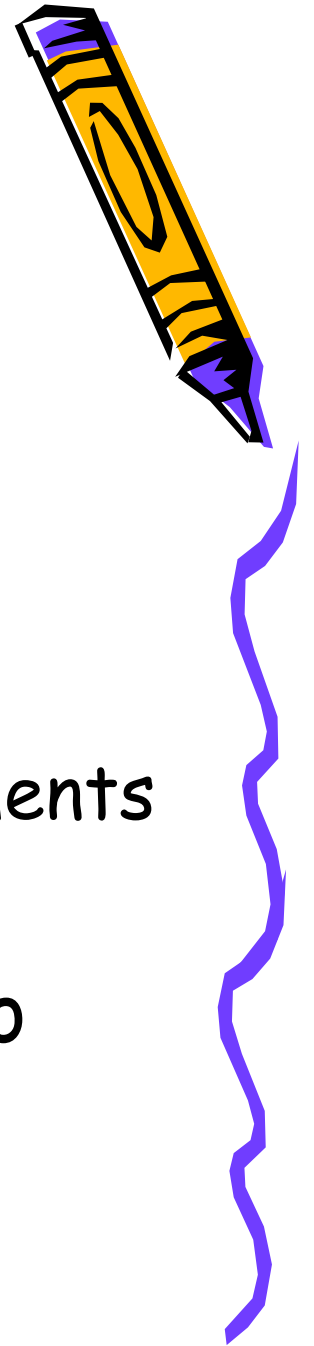
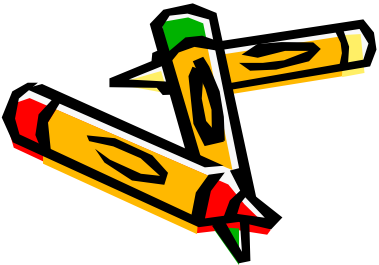
- ❑ Big Trends That Affect The District At Large
 - General population changes
 - Areas of development and redevelopment
 - Policy changes

- ❑ Small Trends That Affect Individual Schools
 - School-by-school resident area enrollments
 - Assess cause for growth - resident vs non-resident
 - Impacts of new programs

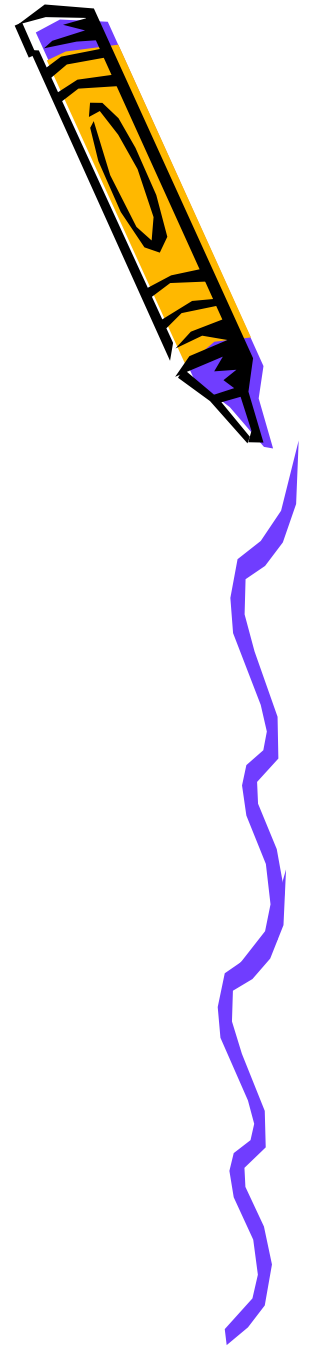


Looking Forward

- ❑ Sustainment of promise of single-track, neighborhood schools
 - Track enrollments
 - Assess utilization of classrooms
 - Review options for boundary adjustments
- ❑ Modernization planning includes assessments of schools' abilities to meet future enrollment demands



QUESTIONS AND DISCUSSION



January 2022