



The What, Why and How Of Parent Engagement To Support 100% Graduation For All Students

February 18,
2016

Presented by Rowena Lagrosa
Chief Executive Officer
Parent, Community and Student Services





DISTRICT GOALS

1. 100 percent graduation
2. Proficiency for all
3. 100 percent attendance
4. Parent and community engagement
5. School safety

*Completion of
A-G
Requirements*

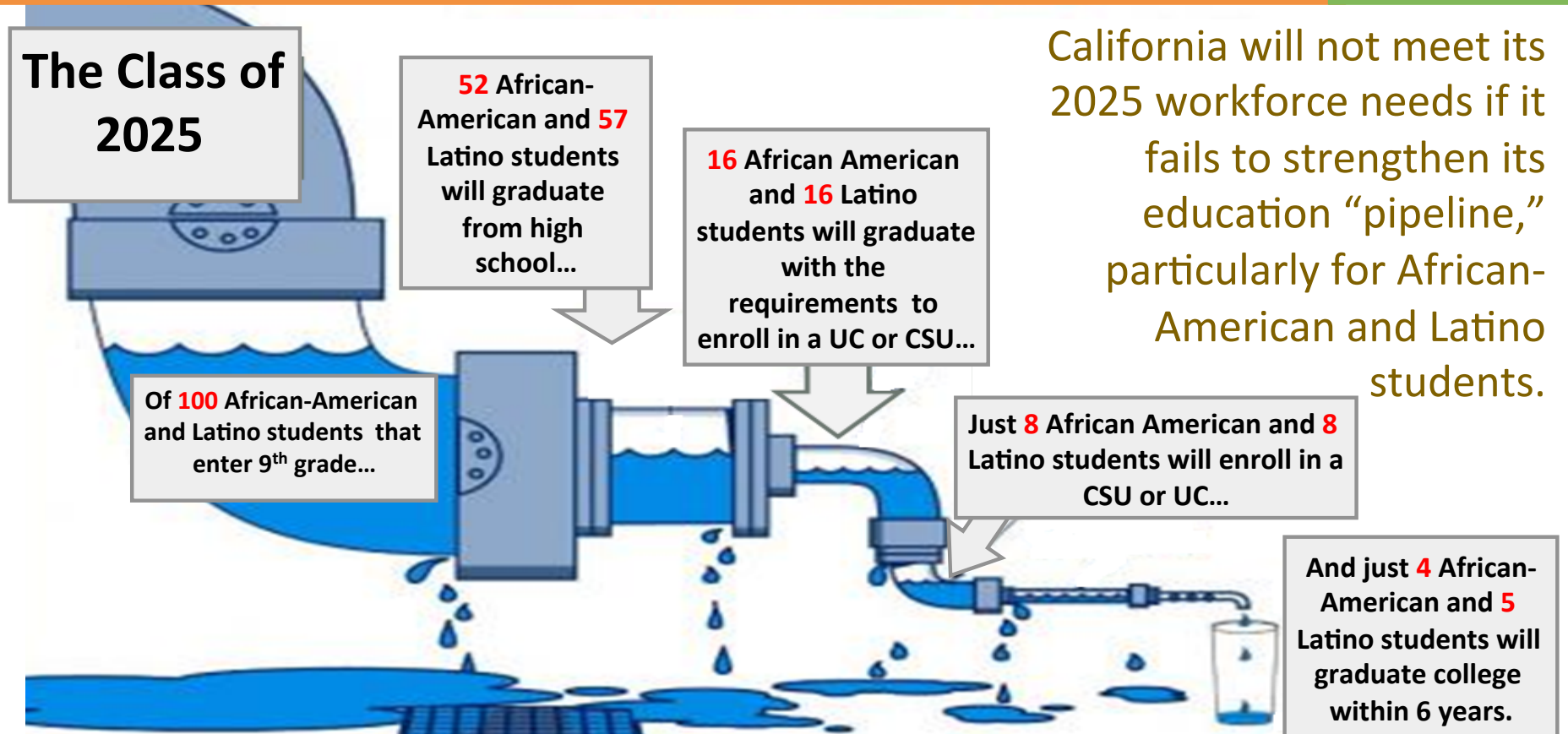
*Proficiency
in A-G
Courses*

*The A-G
Catalysts*



Why is parent engagement
important in elementary, middle
and high school?

PARTNERSHIP TO STRENGTHEN THE PIPELINE



UCLA Institute for Democracy, Education and Access, 2011
Chronicle of Higher Education, 2010



BUILDING THE COLLEGE PIPELINE

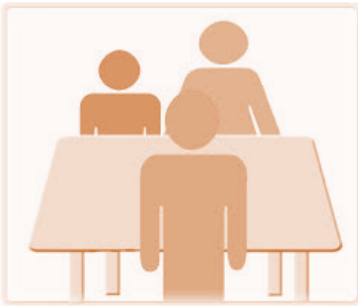


College readiness begins in pre-school with families engaged in the systems of learning. If families are engaged, students of all ages and backgrounds tend to:

- **Earn higher grades and test scores**
- **Enroll in higher-level programs**
- **Be promoted and earn credits**
- **Adapt well to school and attend regularly**
- **Have better social skills and behavior**
- **Graduate and go on to higher education**



IMPACT OF SYSTEMIC PARENT ENGAGEMENT



Students' reading and math scores improved 40-50% faster when teachers:

- **Met with families face-to-face**
- **Sent materials to parents providing strategies to help their child at home**
- **Telephoned routinely about progress**

Westat and Policy Studies Associates



THE REALITY TODAY



Parents have choices.

- From 2005/2006 to 2014/2015, LAUSD enrollment has decreased by 156,000 students.
- More than ever, our work is one that must be customer-service driven, welcoming a partnership with the families that we serve.



IN SUMMARY...

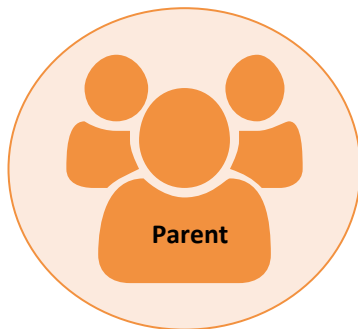
When families are engaged at home and at school, children do better in school *and* schools get better, pre-K through high school.

These home/school partnerships increase opportunities for successful completion of A-G requirements and for access to colleges and universities.





KEY TEAM PARTNERS





How does the Parent, Community
and Student Services (PCSS) office
help accomplish LAUSD's goals for
parent engagement?



2015-2016 FOCUS AREAS

Parent, Community and Student Services

2015-2016 FOCUS AREAS

Parent Training
Modules

English Learner
Master Plan Parent
Training

School Quality
Improvement Index (SQII)
Stakeholder Engagement

Parent Access Support
System portal
(PASSport)

Parent Support for
Instructional
Programs

Parent and Family
Center Staff Training/
Bond Project

Local Control and
Accountability Plan (LCAP)
Stakeholder Engagement
and Accountabilities

LAUSD Volunteer
Program

Professional
Development for
School Staff

School Site Council/
English Learner
Advisory Committee

Community Outreach/
Partnerships

Student Engagement

Partnership Action
Teams

Title I Study Groups

Parent Advisory Committee/Community Advisory Committee/District English Learner Advisory Committee



PARENT, COMMUNITY AND STUDENT ENGAGEMENT IN THE LCAP

State Priority and LAUSD Goal 4





SCHOOL EXPERIENCE SURVEY AND SCHOOL REPORT CARD

Improving parent
feedback and survey
participation



Providing extra support to schools
with low completion rates

LOS ANGELES UNIFIED SCHOOL DISTRICT
SCHOOL REPORT CARD
2014-2015

Table of Contents

- 1 Graduation
- 2 Proficiency for All Students
- 3 Student Demographics
- 4 Attendance
- 5 Parent, Student & Community Engagement
- 6 School Safety
- 7 Get Involved

Dear Parent or Guardian,
I am proud to offer the 2014-2015 School Report Card. It shows how well our schools and students are meeting the District's goals:

- ✓ 100% Graduation
- ✓ Proficiency for All Students
- ✓ 100% Attendance
- ✓ Parent, Community and Student Engagement
- ✓ School Safety

The School Report Card also has resources you can use to stay informed and involved in your school community. This booklet has facts from many sources including what you told us in the School Experience Survey. This year it also includes school-level metrics from the LAUSD Local Control and Accountability Plan, which measures progress for three student subgroups across multiple performance indicators. These subgroups are English learners, socioeconomically disadvantaged students and foster youth.

The School Report Card helps us to direct our attention, efforts and celebrations. Take the School Report Card to your student's school to discuss with other parents, guardians, and school staff. Please ask questions and make suggestions to your student's principal. You are our partner in the very important work of educating your child.

Ramon C. Cortines
Ramon C. Cortines
Superintendent
213-241-7000

Principal _____
High School Name _____

LOS ANGELES UNIFIED SCHOOL DISTRICT
SCHOOL REPORT CARD
2014-2015
High School

LOS ANGELES UNIFIED SCHOOL DISTRICT
BOARD OF EDUCATION
www.lausd.net

DATA
2014-2015:
INCREASE OF
6% from 34%
to 40% of
LAUSD parents
submitted the
survey



FOUR SCHOOL ACADEMIC PARENT WORKSHOPS

4 required parent workshops at each school-site



DATA

2014-2015

- Baseline:

67% of LAUSD schools provided 4 academic workshops to parents

PCSS MENU

ACTION

REPORT MENU

Parent Workshops

Required Action/Important

Schools are required to certify an Control Funding Formula have been and Accountability Plan on the LA two workshops are mandatory. Other is due on February 26, 2016 given in the Spring and must add May 30, 2016.

> Parent Workshop 1

Topic: Changing Graduation Requirements

Workshop Date 1:

Number of Participants:

LOS ANGELES UNIFIED SCHOOL DISTRICT
PARENT, COMMUNITY AND STUDENT ENGAGEMENT

LAUSD
Graduation Requirements
for the Classes of 2016 - 2019


www.lausd.net


English Learner
MASTER PLAN PART I
2015-2016
Secondary Schools
Identification, Assessment and Instructional Program Options





PARENT AND FAMILY CENTER SUPPORT



Measuring parent center efficacy and support for parents



Parent & Family Center Resource Guide



Parent and family centers are a critical and essential resource in schools to engage parents as partners in their children's education.



PARENT, COMMUNITY AND STUDENT SERVICES



DATA

2014-2015

- 616 Parent and Family Centers
- 115 Renovated into parent classrooms using Bond funds
- Monthly meetings



RESOURCES TO EXPAND ENGAGEMENT

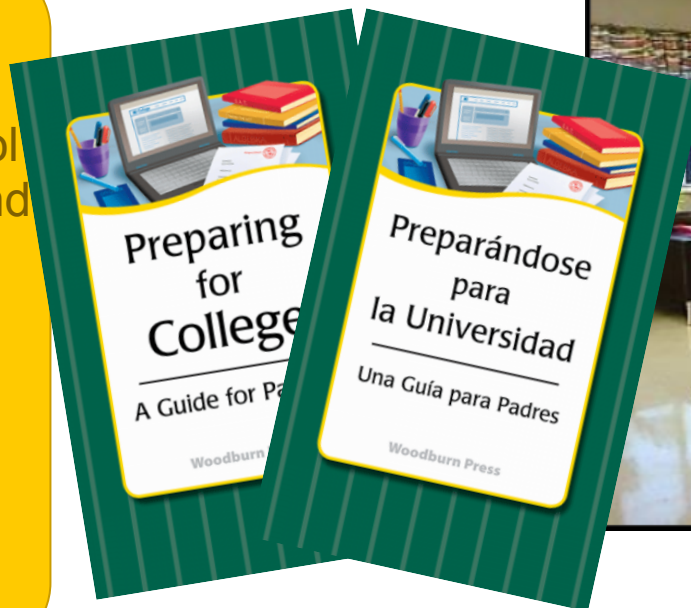


Resources were provided to expand parent and student engagement at school sites

DATA

2014-2015

- Provided school staff training and materials on early education and preparing for college
- PASSport pilot expansion



LAUSD
PASSport



INCREASED STUDENT ENGAGEMENT



Increased student engagement and school connection



DATA

2014-2015

- Establishing Student Member of Board
- First *Young Women of Color* Conference
- Expanding the Village Movement



Who supports LAUSD schools in their efforts to engage parents?



LOCAL DISTRICT PARENT AND COMMUNITY ENGAGEMENT

Local District Northwest (818) 654-3600

- **MARILU PIGLIAPOCO**
- Eric Diaz
- Ritma Estupinan
- Phyllis Spadafora

Local District Northeast (818) 252-5400

- **ANTONIO REVELES**
- Ivet Diaz-Sawyer
- Edwin Lopez
- Claudia Valladarez

Local District West (310) 914-2100

- **TRACI CALHOUN**
- Elsa Barragan
- Marisol Castro
- Edith Perez
- **VACANT**

Local District East (323) 224-3100


- **GILBERTO MARTINEZ**
- Susana Alcala
- Laura Banuelos
- Max Vasquez

Local District South (310) 354-3400

- **THERESA ARREGUIN**
- David Barrett
- Veronica Obregon
- Deborah Siriwardene

Local District Central (213) 241-0100

- **ISMAEL BERVER**
- Gabriel Mendez
- Susan Montano
- Joel Sanchez
- Leticia Vallejo



“ At the end of the day, the most
overwhelming key to a child’s success is
the positive involvement of parents.”

--Jane D.
Hull

CONTACT INFORMATION:

Rowena Lagrosa

213-481-3350

Rowena.Lagrosa@lausd.net