



**Community Advisory Committee  
Office of Student, Family and Community Engagement  
Wednesday, April 22, 2026**

**Greetings, Community Advisory Committee Members,**

Thank you for your continued dedication and active participation. This school year, we had the opportunity to learn and engage in meaningful discussions about the programs and services for students with exceptional needs in our District and Special Education Local Plan Area (SELPA) as part of the SELPA Local Plan. These conversations strengthened our shared understanding of how these plans and resources support students with disabilities and overall student success. Last month, participants in one of our Family Academy sessions explored the purpose and responsibilities of the SSC and ELAC, gaining confidence to actively engage in school advisory and decision-making processes. The workshop, From Awareness to Action: SSC and ELAC, strengthened family-school collaboration to support all students, including students with special needs, and introduced a decision-making tool that leverages data to guide informed choices. You may access the English recording [here](#) and the presentation slides [here](#).

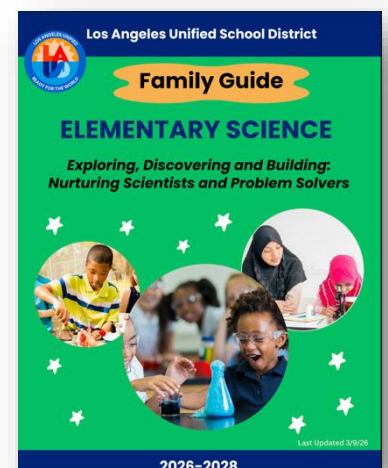
As we move forward, we will begin developing comments for the SELPA that will be submitted to the Superintendent. We deeply appreciate all the work you have contributed throughout the year to reach this important stage. Your ability to bring together what you have learned and apply it thoughtfully in your comments is essential, and we are grateful for your continued commitment.

Thank you for your dedication and active participation in supporting our schools and students. As we approach the final CAC meetings, your voice and insights remain incredibly valuable. Each meeting is an opportunity to shape decisions, share your experiences, and ensure that all families – especially students with exceptional needs – are represented. We hope you will continue to join us, contribute your perspective, and help make a difference in our district. Your commitment truly strengthens our community and the success of every student.

**[Family Guide Elementary Science](#)**

*Exploring, Discovering and Building: Nurturing Scientist and Problem-solvers*

Families play a powerful role in helping students grow as curious thinkers and problem solvers in science. When schools and families work together, children build confidence, stronger understanding and excitement about how the world works. This guide helps bridge learning between home and school,





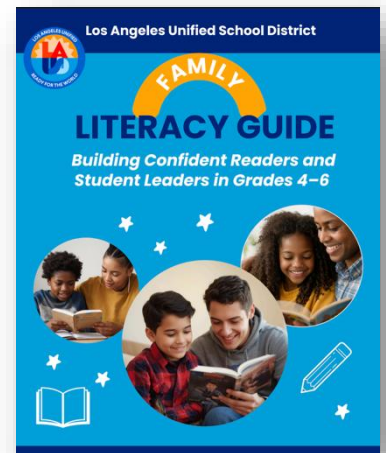
**Community Advisory Committee**  
**Office of Student, Family and Community Engagement**  
**Wednesday, April 22, 2026**

making it easier to support your child’s science learning.

**Family Literacy Guide**

*Building Confident Readers and Student Leaders  
in Grades 4–6*

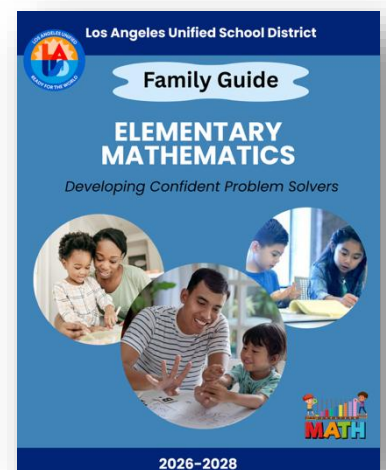
Families play a powerful role in helping upper-elementary students grow as readers and writers. When schools and families work together, children in grades 4–6 make the strongest gains in language, literacy, and confidence. This guide connects home and school, making it easier to support your child’s learning.



**Family Guide Elementary Mathematics**

*Developing Confident Problem Solvers*

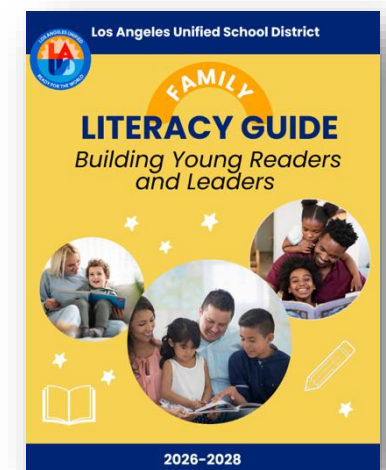
Family Guide to Supporting Mathematics Learning at Home  
Math learning happens everywhere: in games, recipes, sports scores, building projects, and “How many more do we need?” moments. When children learn that math is about making sense, they become more confident and willing to try—even when problems feel challenging.



**Family Literacy Guide**

*Building Young Readers and Leaders*

Families play one of the most powerful roles in helping children grow as readers and writers. This guide was created to bridge the connection between home and school, making it easier for families to support children’s learning and includes: (1) Explanations of what children are learning in literacy at different grade levels. (2) Age-appropriate literacy activities that you can do at home—whether it’s during homework time, while reading bedtime stories, or even in the car on the way to school. (3) Supports aligned to high-quality programs your child’s teacher uses in the classroom: Amplify Core Knowledge Language Arts (CKLA) and University of Florida Literacy Institute (UFLI) Foundations, and i-Ready Reading. (4) Family-friendly tips to help you understand literacy reports and





**Community Advisory Committee  
Office of Student, Family and Community Engagement  
Wednesday, April 22, 2026**

assessment results, so you know exactly how your child is progressing.

**LAUSD Division of Special Education Family Resource Fairs:** Join these resource fairs on select Saturdays in April and May where families will have the opportunity to connect with district teams, community partners, and service providers to learn about resources, supports, and tools that strengthen learning at home and support student success. Access to district and community resources that support students with disabilities. Learn about strategies and tools that support learning at home and get family-friendly materials and resources to take home. Access the flyer [here](#) for dates and locations at each Region. For more information, please contact the Division of Special Education at [dse.families@lausd.net](mailto:dse.families@lausd.net). We hope to see you there!



**Spring Coffee with the Region Special Education:** You are invited to join the Division of Special Education (DSE) for the Spring Coffee with the Region Special Education events. These virtual gatherings are being held in each region and will include an opportunity for participants to share their input through a ThoughtExchange. The Community Advisory Committee (CAC) is cordially invited, and we encourage all members to attend. If your CAC category is not assigned to a specific region, you are welcome to choose whichever regional event works best for you. These events are open to all families, and we encourage you to share this invitation within your school communities. Please find the flyers [here](#).

**NEW DATE: United and Inspired: The Music Center’s 47th Annual Very Special Arts Festival Family Day:** Join this exciting, free-admission festival full of activities, music, art and fun at this annual event, put together by The Music Center in collaboration with other organizations, including LAUSD. There will be art activities, workshops and performances. Put this festival on your family calendar; it takes place on **Saturday, May 2, 2026 from 11:00 a.m. to 2:30 p.m.** Parking is available at 135 N. Grand Ave. For more information, visit [MusicCenter.org/FamilyDay](http://MusicCenter.org/FamilyDay). Flyer can be found [here](#).



[LAUSD Choices](#) is the District’s public school enrollment and choice program that offers families the opportunity to apply to a wide range of specialized schools and programs beyond their neighborhood school. Through LAUSD Choices, families can explore

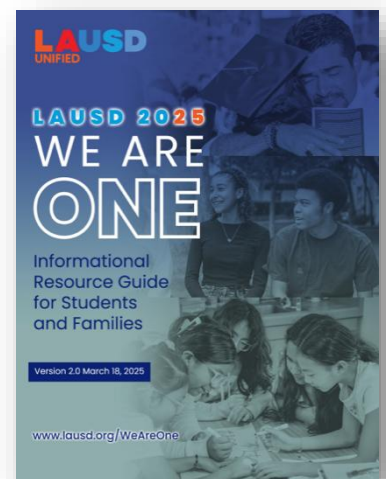


**Community Advisory Committee**  
**Office of Student, Family and Community Engagement**  
**Wednesday, April 22, 2026**

educational options that align with their child's interests, strengths, and learning needs. LAUSD Choices includes programs and services such as Magnet Schools, Dual Language Education Programs, School for Advanced Studies (SAS), Highly Gifted Programs, Affiliated Charter Schools, and Zones of Choice. These programs are designed to promote academic excellence, innovation, equity, and access to diverse learning environments across the District. **Registration for the 2026–2027 school year will open on February 2, 2026, at 8:00 a.m.** Applications submitted after the deadline will be considered late and added to the waitlist in the order they are received. The **Zones of Choice application for both the 2025–2026 and 2027–2028 school years will remain open through September 30, 2026.** For more information and to apply, families are encouraged to visit the LAUSD Choices website and review program eligibility and timelines carefully. <https://choices.lausd.net/>.  
\*Brochure comes in other languages.

**LAUSD 2025: We Are One:** If you or your family need assistance regarding virtual school options, transportation, immigration, health, wellness, or housing, please call **LAUSD's Family Hotline at (213) 443-1300**. The hotline is available 24 hours a day, 7 days a week. The **LA Unified 2025: We Are One** campaign formalizes and amplifies the District's efforts to cultivate welcoming learning environments for all students. We Are One Know Your Rights Workshops are available for families and schools across L.A. to come together for these powerful weekly workshops designed to inform, support, and empower our communities every 1<sup>st</sup> & 3<sup>rd</sup> Friday mornings from 9:00 – 10:30 a.m. and 2<sup>nd</sup> & 4<sup>th</sup> Friday evenings from 5:00 – 6:30 p.m. Zoom Information: Zoom URL: [bit.ly/WeAreOneLAUSD](https://bit.ly/WeAreOneLAUSD), Zoom ID: 895 5755 5227.

**Food Assistance:** In these challenging times, we continue to come together as a community to support our LAUSD children and families. The Los Angeles Unified School District is committed to ensuring that every child has access to nutritious meals. Free supper meals are available for **LAUSD students, ages 1–18**, Monday through Friday after school, at most Los Angeles Unified school campuses. Please note that all meals must be eaten on school grounds. For more information and to find a list of school, weekend, and holiday meal distribution sites, please visit [lausd.org/foodhelp](https://lausd.org/foodhelp). If you have any questions, contact the **LAUSD Family Hotline at (213) 443-1300**, available 24 hours a day, 7 days





**Community Advisory Committee**  
**Office of Student, Family and Community Engagement**  
**Wednesday, April 22, 2026**

a week. Together, we remain committed to supporting our students and families.

**Strategic Plan Pillar III: Engagement and Collaboration Highlights**

**The Parent Portal** is available for all parents and guardians to learn more about the program and progress of their children in a variety of different areas. Over **91%** of Los Angeles Unified families are already connected! Learning about the different features of the Parent Portal allows parents to partner with their school communities to celebrate student achievement, ask focused questions, and identify needed support. Call the Los Angeles Unified Hotline at 213-443-1300 for help getting connected or for assistance with using the features.

**The School Volunteer Program** is a resource available for families and the community to offer their time, skills and knowledge to support Los Angeles Unified students. This year, Los Angeles Unified had over **42,211** processed volunteers serving in District schools. For more information about the School Volunteer Program, visit <https://www.lausd.org/volunteer>.

**The Family Academy:** The Family Academy is comprised of webinar, in-person and hybrid sessions designed to leverage families' assets to be empowered as they support their child from the early primary years to college and career success. This effort complements families' knowledge by connecting them to actionable learning focused on their child's development, as well as opportunities to accelerate their own careers and quality of livelihood. The schedules for offerings online and in the Regions with webinar links and summary information are available at <https://www.lausd.org/familyacademy>, along with past recorded content.

**Equity Course Pathways:** The Family Academy, in partnership with the Division of Adult and Career Education, offers cohort-centered courses known as Equity Course Pathways. The curriculum is organized as a 7-class course of experience where families engage in culturally relevant curriculum in a cohort learning environment, define family engagement, and develop their action plan to stay engaged in their child's education. Choose from one of four pathways: multilingual learners, Black and African American learners, youngest learners, and learners with exceptional needs. Click on the link to join the interest list and someone will contact you to enroll: [LAUSDAdultEd.org/HelpYourChild](https://LAUSDAdultEd.org/HelpYourChild).

**Aera Adult Education Virtual Academy** **LAUSD**

### Classes for Parents

Learn how to help your child succeed in School

We are offering four classes at no cost:

- African American and Black Learners** (Tuesdays & Thursdays)  
Learn about race, culture, and self-identity by focusing on language development, motivation, and college and career readiness.
- Exceptional Learners** (Tuesdays & Thursdays)  
Learn about the history of special education, parental rights, individualized education programs (IEP), and the importance of educational barriers.
- Youngest Learners** (Mondays & Tuesdays)  
Learn the importance of language literacy, numeracy skills, oral and print literacy, and the importance of play.
- Multilingual Learners** (Tuesdays & Thursdays)  
Learn about the benefits of bilingualism and bilingual education, and how to support your child's language and academic success.

Classes meet over Zoom in the evenings 6:30 pm - 8:30 pm.

**ONLINE Classes**  
**Sign up today!**  
Scan the QR code. Call (323) 224-5995  
Visit [LAUSDAdultEd.org/HelpYourChild](https://LAUSDAdultEd.org/HelpYourChild)

Graduates will be honored by the District at the end of the school year!



**Community Advisory Committee**  
**Office of Student, Family and Community Engagement**  
**Wednesday, April 22, 2026**

**Resources**

- **Los Angeles Unified Student Wellness and Family Hotline:** Please continue to direct parents and students to this service provided for families. Trained District personnel are available to help on all health-related topics and are accessible by dialing the following number: 213-241-3840.
- **Los Angeles Division of Special Education School and Family Support Services Hotline:** The Division of Special Education provides support for families to access resources and gain information to help their children. For more information on services to support students with special needs, call (213) 241-6701.
- **Region Leaders:** Each child's school sits in a geographical Region in the Los Angeles Unified. To connect with District leaders in a specific Region or to learn more about the specific services offered in the Region, visit <https://www.lausd.org/regions>.
- **Board of Education Meetings:** The Los Angeles Unified Board of Education hosts meetings in person and will continue to broadcast meetings online. Visit the following webpage to learn how to speak during public comment: <https://www.lausd.org/boe>.

**Responsibilities Assigned to the CAC in the California Education Code, Section 56194**

The community advisory committee shall have the authority and fulfill the responsibilities that are defined for it in the local plan. The responsibilities shall include, but need not be limited to, all the following:

- a) Advising the policy and administrative entity of the special education local plan area regarding the development, amendment, and review of the local plan. The entity shall review and consider comments from the community advisory committee.
- b) Recommending annual priorities to be addressed by the plan.
- c) Assisting in parent education and in recruiting parents and other volunteers who may contribute to the implementation of the plan.
- d) Encouraging community involvement in the development and review of the local plan.
- e) Supporting activities on behalf of individuals with exceptional needs.
- f) Assisting in parent awareness of the importance of regular school attendance.
- g) Supporting community involvement in the parent advisory committee established pursuant to Section 52063 to encourage the inclusion of parents of individuals with exceptional needs to the extent these pupils also fall within one or more of the definitions in Section 42238.01.