

# **Student Health and Human Services**

## **Pupil Services**



## **LAUSD Attendance and Support**



# Objectives

- To learn about the importance of 100% attendance
- To learn about the District's attendance goals
- To learn about the services and supports provided by Pupil Service and Attendance Counselors
- To gain a working knowledge about attendance to make recommendations related to the importance of attendance
- To learn how you can advocate for attendance and support services in your school(s)

# Why is Regular School Attendance Important?



# Students who Miss School, Miss Out!

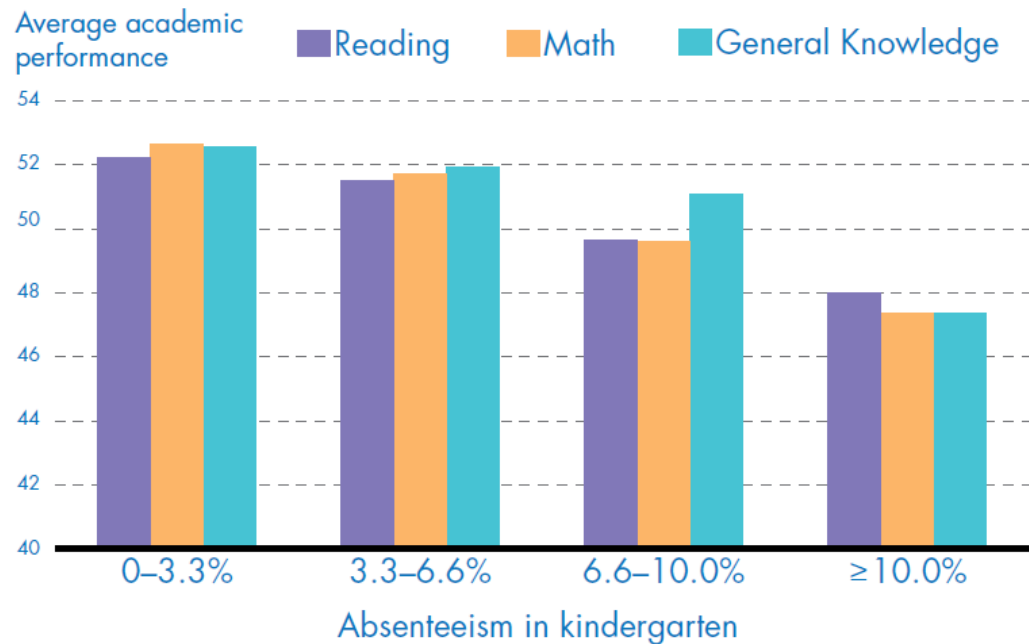


- Students who miss school lose out on valuable instructional time.
- Students who miss school are **at-risk for school failure** and are more likely to eventually **drop out**.
- Students who miss school require extra time from teachers to catch up, leaving less time for other students

# Early Grade Indicators

A student who is chronically absent in kindergarten; is more likely to perform poorly in the first grade, especially in reading/math.

**Figure 2: Chronic absentees in kindergarten have the lowest academic performance in first grade**



# High School Freshman Indicators



- Students on track at the end of their freshman year are about four times more likely to graduate than students not on target.
- Students with marginal attendance (missing one month or more per semester) have less than a 10% chance of graduating.
- One to two weeks of absences substantially reduces the probability of graduation (63% vs 87%).

# High School Graduation

- A high school graduate will earn about \$300,000 more than a high school dropout over their lifetime.
- High School dropouts are more likely to be unemployed, live in poverty, receive public assistance, and go to prison.





# Attendance Laws

- It's the law (**California Compulsory Education Code 48200**).
- Each person between the ages of 6 and 18 year... is subject to compulsory full-time education.
- Each parent, guardian, or other person having control or charge of such pupil shall send the pupil to the public full-time day school or continuation school or classes for the full-time designated as the length of the school day.



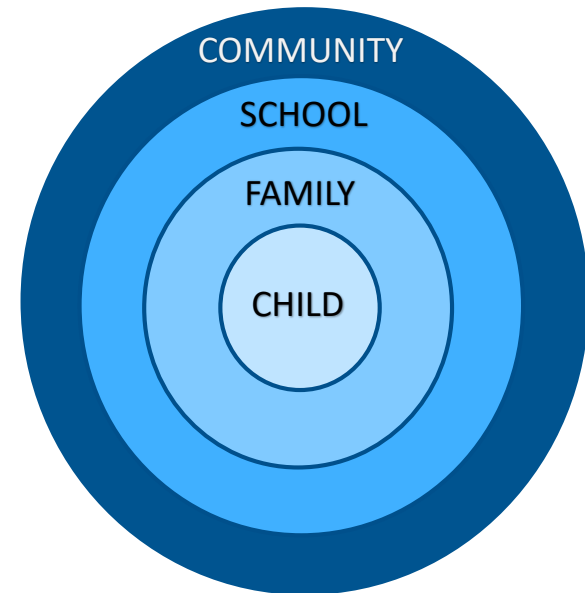
# Why Do Students Miss School?



# Serving the Whole Child

Attendance is a complex issue, driven by multiple factors including health, wellness, connectedness, and sense of safety.

## SYSTEMS APPROACH



Source: Chang, H.N., Romero, M. 2008. Present, Engaged, and Accounted for: The Critical Importance of Addressing Chronic Absence in the Early Grades. *National Center for Children in Poverty*.



# Attendance Goals

Expectations and Accountability

# LCAP Attendance Goals 2017-18



Believe. Achieve. L.A. Unified.

## LCAP SCORECARD

SEPTEMBER 2017

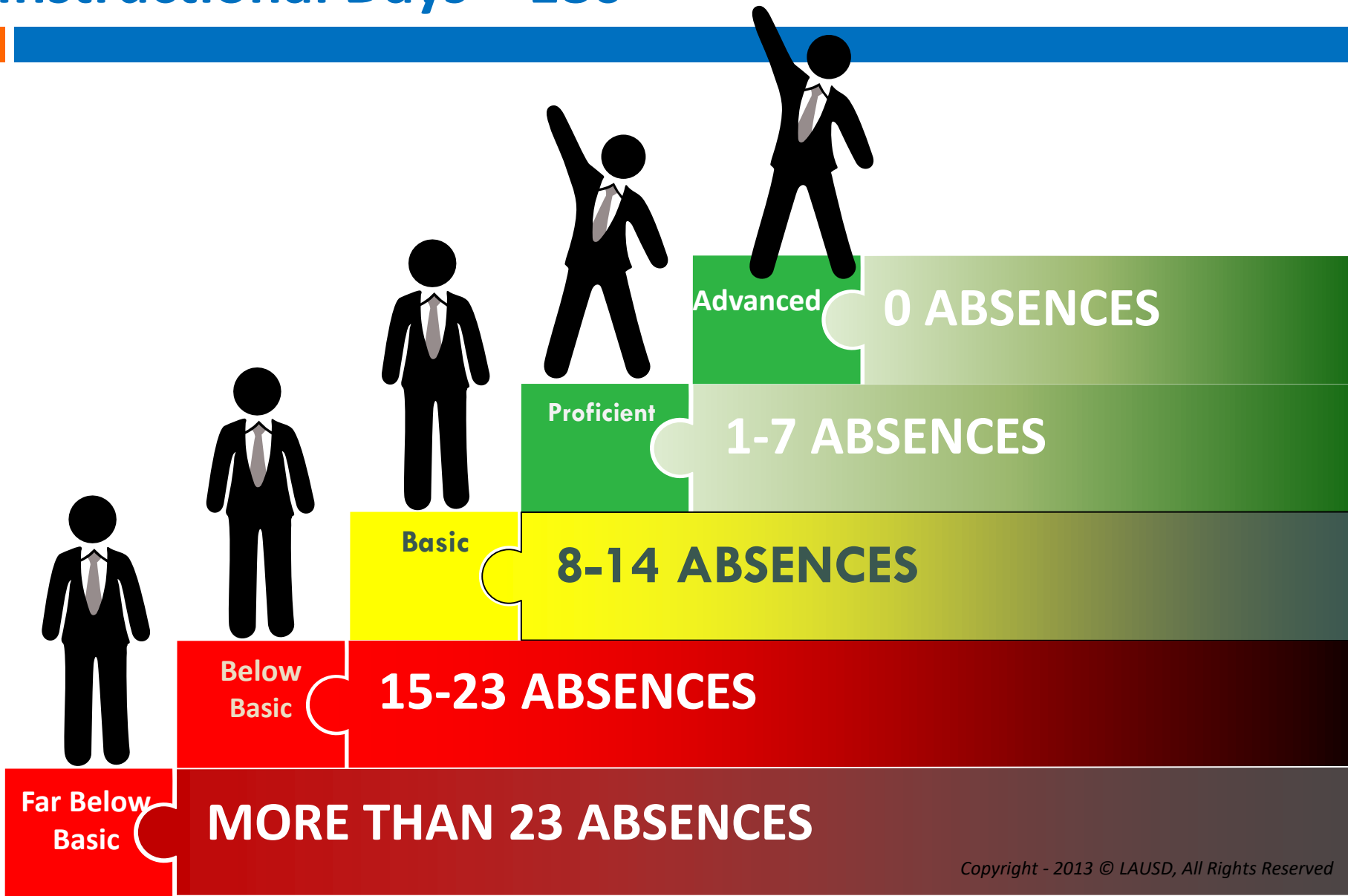
100% ATTENDANCE	Historical	Actual	Annual Targets		
	2015-16	2016-17	2017-18	2018-19	2019-20
Percentage of Students Attending 172-180 Days Each School Year (96% or Higher)	69%	68%	75%	77%	79%
Percentage of Students with Chronic Absence (Missing 16 Days or 91% or Lower)	14%	15%	9%	7%	5%

The 2017-18 District attendance goal is for:

- **75% or more** of students to maintain an attendance rate of 96% or higher throughout the school year
- **9% or less** of students to be chronically absent (*chronic absence is defined as missing 9% or more of the school year*)

# Attendance Bands at the end of the school year

## Instructional Days = 180



# Understanding the LCAP Attendance Goal



FAR BELOW BASIC	BELOW BASIC	BASIC	PROFICIENT	ADVANCED
Less than 87%	87 - 91%	92 - 95%	96 - 99%	100%
24 or more absences	15-23 absences	8-14 absences	1-7 absences	0 absences

Chronic Absence

More likely to achieve at grade level and graduate

For students who attend the entire 180-day school year:

- Students cannot miss more than 7 days all year to maintain Proficient/Advanced Attendance (96% or more)
- Students who miss 15 days or more are considered chronically absent.

# Understanding the LCAP Attendance Goal (continued)



- To maintain Proficient/Advanced Attendance, students may miss no more than 1 day for every 25 days enrolled.

Absence Counts/Attendance Achievement Bands at the End of Each Month							
2017-18	FBB	BB	Basic	Proficient	Advanced		
August	2 or more	1	0	0	0		
September	5 or more	4	2-3	1	0		
October	7 or more	5-6	3-4	1-2	0		
November	9 or more	6-8	3-5	1-2	0		
December	11 or more	7-10	4-6	1-3	0		
January	13 or more	8-12	4-7	1-3	0		
	15 or more	10-14	5-9	1-4	0		
	18 or more	11-17	6-10	1-5	0		
	20 or more	13-19	7-12	1-6	0		
	23 or more	14-22	7-13	1-6	0		
	24 or more	15-23	8-14	1-7	0		

How many days can a student miss to still be considered as having Prof/Adv attendance by the end of January?

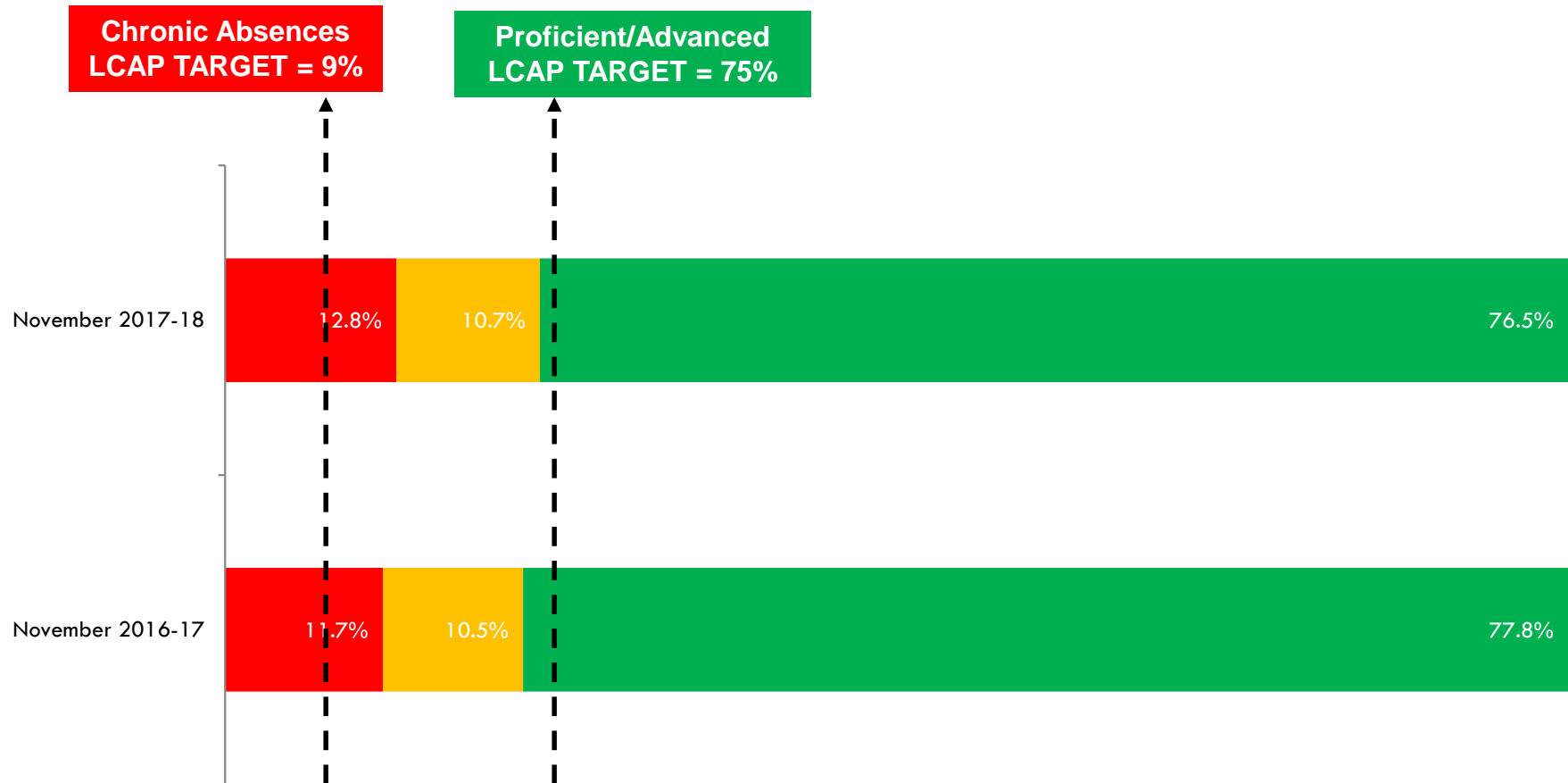
*\*Please note that **these breakdowns apply to students who have been enrolled continuously since the first day of school**. Students who enroll late will have fewer days of instruction, and must therefore miss fewer days of school to maintain a 96% attendance rate.*



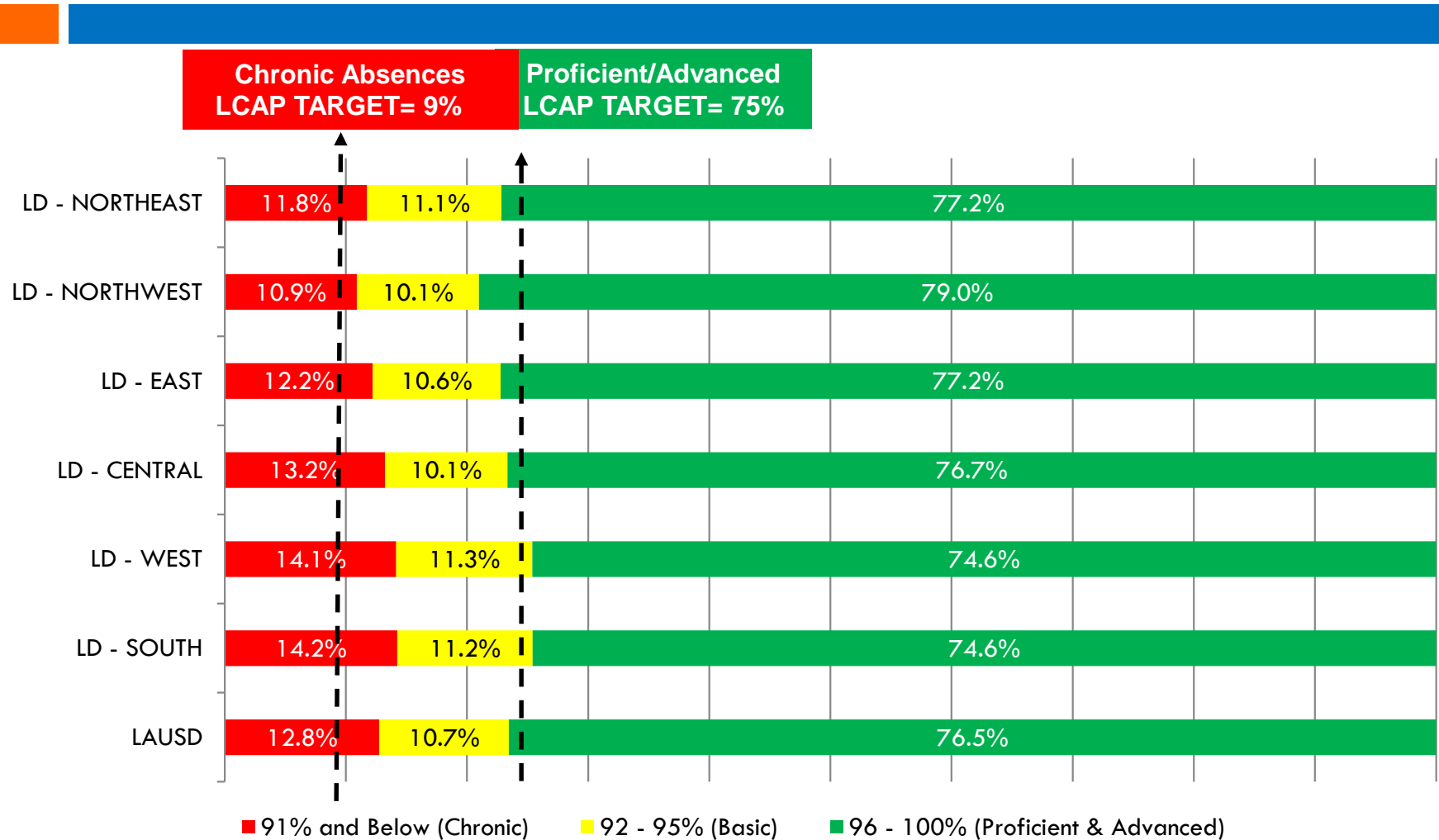
# LAUSD Attendance Data



# District Wide Attendance Bands Cumulative through November (2017-18)

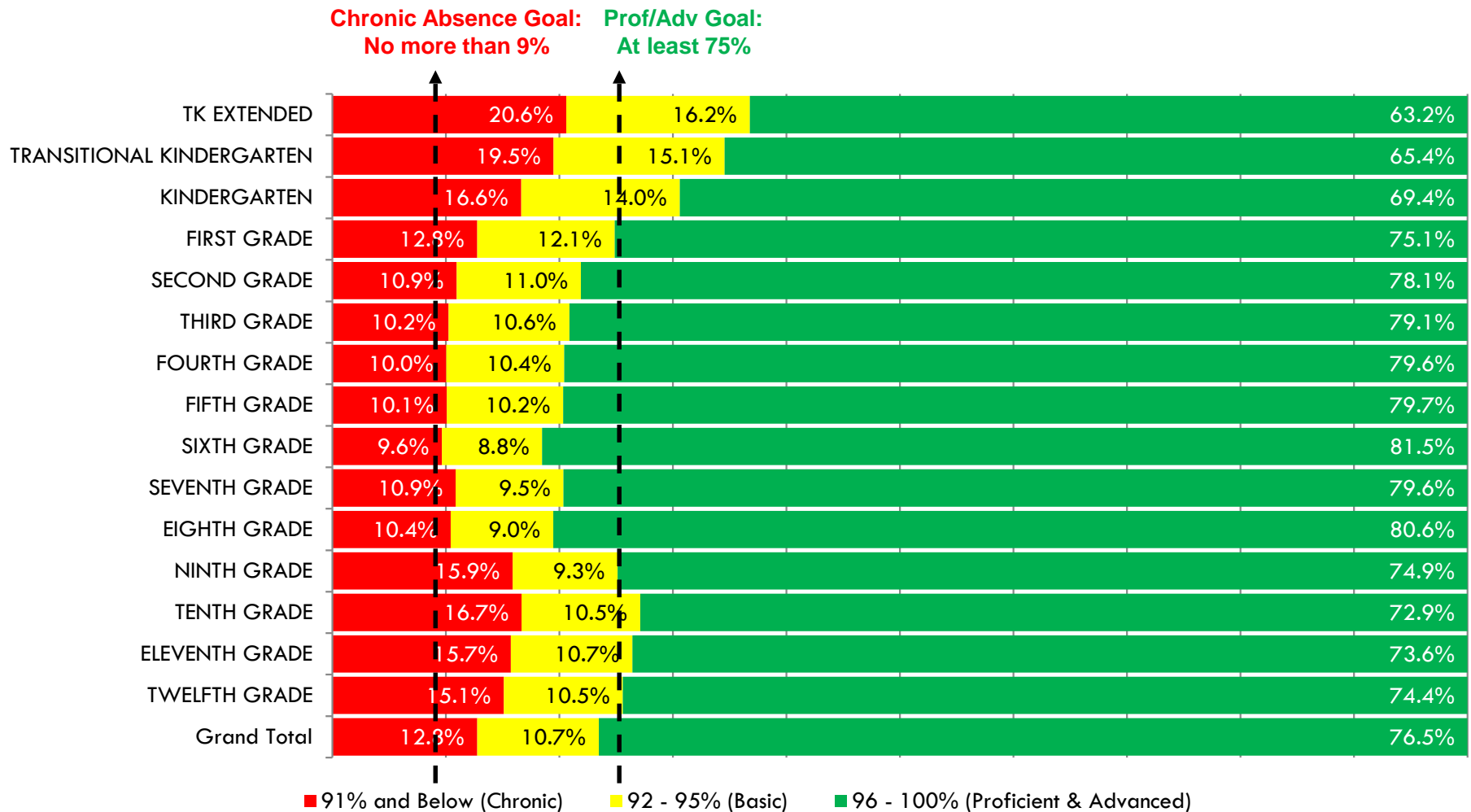


# Attendance Bands *by Local District* Cumulative YTD (2017-18)





# District-Wide Attendance Bands by *Grade Level* Cumulative YTD (2017-18)

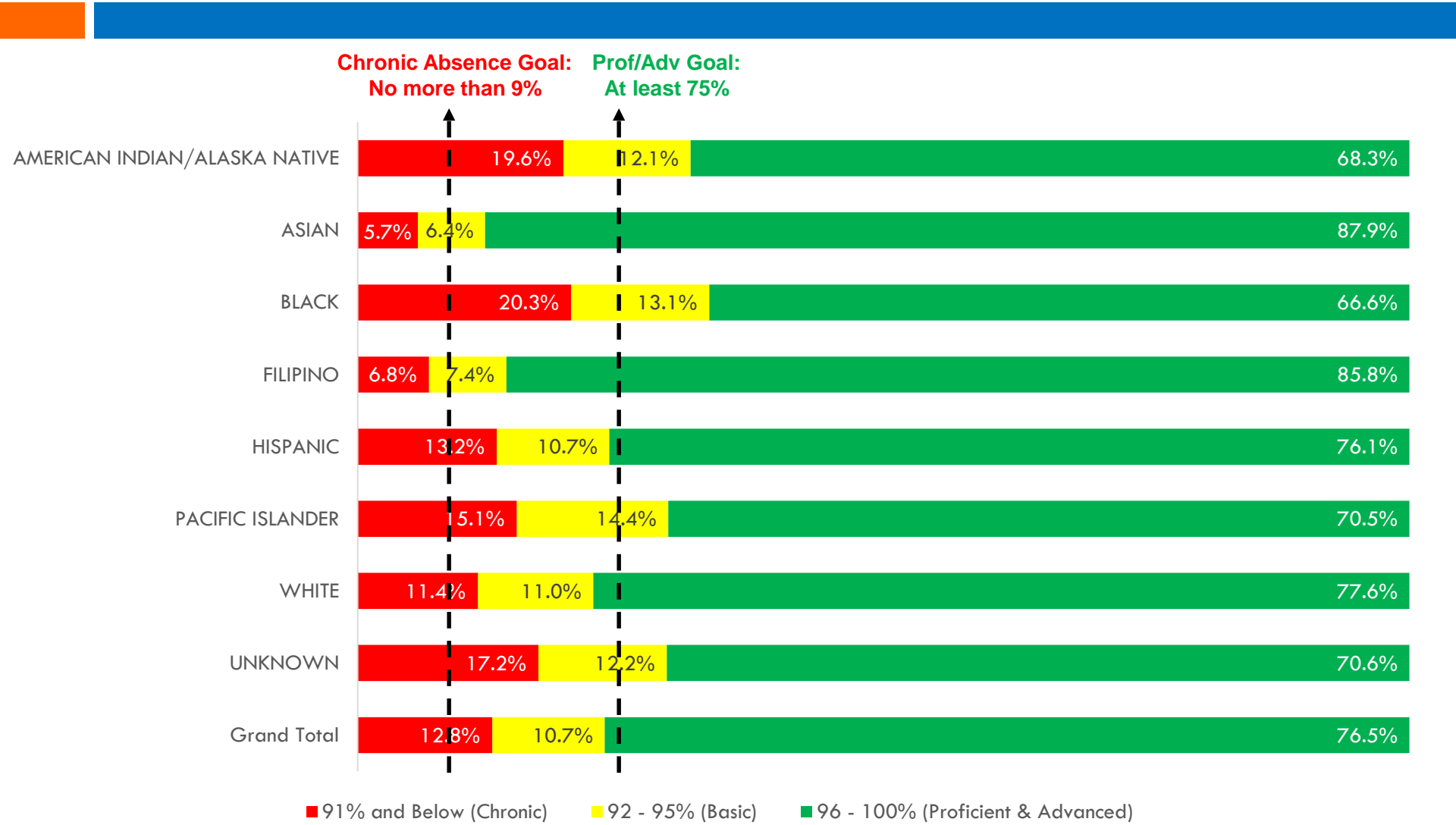


Source: MyData

Cumulative Data YTD 2017-18 Thru November 30, 2017

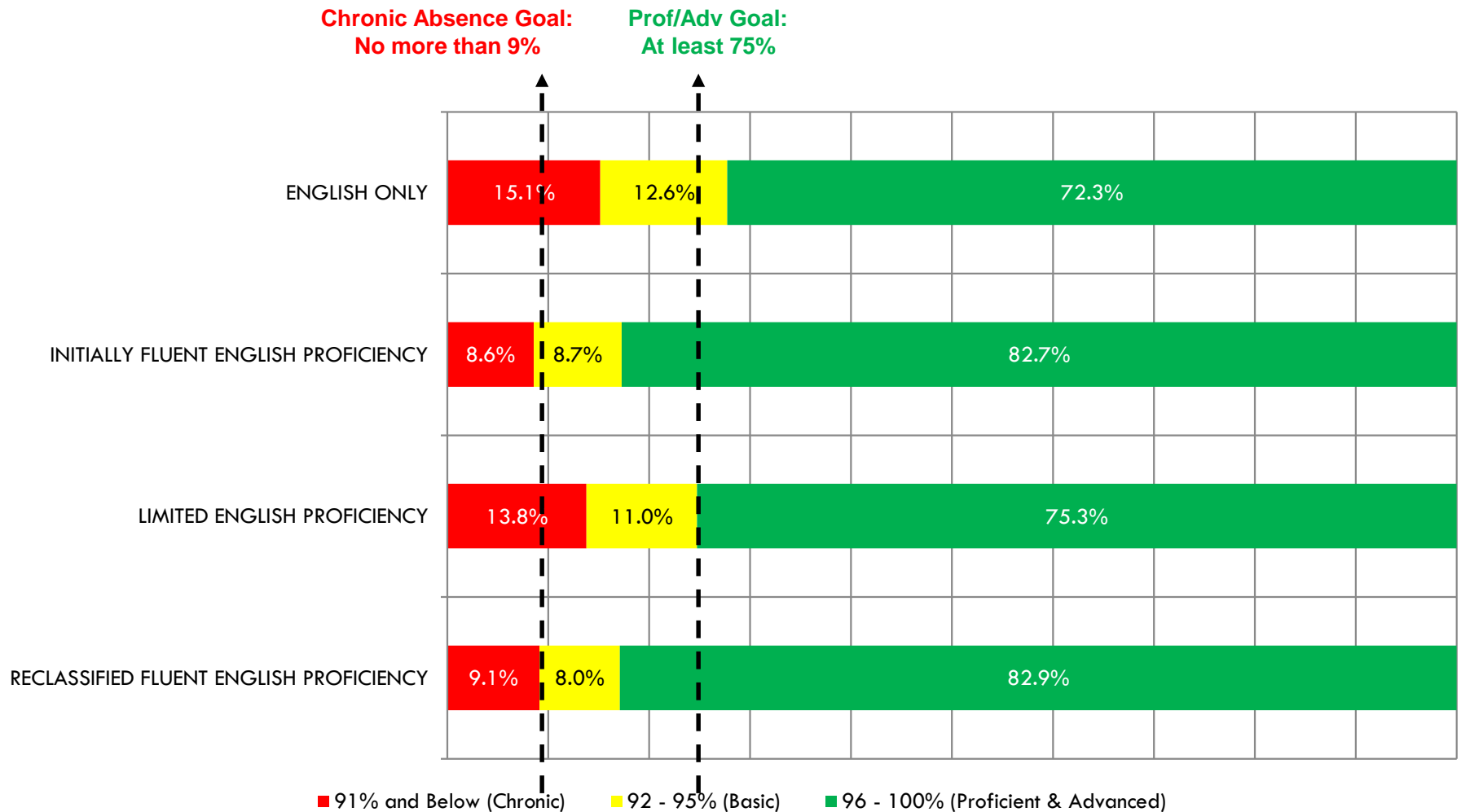


# District-Wide Attendance Bands by *Ethnicity* Cumulative YTD (2017-18)

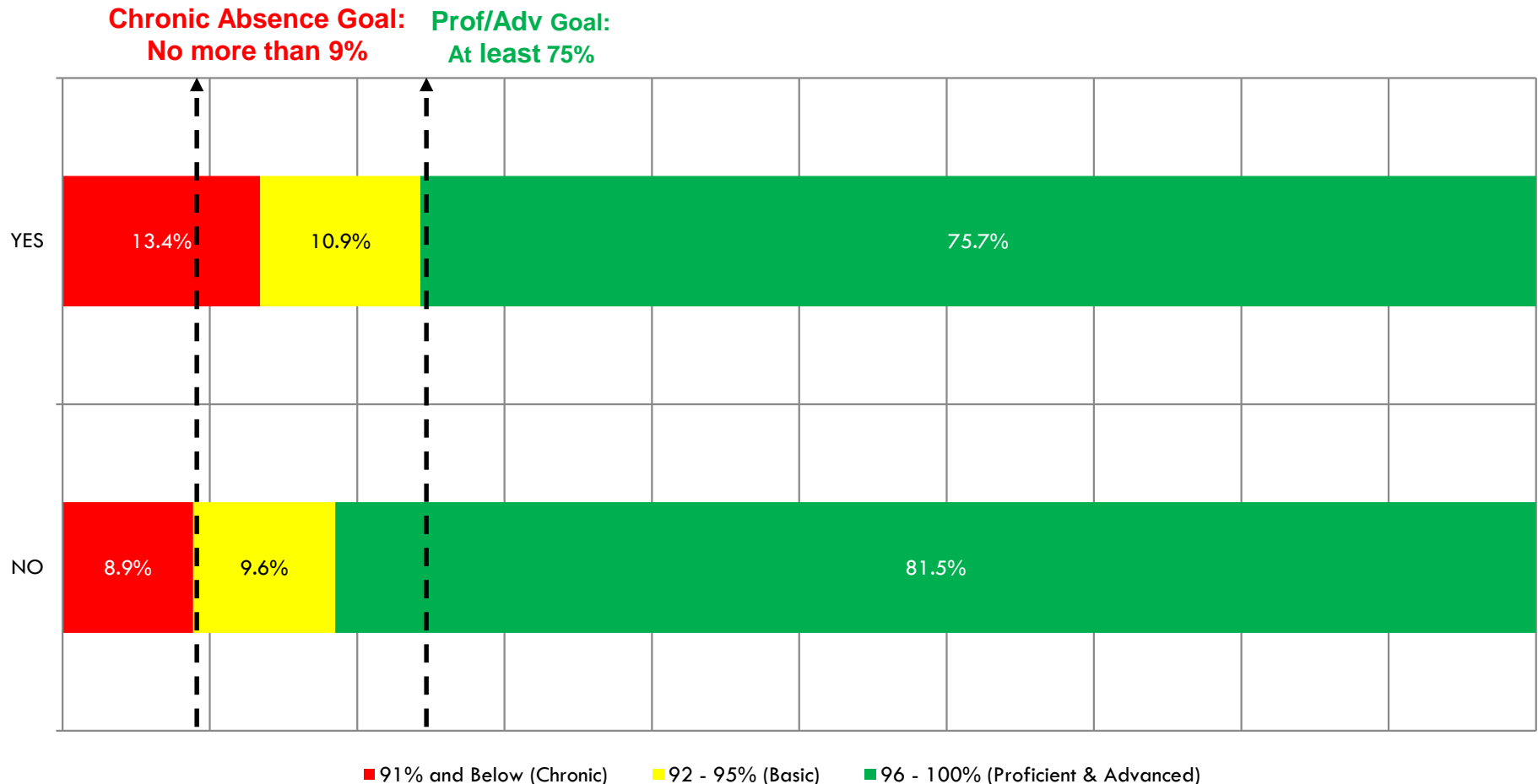


Source: MyData  
Cumulative Data YTD 2017-18 Thru November 30, 2017

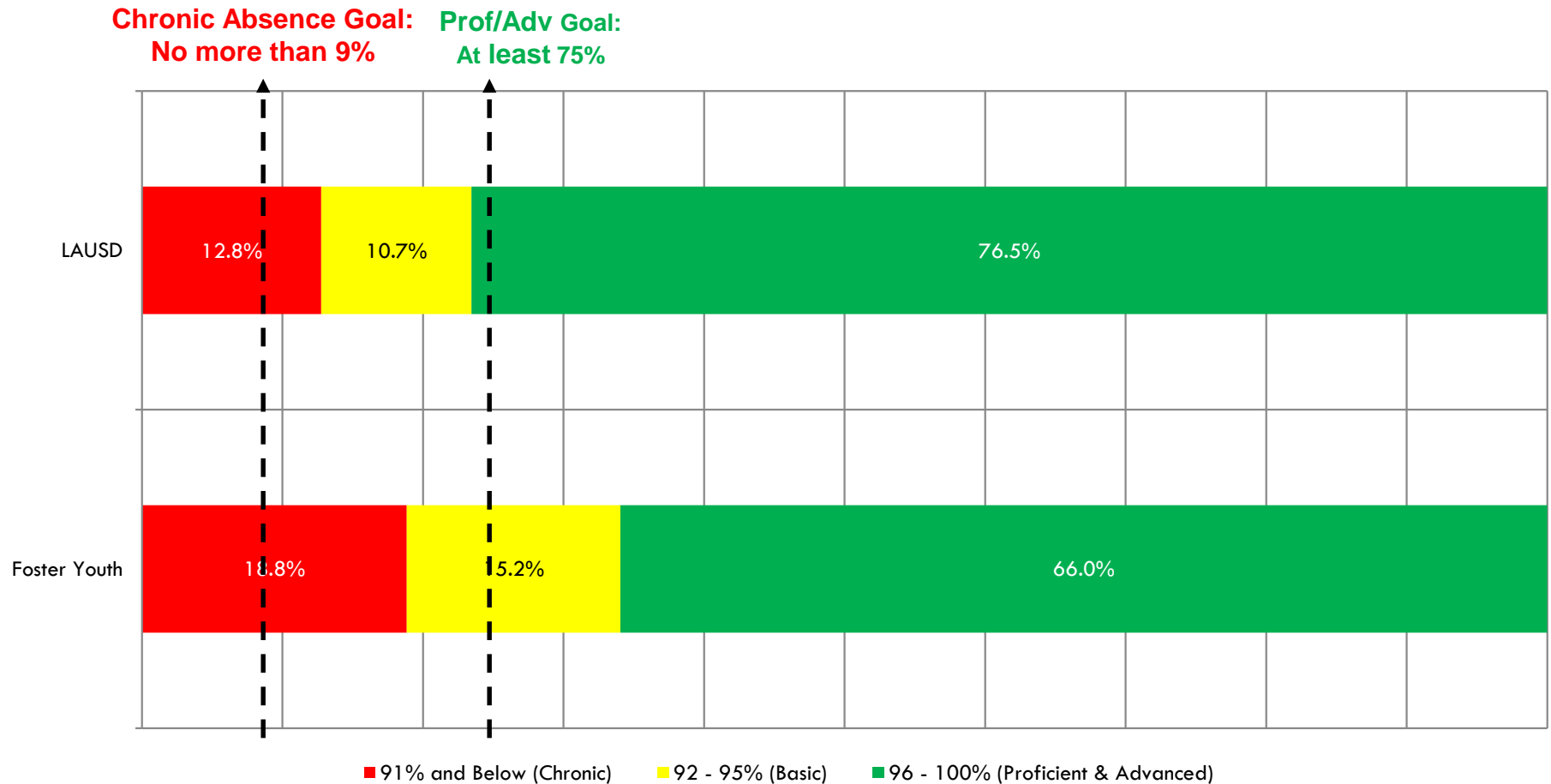
# District-wide Attendance Bands by *Language Classification* Cumulative YTD (2017-18)



# District-wide Attendance Bands Comparison by Poverty Indicator YTD (2017-18)



# District-wide Attendance Bands Comparison by Foster Youth Population YTD (2017-18)



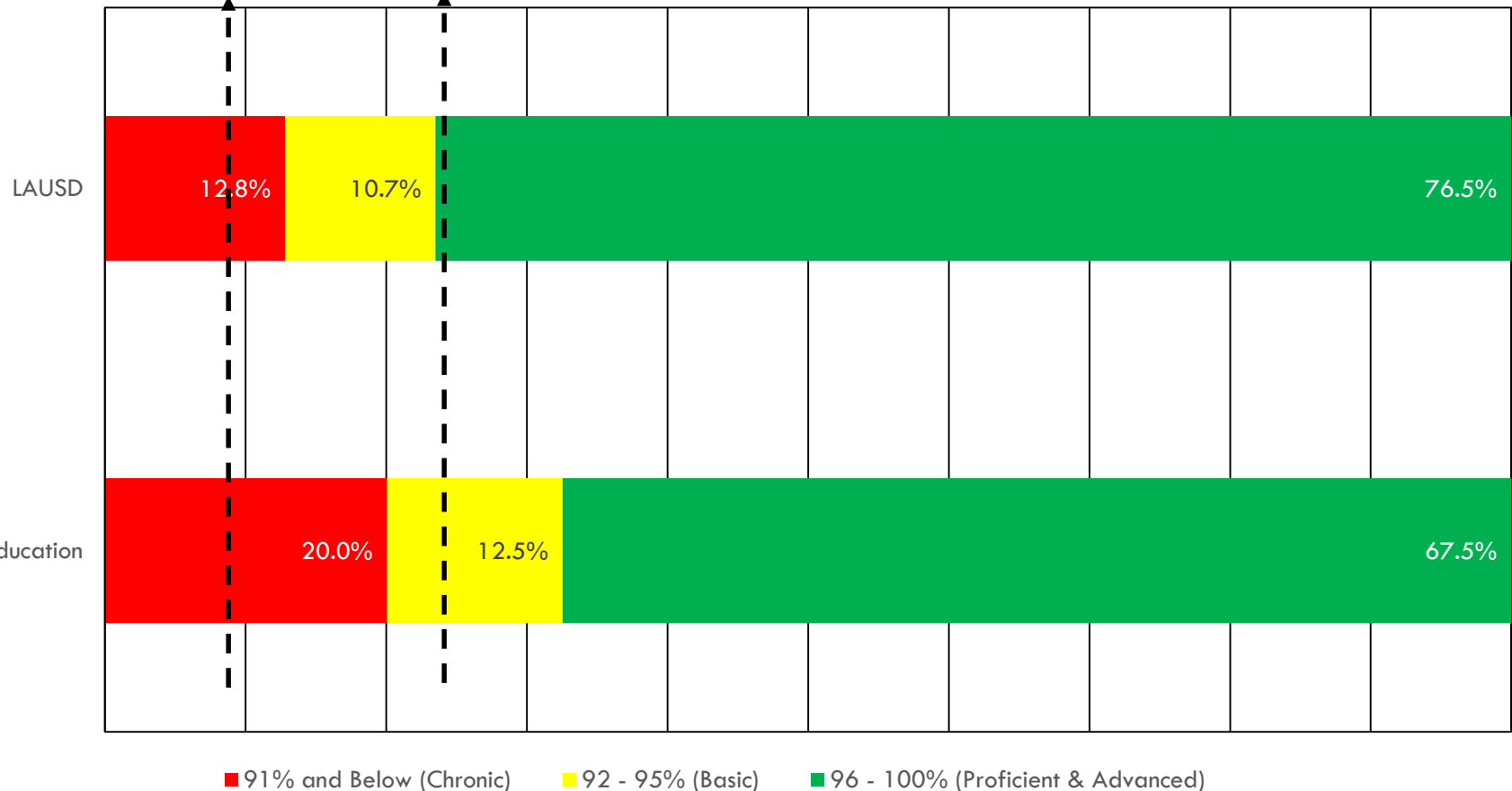
Source: MyData (LAUSD count includes Foster youth)  
Cumulative Data YTD 2017-18 Thru November 30, 2017

# District-wide Attendance Bands Comparison by *Special Education* Population YTD (2017-18)



**Chronic Absence Goal:**  
No more than 9%

**Prof/Adv Goal:**  
At least 75%



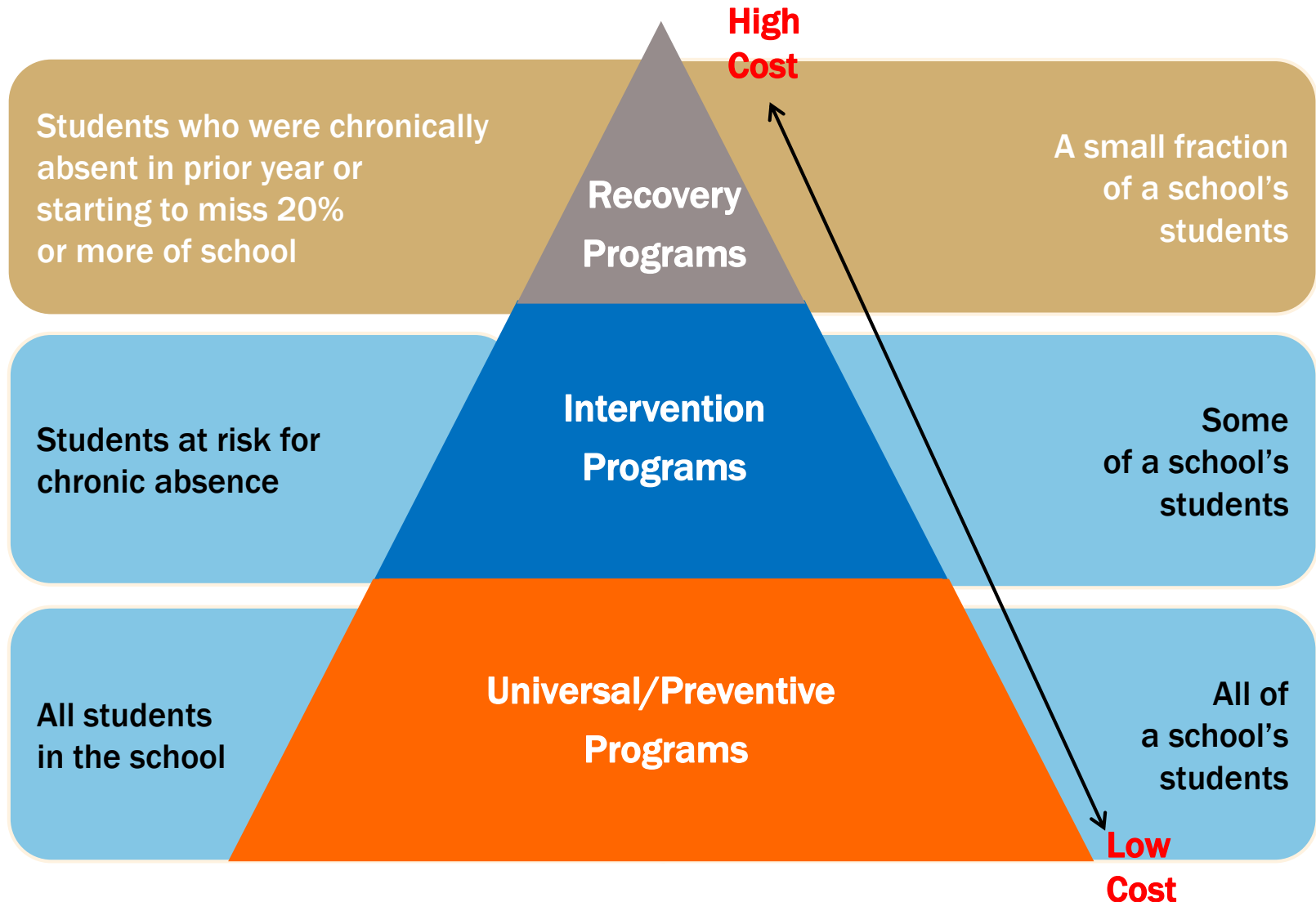




# Absence Prevention and Intervention

How we Support Students  
and Families in LAUSD

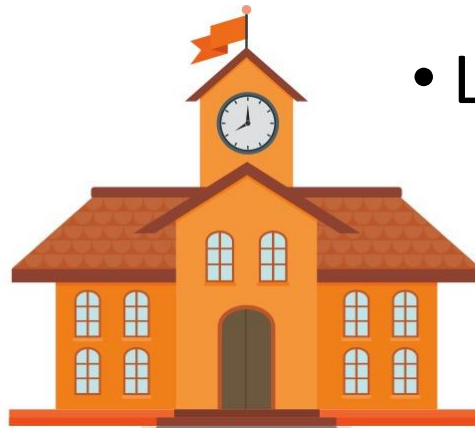
# Absence Prevention and Intervention



# Essential Elements to Addressing Attendance



- Systems-wide prevention and early intervention
- Positive, safe school culture
- Meaningful and supportive relationships
- Parent Engagement
- Community partnership and collaboration
- Leadership and vision



Balfanz, R., Byrnes, V. 2012. The Importance of Being in School: A Report on Absenteeism in the Nation's Public Schools. *Center for Social Organization of Schools*.

Chang, H.N., Romero, M. 2008. Present, Engaged, and Accounted for: The Critical Importance of Addressing Chronic Absence in the Early Grades. *National Center for Children in Poverty*.

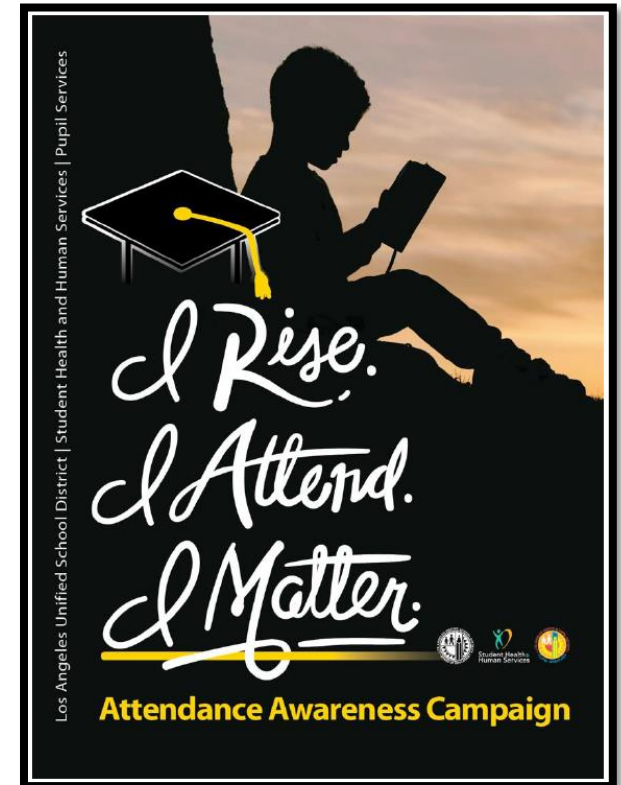
Anderson-Butcher, D., et al. (2010). Emergent Evidence in Support of a Community Collaboration Model for School Improvement. *National Association of Social Workers* (32), 160-171.

Peek, S.D. 2009. Integrating Effective and Beneficial Interventions to Increase Student Attendance in an Elementary School Setting. *Georgia School Counselors Association* (16), 9-20.

Epstein, J.L. 2004. Getting Students to School: Using Family and Community Involvement to Reduce Chronic Absenteeism. *School Community Journal* (14) (2), 39.

# L.A. Unified's Attendance Efforts

- Attendance Awareness Campaign
- Attendance Dashboards
- Outreach to families and community
- Partnership with Parent Community Services
- Local District teams and school site support
- Identify best practices



# Pupil Services Mission Statement

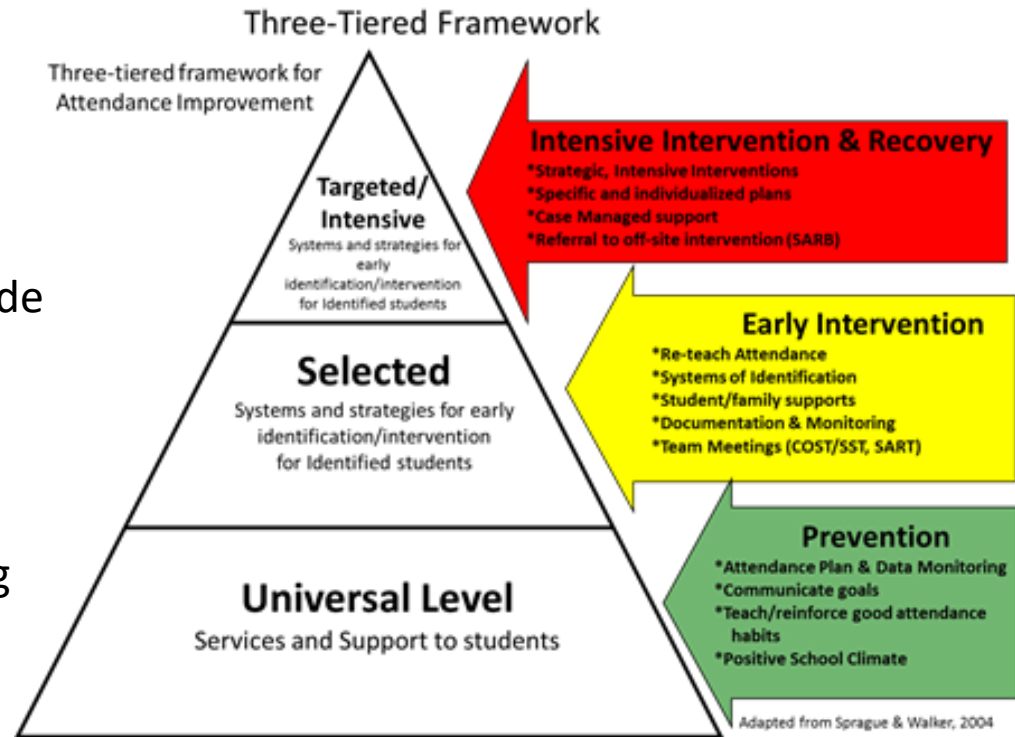
*“To ensure that all LAUSD students are enrolled, attending, engaged, and on-track to graduate”*



# Pupil Services and Attendance (PSA) Counselor Support Services



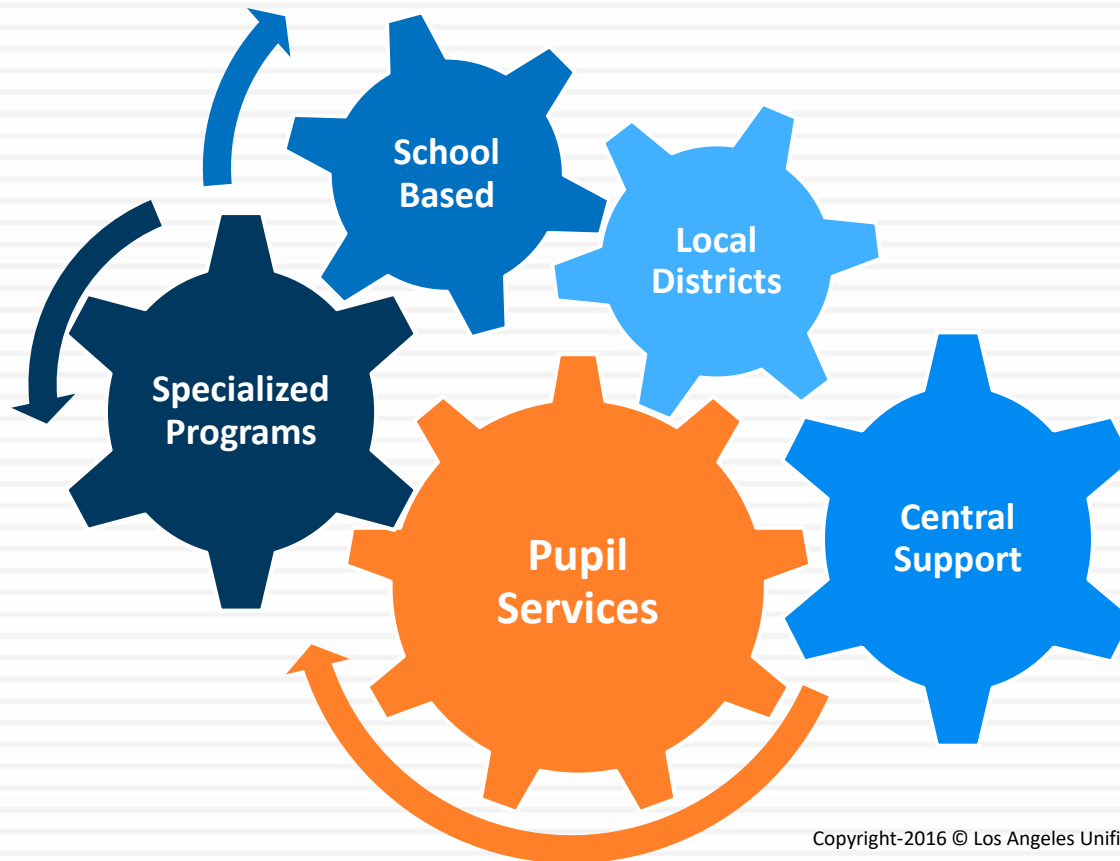
- Utilize a three-tiered model
  - Prevention
  - Early intervention
  - Intensive intervention
- Improve individual and system-wide student attendance, engagement, achievement and graduation
- Work directly with students who experience difficulties in achieving their academic potential due to social/emotional, home and community barriers
- Specialized units provide additional support services that are needed by the specific populations they serve



# How do PSA Counselors Increase Attendance?



# Pupil Services Programs





# Local District Pupil Services and Attendance Field Coordinators

Local District	Coordinator	Phone number
Central	Leilani Morales lxm8995@lausd.net	213-241-0158
East	Erin Campbell emc5498@lausd.net	323-224-5905
Northeast	Pat Jimenez patricia.x.jimenez@lausd.net	818-686-4444
Northwest	Dionne Ash Dionne.ash@lausd.net	818-654-3716
South	Acquinetta Cook adc3773@lausd.net	310-354-3421
West	Pat Burt Pat.burt@lausd.net	310-235-3766

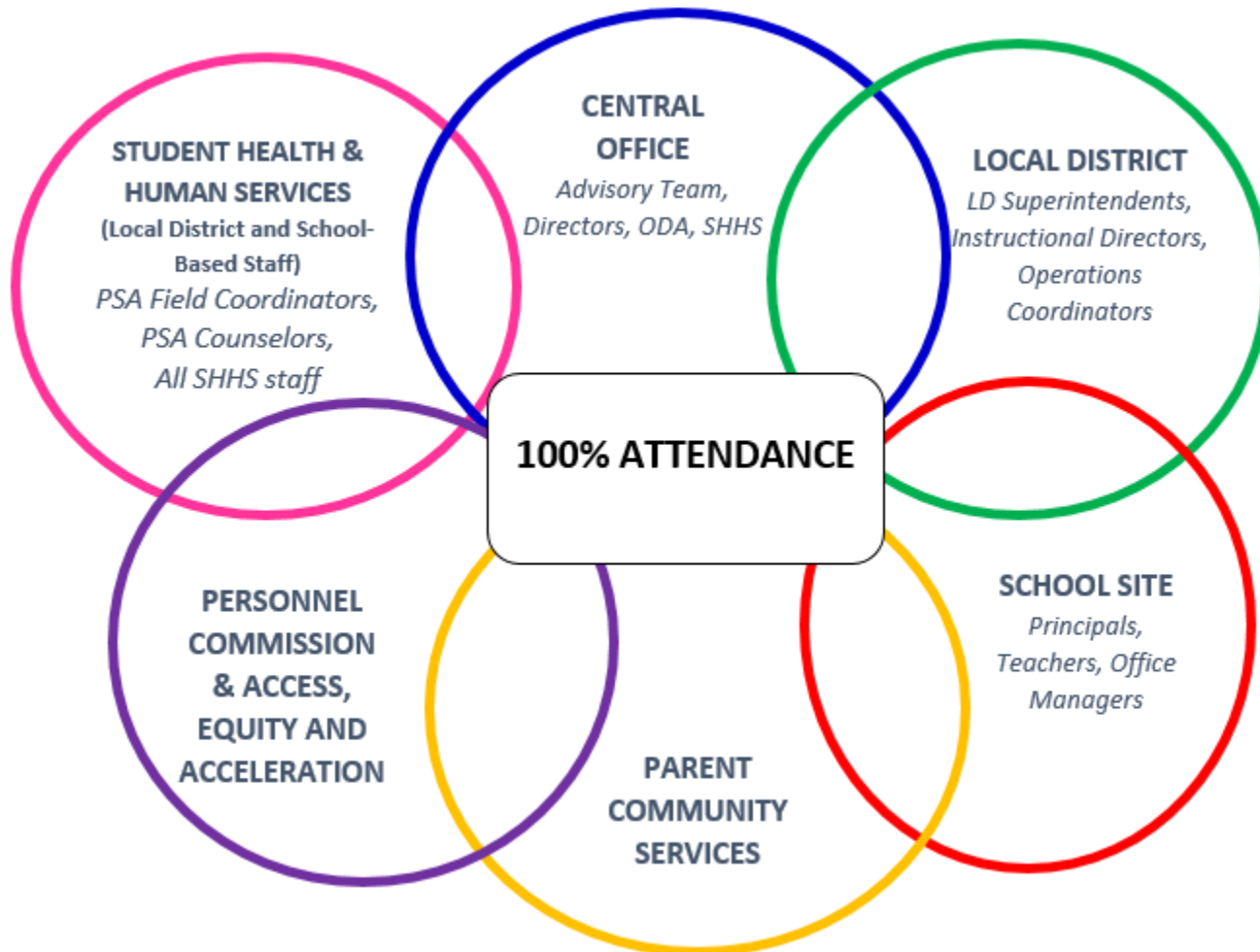
# PSA Specialized Program Coordinators

Specialized Program	Coordinator	Phone number
Attendance Improvement Program	Martha O. Godinez mgodinez@lausd.net	213-202-2012
A-G Diploma Program College Empowerment	Kristal Green Kristal.green@lausd.net	213 241-3844
FamilySource City Partnership	Betsy Lara Betsbel.lara@lausd.net	213-202-2018
Foster Youth Achievement Program	La Shona Jenkins lashona.jenkins@lausd.net	213-241-3553
Foreign Students & Permits	Norma Sturgis norma.sturgis@lausd.net	213-202-7547
Group Home Scholars	Dr. Denise Miranda denise.miranda@lausd.net	213-241-0761

# PSA Specialized Program Coordinators (continued)

Local District	Coordinator	Phone number
Homeless Education Program	Angela Chandler Angela.chandler@lausd.net	213-241-7581
Juvenile Hall/ Camp Returnee	Dr. Denise Miranda denise.miranda@lausd.net	213-241-0761
YouthSource City Partnership	Elsy Rosado eyr3367@lausd.net	213-202-2017

# Attendance is Everyone's Responsibility



# What Roles to Parents Play



- First Teacher
- Cheerleader
- Role Model
- Enforcer
- Advocate



# What Can Parents Do?



- Make sure your child gets at least 8 hours of sleep and a nutritious breakfast each day
- Create a morning and evening routine
- Talk about the importance of going to school everyday

# What Can Parents Do?



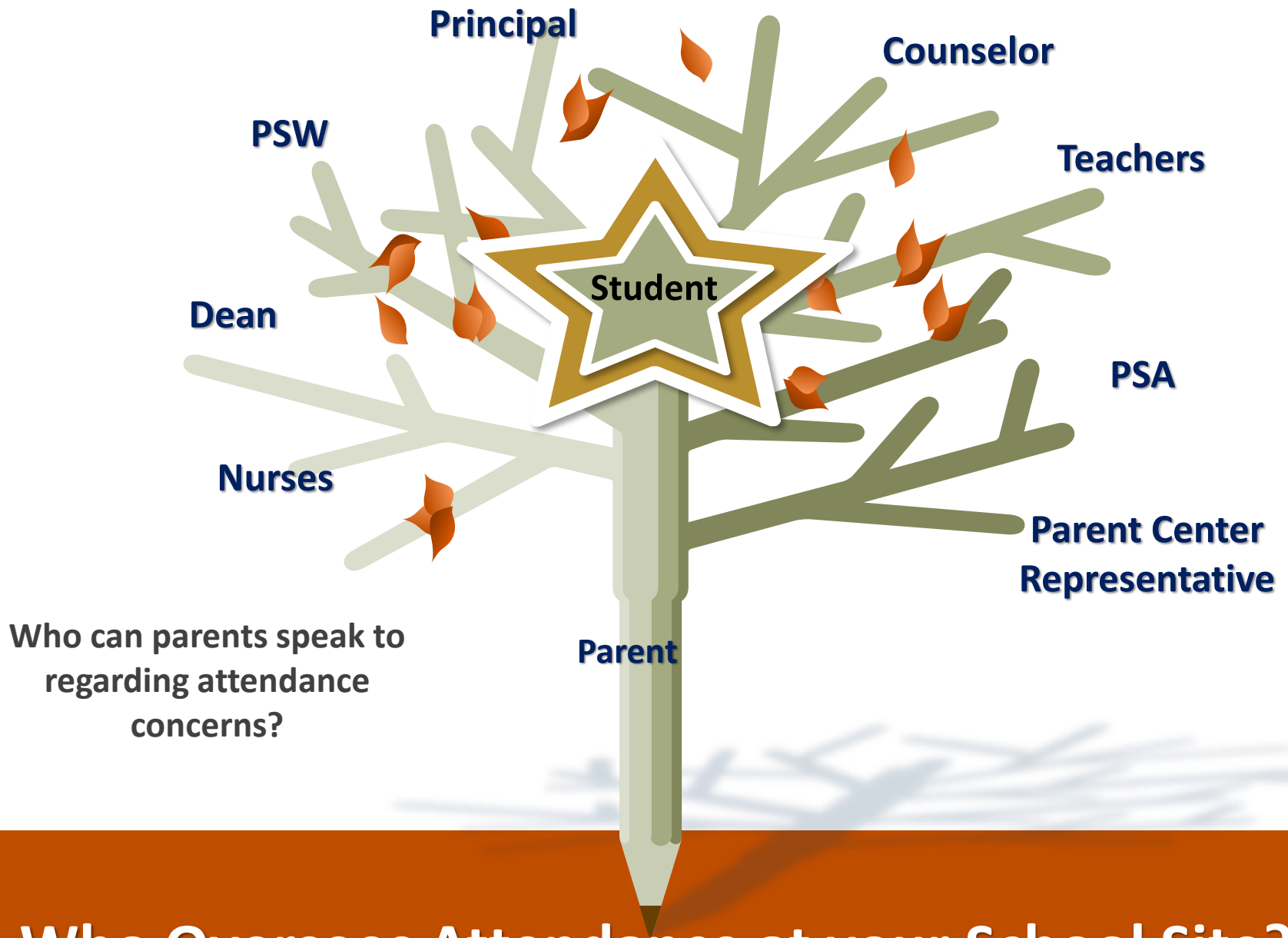
- Create a back-up system or alternate plans for getting to and from school
- Make your school aware of any issues that may be affecting your child's attendance for example: health and/or family problems
- Make sure your child's school has your accurate daytime contact information and address

# What Parents Can Do? (continued)



- Plan family vacations for non-school days only
- Schedule non-emergency medical and dental appointments after school hours on weekends or during your child's vacation
- Meet with Teacher (attend school meetings, parent conferences, IEP's), and request missing assignments when absent





Who can parents speak to regarding attendance concerns?

**Who Oversees Attendance at your School Site?**

# Comments or Questions?



# Thank You!

“To ensure that all LAUSD students are enrolled, attending, engaged, and on-track to graduate”



Pupil Services  
(213) 241-3844  
[www.pupilservices.lausd.net](http://www.pupilservices.lausd.net)