



Parent Advisory Committee
Office of Student, Family and Community Engagement
Thursday, February 19, 2026

Greetings, Parent Advisory Committee Members,

Happy February! We hope you had a productive January and are settling into the new year amid the welcome winter rains and periods of unseasonably warm weather. As we move forward, the work of this committee continues to be both meaningful and impactful. There is much ahead, and your dedication, expertise, and collaboration remain essential to confirming progress toward our shared goals and strengthening support for our school communities. We look forward to our continued collaboration in the coming months as we build upon our progress, engage in thoughtful dialogue, and take purposeful action in providing advisement and recommendations. Thank you for your continued commitment and leadership. We are confident in what we will accomplish together in 2026.

LAUSD Choices is the District's public school enrollment and choice program that offers families the opportunity to apply to a wide range of specialized schools and programs beyond their neighborhood school. Through LAUSD Choices, families can explore educational options that align with their child's interests, strengths, and learning needs. LAUSD Choices includes programs and services such as Magnet Schools, Dual Language Education Programs, School for Advanced Studies (SAS), Highly Gifted Programs, Affiliated Charter Schools, and Zones of Choice. These programs are designed to promote academic excellence, innovation, equity, and access to diverse learning environments across the District. **Registration for the 2026–2027 school year will open on February 2, 2026, at 8:00 a.m.** Applications submitted after the deadline will be considered late and added to the waitlist in the order they are received. The **Zones of Choice application for both the 2025–2026 and 2027–2028 school years will remain open through September 30, 2026.** For more information and to apply, families are encouraged to visit the LAUSD Choices website and review program eligibility and timelines carefully. <https://choices.lausd.net/>. *Brochure comes in other languages.

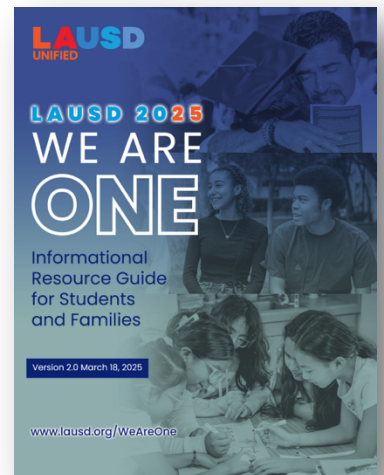
District Requirements for School Budget Development: The Los Angeles Unified School District establishes districtwide requirements that all school sites must follow during the annual budget development process to ensure fiscal accountability, equity, and alignment with student achievement goals. Each school site is required to develop its budget in compliance with LAUSD policies, state and federal regulations, and District timelines. School budgets must be aligned to the School Plan for Student Achievement (SPSA) and reflect



Parent Advisory Committee
Office of Student, Family and Community Engagement
Thursday, February 19, 2026

data-driven decisions based on student needs, including English Learners, students with disabilities, foster youth, and socioeconomically disadvantaged students. Budget development must comply with categorical funding guidelines, allowable expenditures, and staffing norms provided by the District. All school sites are required to engage in stakeholder consultation and approval (voting), including review and input from the School Site Council (SSC) and recommendations from the English Learner Advisory Committee (ELAC). Budgets must be transparent, documented, and formally approved prior to submission. Ongoing monitoring and adjustments must adhere to District procedures and require appropriate approvals. School sites follow all District budget development requirements by aligning budget decisions to the SPSA and student data, adhering to District staffing norms and funding guidelines, engaging required stakeholder groups in the review and approval process, meeting all District timelines and documentation requirements, and monitoring expenditures to ensure compliance and fiscal responsibility. This approach ensures that the school's budget supports instructional priorities, equity, and student success while maintaining full compliance with LAUSD expectations, and that budget and student data are reviewed with the School Site Council (SSC) to ensure approval of supports aligned to students' academic needs.

LAUSD 2025: We Are One: If you or your family need assistance regarding virtual school options, transportation, immigration, health, wellness, or housing, please call **LAUSD's Family Hotline at (213) 443-1300**. *The hotline is available 24 hours a day, 7 days a week.* The [LA Unified 2025: We Are One](#) campaign formalizes and amplifies the District's efforts to cultivate welcoming learning environments for all students. Recent LA Unified policy updates outline the following: The District stands in unity with all the students, families, and staff in our school communities. The District has protocols for responding to immigration personnel requests for information. The District will do everything in its power to protect and defend students, families, and staff, and will defend all students' right to a public education. Every District site will be a place of support and resources for all students and families, regardless of immigration status and any other protected groups in alignment with the District's Nondiscrimination Policy. We Are One Know Your Rights Workshops are available for families and schools across L.A. to come together for these powerful weekly workshops designed to inform, support, and empower our communities every 1st & 3rd Friday mornings from 9:00 – 10:30 a.m. and 2nd & 4th Friday





**Parent Advisory Committee
Office of Student, Family and Community Engagement
Thursday, February 19, 2026**

evenings from 5:00 – 6:30 p.m. Zoom Information: Zoom URL: bit.ly/WeAreOneLAUSD, Zoom ID: 895 5755 5227.

Food Assistance: In these challenging times, we continue to come together as a community to support our LAUSD children and families. The Los Angeles Unified School District is committed to ensuring that every child has access to nutritious meals. Free supper meals are available for **LAUSD students, ages 1–18**, Monday through Friday after school, at most Los Angeles Unified school campuses. Please note that all meals must be eaten on school grounds. For more information and to find a list of school, weekend, and holiday meal distribution sites, please visit lausd.org/foodhelp. If you have any questions, contact the **LAUSD Family Hotline at (213) 443-1300**, available 24 hours a day, 7 days a week. Together, we remain committed to supporting our students and families.



Strategic Plan Pillar III: Engagement and Collaboration Highlights

Special Education Workshops: The Division of Special Education has various resources available for parents, so they can take advantage of every opportunity to be an active partner in their child’s education. Workshops and training are offered throughout the school year, covering various topics related to the needs of students with disabilities and the many ways parents can support their child both in and out of the classroom. In addition to workshops and training sessions, District- and community-sponsored events supportive of students and parents are available. For more information, visit <https://sped.lausd.org/parents>.

Region Ambassadors: The Los Angeles Unified Region Ambassadors will be valuable advocates and guides who inform their school communities about District services and resources. Each segment of learning is hosted in a hybrid format to meet the preference of diverse families so they can learn in person and online. If interested in learning more about supports for English Learners, for students with special needs, or the Local Control and Accountability Plan, which is the District’s plan for use of its general funds, consider attending a Region





Parent Advisory Committee
Office of Student, Family and Community Engagement
Thursday, February 19, 2026

Ambassador session. <https://www.lausd.org/ambassadors>

Parent/Caregiver Workshops: The Division of School Mental Health is offering monthly workshops designed to support parents and caregivers in managing everyday stress and promoting their child's well-being. Each session focuses on an important topic: **Mental Health and Wellness on April 8**, *Description:* Learn practical strategies to support your child's emotional health, identify stressors, and encourage open conversations about feelings. **Anxiety on February 11**. *Description:* Understand what anxiety is, how it affects children, and explore effective ways to provide support. **Grief and Loss on March 11**. *Description:* Gain insight into how to help your child cope with and heal from loss. Workshops are held on the second Wednesday of each month from 1:00 p.m. to 2:00 p.m. via Zoom ([click here](#)), Webinar ID: 882 6906 7246, Password: workshop.

Clinic and Wellness Centers
School Mental Health
PARENT/CAREGIVER WORKSHOPS

Topic changes each month:

- Anxiety:** Caregivers will learn about anxiety and strategies to support their child.
- Grief and Loss:** Caregivers will learn how to support their child who has experienced a loss.
- Mental Health Wellness:** Caregivers will learn how to support their child with strategies for good mental health basics, identifying stressors and talking about feelings.

Parent Workshops 2nd Wednesday of the month
1:00 pm - 2:00 pm

Dates:
October 8 - Mental Health Wellness
November 12 - Anxiety
December 10 - Grief and Loss
January 16 - Mental Health Wellness
February 11 - Anxiety
March 11 - Grief and Loss
April 8 - Mental Health Wellness

Via Zoom
<https://lausd.zoom.us/j/8202047246>
Meeting ID: 882 6906 7246
Password: workshop

For further information, please contact
Irma Gonzalez at
(323) 246-7635

School Site Council (SSC) and English Learner Advisory Committees (ELAC): Schools have formed their SSCs and ELACs for the year. SFACE partnered with the Federal and State Education Programs (FSEP) office and the Multilingual and Multicultural Education Department to offer four ELAC and SSC Member Training opportunities on Saturdays (two in-person and two virtual) in the month of October. Participants learned about a variety of topics, including understanding budgets, Robert's Rules of Order, understanding data, School Plan for Student Achievement, and more. The training content was designed to help participants to better fulfill their roles as SSC and ELAC members at schools throughout LA Unified. To access the training materials, including video content visit bit.ly/ELAC-SSC-Training2526.

The Parent Portal is available for all parents and guardians to learn more about the program and progress of their children in a variety of different areas. Over 90% of Los Angeles Unified families are already connected! Learning about the different features of the Parent Portal allows parents to partner with their school communities to celebrate student achievement, ask focused questions, and identify needed support. Call the Los Angeles Unified Hotline at 213-443-1300 for help getting connected or for assistance with using the features.

The School Volunteer Program is a resource available for families and the community to offer their time, skills and knowledge to support Los Angeles Unified students. This year, Los Angeles Unified had over **38,000** processed volunteers serving in District schools. For more information about the School Volunteer Program, visit <https://www.lausd.org/volunteer>.



Parent Advisory Committee
Office of Student, Family and Community Engagement
Thursday, February 19, 2026

The Family Academy: The Family Academy is comprised of webinar, in-person and hybrid sessions designed to leverage families' assets to be empowered as they support their child from the early primary years to college and career success. This effort complements families' knowledge by connecting them to actionable learning focused on their child's development, as well as opportunities to accelerate their own careers and quality of livelihood. The schedules for offerings online and in the Regions with webinar links and summary information are available at <https://www.lausd.org/familyacademy>, along with past recorded content.

Equity Course Pathways: The Family Academy, in partnership with the Division of Adult and Career Education, offers cohort-centered courses known as Equity Course Pathways. The curriculum is organized as a 7-class course of experience where families engage in culturally relevant curriculum in a cohort learning environment, define family engagement, and develop their action plan to stay engaged in their child's education. Choose from one of four pathways: multilingual learners, Black and African American learners, youngest learners, and learners with exceptional needs. Click on the link to join the interest list and someone will contact you to enroll: LAUSDAdultEd.org/HelpYourChild.

Aeya Adult Education Virtual Academy **LAUSD**

Classes for Parents

Learn how to help your child succeed in School

We are offering four classes at no cost:

- African American and Black Learners** (Tuesdays & Thursdays)
Gain critical skills, build self-efficacy to improve language development, numeracy, and college and career readiness.
- Exceptional Learners** (Mondays & Thursdays)
Learn about the history of Special Education, parents' rights, the Individualized Education Program (IEP) and how to prepare for educational success.
- Youngest Learners** (Mondays & Tuesdays)
Learn the importance of language, literacy, numeracy, social-emotional and physical development and the importance of play.
- Multilingual Learners** (Tuesdays & Thursdays)
Learn about their students' backgrounds, the role of English proficiency, and how to support their success.

Classes meet over Zoom in the evenings 6:30 pm - 8:30 pm.

ONLINE Classes
Sign up today!
Scan the QR code, Call (323) 224-5995
Visit LAUSDAdultEd.org/HelpYourChild

Graduates will be honored by the District at the end of the school year!

Resources

- **Los Angeles Unified Student Wellness and Family Hotline:** Please continue to direct parents and students to this service provided for families. Trained District personnel are available to help on all health-related topics and are accessible by dialing the following number: 213-241-3840.
- **Los Angeles Division of Special Education School and Family Support Services Hotline:** The Division of Special Education provides support for families to access resources and gain information to help their children. For more information on services to support students with special needs, call (213) 241-6701.
- **Region Leaders:** Each child's school sits in a geographical Region in the Los Angeles Unified. To connect with District leaders in a specific Region or to learn more about the specific services offered in the Region, visit <https://www.lausd.org/regions>.
- **Board of Education Meetings:** The Los Angeles Unified Board of Education hosts meetings in person and will continue to broadcast meetings online. Visit the following webpage to learn how to speak during public comment: <https://www.lausd.org/boe>.



**Parent Advisory Committee
Office of Student, Family and Community Engagement
Thursday, February 19, 2026**

Responsibilities Assigned to the PAC

California Education Code ("Ed. Code") sections 52062 and 52063, require the establishment of a district-wide parent advisory committee to review and comment on the Local Control and Accountability Plan ("LCAP") for the governing board and the superintendent of a school district. (Ed. Code, § 52060} California Code of Regulations ("CCR") section 15495 defines "Parent Advisory Committee," as used in Ed. Code sections 52063 and 52069. A "Parent Advisory Committee" shall be composed of a majority of parents, as defined in subdivision (e), of pupils and include parents of pupils to whom one or more of the definitions in Education Code section 42238.01 apply." (5 CCR§ 15495, subd. [f])