



# The What, Why and How Of Parent Engagement To Support 100% Graduation For All Students

February 25, 2017

Presented by Alvaro Alvarenga  
Administrator  
Office of Parent and Community Services



## DISTRICT OBJECTIVES

1. Building a Solid Foundation
2. Proficiency For All
3. 100% Attendance
4. Parent, Community and Student Engagement
5. School safety

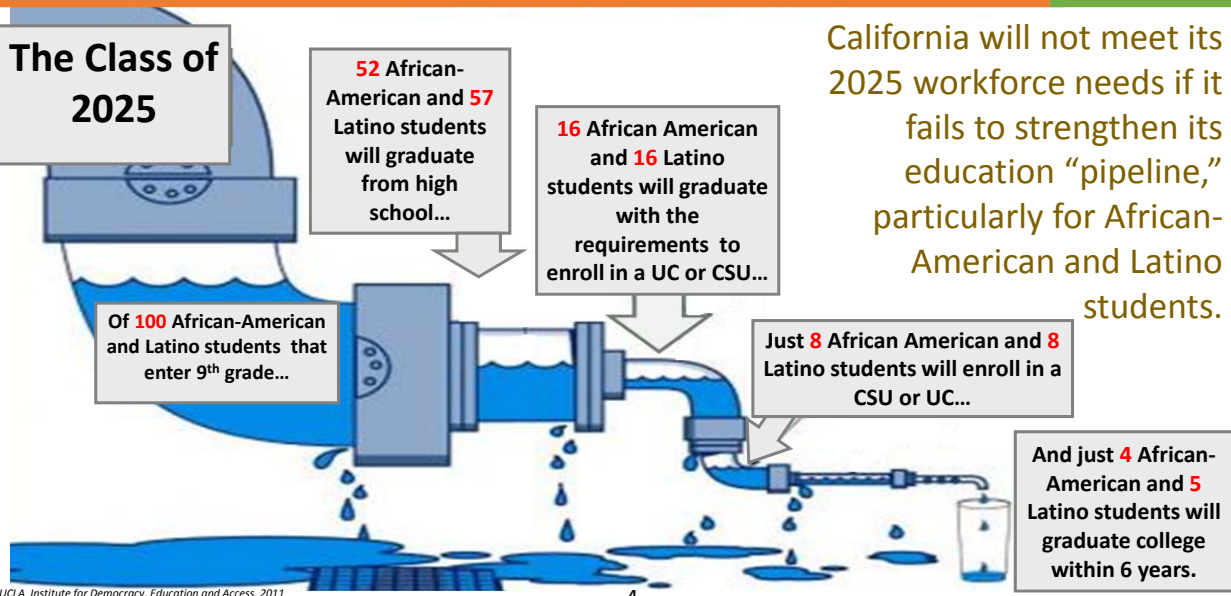
*Completion of  
A-G Requirements*

*Proficiency in  
A-G Courses*

*The A-G  
Catalysts*

## Why is parent engagement important in elementary, middle and high school?

### PARTNERSHIP TO STRENGTHEN THE PIPELINE





## BUILDING THE COLLEGE PIPELINE

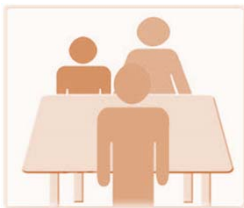


College readiness begins in pre-school with families engaged in the systems of learning. If families are engaged, students of all ages and backgrounds tend to:

- Earn higher grades and test scores
- Enroll in higher-level programs
- Be promoted and earn credits
- Adapt well to school and attend regularly
- Have better social skills and behavior
- Graduate and go on to higher education



## IMPACT OF SYSTEMIC PARENT ENGAGEMENT



Students' reading and math scores improved 40-50% faster when teachers:

- Met with families face-to-face
- Sent materials to parents providing strategies to help their child at home
- Telephoned routinely about progress

*Westat and Policy Studies Associates*



## THE REALITY TODAY



**Parents have choices.**

- **From 2005/2006 to 2014/2015, LAUSD enrollment has decreased by 156,000 students.**
- **More than ever, our work is one that must be customer-service driven, welcoming a partnership with the families that we serve.**




## IN SUMMARY...

**When families are engaged at home and at school, children do better in school *and* schools get better, pre-K through high school. These home/school partnerships increase opportunities for successful completion of A-G requirements and for access to colleges and universities.**





## KEY TEAM PARTNERS



# **How does the Office of the Parent and Community Services (PCS) help accomplish LAUSD's goals for parent engagement?**



## 2015-2016 FOCUS AREAS

### Parent, Community and Student Services

#### 2016-2017 FOCUS AREAS

Parent Training Modules

English Learner Master Plan Parent Training

Modified Consent Decree and Focused Trainings on Special Needs Students

Parent Access Support System portal (PASSport)

Parent Support for Instructional Programs

Parent and Family Center Staff Training/Bond Project

Local Control and Accountability Plan (LCAP) Stakeholder Engagement and Accountabilities

LAUSD Volunteer Program

Student Engagement

Professional Development for School Staff

School Site Council/English Learner Advisory Committee

Community Outreach/Partnerships

Partnership Action Teams

Title I Study Groups

Parent Advisory Committee/Community Advisory Committee/District English Learner Advisory Committee



## PARENT, COMMUNITY AND STUDENT ENGAGEMENT IN THE LCAP

### State Priority and LAUSD Goal 4

Improving parent feedback and survey participation



4 required parent workshops at each school-site



Increased student engagement and school connection



Measuring parent center efficacy and support for parents



Resources were provided to expand parent and student engagement at school sites



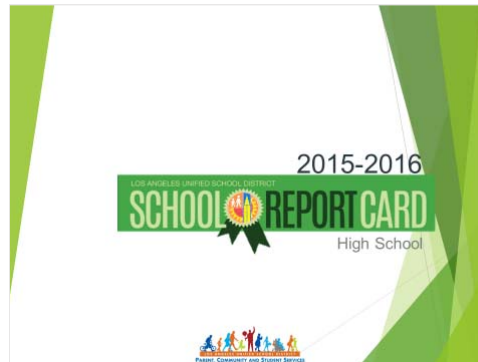


# SCHOOL EXPERIENCE SURVEY AND SCHOOL REPORT CARD

Improving parent feedback and survey participation



Providing extra support to schools with low completion rates



**DATA**  
 2015-2016:  
**INCREASE OF 13%**  
 from 40% to 53%  
 of LAUSD parents submitted the survey



# FOUR SCHOOL ACADEMIC PARENT WORKSHOPS

4 required parent workshops at each school-site



**DATA**  
 2015-2016:  
**INCREASE OF 19%**  
 86% of LAUSD schools provided 4 academic workshops to parents

### Parent Workshops

**Required Action/Important Information**

Schools are required to certify annually that all requirements of the Local Control Funding Formula have been completed. Please read the Local Control and Accountability Plan on the LAUSD website for more information. The first two workshops are mandatory. One is due on January 29, 2016; and the other is due on February 26, 2016. The third and fourth workshops can be done on the dates you select.

**Parent Workshop**

Topic: Changing Gr

Workshop Date 1\*:

Number of Participants:

Please upload Parent W:

**Select and Upload**

- Flyer
- Att. Roster
- Agenda

**ENGLISH LEARNER MASTER PLAN PART I**  
 2015-2016  
**Secondary Schools**  
 Identification, Assessment and Instructional Program Options

**LAUSD**  
**Graduation Requirements**  
 for the Classes of 2016 - 2019



# PARENT AND FAMILY CENTER SUPPORT



Measuring parent center efficacy and support for parents

---





DATA

2015-2016

- 616 Parent and Family Centers
- 111 Renovated into parent classrooms using Bond funds
- Monthly meetings



# RESOURCES TO EXPAND ENGAGEMENT



Resources were provided to expand parent and student engagement at school sites

---

DATA

2015-2016

- Provided school staff training and materials on early education and preparing for college
- PASSport pilot expansion











# INCREASED STUDENT ENGAGEMENT



Increased student engagement and school connection



## DATA

2015-2016

- Establishing Student Member of Board
- First *Young Women of Color* Conference
- Expanding the Village Movement

**Who supports LAUSD schools in their efforts to engage parents?**



## LOCAL DISTRICT PARENT AND COMMUNITY ENGAGEMENT

Local District  
Northwest  
(818) 654-3600

- GONZALO GARAY
- Joel Sanchez
- Ritma Estupinan
- Phyllis Spadafora

Local District  
Northeast  
(818) 252-5400

- ANTONIO REVELES
- Edwin Lopez
- Morena Camp
- Michelle Campos

Local District  
West  
(310) 914-2100

- TRACI CALHOUN
- Marisol Castro
- Edith Perez
- Anthony Williams
- Christina Guzy

Local District  
East  
(323) 224-3100

- GILBERTO MARTINEZ
- Susana Alcalá
- Laura Bañuelos
- Francisco Huerta

Local District  
South  
(310) 354-3400

- THERESA ARREGUIN
- David Samuel Barrett
- Deborah Siriwardene
- Veronica Obregon

Local District  
Central  
(213) 241-0100

- ISMAEL BERVER
- Leticia Vallejo
- Vilma Monzon
- Elsa Tinoco

**“ At the end of the day, the most overwhelming key to a child’s success is the positive involvement of parents.”**

*--Jane D. Hull*

### CONTACT INFORMATION:

**Alvaro Alvarenga**

**213-481-3350**

**[Alvaro.alvarenga@lausd.net](mailto:Alvaro.alvarenga@lausd.net)**