



**Community Advisory Committee  
Office of Student, Family and Community Engagement  
Wednesday, March 18, 2026**

**Greetings, Community Advisory Committee Members,**

Thank you for your continued dedication and active participation. Last month, we had the opportunity to learn what executive function is and why it plays a critical role in learning and behavior, and we identified common executive function challenges faced by students with IEPs, including those with learning disabilities or autism. We appreciate your ongoing commitment as we continue building this knowledge together. As a reminder, all **schools will be closed on Friday, March 27**, in observance of Cesar E. Chavez Day, and Spring Break will take place from **March 30 through April 3**.

**From Awareness to Action: SSC & ELAC Parent Workshop:** This virtual workshop helps parents move from learning about SSC and ELAC to making informed decisions. This virtual workshop will guide you through responsibilities and strategies to participate effectively. Whether you are a committee member or not, leave with knowledge and practical steps to influence decisions at your child's school. **Recordings: [English](#) | [Spanish](#)**

**School Experience Survey (SES)** is an annual survey administered in the spring to all LAUSD schools. Survey results provide schools with important feedback from teachers, staff, students, and parents. The SES provides valuable information to stakeholders about LAUSD school. Developed with input from parents, teachers, unions, and community-based organizations, the SES documents the perceptions of parents, staff and grade 4-12 students about their experiences at their school. **SES 2025-2026 Dates: Parents: February 2 to March 27, 2026; Students and Staff: February 16 to March 27, 2026.**

**CAC Elections for the 2026-2028 term taking place in March:**

The Division of Special Education and the Office of Student, Family and Community Engagement have been conducting Community Advisory Committee elections for the 2026-2028 term in March of 2026. Elections are being held by region and by category. Parent and community elections are held in virtual format via Zoom with in-person technology support for those who may need access to a device or the internet. For the flyers by category and region with the election dates, times, guidelines, format, and Zoom meeting information, please visit the CAC website at [lausd.org/CAC](http://lausd.org/CAC).

Community Advisory Committee Election Dates for the 2026-2028 Term Elecciones del Comité Asesor Comunitario para el Término de 2026-2028						
Date Fecha	Time Hora	Category and Vacancies* Categorías y Vacancies*	Zoom ID Id de Zoom	Information Información	Parent/Family Support Site Sitio de Apoyo para Padres/Familias	Notes Notas
Monday, March 2, 2026 Lunes, 2 de marzo 2026	8 am to 12 pm	Region West (all of Student with Disability 2 Representatives and 1 Alternate Padre de Estudiante con Necesidades Especiales de la Región Oeste 2 Representantes y 1 Alternante	904 976 848 904 976 848	Parent/Family Support Office Oficina de Apoyo de la Región Oeste Conference Room 6 600 South Main St Los Angeles, CA 90028	Parent/Family Support Site Sitio de Apoyo para Padres/Familias	
Tuesday, March 3, 2026 Martes, 3 de marzo 2026	8 am to 12 pm	Virtual Academy Parent of Student with Disability 1 Alternate Padre de Estudiante con Necesidades Especiales de la Academia Virtual 1 Alternante	904 976 848 904 976 848	Student Family and Community Engagement Office Oficina para la Participación de Estudiantes, Familias y Comunidad	Parent/Family Support Site Sitio de Apoyo para Padres/Familias	
Monday, March 9, 2026 Lunes, 9 de marzo 2026	8 am to 12 pm	Region West Parent of Student with Disability 2 Representatives and 1 Alternate Padre de Estudiante con Necesidades Especiales de la Región Oeste 2 Representantes y 1 Alternante	904 976 848 904 976 848	Parent/Family Support Office Oficina para la Participación de Estudiantes, Familias y Comunidad	Parent/Family Support Site Sitio de Apoyo para Padres/Familias	
Monday, March 9, 2026 Lunes, 9 de marzo 2026	4 pm to 7 pm	Special Education Teacher 1 Representative and One School Staff 1 Representative y Otro Personal Docente	904 976 848 904 976 848	Parent/Family Support Office Oficina para la Participación de Estudiantes, Familias y Comunidad	Parent/Family Support Site Sitio de Apoyo para Padres/Familias	n/a
Wednesday, March 11, 2026 Miércoles, 11 de marzo 2026	8 am to 12 pm	Region East Parent of Student with Disability 2 Representatives and 1 Alternate Padre de Estudiante con Necesidades Especiales de la Región Este 2 Representantes y 1 Alternante	904 976 848 904 976 848	Parent/Family Support Office Oficina para la Participación de Estudiantes, Familias y Comunidad	Parent/Family Support Site Sitio de Apoyo para Padres/Familias	
Wednesday, March 11, 2026 Miércoles, 11 de marzo 2026	4 pm to 8 pm	Student with Disability or with a 504 Plan 2 Representatives and 1 Alternate Estudiante con una Necesidad o con Plan 504 2 Representantes y 1 Alternante	904 976 848 904 976 848	Parent/Family Support Office Oficina para la Participación de Estudiantes, Familias y Comunidad	Parent/Family Support Site Sitio de Apoyo para Padres/Familias	
Monday, March 23, 2026 Lunes, 23 de marzo 2026	8 am to 12 pm	Region South Parent of Student with Disability 2 Representatives and 1 Alternate Padre de Estudiante con Necesidades Especiales de la Región Sur 2 Representantes y 1 Alternante	904 976 848 904 976 848	Parent/Family Support Office Oficina para la Participación de Estudiantes, Familias y Comunidad	Parent/Family Support Site Sitio de Apoyo para Padres/Familias	
Monday, March 23, 2026 Lunes, 23 de marzo 2026	4 pm to 8 pm	Parent of a Student in the Special Education Program 1 Representative and 1 Alternate Padre de un Estudiante en el Programa de Educación Especial 1 Representante y 1 Alternante	904 976 848 904 976 848	Parent/Family Support Office Oficina para la Participación de Estudiantes, Familias y Comunidad	Parent/Family Support Site Sitio de Apoyo para Padres/Familias	
Tuesday, March 24, 2026 Martes, 24 de marzo 2026	4 pm to 8 pm	Adult with Disability 1 Alternate Adulto con Necesidad 1 Alternante	904 976 848 904 976 848	Parent/Family Support Office Oficina para la Participación de Estudiantes, Familias y Comunidad	Parent/Family Support Site Sitio de Apoyo para Padres/Familias	
Wednesday, March 25, 2026 Miércoles, 25 de marzo 2026	4 pm to 8 pm	Community-Based Organization 1 Alternate Organización Basada en la Comunidad 1 Alternante	904 976 848 904 976 848	Parent/Family Support Office Oficina para la Participación de Estudiantes, Familias y Comunidad	Parent/Family Support Site Sitio de Apoyo para Padres/Familias	

For more details, visit / Para más detalles, visite [lausd.org/CAC](http://lausd.org/CAC).  
\* Based on membership and attendance information as of February 13, 2026.  
\* Basado en información de asistencia y membresía a fecha del 13 de febrero de 2026.



**Community Advisory Committee  
Office of Student, Family and Community Engagement  
Wednesday, March 18, 2026**

**LAUSD Division of Special Education Family Resource Fairs:**

Join these resource fairs on select Saturdays in April and May where families will have the opportunity to connect with district teams, community partners, and service providers to learn about resources, supports, and tools that strengthen learning at home and support student success. Access to district and community resources that support students with disabilities. Learn about strategies and tools that support learning at home and get family-friendly materials and resources to take home. Access the flyer [here](#) for dates and locations at each Region. For more information, please contact the Division of Special Education at [dse.families@lausd.net](mailto:dse.families@lausd.net). We hope to see you there!



**United and Inspired: The Music Center’s 47<sup>th</sup> Annual Very Special Arts Festival Family Day:**

Join this exciting, free-admission festival full of activities, music, art and fun at this annual event, put together by The Music Center in collaboration with other organizations, including LAUSD. There will be art activities, workshops and performances. Put this festival on your family calendar; it takes place on **Saturday, April 18, 2026 from 11:00 a.m. to 2:30 p.m.** Parking is available at 135 N. Grand Ave. For more information, visit [MusicCenter.org/FamilyDay](http://MusicCenter.org/FamilyDay).



**Black Student Achievement Program (BSAP) Town Hall Meeting:**

Join the Educational Transformation Office’s BSAP team for the Spring Town Hall Meeting to learn about important updates and engage in a conversation. This Listening Session is designed to uplift the voices of parents and caregivers from BSAP schools as we work together to improve support and implementation strategies. Discuss issues that matter to you and share your ideas and suggestions. This virtual meeting will take place via Zoom (Zoom ID 835 9751 3572) at <https://bit.ly/4sjXLYX> on Thursday, March 26, from 5:30 to 6:30 p.m.



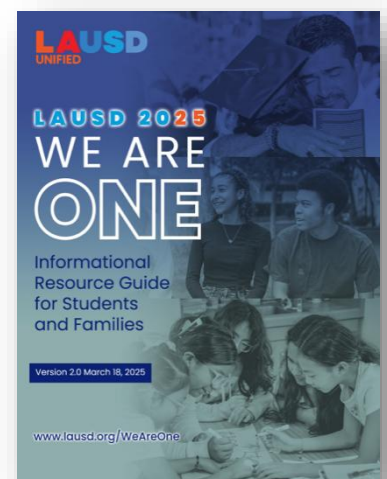


**Community Advisory Committee**  
**Office of Student, Family and Community Engagement**  
**Wednesday, March 18, 2026**

**LAUSD Choices** is the District's public school enrollment and choice program that offers families the opportunity to apply to a wide range of specialized schools and programs beyond their neighborhood school. Through LAUSD Choices, families can explore educational options that align with their child's interests, strengths, and learning needs. LAUSD Choices includes programs and services such as Magnet Schools, Dual Language Education Programs, School for Advanced Studies (SAS), Highly Gifted Programs, Affiliated Charter Schools, and Zones of Choice. These programs are designed to promote academic excellence, innovation, equity, and access to diverse learning environments across the District. **Registration for the 2026–2027 school year will open on February 2, 2026, at 8:00 a.m.** Applications submitted after the deadline will be considered late and added to the waitlist in the order they are received. The **Zones of Choice application for both the 2025–2026 and 2027–2028 school years will remain open through September 30, 2026.** For more information and to apply, families are encouraged to visit the LAUSD Choices website and review program eligibility and timelines carefully. <https://choices.lausd.net/>.  
\*Brochure comes in other languages.

**Food Assistance:** In these challenging times, we continue to come together as a community to support our LAUSD children and families. The Los Angeles Unified School District is committed to ensuring that every child has access to nutritious meals. Free supper meals are available for **LAUSD students, ages 1–18**, Monday through Friday after school, at most Los Angeles Unified school campuses. Please note that all meals must be eaten on school grounds. For more information and to find a list of school, weekend, and holiday meal distribution sites, please visit [lausd.org/foodhelp](https://lausd.org/foodhelp). If you have any questions, contact the **LAUSD Family Hotline at (213) 443-1300**, available 24 hours a day, 7 days a week. Together, we remain committed to supporting our students and families.

**LAUSD 2025: We Are One:** If you or your family need assistance regarding virtual school options, transportation, immigration, health, wellness, or housing, please call **LAUSD's Family Hotline at (213) 443-1300**. The hotline is available 24 hours a day, 7 days a week. The [LA Unified 2025: We Are One](#) campaign formalizes and amplifies the District's efforts to cultivate welcoming learning environments for all students. We Are One Know Your Rights Workshops are available for families and schools across L.A. to





**Community Advisory Committee  
Office of Student, Family and Community Engagement  
Wednesday, March 18, 2026**

come together for these powerful weekly workshops designed to inform, support, and empower our communities every 1<sup>st</sup> & 3<sup>rd</sup> Friday mornings from 9:00 – 10:30 a.m. and 2<sup>nd</sup> & 4<sup>th</sup> Friday evenings from 5:00 – 6:30 p.m. Zoom Information: Zoom URL: [bit.ly/WeAreOneLAUSD](https://bit.ly/WeAreOneLAUSD), Zoom ID: 895 5755 5227.

**Strategic Plan Pillar III: Engagement and Collaboration Highlights**

**Special Education Workshops:** The Division of Special Education has various resources available for parents, so they can take advantage of every opportunity to be an active partner in their child’s education. Workshops and training are offered throughout the school year, covering various topics related to the needs of students with disabilities and the many ways parents can support their child both in and out of the classroom. In addition to workshops and training sessions, District- and community-sponsored events supportive of students and parents are available. For more information, visit <https://sped.lausd.org/parents>.

**Region Ambassadors:** The Los Angeles Unified Region Ambassadors will be valuable advocates and guides who inform their school communities about District services and resources. Each segment of learning is hosted in a hybrid format to meet the preference of diverse families so they can learn in person and online. If interested in learning more

about supports for English Learners, for students with special needs, or the Local Control and Accountability Plan, which is the District’s plan for use of its general funds, consider attending a Region Ambassador session. <https://www.lausd.org/ambassadors>

**Parent/Caregiver Workshops:** The Division of School Mental Health has been offering monthly workshops designed to support parents and caregivers in managing everyday stress and promoting their child’s well-being. There is one workshop left in this series. Each session focused on an important topic, and the topic for the remaining workshop is **Mental Health and Wellness** on **April 8**, *Description:* Learn practical strategies to support your child’s emotional health, identify stressors, and encourage open conversations about feelings. Workshops are held on the second Wednesday of each month from 1:00 p.m. to 2:00 p.m. via Zoom ([click here](#)), Webinar ID: 882 6906 7246, Password: workshop.





**Community Advisory Committee**  
**Office of Student, Family and Community Engagement**  
**Wednesday, March 18, 2026**

**The Parent Portal** is available for all parents and guardians to learn more about the program and progress of their children in a variety of different areas. Over 90% of Los Angeles Unified families are already connected! Learning about the different features of the Parent Portal allows parents to partner with their school communities to celebrate student achievement, ask focused questions, and identify needed support. Call the Los Angeles Unified Hotline at 213-443-1300 for help getting connected or for assistance with using the features.

**The School Volunteer Program** is a resource available for families and the community to offer their time, skills and knowledge to support Los Angeles Unified students. This year, Los Angeles Unified had over **40,776** processed volunteers serving in District schools. For more information about the School Volunteer Program, visit <https://www.lausd.org/volunteer>.

**The Family Academy:** The Family Academy is comprised of webinar, in-person and hybrid sessions designed to leverage families' assets to be empowered as they support their child from the early primary years to college and career success. This effort complements families' knowledge by connecting them to actionable learning focused on their child's development, as well as opportunities to accelerate their own careers and quality of livelihood. The schedules for offerings online and in the Regions with webinar links and summary information are available at <https://www.lausd.org/familyacademy>, along with past recorded content.

**Equity Course Pathways:** The Family Academy, in partnership with the Division of Adult and Career Education, offers cohort-centered courses known as Equity Course Pathways. The curriculum is organized as a 7-class course of experience where families engage in culturally relevant curriculum in a cohort learning environment, define family engagement, and develop their action plan to stay engaged in their child's education. Choose from one of four pathways: multilingual learners, Black and African American learners, youngest learners, and learners with exceptional needs. Click on the link to join the interest list and someone will contact you to enroll: [LAUSDAdultEd.org/HelpYourChild](https://LAUSDAdultEd.org/HelpYourChild).

**Resources**

- **Los Angeles Unified Student Wellness and Family Hotline:** Please continue to direct parents and students to this service provided for families. Trained District personnel are available to help on all health-related topics and are accessible by dialing the following number: 213-241-3840.



**Community Advisory Committee**  
**Office of Student, Family and Community Engagement**  
**Wednesday, March 18, 2026**

- **Los Angeles Division of Special Education School and Family Support Services**  
**Hotline:** The Division of Special Education provides support for families to access resources and gain information to help their children. For more information on services to support students with special needs, call (213) 241-6701.
- **Region Leaders:** Each child's school sits in a geographical Region in the Los Angeles Unified. To connect with District leaders in a specific Region or to learn more about the specific services offered in the Region, visit <https://www.lausd.org/regions>.
- **Board of Education Meetings:** The Los Angeles Unified Board of Education hosts meetings in person and will continue to broadcast meetings online. Visit the following webpage to learn how to speak during public comment: <https://www.lausd.org/boe>.

**Responsibilities Assigned to the CAC in the California Education Code, Section 56194**

The community advisory committee shall have the authority and fulfill the responsibilities that are defined for it in the local plan. The responsibilities shall include, but need not be limited to, all the following:

- a) Advising the policy and administrative entity of the special education local plan area regarding the development, amendment, and review of the local plan. The entity shall review and consider comments from the community advisory committee.
- b) Recommending annual priorities to be addressed by the plan.
- c) Assisting in parent education and in recruiting parents and other volunteers who may contribute to the implementation of the plan.
- d) Encouraging community involvement in the development and review of the local plan.
- e) Supporting activities on behalf of individuals with exceptional needs.
- f) Assisting in parent awareness of the importance of regular school attendance.
- g) Supporting community involvement in the parent advisory committee established pursuant to Section 52063 to encourage the inclusion of parents of individuals with exceptional needs to the extent these pupils also fall within one or more of the definitions in Section 42238.01.