



District English Learner Advisory Committee
Office of Student, Family and Community Engagement
Thursday, April 30, 2026

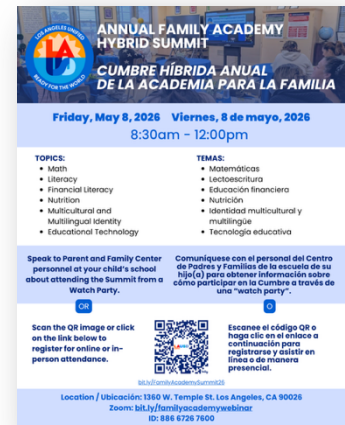
Greetings, District English Learner Advisory Committee Members,

I would like to take a moment to thank you for your continued dedication and active participation in providing LCAP input, as well as your engagement in discussions with the Multilingual Multicultural Education Department and Federal and State Education Programs.

As we approach the end of the school year, we encourage you to review your student's progress and continue supporting their learning by using the Family Guides below to help them stay engaged and prepared over the summer. During the summer, consider visiting your local library to explore books and take part in the many activities and programs available to support ongoing learning.

2026 Annual Family Academy Hybrid Summit: Where Families Learn, Connect, and Thrive – Together

This dynamic hybrid event features six engaging workshops with practical tools, fresh ideas, and meaningful strategies you can use right away at home. Explore ways to spark literacy, strengthen math thinking, build healthy digital habits, raise money-smart children, and celebrate language, culture, and family traditions as powerful learning opportunities. Aligned with the LAUSD Title I Parent and Family Engagement Policy, this event strengthens family-school partnerships and equips families to actively support student success. You'll leave feeling energized, confident, and equipped with easy-to-use resources that build stronger connections at home and brighter futures for every child.



May 8, 2026, 8:30 am - 12:00 pm

Register to let us know you are attending virtually or in-person here: <https://bit.ly/FamilyAcademySummit26>

Registration is NOT required.

Zoom: <https://bit.ly/familyacademywebinar>

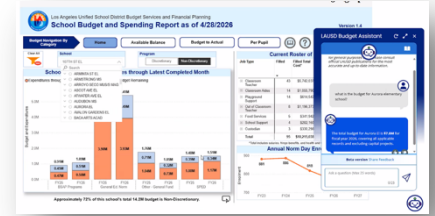
ID: 886 6726 7600



**District English Learner Advisory Committee
Office of Student, Family and Community Engagement
Thursday, April 30, 2026**

“Modern Budget Transparency for Student Achievement”

Thank you for participating in Monday’s LAUSD Board of Education adopted the **“Modern Budget Transparency for Student Achievement”** resolution. This resolution calls for the integration of Artificial Intelligence into the budget tool to enable users to actively engage by asking questions and receiving accurate, real-time responses. Information

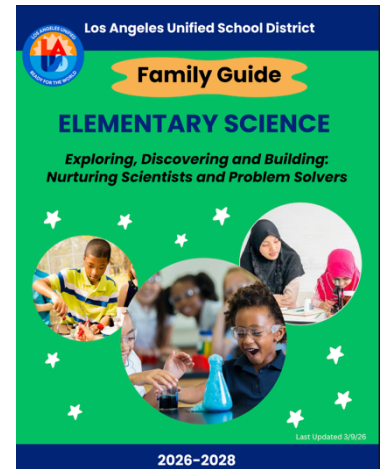


Technology Services that have led to the development of the AI component (chatbot), which is now ready for Beta test.

Family Guide Elementary Science

Exploring, Discovering and Building: Nurturing Scientist and Problem-solvers

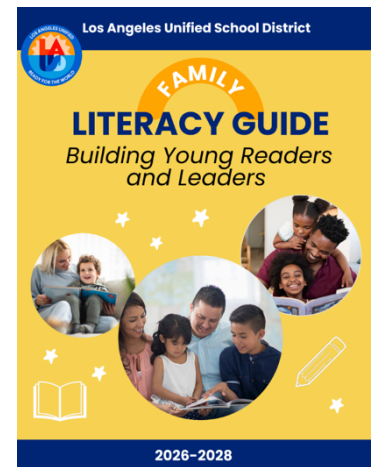
Families play a powerful role in helping students grow as curious thinkers and problem solvers in science. When schools and families work together, children build confidence, stronger understanding and excitement about how the world works. This guide helps bridge learning between home and school, making it easier to support your child’s science learning.



Family Literacy Guide

Building Confident Readers and Student Leaders in Grades 4–6

Families play a powerful role in helping upper-elementary students grow as readers and writers. When schools and families work together, children in grades 4–6 make the strongest gains in language, literacy, and confidence. This guide connects home and school, making it easier to support your child’s learning.





**District English Learner Advisory Committee
Office of Student, Family and Community Engagement
Thursday, April 30, 2026**

Family Guide Elementary Mathematics

Developing Confident Problem Solvers

Family Guide to Supporting Mathematics Learning at Home
Math learning happens everywhere: in games, recipes, sports scores, building projects, and “How many more do we need?” moments. When children learn that math is about making sense, they become more confident and willing to try—even when problems feel challenging.

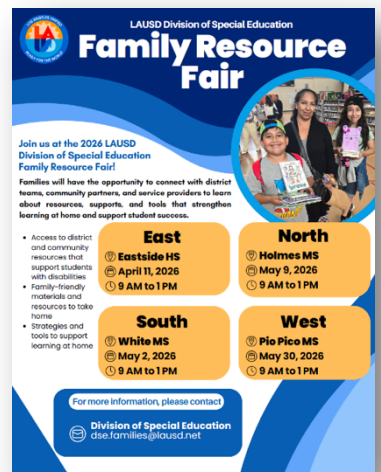
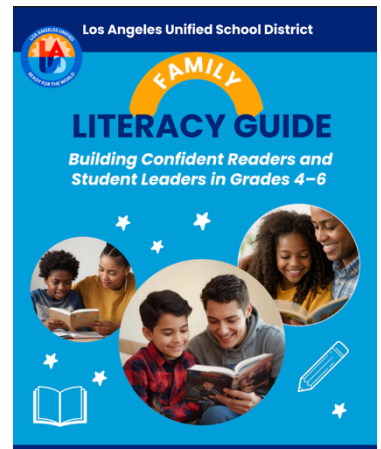
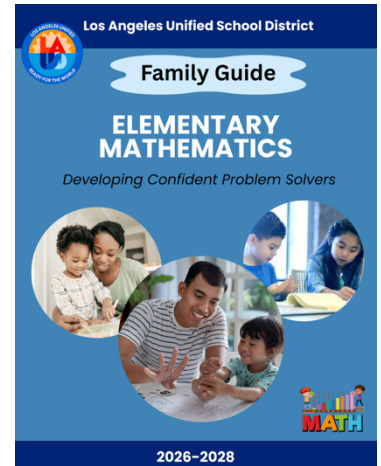
Family Literacy Guide

Families play one of the most powerful roles in helping children grow as readers and writers.

Families play one of the most powerful roles in helping children grow as readers and writers. This guide was created to bridge the connection between home and school, making it easier for families to support children’s learning and includes: (1) Explanations of what children are learning in literacy at different grade levels. (2) Age-appropriate literacy activities that you can do at home—whether it’s during homework time, while reading bedtime stories, or even in the car on the way to school. (3) Supports aligned to high-quality programs your child’s teacher uses in the classroom: Amplify Core Knowledge Language Arts (CKLA) and University of Florida Literacy Institute (UFLI) Foundations, and i-Ready Reading. (4) Family-friendly tips to help you understand literacy reports and assessment results, so you know exactly how your child is progressing.

LAUSD Division of Special Education Family Resource Fairs:

Join these resource fairs on select Saturdays in April and May where families will have the opportunity to connect with district teams, community partners, and service providers to learn about resources, supports, and tools that strengthen learning at home and support student success. Access to district and community resources that support students with



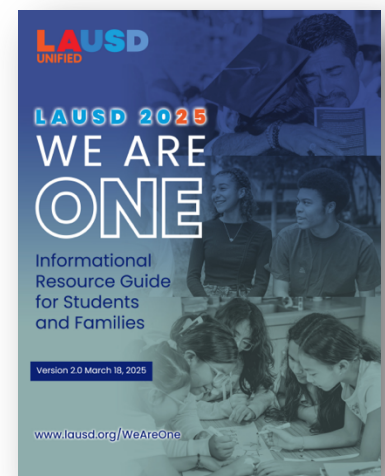


District English Learner Advisory Committee
Office of Student, Family and Community Engagement
Thursday, April 30, 2026

disabilities. Learn about strategies and tools that support learning at home and get family-friendly materials and resources to take home. Access the flyer [here](#) for dates and locations at each Region. For more information, please contact the Division of Special Education at dse.families@lausd.net. We hope to see you there!

[LAUSD Choices](#) is the District's public school enrollment and choice program that offers families the opportunity to apply to a wide range of specialized schools and programs beyond their neighborhood school. Through LAUSD Choices, families can explore educational options that align with their child's interests, strengths, and learning needs. LAUSD Choices includes programs and services such as Magnet Schools, Dual Language Education Programs, School for Advanced Studies (SAS), Highly Gifted Programs, Affiliated Charter Schools, and Zones of Choice. These programs are designed to promote academic excellence, innovation, equity, and access to diverse learning environments across the District. **Registration for the 2026–2027 school year will open on February 2, 2026, at 8:00 a.m.** Applications submitted after the deadline will be considered late and added to the waitlist in the order they are received. The **Zones of Choice application for both the 2025–2026 and 2027–2028 school years will remain open through September 30, 2026.** For more information and to apply, families are encouraged to visit the LAUSD Choices website and review program eligibility and timelines carefully. <https://choices.lausd.net/>.
*Brochure comes in other languages.

LAUSD 2025: We Are One: If you or your family need assistance regarding virtual school options, transportation, immigration, health, wellness, or housing, please call **LAUSD's Family Hotline at (213) 443-1300**. *The hotline is available 24 hours a day, 7 days a week.* The [LA Unified 2025: We Are One](#) campaign formalizes and amplifies the District's efforts to cultivate welcoming learning environments for all students. We Are One Know Your Rights Workshops are available for families and schools across L.A. to come together for these powerful weekly workshops designed to inform, support, and empower our communities every 1st & 3rd Friday mornings from 9:00 – 10:30 a.m. and 2nd & 4th Friday evenings from 5:00 – 6:30 p.m. Zoom Information: Zoom URL: bit.ly/WeAreOneLAUSD, Zoom ID: 895 5755 5227.





District English Learner Advisory Committee
Office of Student, Family and Community Engagement
Thursday, April 30, 2026

Food Assistance: In these challenging times, we continue to come together as a community to support our LAUSD children and families. The Los Angeles Unified School District is committed to ensuring that every child has access to nutritious meals. Free supper meals are available for **LAUSD students, ages 1–18**, Monday through Friday after school, at most Los Angeles Unified school campuses. Please note that all meals must be eaten on school grounds. For more information and to find a list of school, weekend, and holiday meal distribution sites, please visit lausd.org/foodhelp. If you have any questions, contact the **LAUSD Family Hotline at (213) 443-1300**, available 24 hours a day, 7 days a week. Together, we remain committed to supporting our students and families.



Strategic Plan Pillar III: Engagement and Collaboration Highlights

The Parent Portal is available for all parents and guardians to learn more about the program and progress of their children in a variety of different areas. Over 90% of Los Angeles Unified families are already connected! Learning about the different features of the Parent Portal allows parents to partner with their school communities to celebrate student achievement, ask focused questions, and identify needed support. Call the Los Angeles Unified Hotline at 213-443-1300 for help getting connected or for assistance with using the features.

The School Volunteer Program is a resource available for families and the community to offer their time, skills and knowledge to support Los Angeles Unified students. This year, Los Angeles Unified had over **42,211** processed volunteers serving in District schools. For more information about the School Volunteer Program, visit <https://www.lausd.org/volunteer>.

The Family Academy: The Family Academy is comprised of webinar, in-person and hybrid sessions designed to leverage families' assets to be empowered as they support their child from the early primary years to college and career success. This effort complements families' knowledge by connecting them to actionable learning focused on their child's development, as well as opportunities to accelerate their own careers and quality of livelihood. The schedules for offerings online and in the Regions with webinar links and summary information are available at <https://www.lausd.org/familyacademy>, along with past recorded content.



District English Learner Advisory Committee
Office of Student, Family and Community Engagement
Thursday, April 30, 2026

Equity Course Pathways: The Family Academy, in partnership with the Division of Adult and Career Education, offers cohort-centered courses known as Equity Course Pathways. The curriculum is organized as a 7-class course of experience where families engage in culturally relevant curriculum in a cohort learning environment, define family engagement, and develop their action plan to stay engaged in their child's education. Choose from one of four pathways: multilingual learners, Black and African American learners, youngest learners, and learners with exceptional needs. Click on the link to join the interest list and someone will contact you to enroll: LAUSDAdultEd.org/HelpYourChild.

Resources

- **Los Angeles Unified Student Wellness and Family Hotline:** Please continue to direct parents and students to this service provided for families. Trained District personnel are available to help on all health-related topics and are accessible by dialing the following number: 213-241-3840.
- **Los Angeles Division of Special Education School and Family Support Services Hotline:** The Division of Special Education provides support for families to access resources and gain information to help their children. For more information on services to support students with special needs, call (213) 241-6701.
- **Region Leaders:** Each child's school sits in a geographical Region in the Los Angeles Unified. To connect with District leaders in a specific Region or to learn more about the specific services offered in the Region, visit <https://www.lausd.org/regions>.
- **Board of Education Meetings:** The Los Angeles Unified Board of Education hosts meetings in person and will continue to broadcast meetings online. Visit the following webpage to learn how to speak during public comment: <https://www.lausd.org/boe>.



District English Learner Advisory Committee
Office of Student, Family and Community Engagement
Thursday, April 30, 2026

Responsibilities: DELAC shall advise the LAUSD Board of Education and the on the following tasks:

1. Development of a district master plan for education programs and services for English learners. The district master plan will take into consideration the school site master plans.
2. Conducting of a district-wide needs assessment on a school-by-school basis.
3. Establishment of district program, goals, and objectives for programs and services for English learners.
4. Development of a plan to ensure compliance with any applicable teacher and/or teacher aide requirements.
5. Review and comment on the school district reclassification procedures.
6. Review and comment on the written notifications required to be sent to parents and guardians.
7. If the DELAC acts as the English learner parent advisory committee under California Education Code Sections 52063(b)(1) and 52062(a)(2), the DELAC shall also review and comment on the development or annual update of the Local Control and Accountability Plan (LCAP). *

* Under the LCFF, districts with at least 50 English learners and whose total enrollment includes at least 15% English learners must establish a DELAC, and that DELAC must carry out specific responsibilities related to the LCAP.



District English Learner Advisory Committee
Office of Student, Family and Community Engagement
Thursday, April 9, 2026