

Dyslexia Update:

State Legislation
LAUSD Policy and Action Plan
Section XI Literacy

Diana Inouye, Coordinator, TK-12 Instruction
February 21, 2018



Division of Instruction
Achieve, Believe, Collaborate and Serve

“The best thing for me about being dyslexic is my mom’s spirit.
She’s such a positive person and that is such a powerful influence on me.
She was dyslexic as well, but no one picked it up; no one knew what was going on.

- Isobel, Wales

-“Dyslexia is My Superpower”





Hi. My name is Adan. I am a 5th grader at 135th Street Elementary School. I have dyslexia, and I'm learning how to read.



Middle School Voices

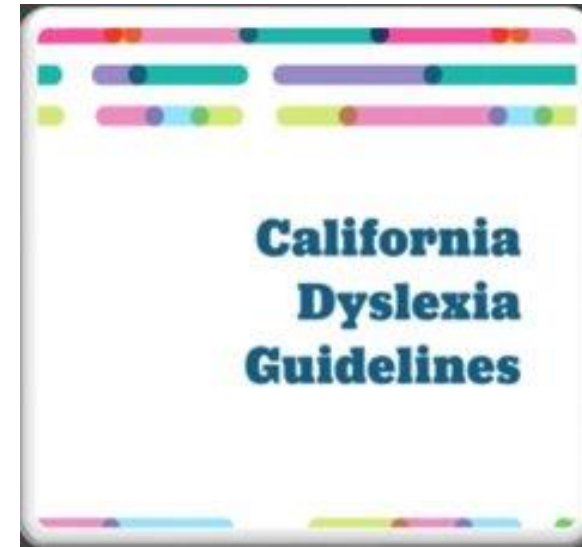
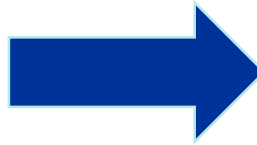


California Dyslexia Legislation

October 2015, Governor Brown
signed into law Assembly Bill 1369



California Dyslexia Guidelines AB 1369
Published August 2017



Plans to improve educational services and
develops program guidelines for students with dyslexia

Dyslexia Laws in the US

Dyslexia Laws in the US 2017



All but 6 states now have some kind of dyslexia law on the books.



Source: <http://www.dyslexicadvantage.org/dyslexia-laws-2017/>

General Education Students First

- Students who have dyslexia are “general education students” first
- Can be educated in general education classrooms
- Benefit from a wide variety of supports
- Students with dyslexia **sometimes** require special education.



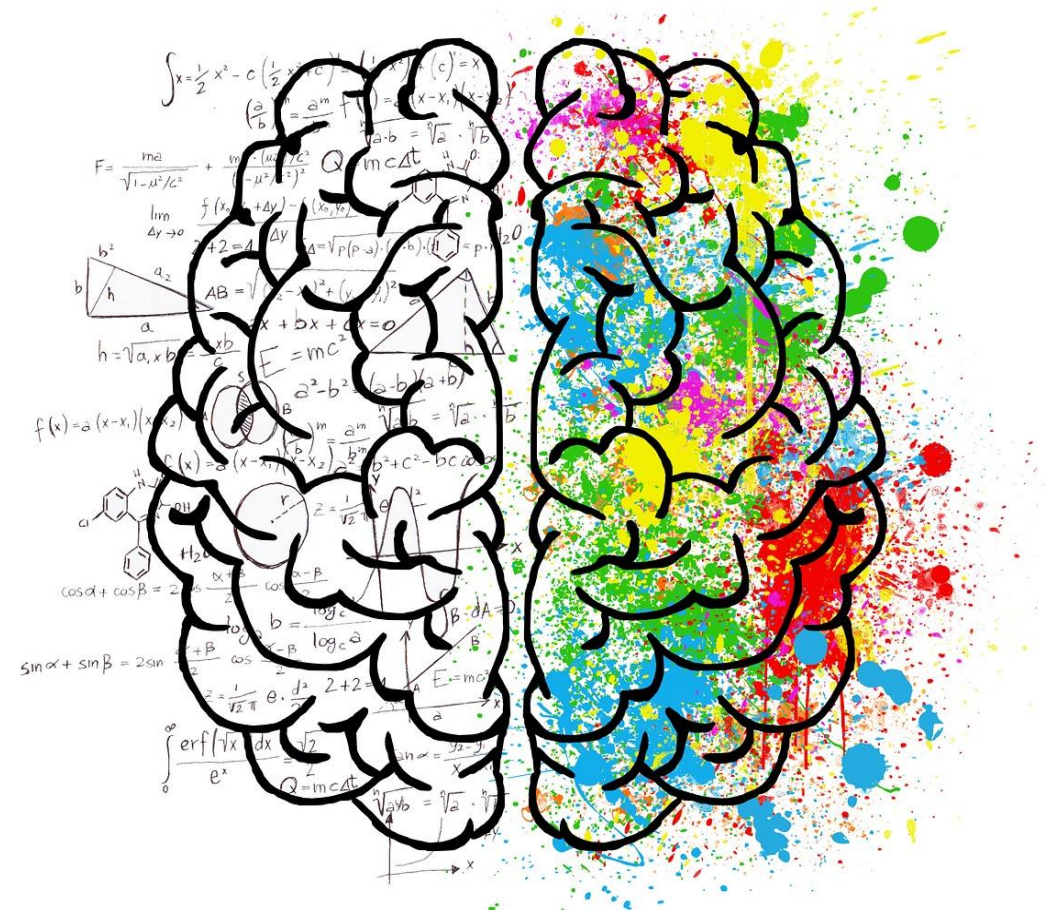
What is Dyslexia?

Neurobiological disorder

Language-based learning disability

Exists on a continuum

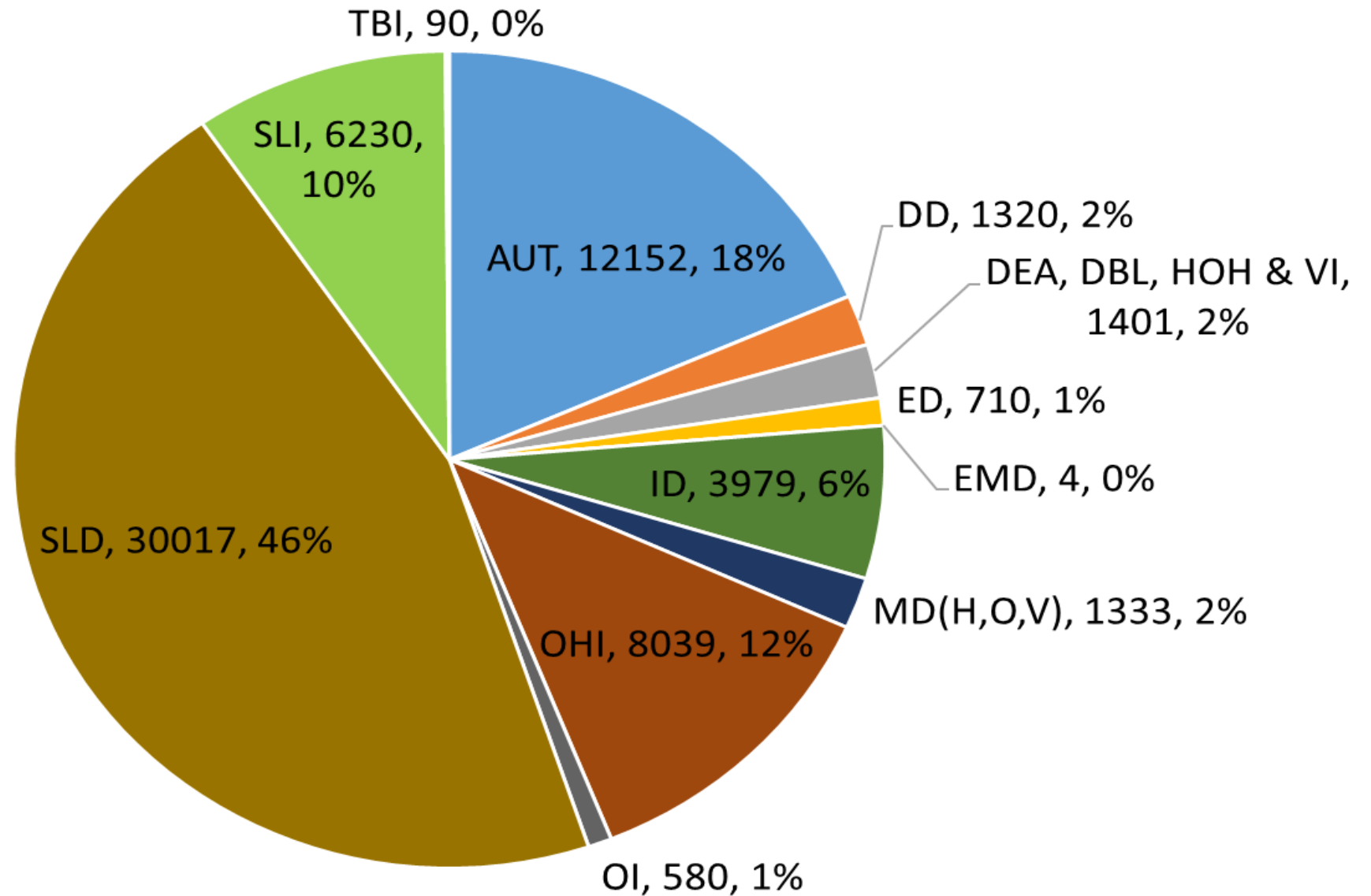
Characterized by difficulties in word recognition, reading fluency, spelling, writing skills



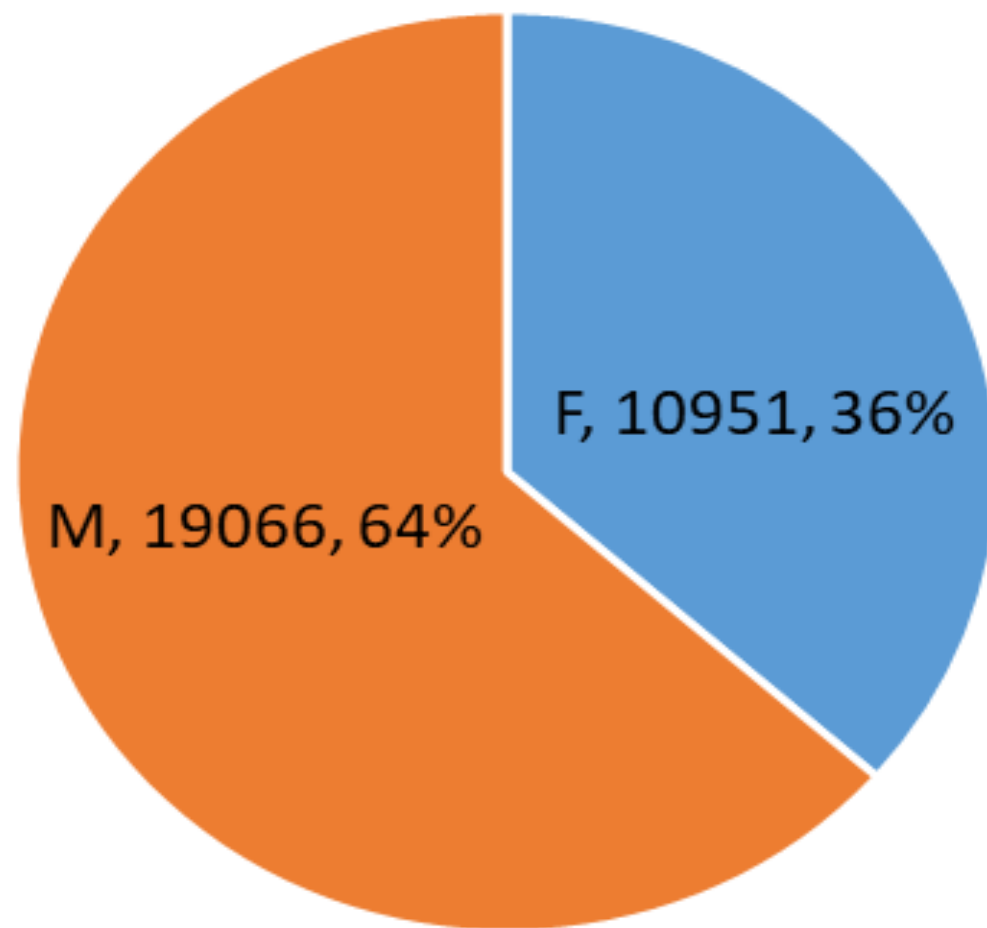
**Specific Learning
Disability**

DYSLEXIA

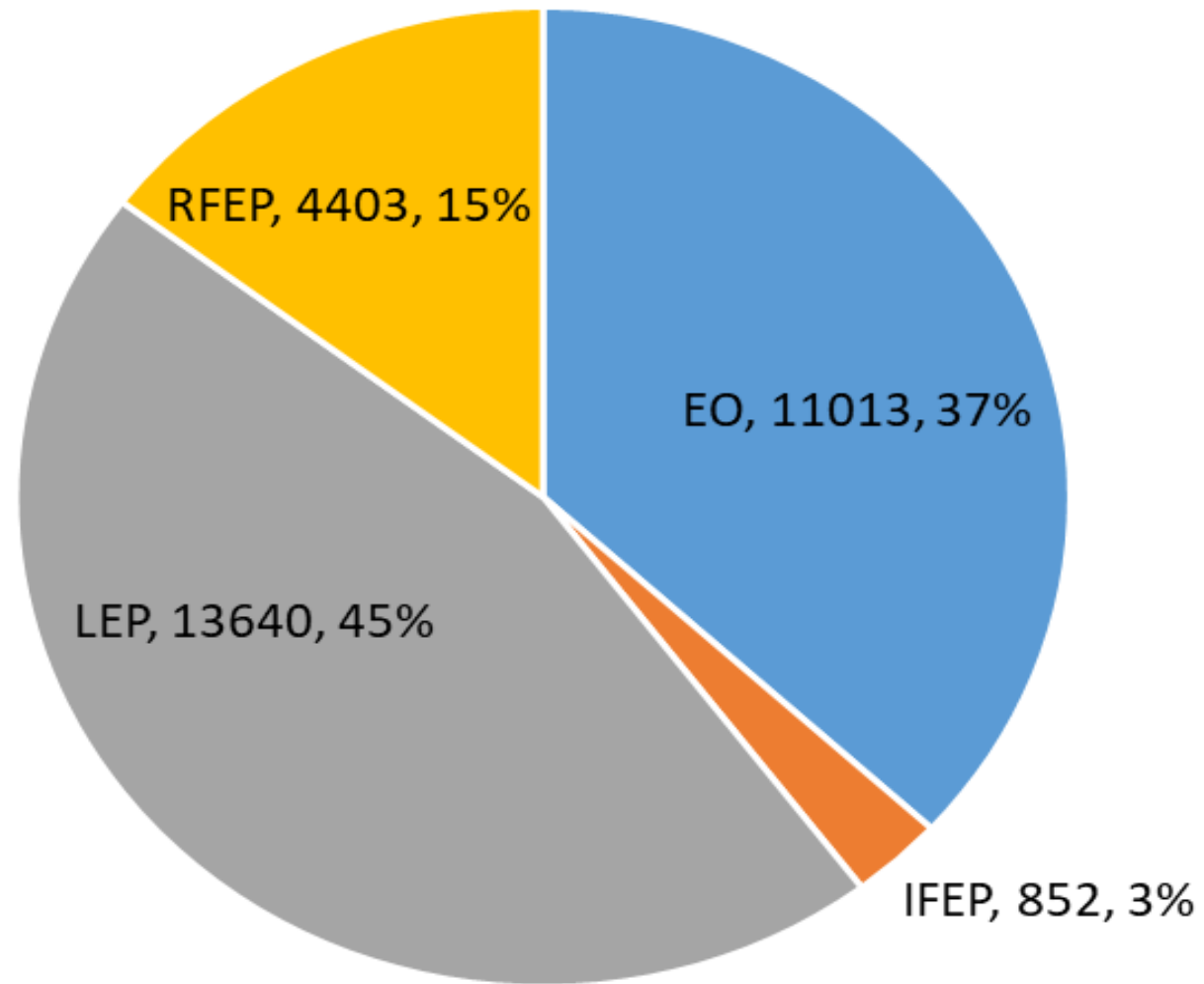
SPED Students: Eligibility Distribution 2016-17



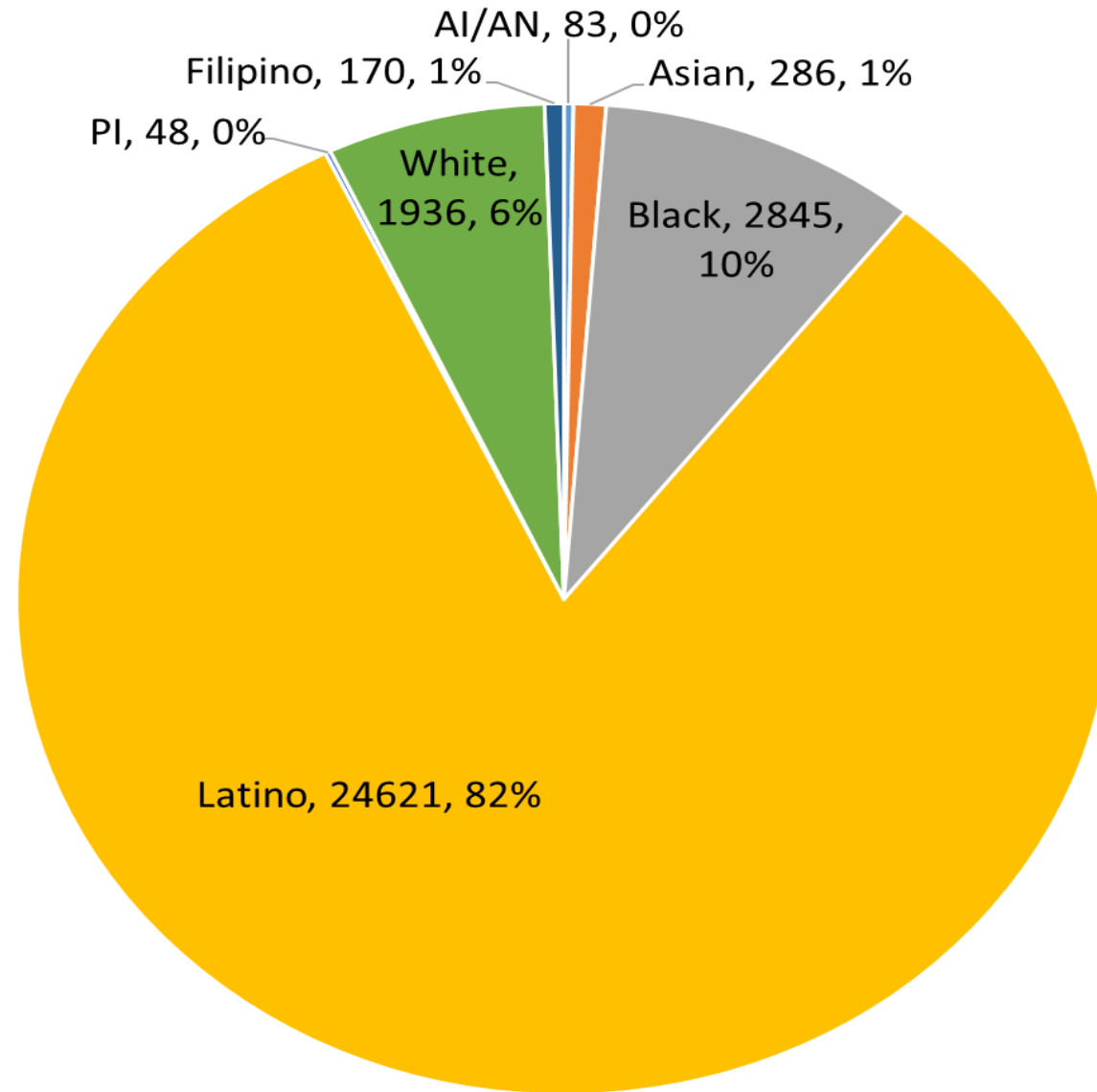
SLD Eligibility: Gender Distribution 2016-17



SLD Eligibility: Language Classification Distribution 2016-17



SLD Eligibility: Ethnicity Distribution 2016-17



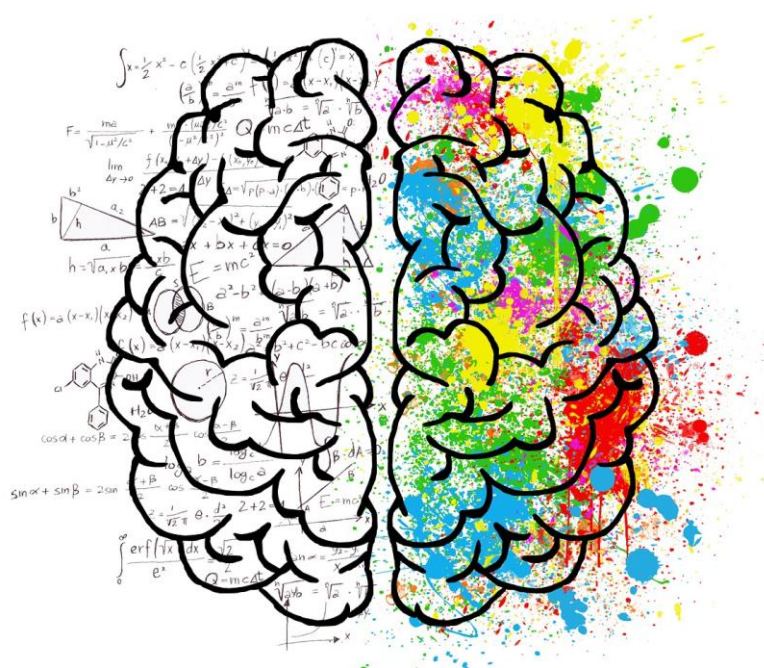
LOS ANGELES UNIFIED SCHOOL DISTRICT
BOARD ROOM



Board Resolution 101- 16/17

Recognizing and Addressing
the Educational
Implications of Dyslexia in
LAUSD Schools





Dyslexia Support Action Plan

Division of Instruction

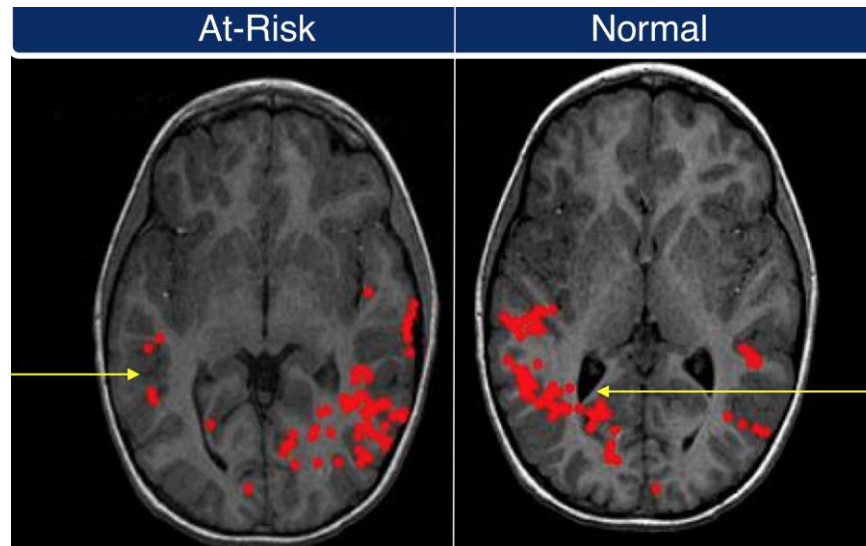
Division of Special Education

Launch general awareness campaign

Dyslexia Action Plan



- Celebrated *October Dyslexia Awareness Month*
- LA Daily dyslexia awareness article, newsletter articles
- Published *Dyslexia General Awareness* module
- Expert speakers from research centers on dyslexia



LAUSD in the Spotlight

Dyslexia Action Plan

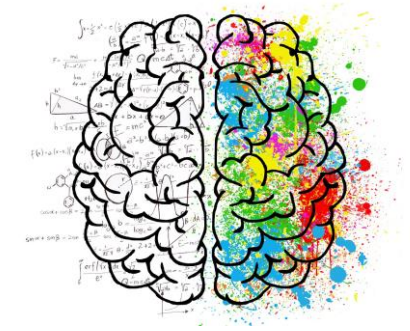


- National and state dyslexia parent advocacy groups partner with District
- State publication article on LAUSD plans
- UCLA 2017 Cognitive Diversity Summit



Develop Dyslexia Assessment Policy

Dyslexia Action Plan



- Published assessment bulletin on dyslexia
- Train School Psychologists, APEIS, Principals, Teachers



SELPA Local Plan Section XI

Revisions to reflect AB 1369
legislation

Draft review by Parent
Committee



Dyslexia Action Plan



Training Topics

- Day 1 – Structured Literacy, Differentiated Diagnostic Instruction, Data Analysis
- Day 2 – Evidence Based Practices and Activities
- *Ongoing training provided via training videos and virtual coaching

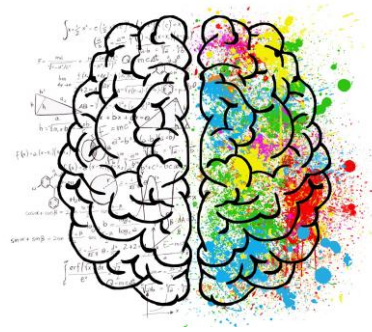
Train LAUSD Parents

Dyslexia Action Plan



Train LAUSD Staff

Dyslexia Action Plan



Train teachers and administrators in early indicators and evidence-based practices to address dyslexia within a structured literacy approach



**Dyslexia
Action**

Taking Action • Changing Lives

Training and Professional Development



Structured Literacy's
Evidence-Based Teaching Principles

Source: This infographic was created by Carolyn D. Cowen and is posted on the IDA Website.

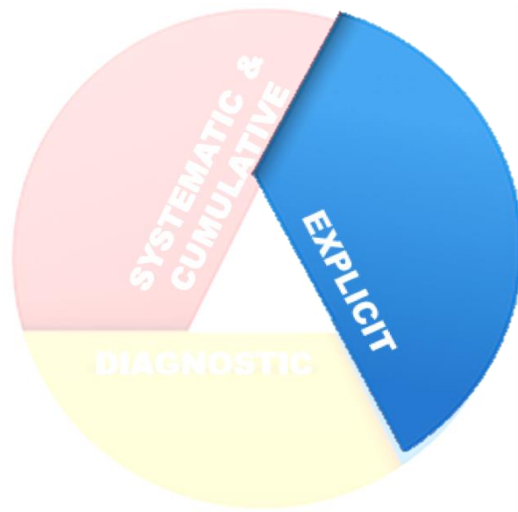


Structured Literacy's
Evidence-Based Teaching Principles

Teachers must be adept at individualizing instruction based on careful and continuous assessment, both informal and formal.



Source: This infographic was created by Carolyn D. Cowen and is posted on the IDA Website.

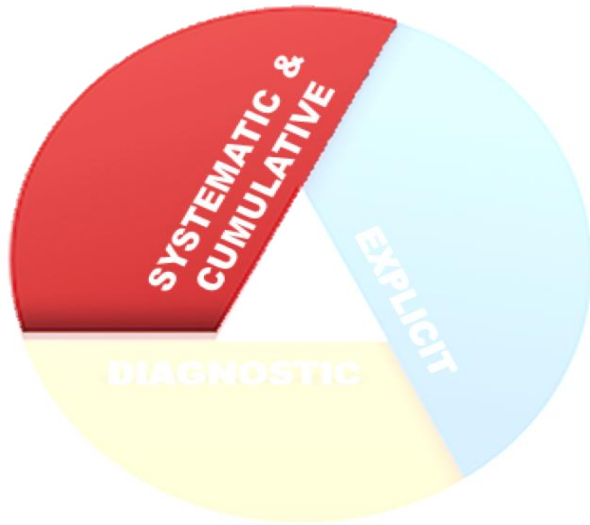


Structured Literacy's
Evidence-Based Teaching Principles

Structured Literacy instruction
requires direct teaching of
concepts with continuous
student-teacher interaction
and does not assume students
deduce concepts.

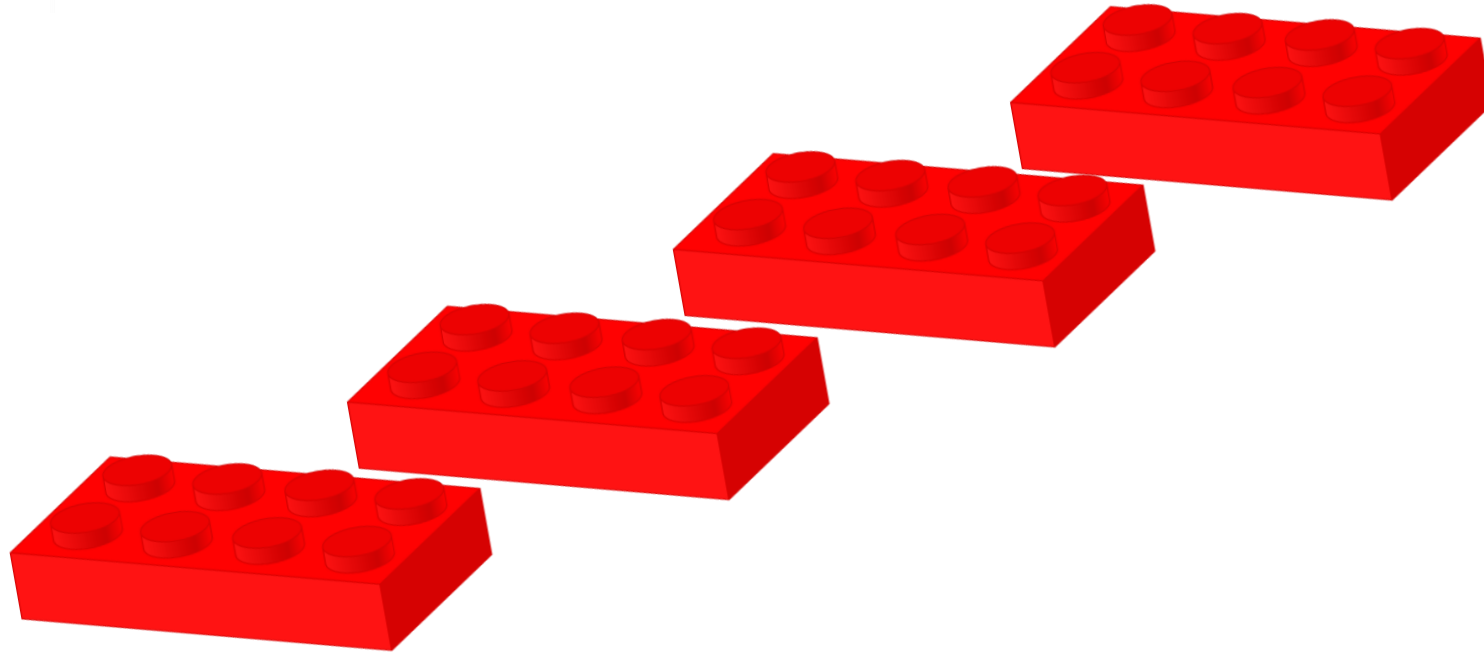


Source: This infographic was created by Carolyn D. Cowen and is posted on the IDA Website.

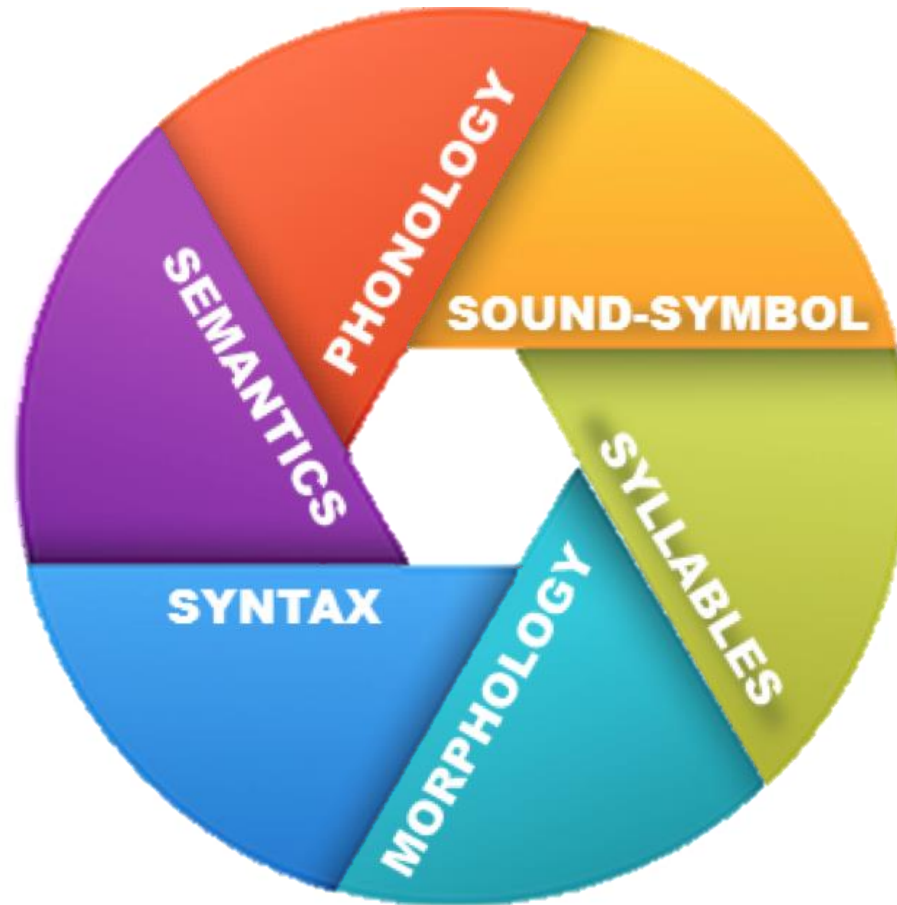


Structured Literacy's
Evidence-Based Teaching Principles

Organization of material follows the logical order of language from easiest concepts and elements and progresses methodically to more difficult. Each step is based on concepts previously learned.



Source: This infographic was created by Carolyn D. Cowen and is posted on the IDA Website.



**Structured Literacy's
Evidence-Based
Elements**

Source: This infographic was created by Carolyn D. Cowen and is posted on the IDA Website.

Think-Ink-Pair-Share

Think about your child/children...



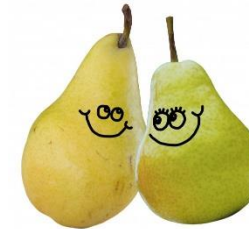
Think

Find and circle at least 3 strengths your child has on the strengths list. On the challenge line, **write** 1 thing your child finds challenging.



Ink

Share with the person next to you what you circled and wrote.



pair

Anyone who wants to can **share out** to the whole group.



share

Advocate



Dyslexia Outlook

People with dyslexia can be very bright and often capable or gifted in different areas:



Art



Computer
science



Design



Drama



Electronics



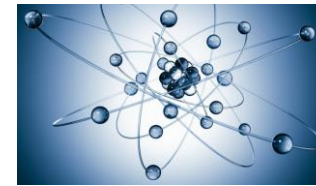
Math



Mechanics



Music



Physics



Sports

Assistive Technology and Supports



Audiobooks



Word prediction software



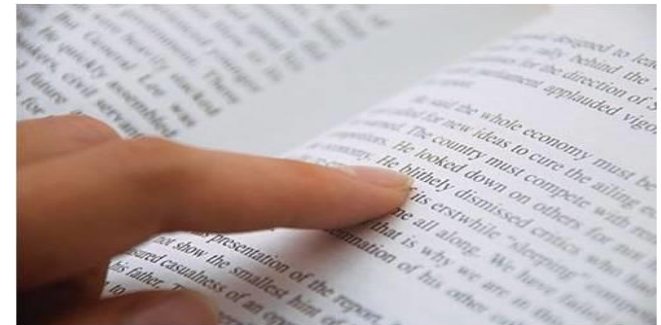
Apps



Ruler



Highlighter



Finger

Accommodations



Extra time



Quiet workspace

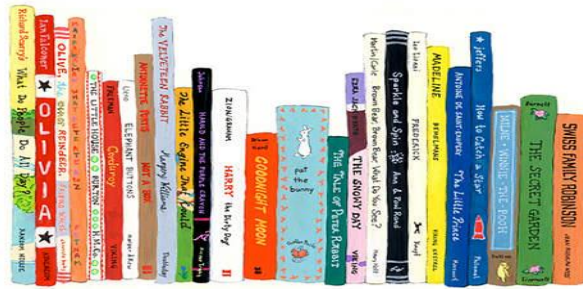


Recording lesson

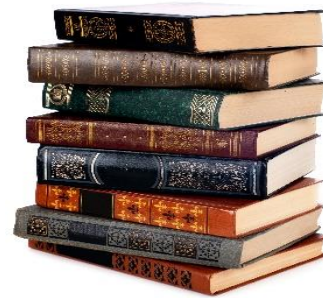


Giving verbal answers

Reading



Different levels



Variety



Comic books



Magazines



News

Social Emotional Support



“Mental Health Day”



Confidence



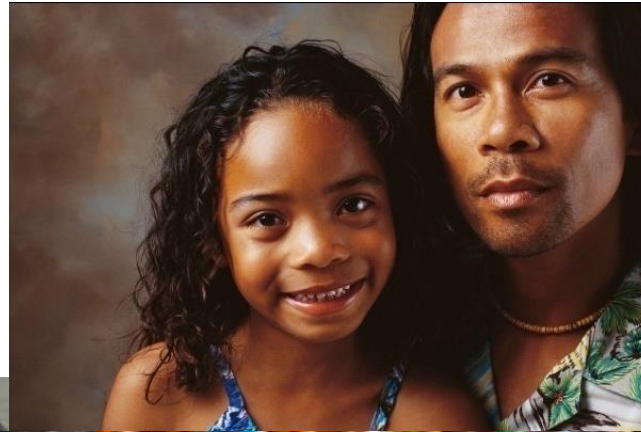
Interest and passion



Journal

“No matter who you are or where you come from, all students should dream without limits.”

LAUSD Superintendent Dr. Michelle King, 2016-18





We are all here to
support student success!

