



**NATIONAL EDUCATION**

— EQUITY LAB —

“

Talent is  
evenly  
distributed,  
opportunity  
is not.

*We aim to  
change that.*

We deliver and support college-credit bearing courses from top universities into historically underserved high schools, at scale.



"I knew I was smart, but  
I was never told where  
it would take me."

-Donovan Blount, Queens, N.Y.  
Current SUNY University of Buffalo, Junior.

Article Via

**The New York Times**



"The fact that I can do this, a girl from  
Flint, the place with the dirty water, it  
really makes me feel empowered...I've had  
teachers tell me that I wouldn't be  
anything, that I was just a stereotype."

-Latisha Jones, Flint, Michigan.  
Current Spelman College, Sophomore.

Article Via

**The New York Times**

# Agenda

- 1) Introduction and Welcome!
- 2) Ed Equity Lab Model Overview
- 3) Recap of LAUSD<>Ed Equity Lab Partnership to Date
- 4) Preview of 24/25 School Year Courses!
- 5) Share Spring 2024 Timeline and Nomination form

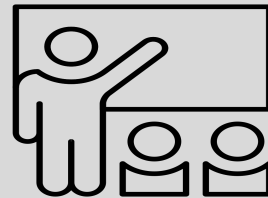


# Our Model

## 1 College Credit-Bearing Courses from Top Colleges and Universities



## 2 Classroom Co-Teachers



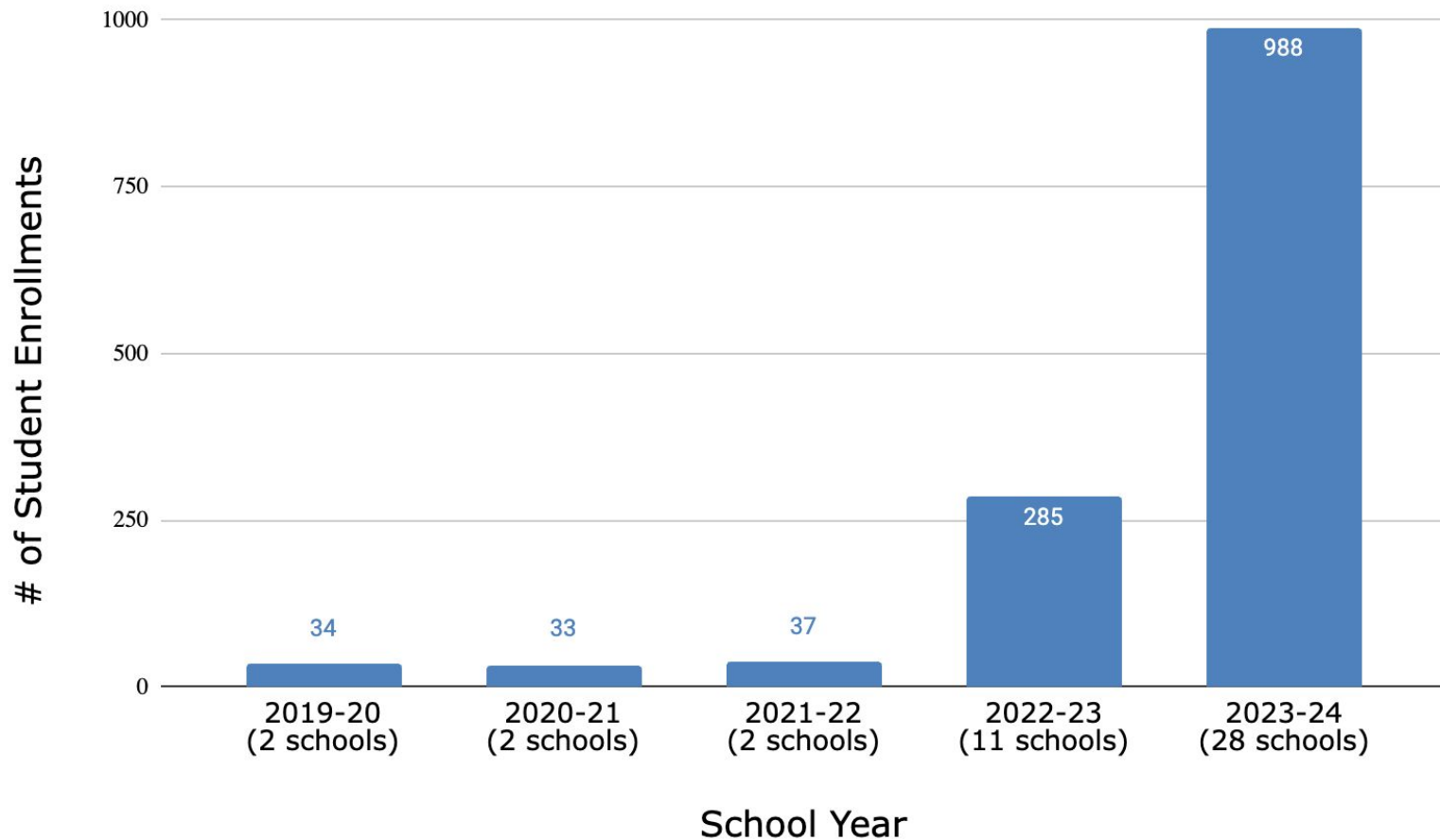
## 3 University Teaching Fellows



## 4 Supports & Community



# LAUSD Partnership Growth



# LAUSD Scholars Spotlight!

- **121 scholars** have been inducted into the Ed Equity Lab Honor Society!
  - John Marshall Senior High
  - Linda Esperanza Marquez High A  
Huntington Park Inst. of Applied Med.
  - Marquez High School of Social Justice
  - Nathaniel Narbonne Senior High
  - Thirty-Second Street USC Performing Arts
  - Benjamin Franklin Senior High
  - John F. Kennedy High
  - Huntington Park Senior High School
  - Belmont Senior High
  - Woodrow Wilson Senior High School
  - James A. Garfield Senior High
  - Valley Academy of Arts & Sciences
  - John C. Fremont Senior High School
  - Reseda Charter High School
  - Santee Education Complex
  - San Pedro Senior High School
  - Thomas Jefferson High School
  - Diego Rivera Learning Complex Green Design STEAM Academy



# SY 2024-25 Course Opportunities

All courses are career pathways courses; and college-credit bearing with official university transcript provided.

## English, Psych, Soc



**BROWN**  
*Introduction to Literature*

**HARVARD**  
*Inaugural Design*



*Poetry in America*



**BROWN**  
*Law and Literature*

 **Wesleyan University**

*English Composition: Screenwriting*

 **Wesleyan University**

*Introduction to Psychology*



*Professional Communication*



*Clothing*



*Introduction to Social Work*

## Comp Sci and Tech



*Intro to Computer Science*

 **Wesleyan University**

*Intro to Programming*



*Data Science / Analytics*



*Tech Data Bias and Ethics*



*From Data to Decisions: How to answer Society's Thorniest Causal Questions*

## Math and Science



*Essentials of Personal Finance*



**BROWN**  
*Introduction to Engineering*



**HOWARD UNIVERSITY**  
*College Algebra*



**Cornell University**  
*Environmental Science: Earthquakes*



**Cornell University**  
*Climate Change and You, the Engineer*



**BARNARD**  
*Introduction to Microeconomics*



**Cornell University**  
*Introduction to Business Management*



**HOWARD UNIVERSITY**  
*Intro to Leadership Studies*

**UC San Diego**

*Bending the Curve Climate Resiliency Program*



**Cornell University**  
*Statistical Foundations*

## History and Civics



**Georgetown University**  
*Map of the Modern World: School of Foreign Service*



**MOREHOUSE COLLEGE**  
*Social Problems*



**Georgetown University**  
*International Relations*



**Stanford University**  
*Between Malcolm X and Martin Luther King, Jr*



**HOWARD UNIVERSITY**  
*Introduction to Environmental Studies*



**BROWN**  
*Intro to Public Policy*



*Introduction to Public Health*



**Stanford University**  
*Searching Together for the Common Good*



**Wesleyan University**  
*Live Like a Philosopher: Ethics and Civics in the Ancient World*

# 2024-25 Priority Registration Timeline

Monday, March  
4, 2024

## Priority onboarding round begins!

- *Schools that have nominated will receive access to their onboarding portals to review courses their school has been matched with.*
- *Schools must confirm their courses by March 8th.*

Monday, March  
11, 2024

## Priority student applications open!

- 10th, 11th, and 12th grade students may apply

Monday, March  
25, 2024

## Priority student rostering launches!

- Only students with submitted applications may be rostered

Friday, April 5,  
2024

## Priority onboarding round ends!

- *Fall 2024 rosters must be finalized by this date.*





# 2024-25 LAUSD Priority Nomination Progress



## Next Step

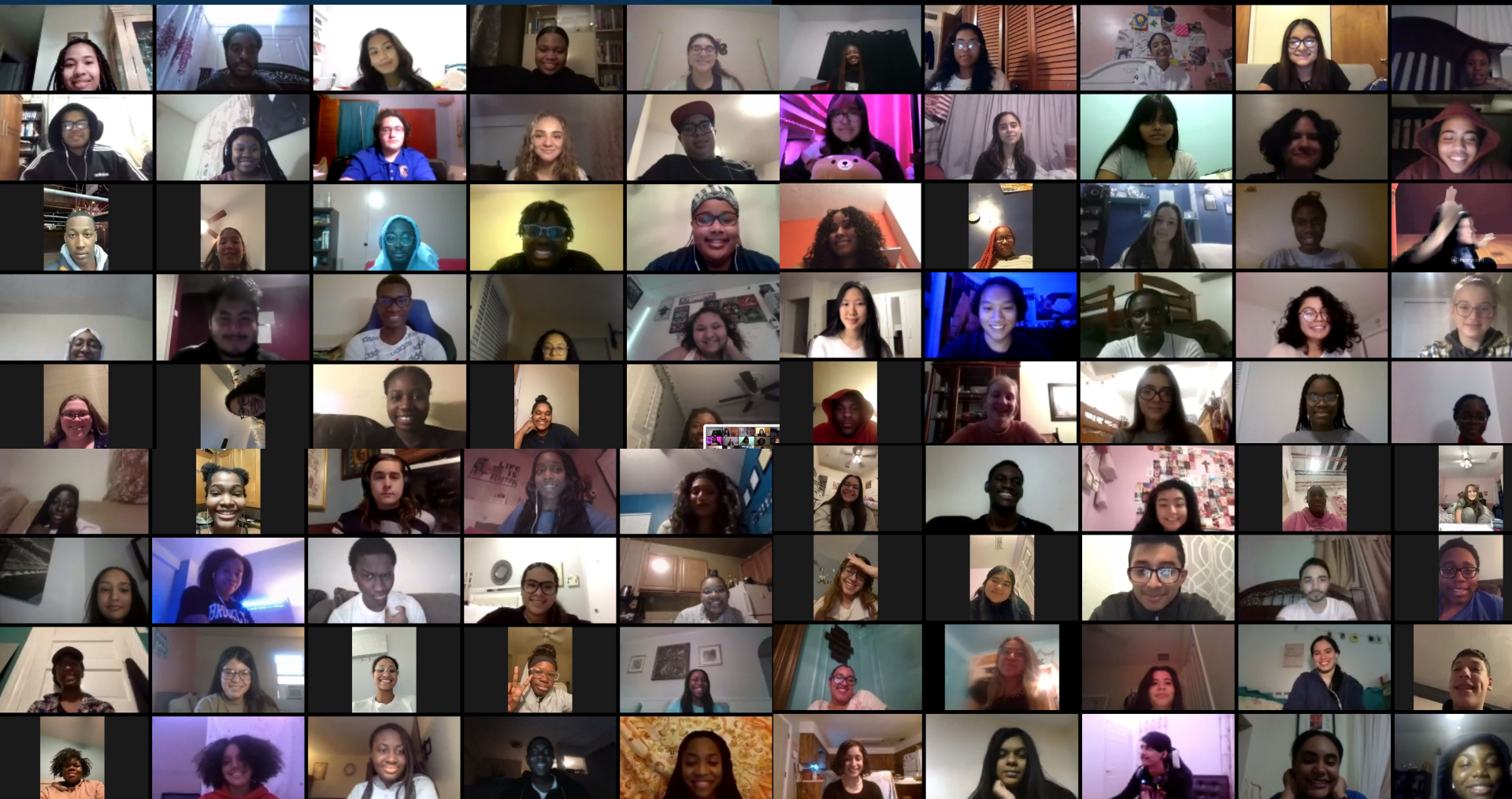
Complete our [nomination form](#) to have your school considered for this opportunity.

Scan the QR code here to sign up:



Questions? Email [admissions@edequitylab.org](mailto:admissions@edequitylab.org).





Welcome to the Ed Equity Lab family!

# Q&A