



"Just because I am a foster child,  
doesn't mean I'll quit on school."  
-C.H., 18 years old

"I was 100 credits behind, but with  
my counselor's help, I was able to  
make them up and graduate on time."  
-M.D., 17 years old

"If the people I've met while in foster  
care like my teachers, counselors, and  
social workers didn't see my potential  
and look past my label as a foster  
child, I really don't know where I  
would be right now."  
-L.S., 17 years old

Los Angeles Unified School District  
Student Support Programs  
Dr. Denise A. Miranda, Director  
(213) 241-3840

## SPECIALIZED STUDENT SERVICES

### Administrative Coordinator

Erin Campbell, MSW, M.Ed. | [emc5498@lausd.net](mailto:emc5498@lausd.net)

### Headquarters Administration

Zarmenee Helwani, Specialist |  
[zarmenee.helwani@lausd.net](mailto:zarmenee.helwani@lausd.net)

### North Region

Sylvia Corral, Coordinator | [scorra2@lausd.net](mailto:scorra2@lausd.net)  
Donna Lee, Specialist | [dahye.song@lausd.net](mailto:dahye.song@lausd.net)

### East Region

Elizabeth Guzman, Coordinator | [exg9516@lausd.net](mailto:exg9516@lausd.net)  
Sandra Lopez, Specialist | [sel6736@lausd.net](mailto:sel6736@lausd.net)

### South Region

Tamisha Donald, Coordinator | [tamisha.donald@lausd.net](mailto:tamisha.donald@lausd.net)  
Maxine Salcido, Specialist | [maxine.salcido@lausd.net](mailto:maxine.salcido@lausd.net)  
Rene Bell Harbour, Specialist | [rene.bell@lausd.net](mailto:rene.bell@lausd.net)

### West Region

Tamara Robinson, Coordinator |  
[tamara.robinson@lausd.net](mailto:tamara.robinson@lausd.net)  
Rene Bell Harbour, Specialist | [rene.bell@lausd.net](mailto:rene.bell@lausd.net)

## SOCIAL MEDIA

### Facebook

<https://www.facebook.com/LAUSDStudentSupportPrograms>

### Instagram

<https://www.instagram.com/lausdssp/>

### X

[https://x.com/LAUSD\\_SSP](https://x.com/LAUSD_SSP)



Los Angeles Unified School District  
Student Support & Attendance Services  
Student Support Programs



# SPECIALIZED STUDENT SERVICES

[studentsupportprograms.lausd.org](https://studentsupportprograms.lausd.org)

# SPECIALIZED STUDENT SERVICES (SSS)

We are a specialized program within LAUSD Student Support Programs



## PURPOSE

*The Specialized Student Services (SSS) Counselors provide local, integrated, and specialized support services for targeted student populations, including students in foster care, experiencing homelessness, and/or involved in the juvenile justice system.*



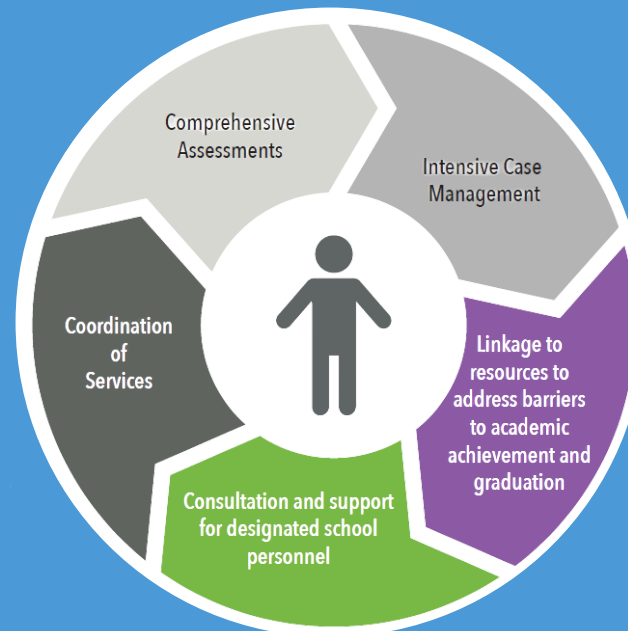
## DESCRIPTION

### Advocacy and Case Management Services

- Identify and address barriers to educational achievement.
- Advocate for educational rights including immediate school enrollment, ensuring school of origin rights, and timely transfer of school records.
- Link to resources that assist with identified needs, including transportation, food and housing.

### Objectives

- Increase attendance rates and school engagement.
- Increase academic achievement and graduation rates.
- Increase school stability.



## STUDENTS EXPERIENCING HOMELESSNESS

SSS Counselors provide support to students experiencing homelessness. LAUSD identifies students experiencing homelessness via the Student Housing Questionnaire (SHQ). SSS Counselors, under the McKinney-Vento Homeless Assistance Act, work to remove barriers to academic success for homeless students and their families district-wide. SSS Counselors provide basic resources for identified students experiencing homelessness such as backpacks, school supplies, hygiene kits, transportation assistance and emergency clothing.

## STUDENTS INVOLVED IN THE JUVENILE JUSTICE SYSTEM

LAUSD collaborates with the Los Angeles County Office of Education (LACOE) and the Los Angeles County Probation Department to ensure that protocols and procedures are in place to establish early identification, support appropriate placement upon re-entry into the District, as well as provide aftercare case management services for identified LAUSD students who come in contact with the Los Angeles County's Juvenile Justice System. With the support of placement counselors and court liaisons, SSS counselors facilitate re-enrollment and successful transition into LAUSD schools.

## STUDENTS IN THE FOSTER CARE SYSTEM

The SSS program is dedicated to enhance the educational outcomes of students involved in the foster care system (e.g., living with: parent, relative caregivers, foster parents, students with DCFS voluntary placement agreements, or dependent of the court of a tribal organizations). The SSS Counselors advocate for the educational rights of students in foster care, as well as provide consultation and training to District and school staff, community agencies, and caregivers on issues and legislation specific to students in foster care.